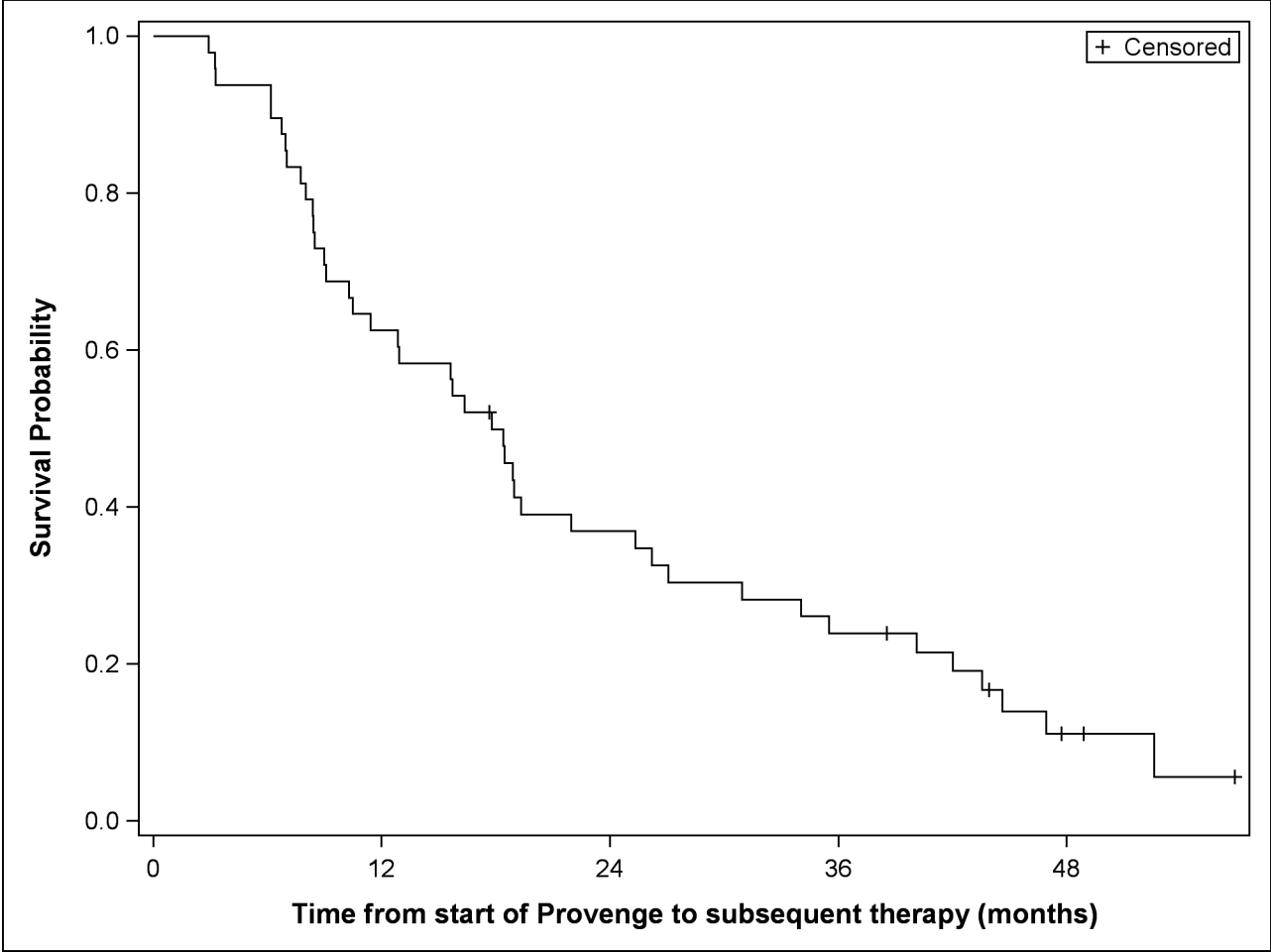


**Supplemental Figure 2: Time to subsequent therapy. Kaplan-Meier plot of overall survival calculated from the start of Sipuleucel-T to time of subsequent therapy or last follow-up. Median time to subsequent therapy was 17.8 months (95% CI: 10.5, 25.3).**



Median time to subsequent therapy: 17.8 months (95% CI: 10.5, 25.3)