

Figure S1. Schematic diagram of the pmirGLO vector.

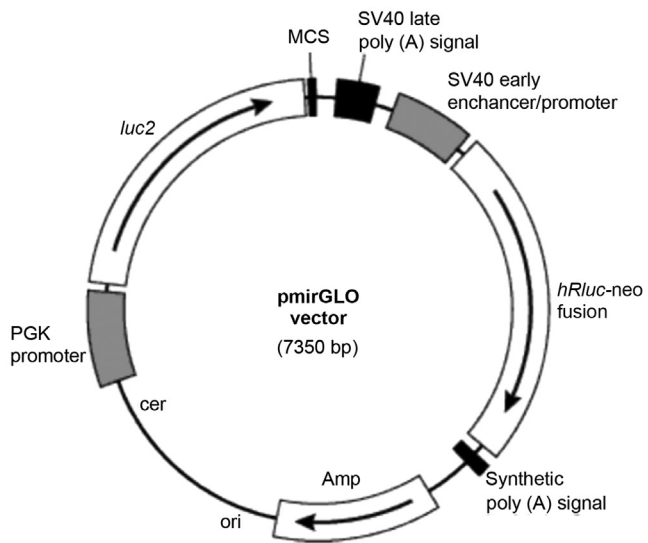


Figure S2. Annexin V-FITC/PI staining for determination of cell apoptosis. The HESCs were treated as indicated for 24 h, and the cells were then stained with Annexin V-FITC/PI and examined by flow cytometry. HESCs, human endometrial stromal cells; PI, propidium iodide.

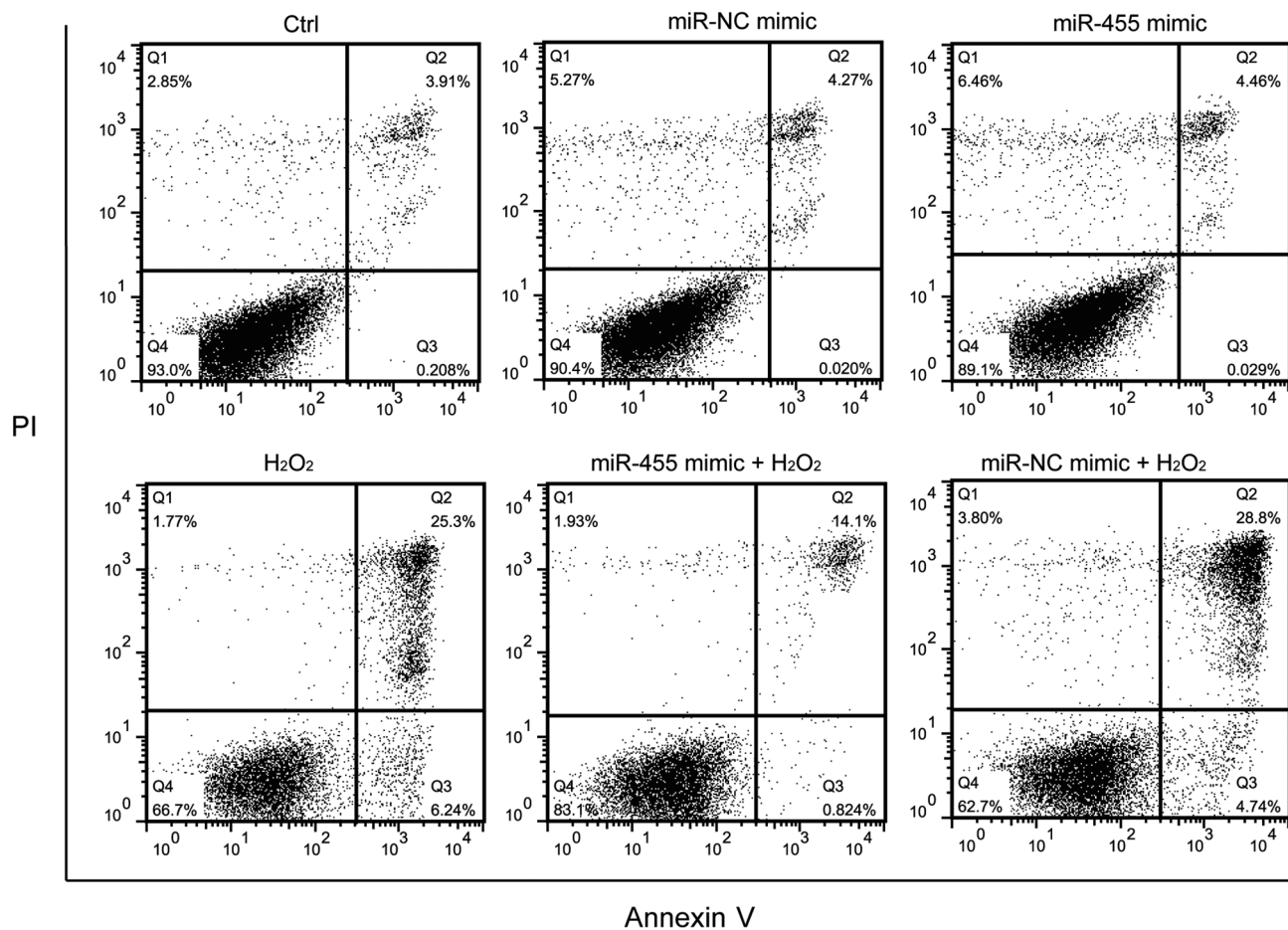


Figure S3. Annexin V-FITC/PI staining for determination of cell apoptosis. The HESCs were treated as indicated for 24 h, then cells were stained with Annexin V-FITC/PI and examined by flow cytometry. HESCs, human endometrial stromal cells; PI, propidium iodide.

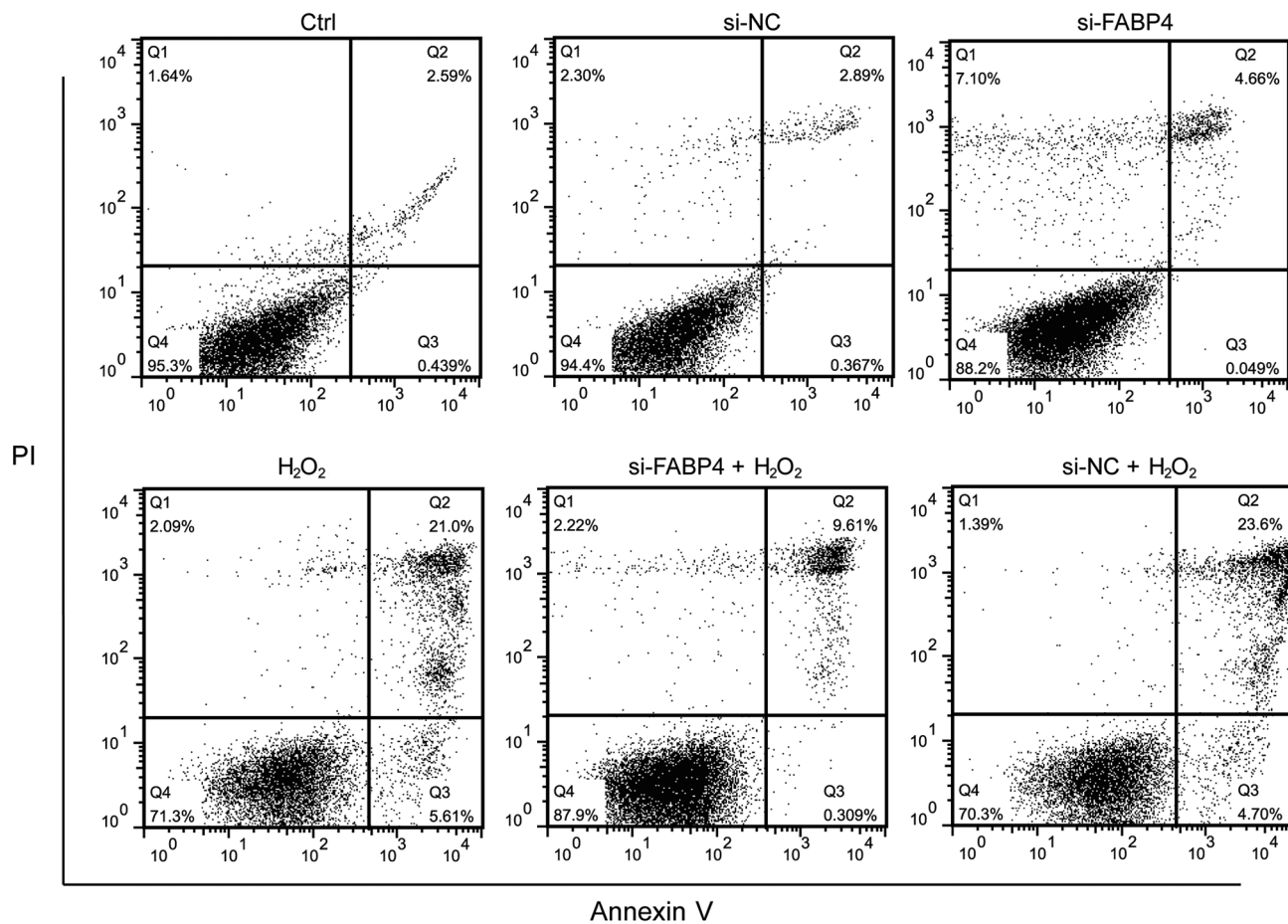


Figure S4. Annexin V-FITC/PI staining for determination of cell apoptosis. PI, propidium iodide.

