

## **Supporting information**

### **Michael-type addition of gelatin on electrospun nanofibrils for self-assembly of cell sheets composed of human dermal fibroblasts**

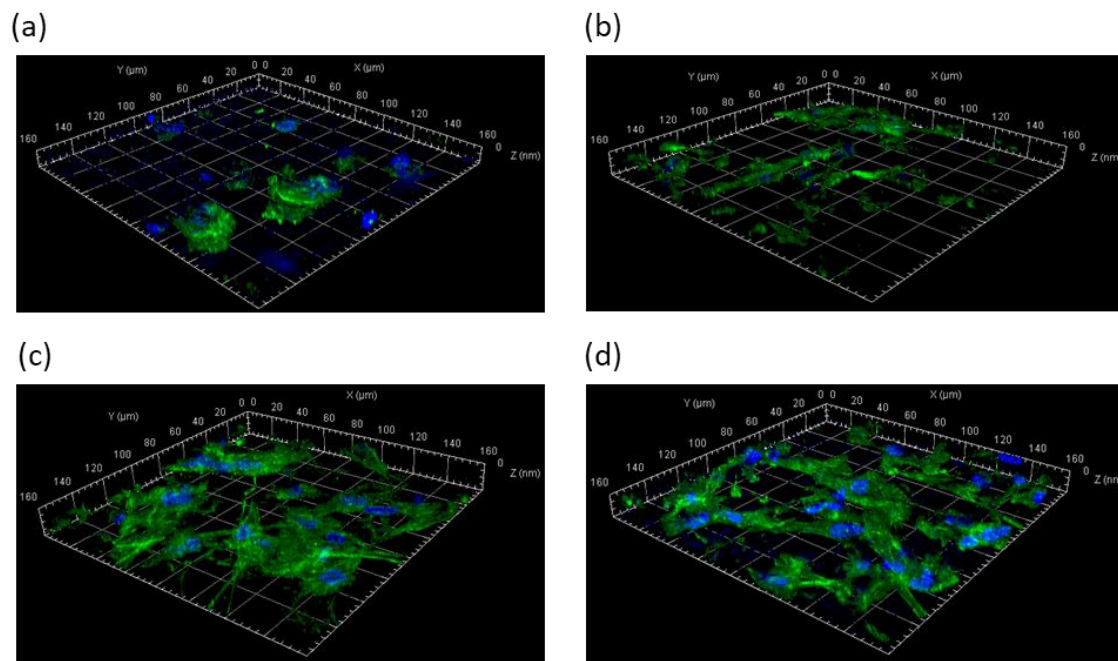
Ju Won Lee<sup>a</sup>, Hyuk Sang Yoo<sup>a,b,\*</sup>

<sup>a</sup>Department of Biomedical Materials Engineering, Kangwon National University, Chuncheon, 24341, Republic of Korea

<sup>b</sup>Institute of Bioscience and Biotechnology, Kangwon National University, Republic of Korea

\*corresponding author: e-mail [hsyoo@kangwon.ac.kr](mailto:hsyoo@kangwon.ac.kr) website: <http://nano-bio.kangwon.ac.kr>

## Supporting Information



**Figure S1.** . 3D reconstruction of confocal microscope image stacks of HDF cultivated with various scaffolds for 3 days. Cytoskeleton of the cells were stained with Alexa Fluor 488 Phalloidin (green) and nucleus of the cells were stained with DAPI (blue) for the (a) hPCL NF (b) ahPCL NF (c) GelMA@hPCL NF and (d) GelMA@ahPCL NF, respectively.