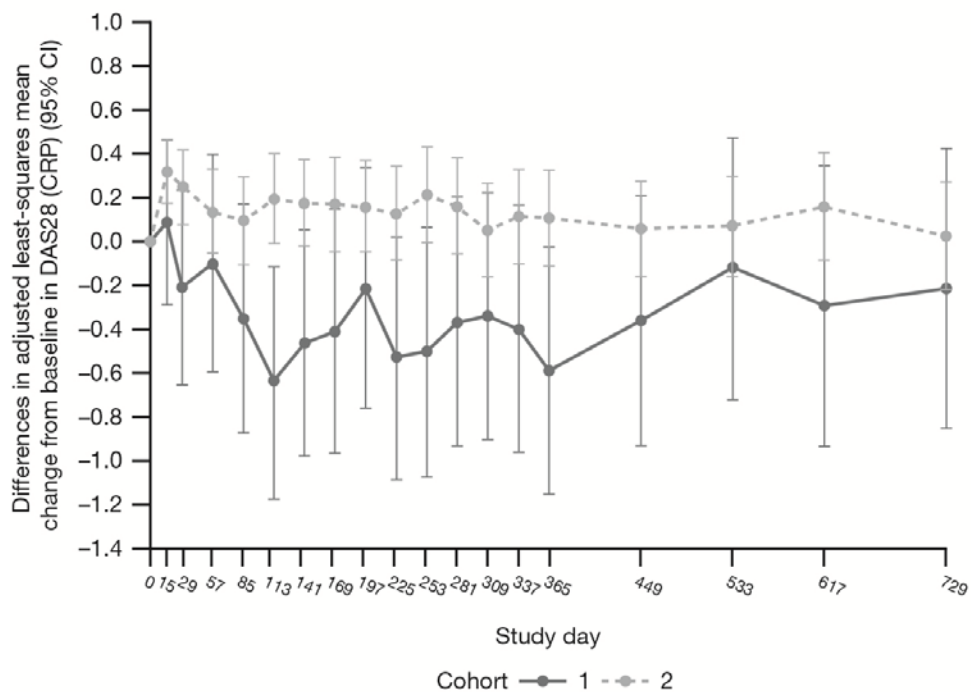


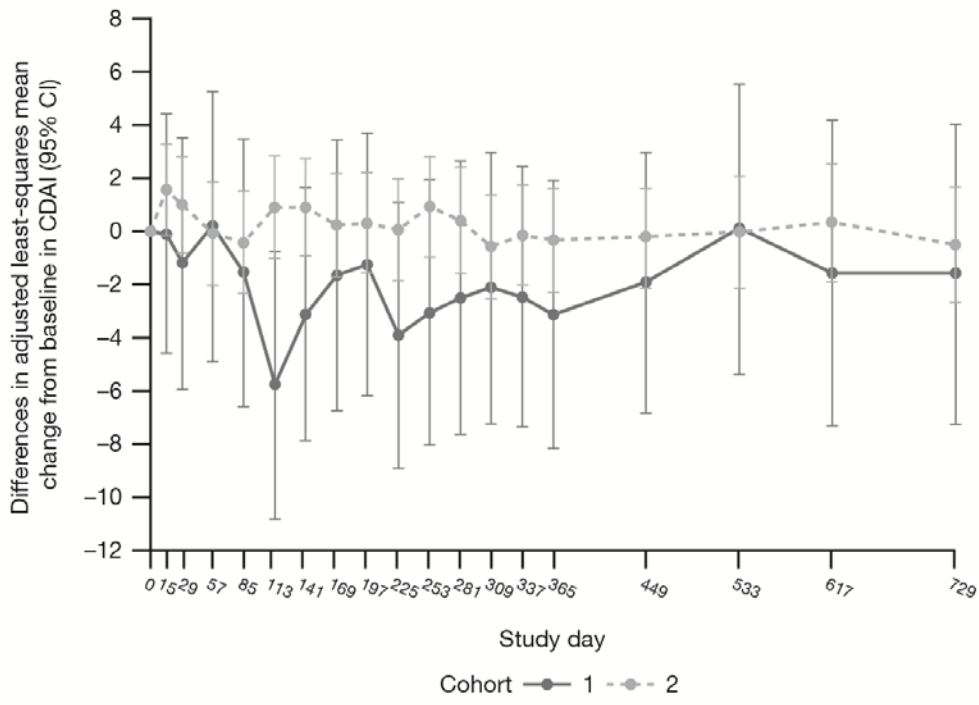
Supplementary Appendix

Supplemental Fig S1. Differences between cohorts in mean change from baseline over time for (A) DAS28 (CRP), (B) CDAI, (C) fatigue, (D) HAQ-DI, (E) pain, and (F) SDAI. All randomized and treated patients were included in the analysis. Adjustment based on repeated measures mixed model, which includes baseline values, time, treatment group, DAS28 (CRP) stratification, cohort, treatment by time by cohort interaction, treatment by time interaction, and treatment by cohort interaction. Differences are calculated using the abatacept estimates minus the adalimumab estimates. CDAI, Clinical Disease Activity Index; DAS28 (CRP), Disease Activity Score in 28 joints (assessed with C-reactive protein); HAQ-DI, Health Assessment Questionnaire-Disability Index; SDAI, Simplified Disease Activity Index.

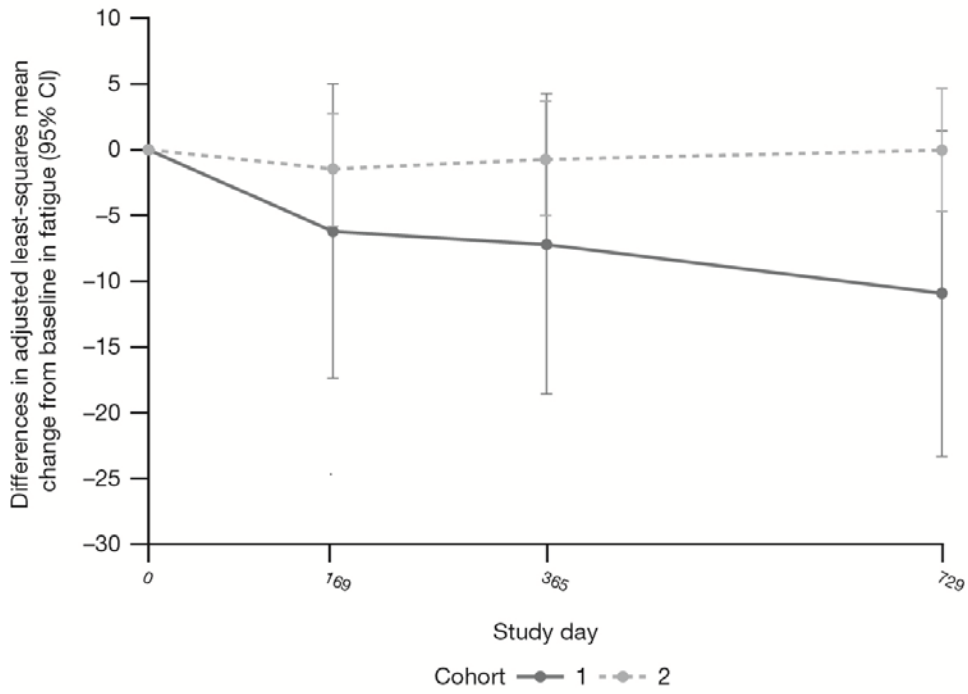
A



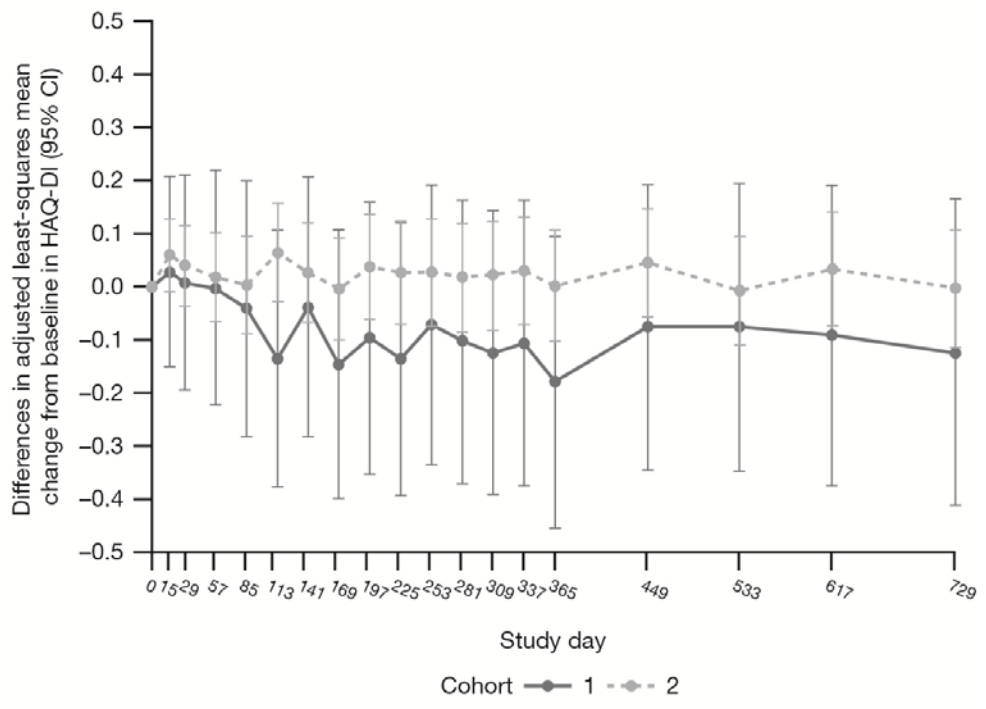
B



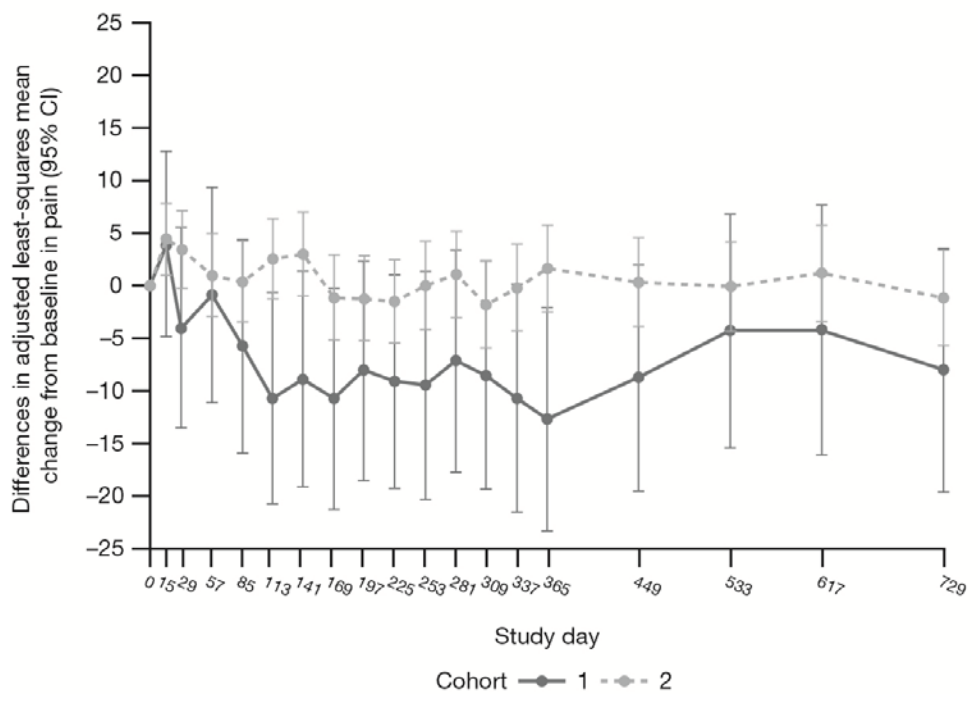
C



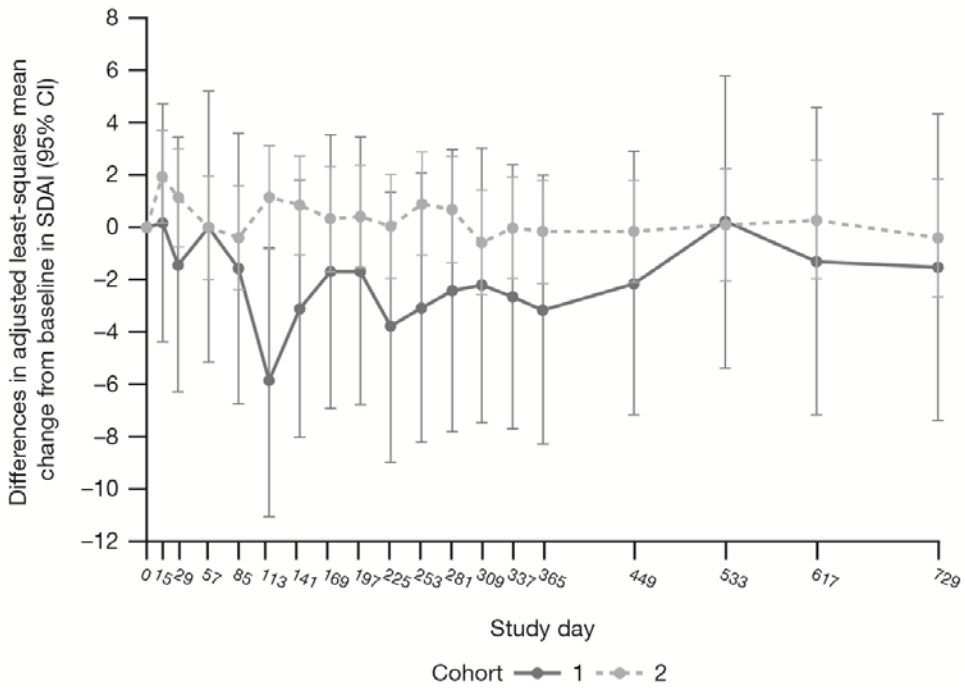
D



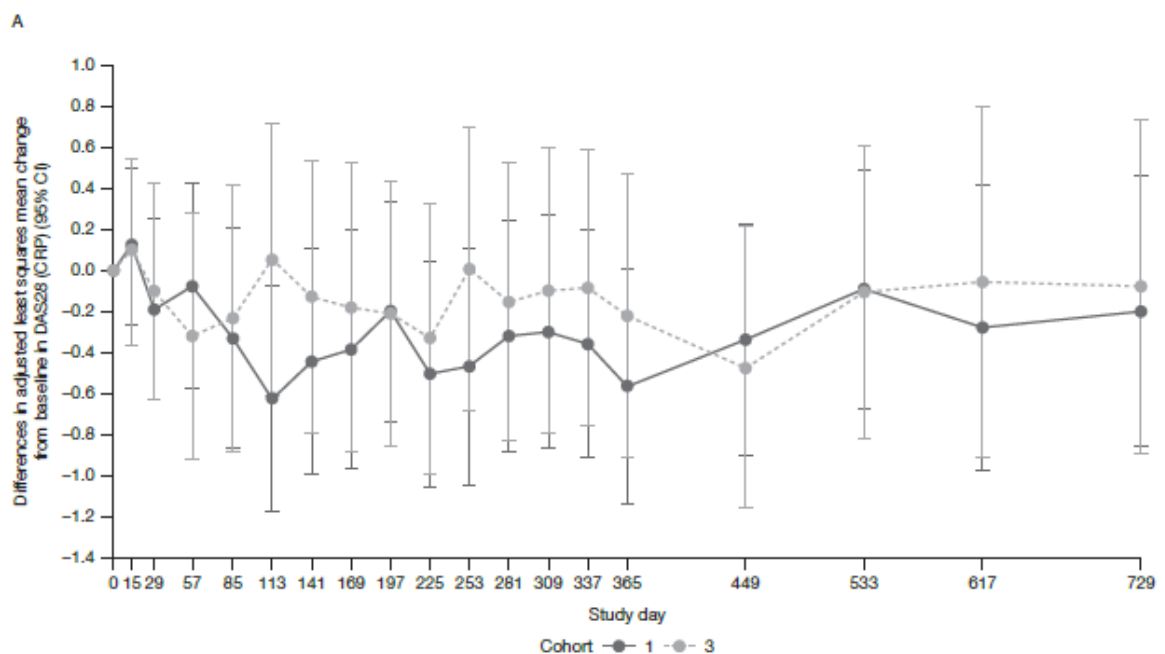
E



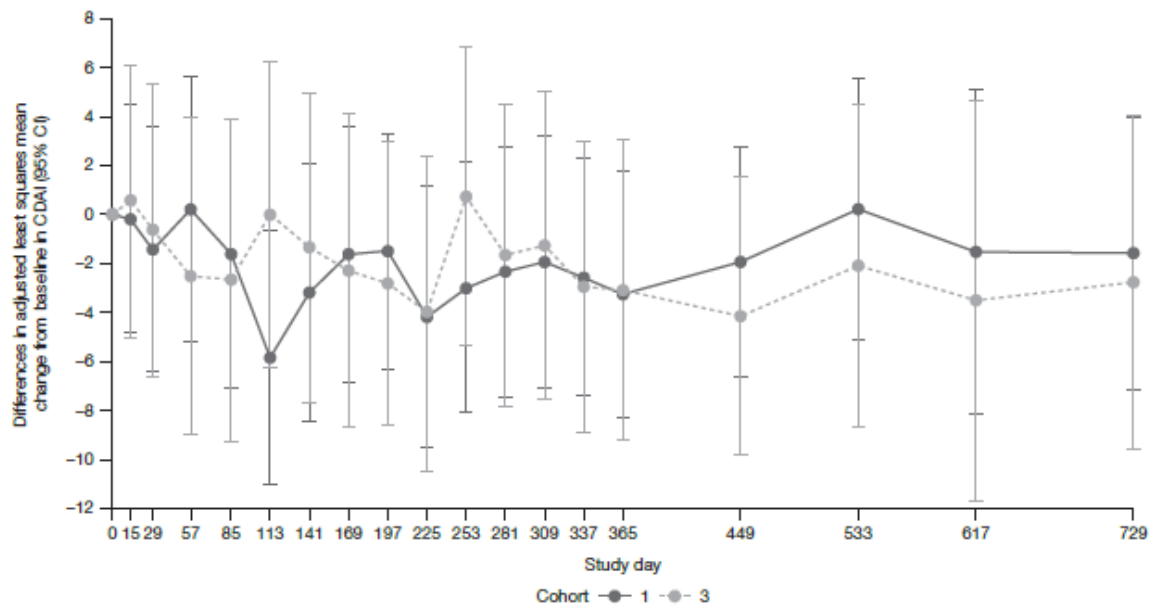
F



Supplemental Fig S2. Differences between cohorts in mean change from baseline over time for (A) DAS28 (CRP), (B) CDAI. Cohort 1 included patients with early (≤ 6 months' disease duration) seropositive erosive RA; Cohort 3 included patients with early (≤ 6 months' disease duration) RA and the absence of any one of the other factors in Cohort 1. All randomized and treated patients were included in the analysis. Adjustment based on repeated measures mixed model, which includes baseline values, time, treatment group, DAS28 (CRP) stratification, cohort, treatment by time by cohort interaction, treatment by time interaction, treatment by cohort interaction. Differences are calculated using the abatacept estimates minus the adalimumab estimates. CDAI, Clinical Disease Activity Index; DAS28 (CRP), Disease Activity Score in 28 joints (assessed with C-reactive protein); RA, rheumatoid arthritis.



B



Supplemental Table 1. Adjusted mean change from baseline in pain and fatigue at Days 169, 365, and 729.

	Cohort 2: patients with seropositive, erosive early RA (treatment duration ≤ 6 months)	
	Abatacept SC (n = 38)	Adalimumab SC (n = 45)
Pain		
Day 169	-34.3 (-43.8 to -24.8)	-25.9 (-37.7 to -14.2)
Day 365	-37.8 (-47.4 to -28.2)	-32.0 (-43.8 to -20.1)
Day 729	-33.7 (-43.7 to -23.8)	-33.2 (-45.5 to -20.9)
Fatigue		
Day 169	-31.4 (-41.0 to -21.3)	-18.8 (-29.9 to -7.6)
Day 365	-29.0 (-38.6 to -19.3)	-25.1 (-36.4 to -13.8)
Day 729	-25.3 (-35.7 to -14.8)	-23.6 (-35.9 to -11.4)

Data are mean change from baseline to time point (95% CI). All randomized and treated patients in Cohort 2 with disease duration ≤ 6 months were included in the analysis. Pain and fatigue were assessed using a visual analog scale (100 mm, where 0 = none and 100 = worst possible).

CI, confidence interval; RA, rheumatoid arthritis; SC, subcutaneous.