

Supplemental Figures:

Figure S1: Bioinformatics pipeline for lncRNA identification, content and response to abiotic stress.

Figure S2: Chromosome distribution of long non-coding RNAs. Density were plotted on each chromosome.

Figure S3: Differential expressed genes under different abiotic stresses. A-D, Venn diagram of DEGs under stress condition across different development stage V3-V6. E-G, Venn diagram of DEGs under different stress conditions at one stage.

Figure S4: the relationships between module and trait.

Figure S5-9: the specific expression profiles of eigen-lncRNAs under different abiotic stresses across developmental stages.

Figure S1: Bioinformatics pipeline for lncRNA identification, content and response to abiotic stress.

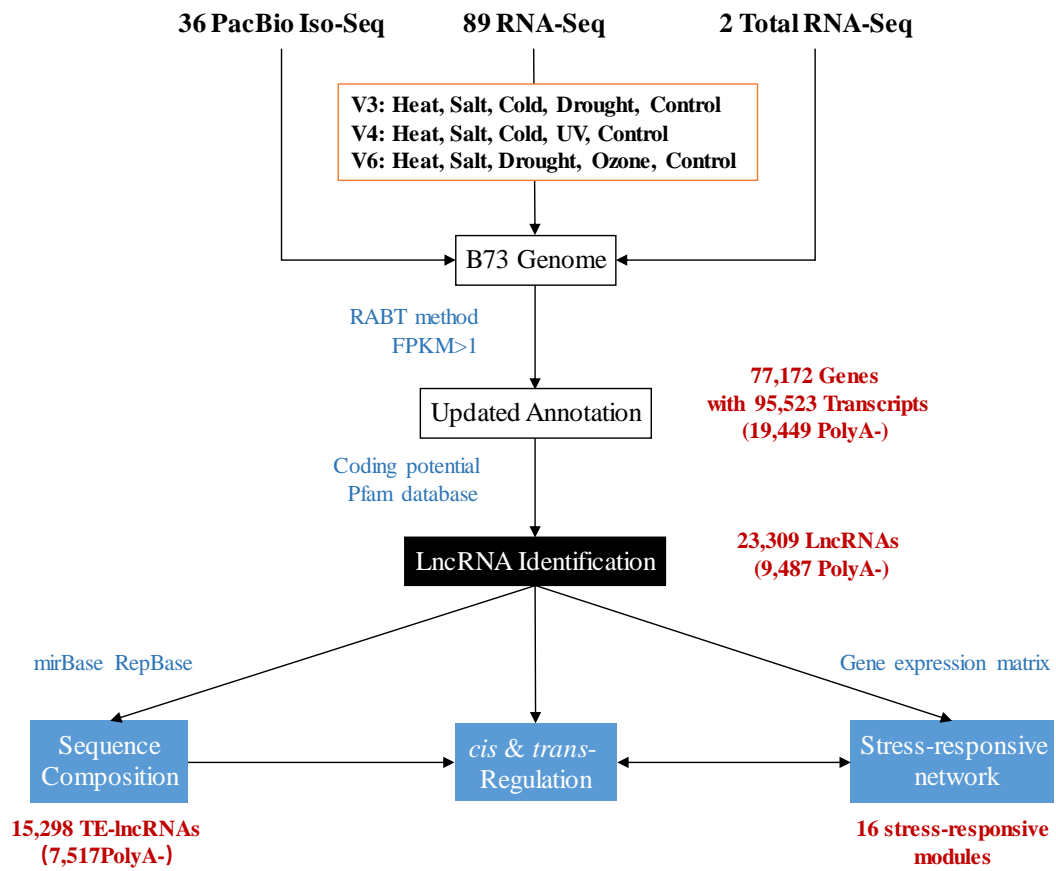


Figure S2: Chromosome distribution of long non-coding RNAs. Density were plotted on each chromosome.

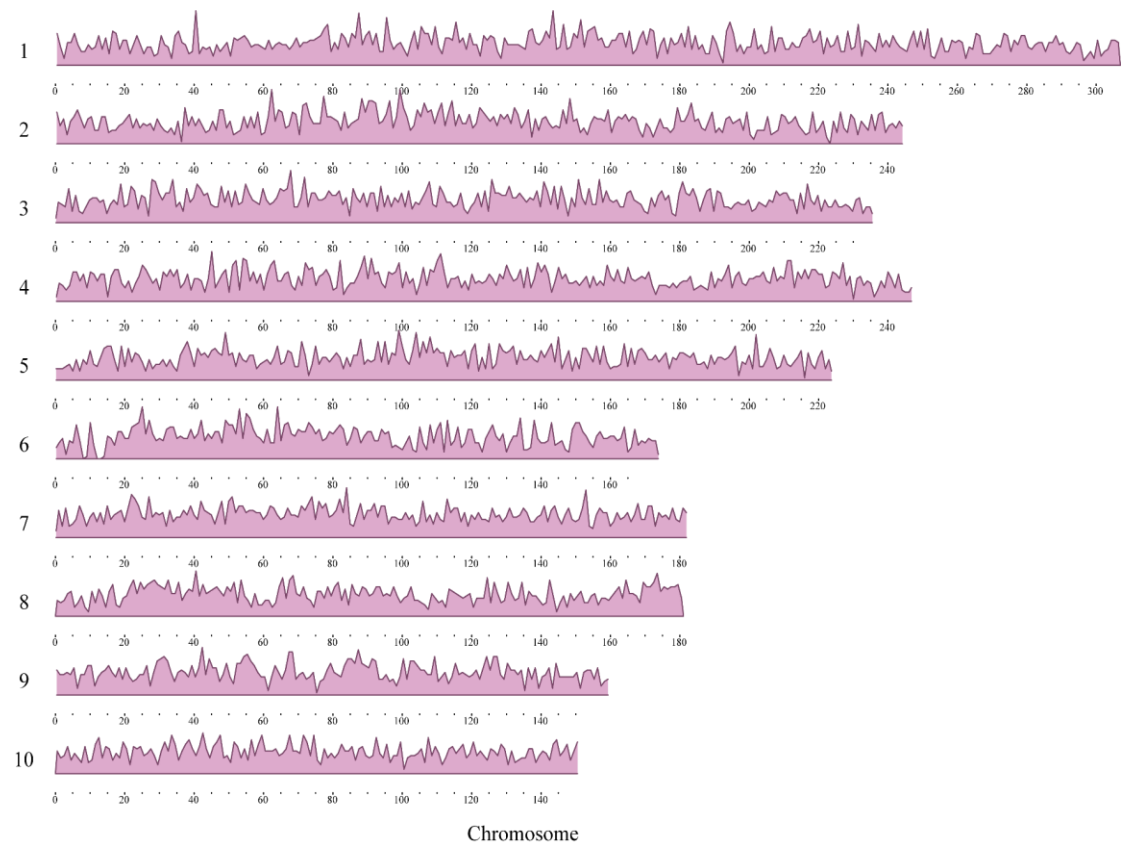


Figure S3: DE-lncRNAs under abiotic stress

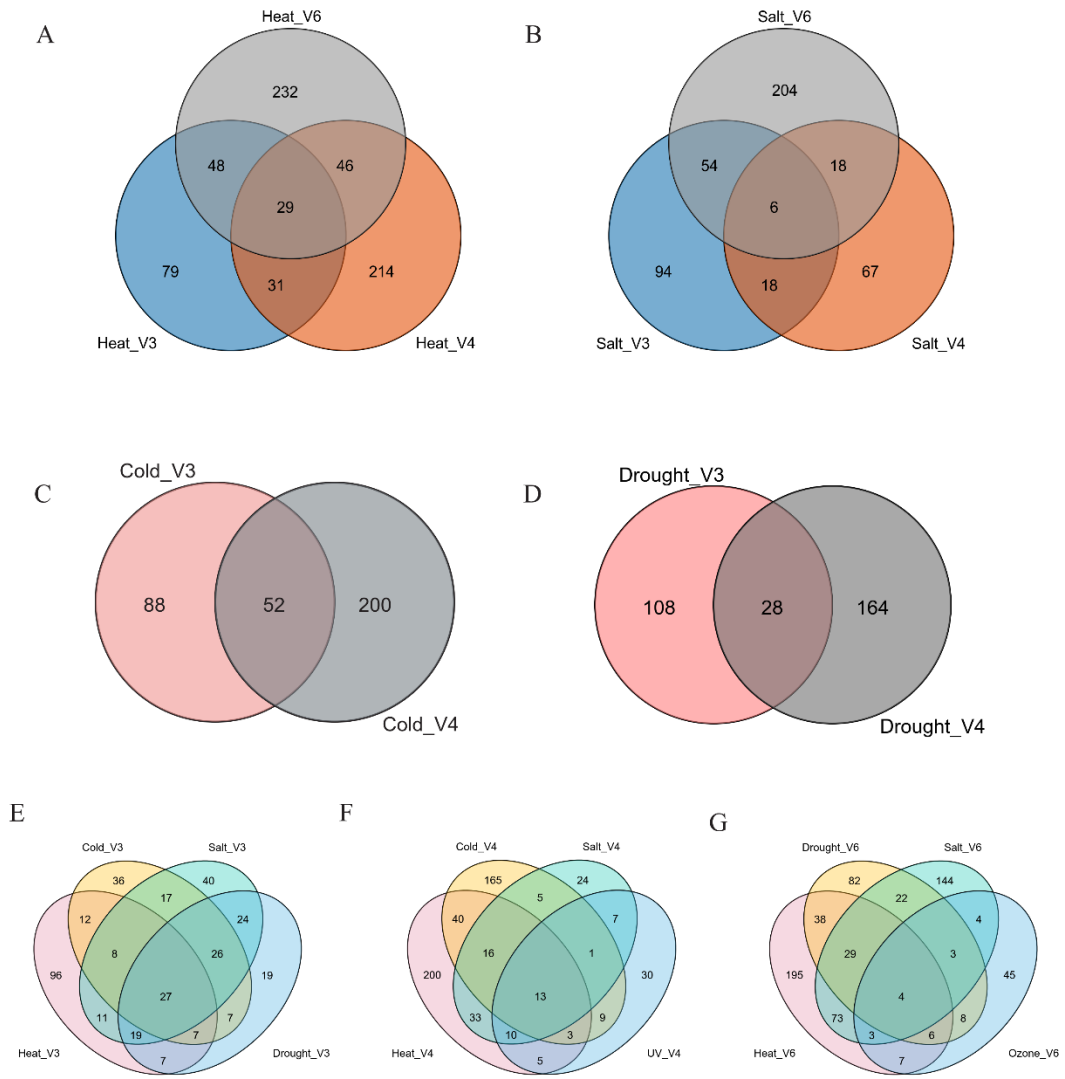


Figure S5: The expression profile of hub genes in cold-associated modules

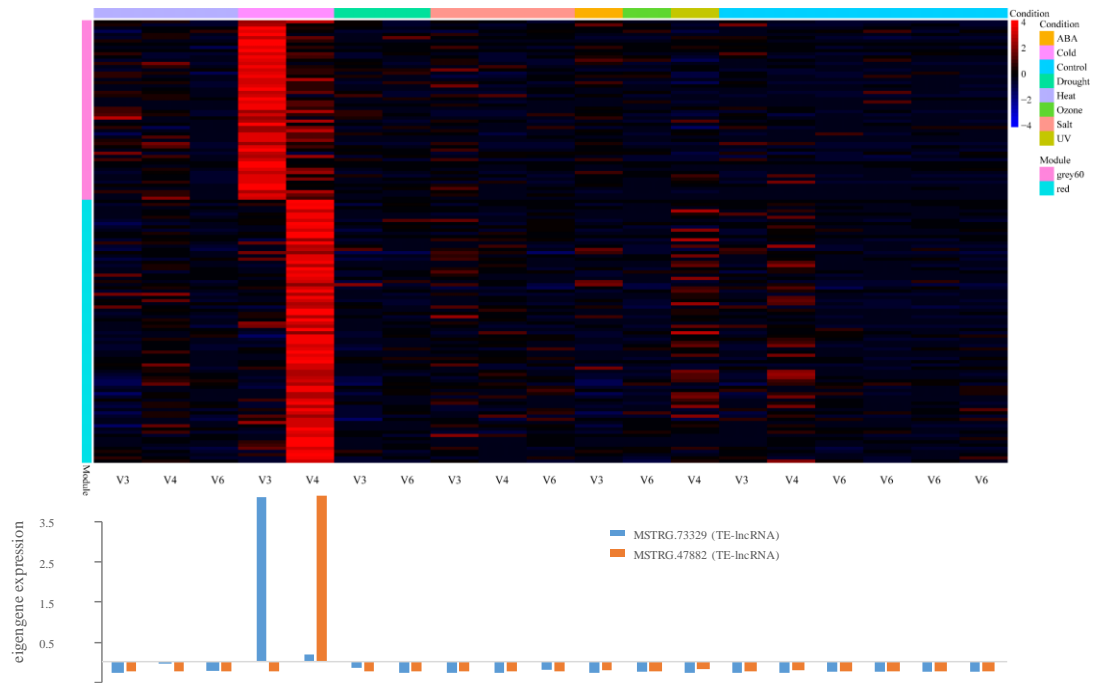


Figure S6: The expression profile of hub genes in drought-associated modules

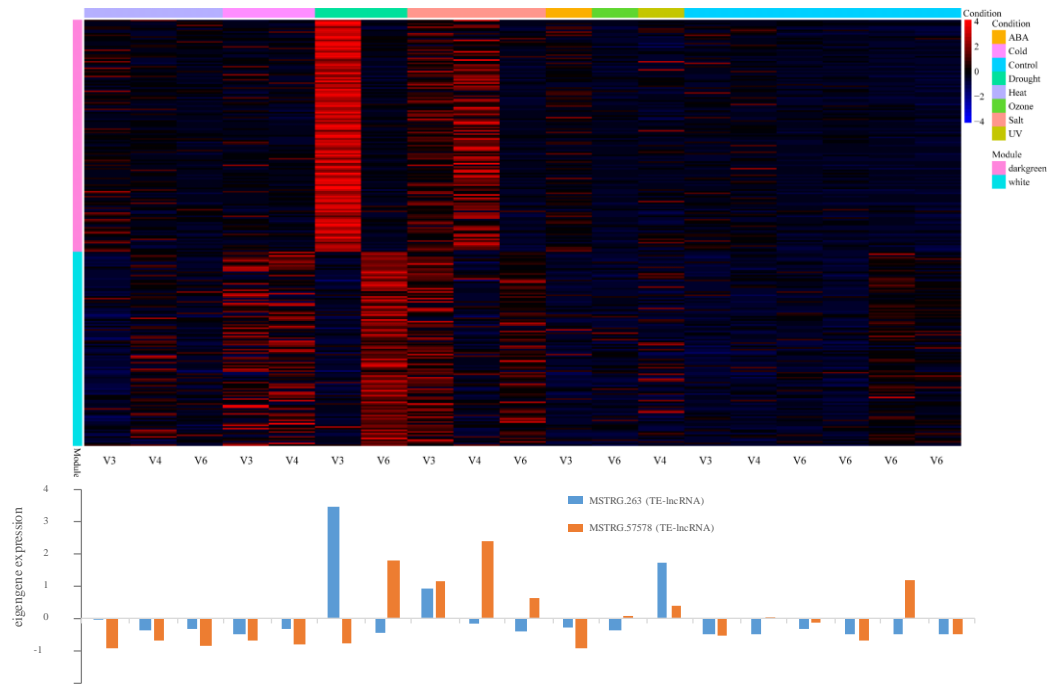


Figure S7: The expression profile of hub genes in salt-associated modules

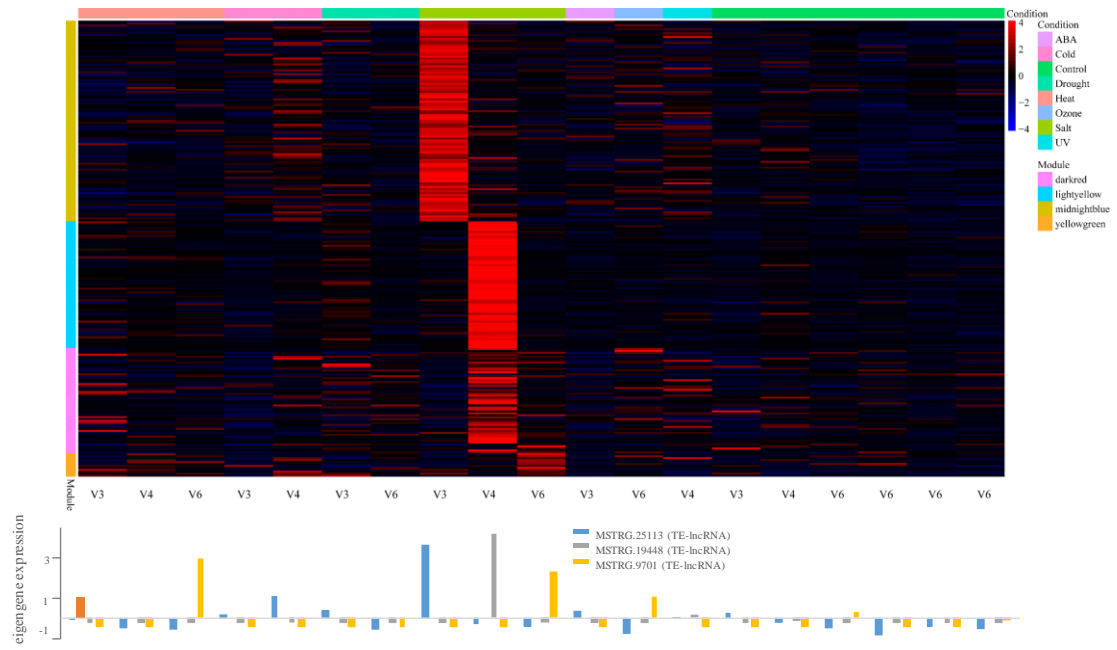


Figure S8: The expression profile of hub genes in UV-associated modules

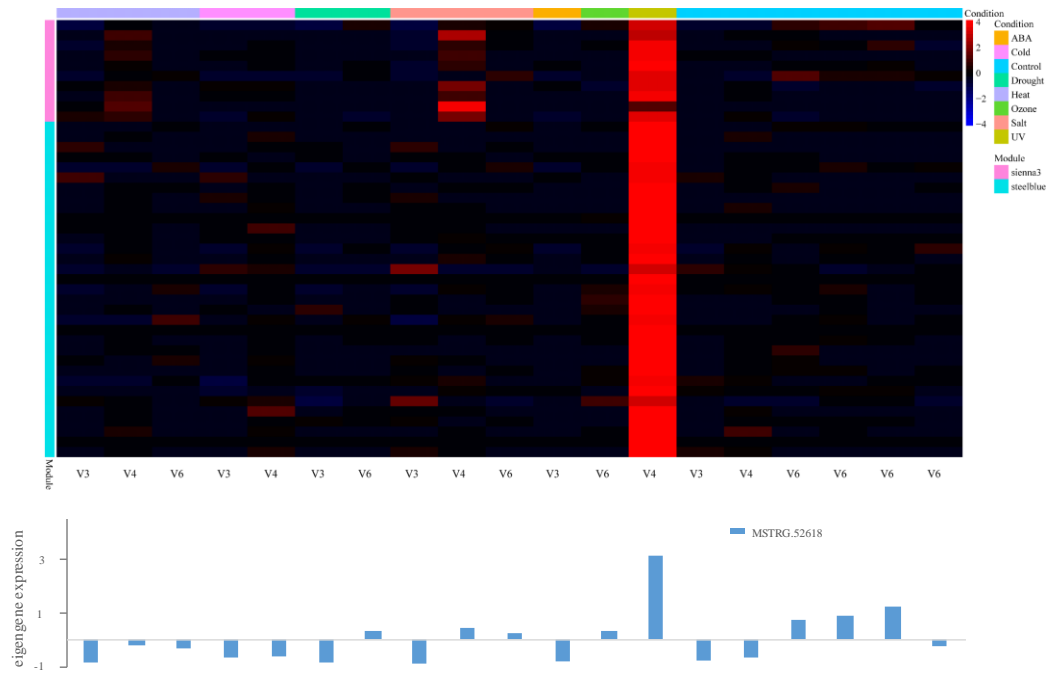


Figure S9: The expression profile of hub genes in ozone-associated modules

