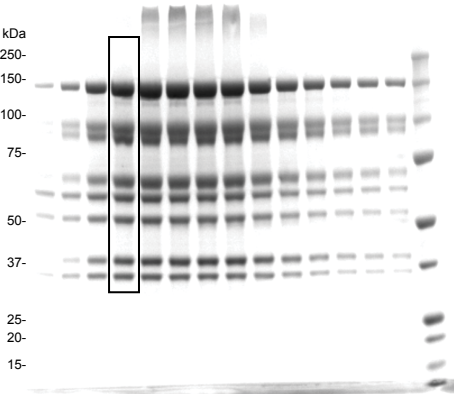
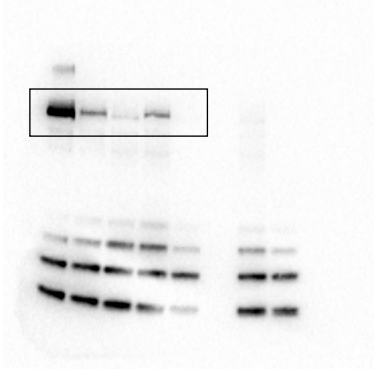


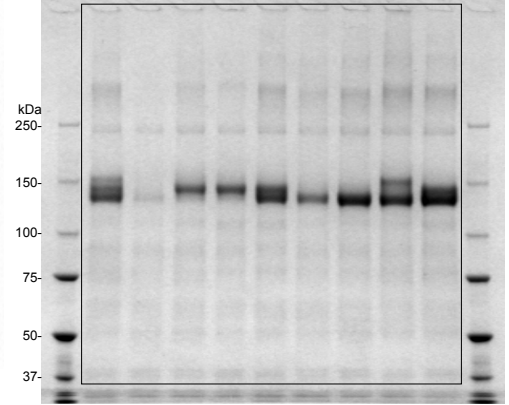
Fig. 1a



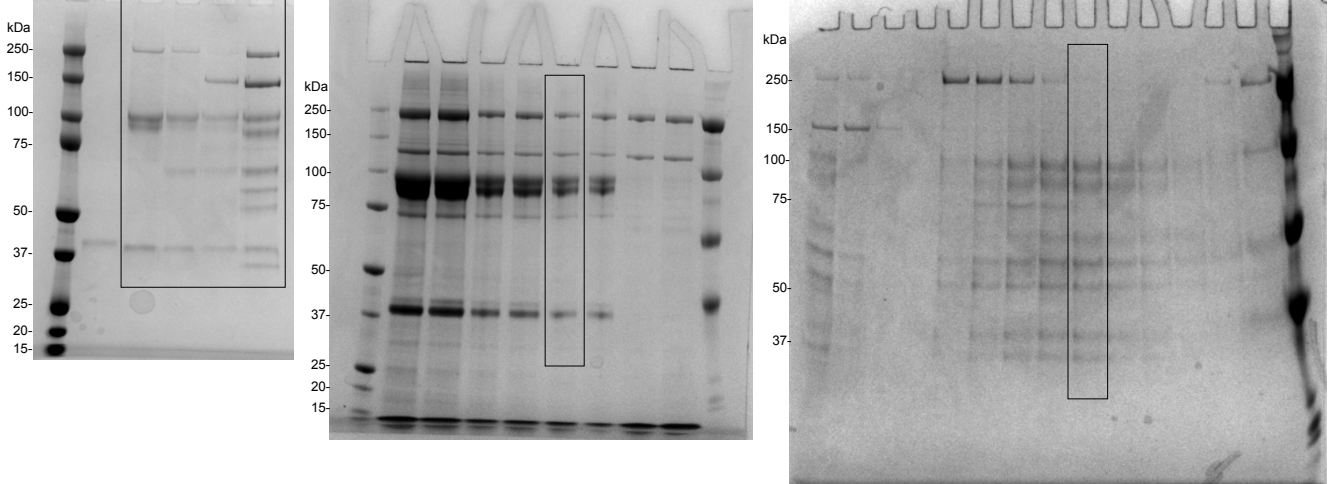
Extended Data Fig 1a



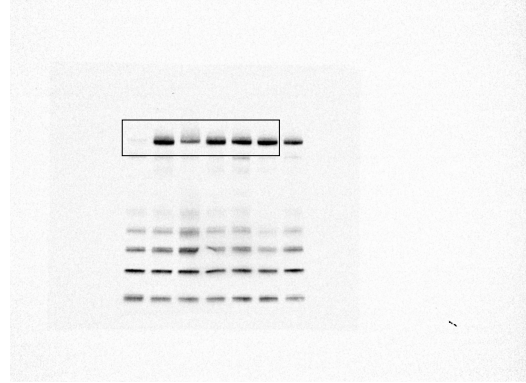
Extended Data Fig 1b



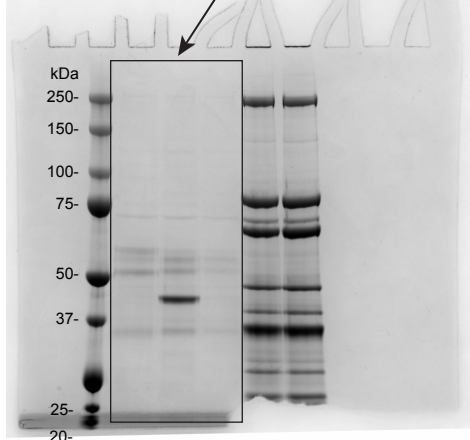
Extended Data Fig 3b



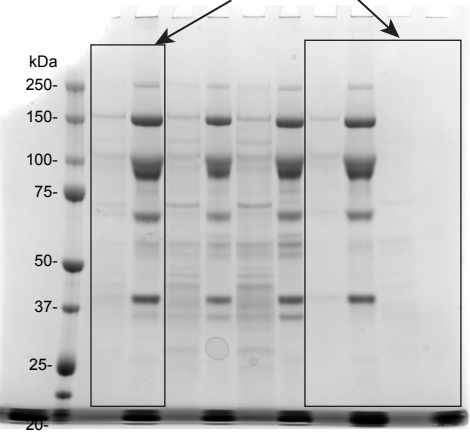
Extended Data Fig 9f



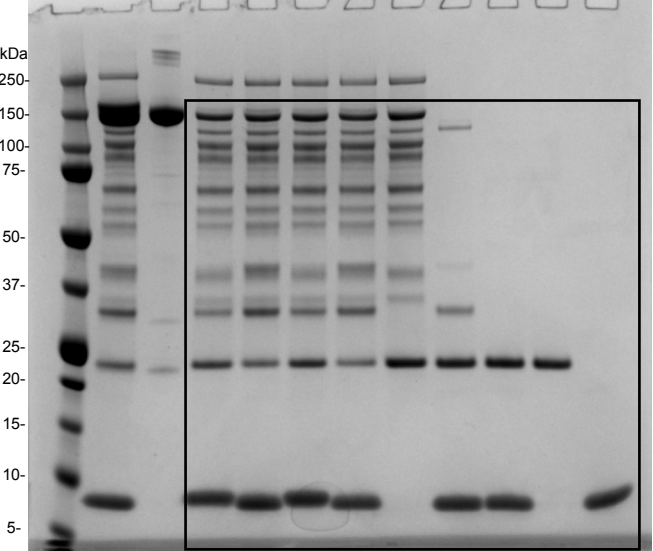
Extended Data Fig 8f (left panel)



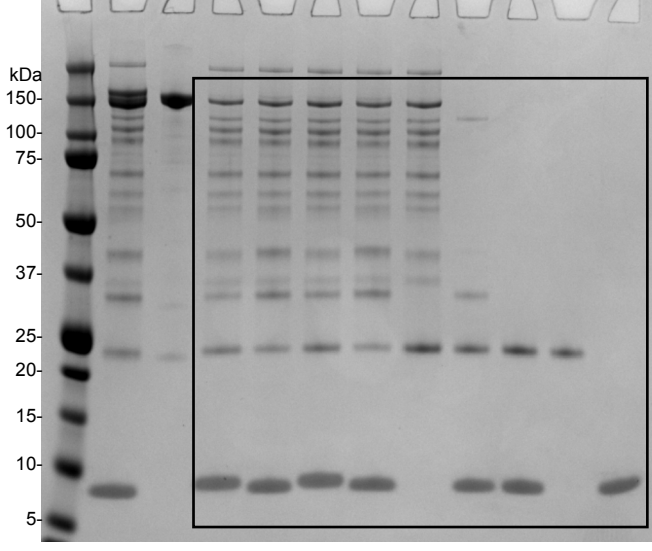
Extended Data Fig 8f (right panel and middle panel)



Extended Data Fig 9c

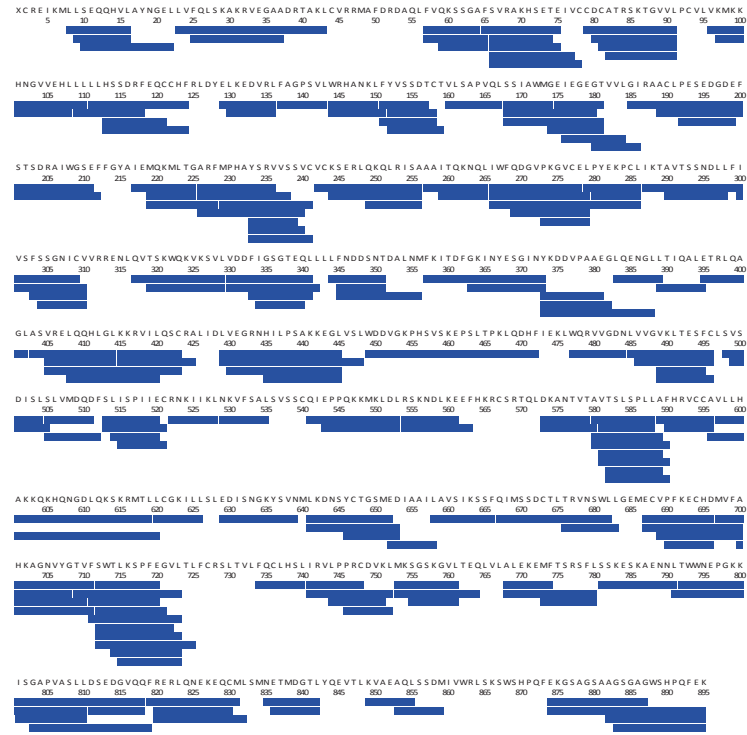


Extended Data Fig 9d



Supplementary Figure 1 - Uncropped gel and Western blot scans with size marker indications. Boxes indicate the area shown in the main/Extended Data Figure.

a **BL100 vs. B100** Total: 194 Peptides, 88.8% Coverage, 2.55 Redundancy



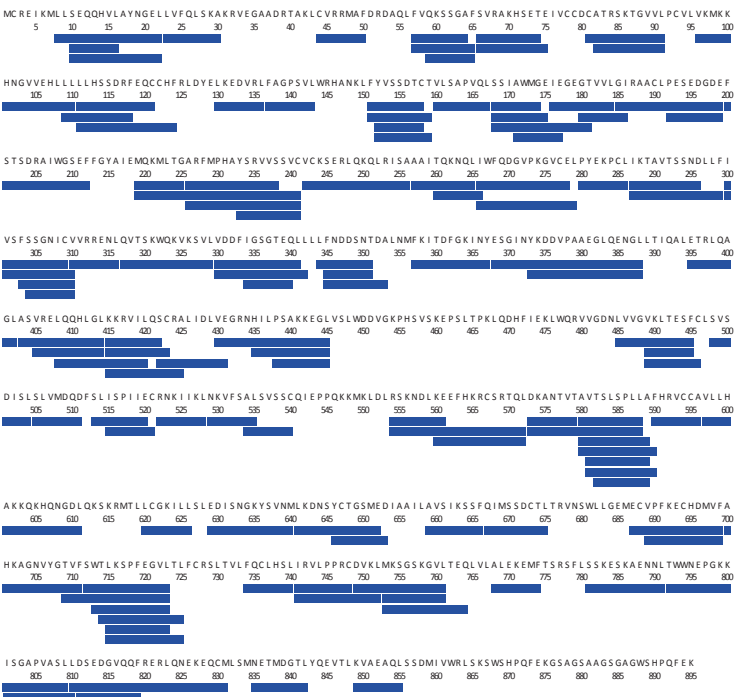
b **GBL100 vs. BL100** Total: 98 Peptides, 69.9% Coverage, 1.68 Redundancy



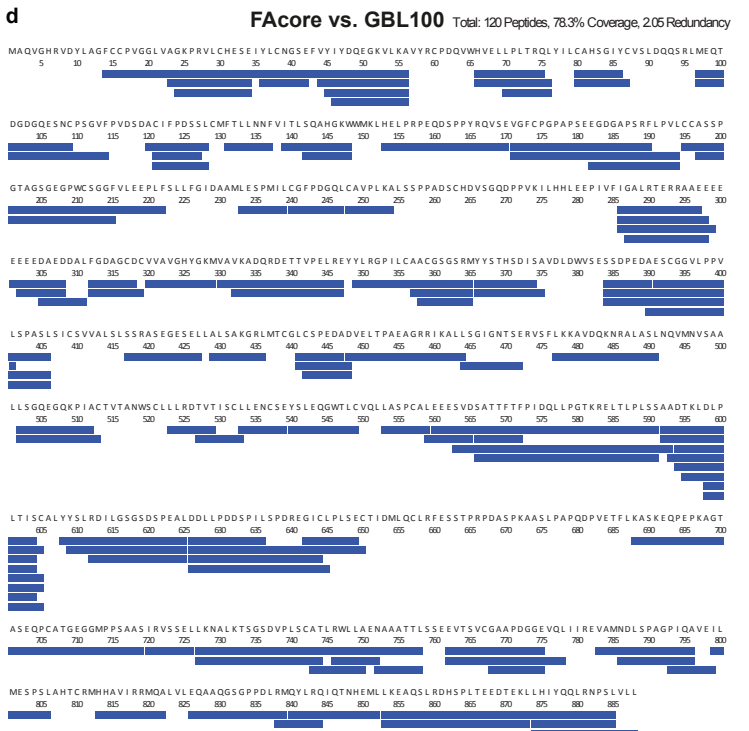
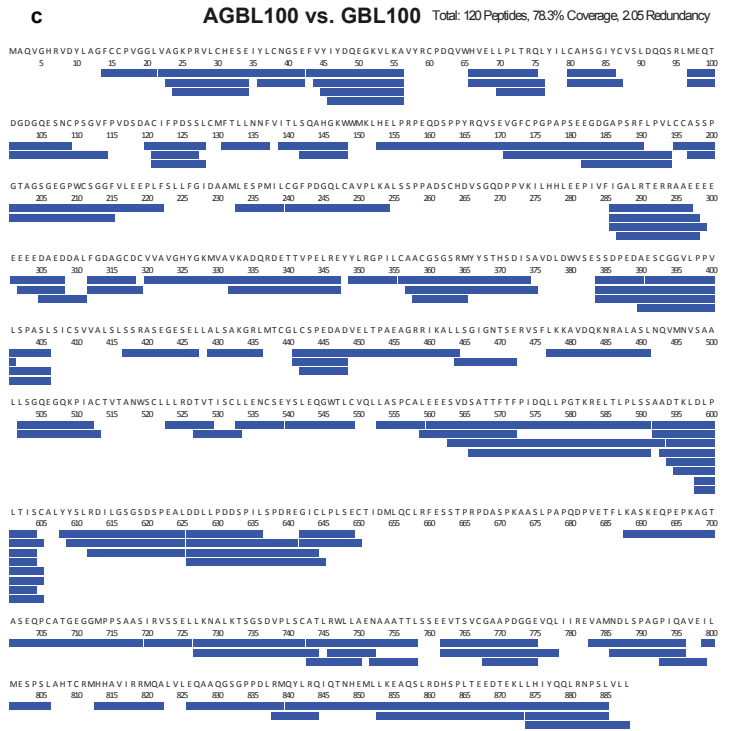
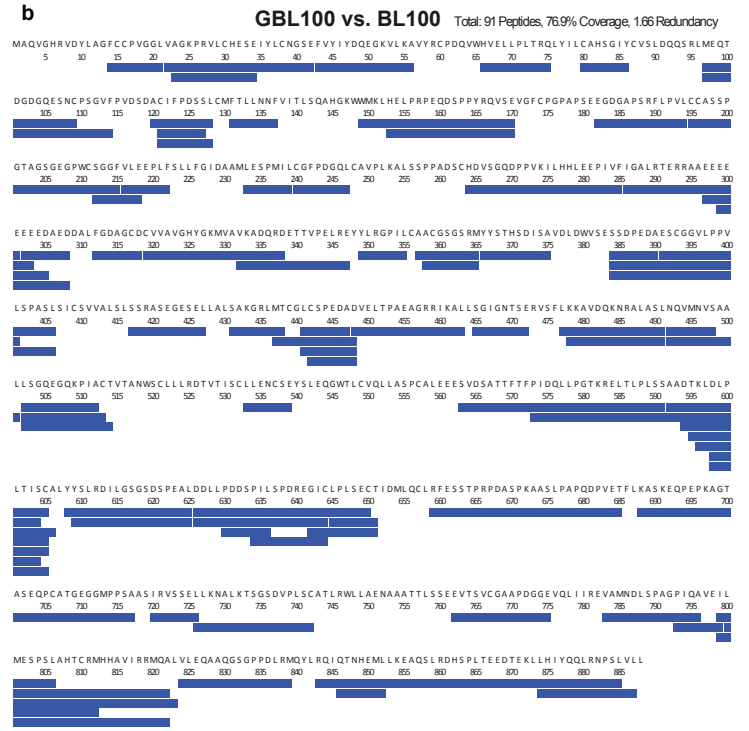
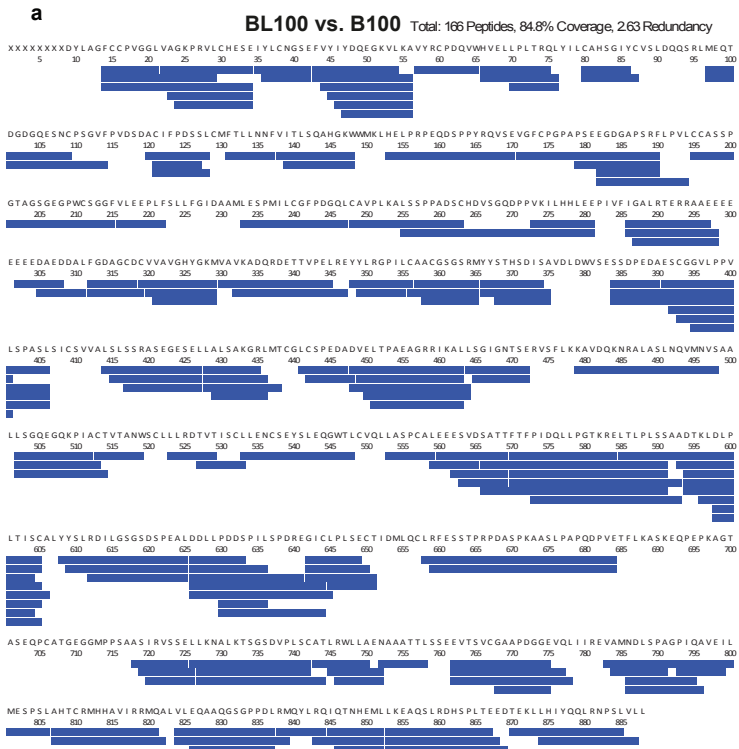
c **AGBL100 vs. GBL100** Total: 125 Peptides, 76.6% Coverage, 1.85 Redundancy



d **FAcore vs. GBL100** Total: 125 Peptides, 76.6% Coverage, 1.85 Redundancy



Supplementary Data 1 - Plots of FANCB sequence coverage for hydrogen deuterium exchange mass spectrometry.
Individual peptides are indicated by blue bars on the primary sequence of FANCB.



Supplementary Data 2 - Plots of FAAP100 sequence coverage for hydrogen deuterium exchange mass spectrometry.
 Individual peptides are indicated by blue bars on the primary sequence of FAAP100.