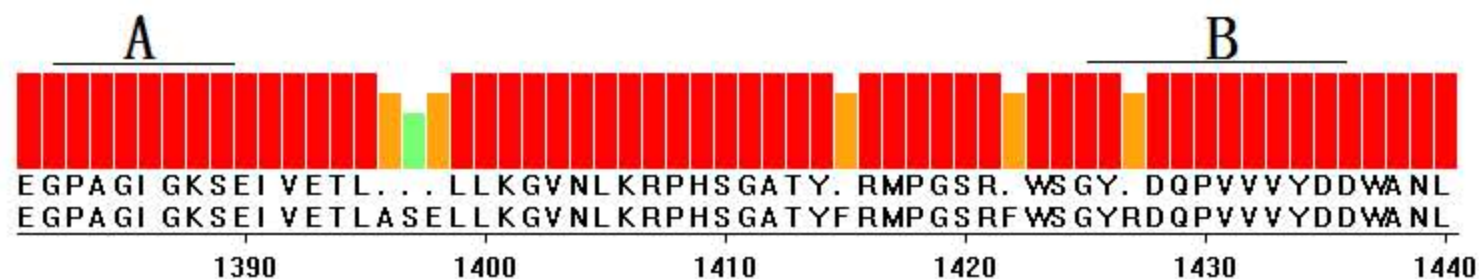


+ Consensus #1

Consensus #1

Majority



Accession	Sequence	Position
AmCSBV-SDLY.pro	EGPAGI GKSEI VETLASELLKGVNLKRPHSGATYFRMPGSRFWSGYRDQPVVVYDDWA NL	1422
AcSBV-Kor-HQ322114.1.pro	EGPAGI GKSEI VETLASELLKGVNLKRPHSGATYFRMPGSRFWSGYRDQPVVVYDDWA NL	1422
AcSBV-Kor4-KP296803.1.pro	EGPAGI GKSEI VETLASELLKGVNLKRPHSGATYFRMPGSRFWSGYRDQPVVVYDDWA NL	1422
AcSBV-Viet1-KM884990.1.pro	EGPAGI GKSEI VETLASELLKGVNLKRPHSGATYFRMPGSRFWSGYRDQPVVVYDDWA NL	1422
AcSBV-Viet2- KM884991.1.pro	EGPAGI GKSEI VETLASELLKGVNLKRPHSGATYFRMPGSRFWSGYRDQPVVVYDDWA NL	1422
AcSBV-Viet3-KM884992.1.pro	EGPAGI GKSEI VETLASELLKGVNLKRPHSGATYFRMPGSRFWSGYGDQPVVVYDDWA NL	1422
AcSBV-Viet5-KM884994.1.pro	EGPAGI GKSEI VETLASELLKGVNLKRPHSGATYFRMPGSRFWSGYRDQPVVVYDDWA NL	1422
AcSBV-VietHYnor-KJ959614.1.pro	EGPAGI GKSEI VETLASELLKGVNLKRPHSGATYFRMPGSRFWSGYRDQPVVVYDDWA NL	1422
AmSBV-Viet4-KM884993.1.pro	EGPAGI GKSEI VETLASELLKGVNLKRPHSGATYFRMPGSRFWSGYRDQPVVVYDDWA NL	1422
AmSBV-Kor19-JQ390592.1.pro	EGPAGI GKSEI VETLASELLKGVNLKRPHSGATYFRMPGSRFWSGYRDQPVVVYDDWA NL	1422
CSBV-JL2014-KU574661.1.pro	EGPAGI GKSEI VETLASELLKGVNLKRPHSGATYFRMPGSRFWSGYRDQPVVVYDDWA NL	1422
AcSBV-VietNA-KX668140.1.pro	EGPAGI GKSEI VETLATELLKGVNLKRPHSGATYFRMPGSRFWSGYRDQPVVVYDDWA NL	1422
CSBV-FZ-KM495267.1.pro	EGPAGI GKSEI VETLASELLKGVNLKRPHSGATYFRMPGSRFWSGYRDQPVVVYDDWA NL	1426
CSBV-LN2009-HM237361.1.pro	EGPAGI GKSEI VETLATELLKGVNLKRPHSGATYFRMPGSRFWSGYRDQPVVVYDDWA NL	1426
CSBV-GD-AF469603.1.pro	EGPAGI GKSEI VETLASELLKGVNLKRPHSGATYFRMPGSRFWSGYRDQPVVVYDDWA NL	1439
CSBV-BJ2012-KF960044.1.pro	EGPAGI GKSEI VETLATA LLKGVNLKRPHSGATYFRMPGSRFWSGYRDQPVVVYDDWA NL	1439
CSBV-SXnor1-KJ000692.1.pro	EGPAGI GKSEI VETLATA LLKGVNLKRPHSGATYFRMPGSRFWSGYRDQPVVVYDDWA NL	1439
CSBV-SXYL-KU574662.1.pro	EGPAGI GKSEI VETLTTALLKGVNLKRPHSGATYFRMPGSRFWSGYRDQPVVVYDDWA NL	1439
AmSBV-Viet6-KM884995.1.pro	EGPAGI GKSEI VETLATELLKGVNLKRPHSGATYFRMPGSRFWSGYRDQPVVVYDDWA NL	1439
AcSBV-Viet Nam-KJ959613.1.pro	EGPAGI GKSEI VETLATELLKGVNLKRPHSGATYFRMPGSRFWSGYRDQPVVVYDDWA NL	1439
AcSBV-VietBP-KX668139.1.pro	EGPAGI GKSEI VETLATELLKGVNLKRPHSGATYLRMPGSR LWSGYRDQPVVVYDDWA NL	1439
AmSBV-Kor2-KP296801.1.pro	EGPAGI GKSEI VETLASELLKGVNLKRPHSGATYFRMPGSRFWSGYRDQPVVVYDDWA NL	1439
AmSBV-UK-AF092924.1.pro	EGPAGI GKSEI VETLATELLKGVNLKRPHSGATYFRMPGSRFWSGYRDQPVVVYDDWA NL	1438

C

+ Consensus #1

Consensus #1

Majority

EKKI RGNPLI VI LLCNHAF PDSAVTNMSLEPSAI Y
EKKI RGNPLI VI LLCNHAF PDSAVTNMSLEPSAI Y

1480

1490

1500

AmCSBV-SDLY.pro	EKKI RGNPLI VI LLCNHAF PDSAVTNMSLEPSAI Y	1487
AcSBV-Kor-HQ322114.1.pro	EKKI RGNPLI VI LLCNHAF PDSAVTNMSLEPSAI Y	1487
AcSBV-Kor4-KP296803.1.pro	EKKI RGNPLI VI LLCNHAF PDSAVTNMSLEPSAI Y	1487
AcSBV-Viet1-KM884990.1.pro	EKKI RGNPLI VI LLCNHAF PDSAVTNMSLEPSAI Y	1487
AcSBV-Viet2- KM884991.1.pro	EKKI RGNPLI VI LLCNHAF PDSAVTNMSLEPSAI Y	1487
AcSBV-Viet3-KM884992.1.pro	EKKI RGNPLI VI LLCNHAF PDSAVTNMSLEPSAI Y	1487
AcSBV-Viet5-KM884994.1.pro	EKKI RGNPLI VI LLCNHAF PDSAVTNMSLEPSAI Y	1487
AcSBV-VietHYnor-KJ959614.1.pro	EKKI RGNPLI VI LLCNHAF PDSAVTNMSLEPSAI Y	1487
AmSBV-Viet4-KM884993.1.pro	EKKI RGNPLI VI LLCNHAF PDSAVTNMSLEPSAI Y	1487
AmSBV-Kor19-JQ390592.1.pro	EKKI RGNPLI VI LLCNHAF PDSAVTNMSLEPSAI Y	1487
CSBV-JL2014-KU574661.1.pro	EKKI RGNPLI VI LLCNHAF PDSAVTNMSLEPSAI Y	1487
AcSBV-VietNA-KX668140.1.pro	EKKI RGNPLI VI LLCNHAF PDSAVTNMSLEPSAI Y	1487
CSBV-FZ-KM495267.1.pro	EKKI RGNPLI VI LLCNHAF PDSAVTNMSLEPSAI Y	1491
CSBV-LN2009-HM237361.1.pro	EKKI RGNPLI VI LLCNHAF PDSAVTNMSLEPSAI Y	1491
CSBV-GD-AF469603.1.pro	EKKI RGNPLI VI LLCNHAF PDSAVTNMSLEPSAI Y	1504
CSBV-BJ2012-KF960044.1.pro	EKKI RGNPLI VI LLCNHAF PDSAVTNMSLEPSAI Y	1504
CSBV-SXnor1-KJ000692.1.pro	EKKI RGNPLI VI LLCNHAF PDSAVTNMSLEPSAI Y	1504
CSBV-SXYL-KU574662.1.pro	EKKI RGNPLI VI LLCNHAF PDSAVTNMSLEPSAI Y	1504
AmSBV-Viet6-KM884995.1.pro	EKKI RGNPLI VI LLCNHAF PDSAVTNMSLEPSAI Y	1504
AcSBV-Viet Nam-KJ959613.1.pro	EKKI RGNPLI VI LLCNHAF PDSAVTNMSLEPSAI Y	1504
AcSBV-VietBP-KX668139.1.pro	EKKI RGNPLI VI LLCNHAF PDSAVTNMSLEPSAI Y	1504
AmSBV-Kor2-KP296801.1.pro	EKKI RGNPLI VI LLCNHAF PDSAVTNMSLEPSAI Y	1504
AmSBV-UK-AF092924.1.pro	EKKI RGNPLI VI LLCNHAF PDSAVTNMSLEPSAI Y	1503