

Name	Sequence
VvK5.1-V2-F1	5'-GATTTGAAAGAAGGCAAATGAATCGC-3'
VvK5.1-V2-R1	5'- CAGCAGACGAAACACTAAATATCTAG-3'
VvK5.1-V2-qP-3'-F1	5'-AGAGAGATCACAGATAAAATGCACC-3'
VvK5.1-V2-qP-3'-R1	5'-CATGATGCCAGGCCTTTTATGT-3'
EF1-F	5'-TCTGCCTTCTTCCTTGGGTA-3'
EF1-R	5'-GCACCTCGATCAAAAGAGGA-3'
VvK5.1-V2-up	5'-GGTTGTTGATGACGAAGACGATG-3'
VvK5.1-V2-down	5'-GAAGCAGCTACCGCCACTG-3'
T7P-VvK5.1-V2-up	5'-GAAATTAATACGACTCACTATAGGGAGAGGTTGTTGATGACGAAGA CGATG-3'
T7P-VvK5.1-V2-down	5'-GAAATTAATACGACTCACTATAGGGAGAGAAGCAGCTACCGCCACT G-3'
VvK5.1-prom-Fw1	5'-CCAAAATCTACTCAAGTCCAATCCC-3'
VvK5.1-prom-Rv1	5'-CGTCTTCGTCATCAACAACCTG-3'
VvK5.1-prom-Fw2	5'-GAAGAGTCGATTAAGGAGTATGAAGTG-3'
VvK5.1-prom-Rv2	5'-CCCCTCCCAACCAAATACATGA-3'

Table S1. Primers used in this study.

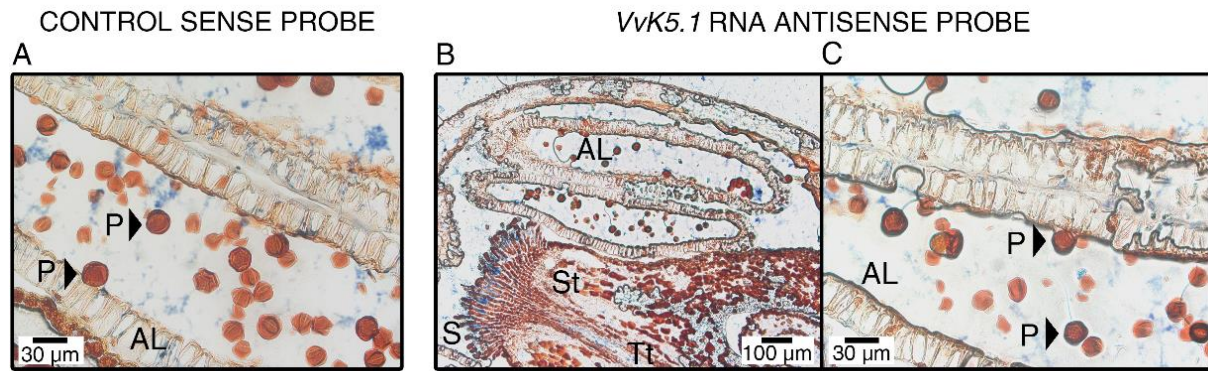


Fig. S1. *In situ* localization of *VvK5.1* transcripts in flowers, showing pollen (P). Longitudinal sections hybridized with the control sense probe (A) and the *VvK5.1* antisense probe (B and C) did not show any signal in pollen. P, pollen; AL, Anther locule; S, stigmas; St, style; Tt, transmitting track.