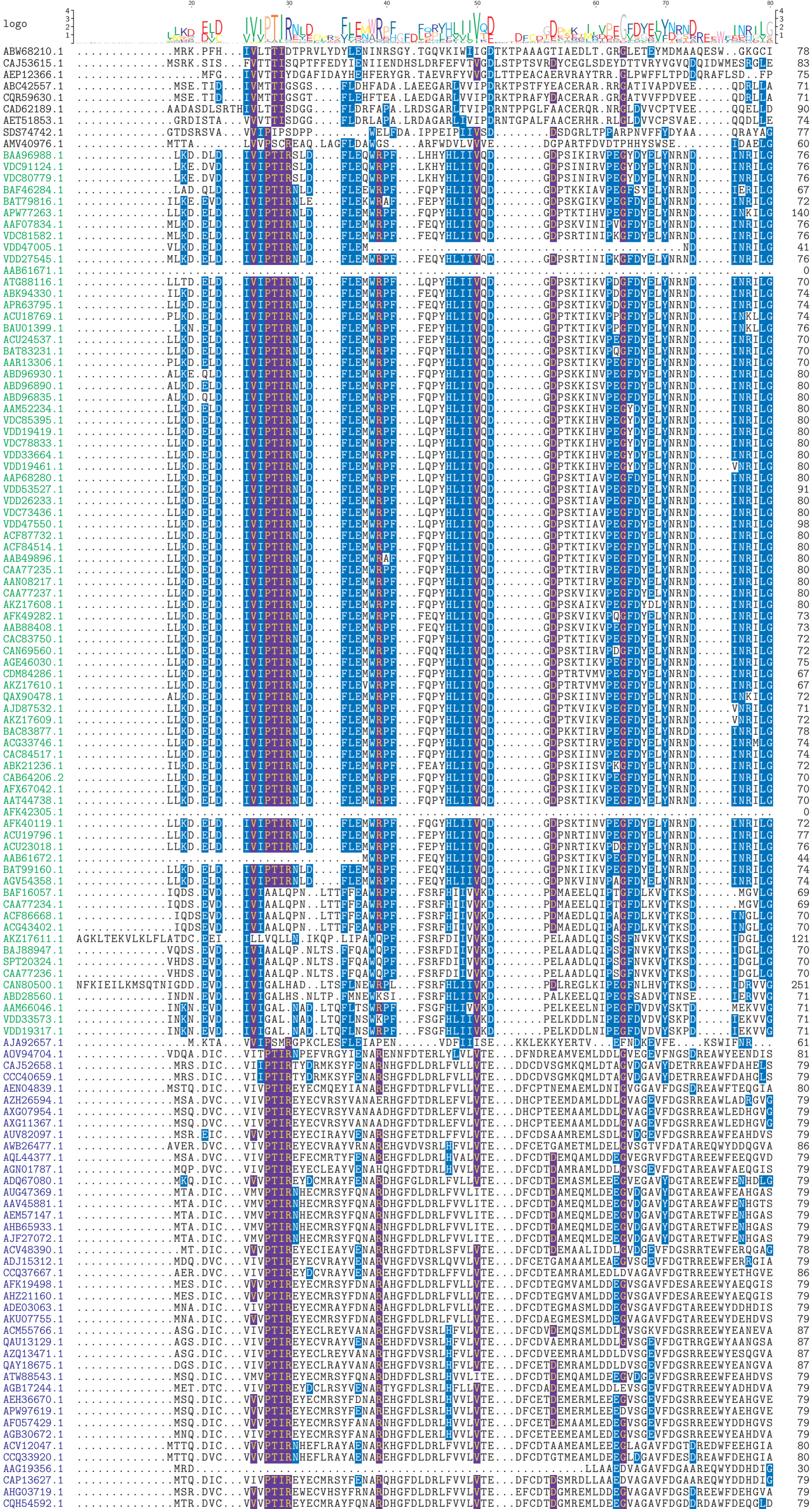
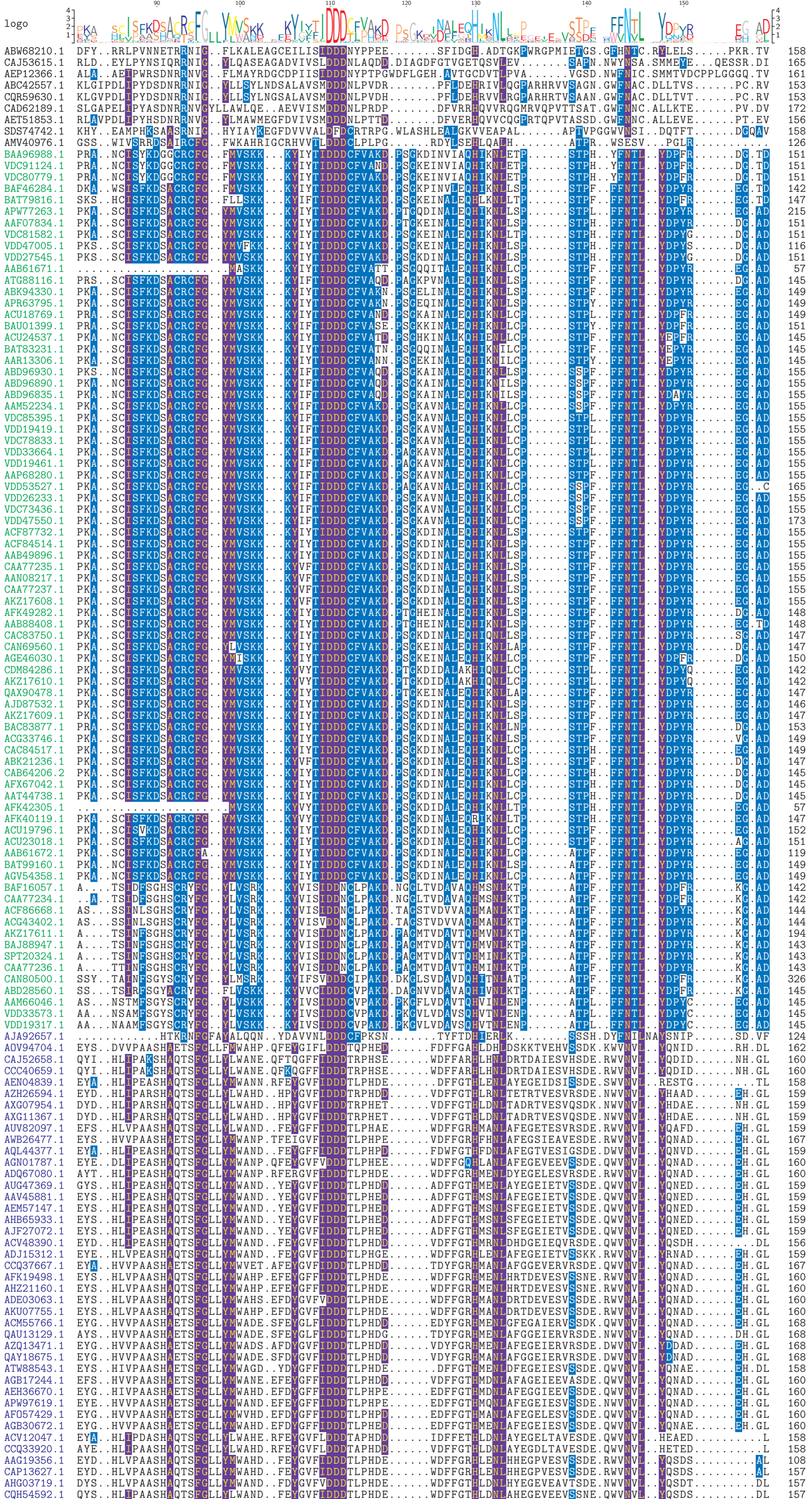


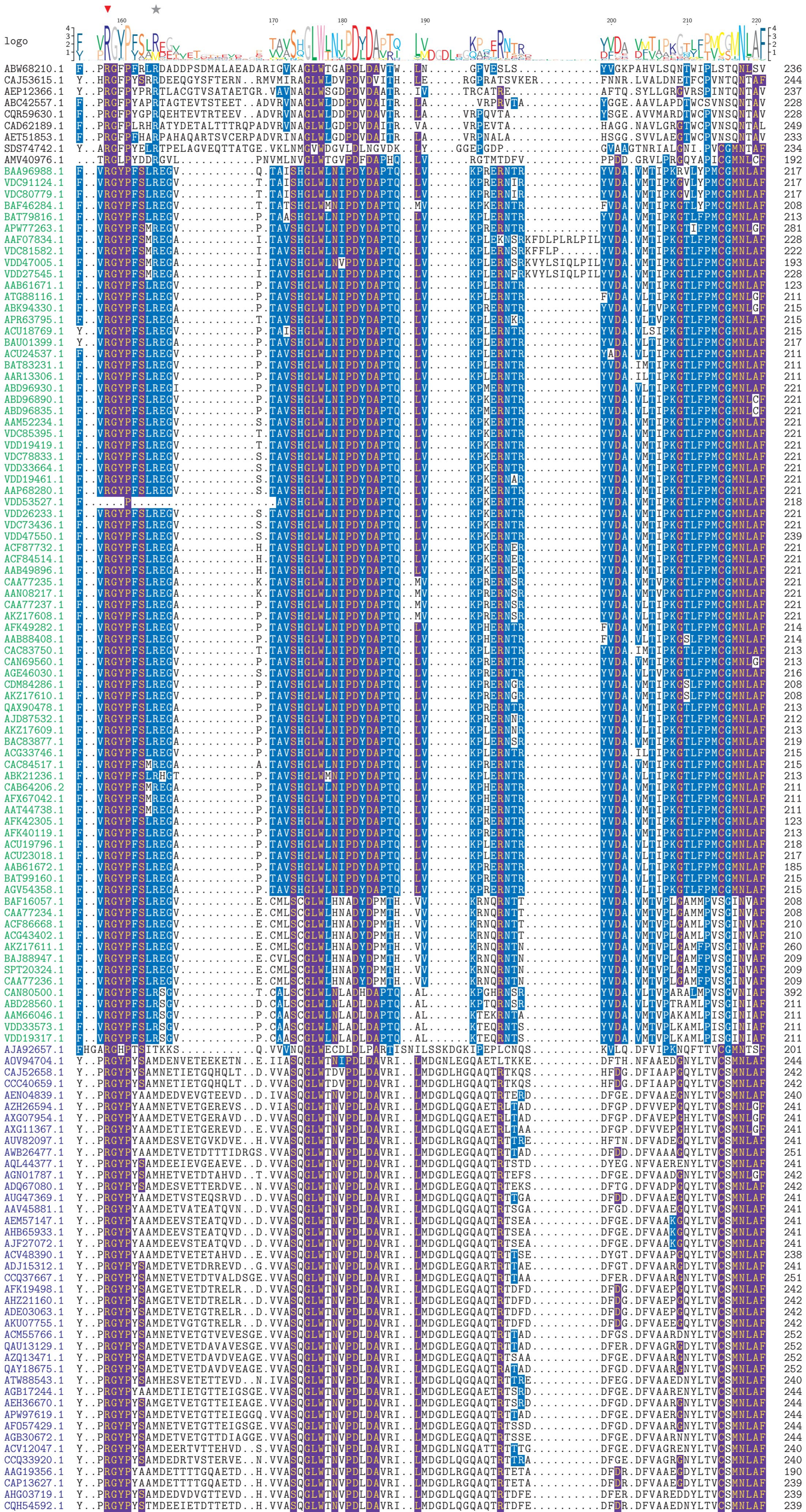
logo	4	3	2	1		
ABW68210.1	.	.	.	0		
CAJ53615.1	.	.	.	0		
AEP12366.1	.	.	.	0		
ABC42557.1	.	.	.	0		
CQR59630.1	.	.	.	0		
CAD62189.1	.	.	.	0		
AET51853.1	.	.	.	0		
SDS74742.1	.	.	.	0		
AMV40976.1	.	.	.	0		
BAA96988.1	.	.	.	0		
VDC91124.1	.	.	.	0		
VDC80779.1	.	.	.	0		
BAF46284.1	.	.	.	0		
BAT79816.1	.	.	.	0		
APW77263.1	.	.	.	5		
AAF07834.1	.	.	.	0		
VDC81582.1	.	.	.	0		
VDD47005.1	.	.	.	0		
VDD27545.1	.	.	.	0		
AAB61671.1	.	.	.	0		
ATG88116.1	.	.	.	0		
ABK94330.1	.	.	.	0		
APR63795.1	.	.	.	0		
ACU18769.1	.	.	.	0		
BAU01399.1	.	.	.	0		
ACU24537.1	.	.	.	0		
BAT83231.1	.	.	.	0		
AAR13306.1	.	.	.	0		
ABD96930.1	.	.	.	0		
ABD96890.1	.	.	.	0		
ABD96835.1	.	.	.	0		
AAM52234.1	.	.	.	0		
VDC85395.1	.	.	.	0		
VDD19419.1	.	.	.	0		
VDC78833.1	.	.	.	0		
VDD33664.1	.	.	.	0		
VDD19461.1	.	.	.	0		
AAP68280.1	.	.	.	0		
VDD53527.1	.	.	.	0		
VDD26233.1	.	.	.	0		
VDC73436.1	.	.	.	0		
VDD47550.1	.	.	.	0		
ACF87732.1	.	.	.	0		
ACF84514.1	.	.	.	0		
AAB49896.1	.	.	.	0		
CAA77235.1	.	.	.	0		
AAN08217.1	.	.	.	0		
CAA77237.1	.	.	.	0		
AKZ17608.1	.	.	.	0		
AFK49282.1	.	.	.	0		
AAB88408.1	.	.	.	0		
CAC83750.1	.	.	.	0		
CAN69560.1	.	.	.	0		
AGE46030.1	.	.	.	0		
CDM84286.1	.	.	.	0		
AKZ17610.1	.	.	.	0		
QAX90478.1	.	.	.	0		
AJD87532.1	.	.	.	0		
AKZ17609.1	.	.	.	0		
BAC83877.1	.	.	.	0		
ACG33746.1	.	.	.	0		
CAC84517.1	.	.	.	0		
ABK21236.1	.	.	.	0		
CAB64206.2	.	.	.	0		
AFX67042.1	.	.	.	0		
AAT44738.1	.	.	.	0		
AFK42305.1	.	.	.	0		
AFK40119.1	.	.	.	0		
ACU19796.1	.	.	.	0		
ACU23018.1	.	.	.	0		
AAB61672.1	.	.	.	0		
BAT99160.1	.	.	.	0		
AGV54358.1	.	.	.	0		
BAF16057.1	.	.	.	0		
CAA77234.1	.	.	.	0		
ACF86668.1	.	.	.	0		
ACG43402.1	.	.	.	0		
AKZ17611.1	.	.	.	0		
BAJ88947.1	.	.	.	0		
SPT20324.1	.	.	.	0		
CAA77236.1	.	.	.	0		
CAN80500.1	MAGTGP	IPELDILLACEQIQWSRNGG	EDERIKTHENEKYRLQRVRTLHLGVVDEVEEARLLVRIPQVPAGDGI	EKHHEEXESPDSGTAVVDEERRGQ	RVL	100
ABD28560.1	.	.	.	0		
AAM66046.1	.	.	.	0		
VDD33573.1	.	.	.	0		
VDD19317.1	.	.	.	0		
AJA92657.1	.	.	.	0		
AOV94704.1	.	.	.	0		
CAJ52658.1	.	.	.	0		
CCC40659.1	.	.	.	0		
AEN04839.1	.	.	.	0		
AZH26594.1	.	.	.	0		
AXG07954.1	.	.	.	0		
AXG11367.1	.	.	.	0		
AUV82097.1	.	.	.	0		
AWB26477.1	.	.	.	0		
AQL44377.1	.	.	.	0		
AGN01787.1	.	.	.	0		
ADQ67080.1	.	.	.	0		
AUG47369.1	.	.	.	0		
AAV45881.1	.	.	.	0		
AEM57147.1	.	.	.	0		
AHB65933.1	.	.	.	0		
AJF27072.1	.	.	.	0		
ACV48390.1	.	.	.	0		
ADJ15312.1	.	.	.	0		
CCQ37667.1	.	.	.	0		
AFK19498.1	.	.	.	0		
AHZ21160.1	.	.	.	0		
ADE03063.1	.	.	.	0		
AKU07755.1	.	.	.	0		
ACM55766.1	.	.	.	0		
QAU13129.1	.	.	.	0		
AZQ13471.1	.	.	.	0		
QAY18675.1	.	.	.	0		
ATW88543.1	.	.	.	0		
AGB17244.1	.	.	.	0		
AEH36670.1	.	.	.	0		
APW97619.1	.	.	.	0		
AF057429.1	.	.	.	0		
AGB30672.1	.	.	.	0		
ACV12047.1	.	.	.	0		
CCQ33920.1	.	.	.	0		
AAG19356.1	.	.	.	0		
CAP13627.1	.	.	.	0		
AHG03719.1	.	.	.	0		
CQH54592.1	.	.	.	0		

Logo	4 3 2 1	10	4 3 2 1
ABW68210.1			0
CAJ53615.1			0
AEP12366.1			0
ABC42557.1			0
CQR59630.1			0
CAD62189.1		MPDHEPAIPADRAD	14
AET51853.1		MS	2
SDS74742.1		MSTLAVDPADQRRP	15
AMV40976.1			0
BAA96988.1		MAGYNLEAIEAAP	13
VDC91124.1		MAGYNLEAIEAAP	13
VDC80779.1		MAGYNLEAIEAAP	13
BAF46284.1		MAAP	4
BAT79816.1		MSETGATA	8
APW77263.1	TVIYLIIQFHSTEFNSIHNSSTSSSSPLYIKPCVHSFVFTLQAKPSLSGRTERSQEEKKHITMAAPSTP		76
AAF07834.1		MAQLYSSVKPTP	12
VDC81582.1		MAQLYSSVKPTP	12
VDD47005.1		MSQLYFSMKPTP	12
VDD27545.1		MSQLYSSMKPTP	12
AAB61671.1			0
ATG88116.1		MASATH	6
ABK94330.1		MAGSSVKPTP	10
APR63795.1		MAGSAIKPTP	10
ACU18769.1		MADASVAPPP	10
BAU01399.1		MATATSYVTSPPP	13
ACU24537.1		MASATP	6
BAT83231.1		MAAPTP	6
AAR13306.1		MAAPTP	6
ABD96930.1		MIEPAKTVGIPVNTP	16
ABD96890.1		MVEPANTVGIPVNTP	16
ABD96835.1		MVQPANTVGIPVNTP	16
AAM52234.1		MVEPANTVGLPNTP	16
VDC85395.1		MVDPANTVGLPNTP	16
VDD19419.1		MVDPANTVGLPNTP	16
VDC78833.1		MVDPANTVGIPVNTP	16
VDD33664.1		MVDPANTVGIPVNTP	16
VDD19461.1		MVDPANTVGIPVNTP	16
AAP68280.1		MVEPANTVGIPVNHIP	16
VDD53527.1		LSLLQFSIESIMVEPANTVGIPLNHTA	27
VDD26233.1		MVEPANTVGIPLNHTA	16
VDC73436.1		MVEPANTVGIPLNHTA	16
VDD47550.1		MFISVSNNASLFLSLSNSIMVEPANTVGIPLNHTA	34
ACF87732.1		MAGTVTVPGSSKPTP	16
ACF84514.1		MAGTVTVPGSSTPSTP	16
AAB49896.1		MAGTVTVPGSSTPSTP	16
CAA77235.1		MAGTVTVSPSPVSTP	16
AAO8217.1		MAGTVTVSPASVPSTP	16
CAA77237.1		MAGTVTVPGSSVPSTP	16
AKZ17608.1		MAGTVTVPGSSVPSTP	16
AFK49282.1		MASSSKPTP	9
AAB88408.1		MASLKPPTP	9
CAC83750.1		MATVSPTP	8
CAN69560.1		MAGTPATP	8
AGE46030.1		MADSASIPNTP	11
CDM84286.1		MAP	3
AKZ17610.1		MAP	3
QAX90478.1		MANSKSSP	8
AJD87532.1		MATPTTP	7
AKZ17609.1		MAAAPSTP	8
BAC83877.1		MASSDAAAQAATP	14
ACG33746.1		MASASHAPT	10
CAC84517.1		MAGSSVTPTP	10
ABK21236.1		MAGPAPT	8
CAB64206.2		MAAATP	6
AFX67042.1		MAAATP	6
AAT44738.1		MAAATP	6
AFK42305.1			0
AFK40119.1		MATPSVP	8
ACU19796.1		MAQPSSSSKPVVP	13
ACU23018.1		MAEPSSSKPAVP	12
AAB61672.1			0
BAT99160.1		MADPSKPVVP	10
AGV54358.1		MADPSAKPVVP	10
BAF16057.1		MSLE	4
CAA77234.1		MSLE	4
ACF86668.1		MPLE	4
ACG43402.1		MPL	4
AKZ17611.1		MRTAPTLLALTLDAAALLRIATLRDLRSLPDHILFDLFRRTLS	42
BAJ88947.1		MSLE	4
SPT20324.1		MSLE	4
CAA77236.1		MSLE	4
CAN80500.1	LLCFISSNHGCVMPQRRLKAGKLTEKILMLFMATGKDEVLALIQSLNIQLINPVLPTISLSYCSFPLQDAP	R	172
ABD28560.1		MSQVI	5
AAM66046.1		MSLAE	5
VDD33573.1		MSSAE	5
VDD19317.1		MSSSE	5
AJA92657.1			0
AOV94704.1		M	1
CAJ52658.1			0
CCC40659.1			0
AEN04839.1			0
AZH26594.1			0
AXG07954.1			0
AXG11367.1			0
AUV82097.1			0
AWB26477.1		MSPSP	6
AQL44377.1			0
AGN01787.1			0
ADQ67080.1			0
AUG47369.1			0
AAV45881.1			0
AEM57147.1			0
AHB65933.1			0
AJF27072.1			0
ACV48390.1			0
ADJ15312.1			0
CCQ37667.1		MQSRPNR	7
AFK19498.1			0
AHZ21160.1			0
ADE03063.1			0
AKU07755.1			0
ACM55766.1		MEERRPDA	8
QAU13129.1		MVDTPPDA	8
AZQ13471.1		MEDSRSTA	8
QAY18675.1		MTATAPSG	8
ATW88543.1			0
AGB17244.1			0
AEH36670.1			0
APW97619.1			0
AF057429.1			0
AGB30672.1			0
ACV12047.1			0
CCQ33920.1			0
AAG19356.1			0
CAP13627.1			0
AHGO3719.1			0
CQH54592.1			0



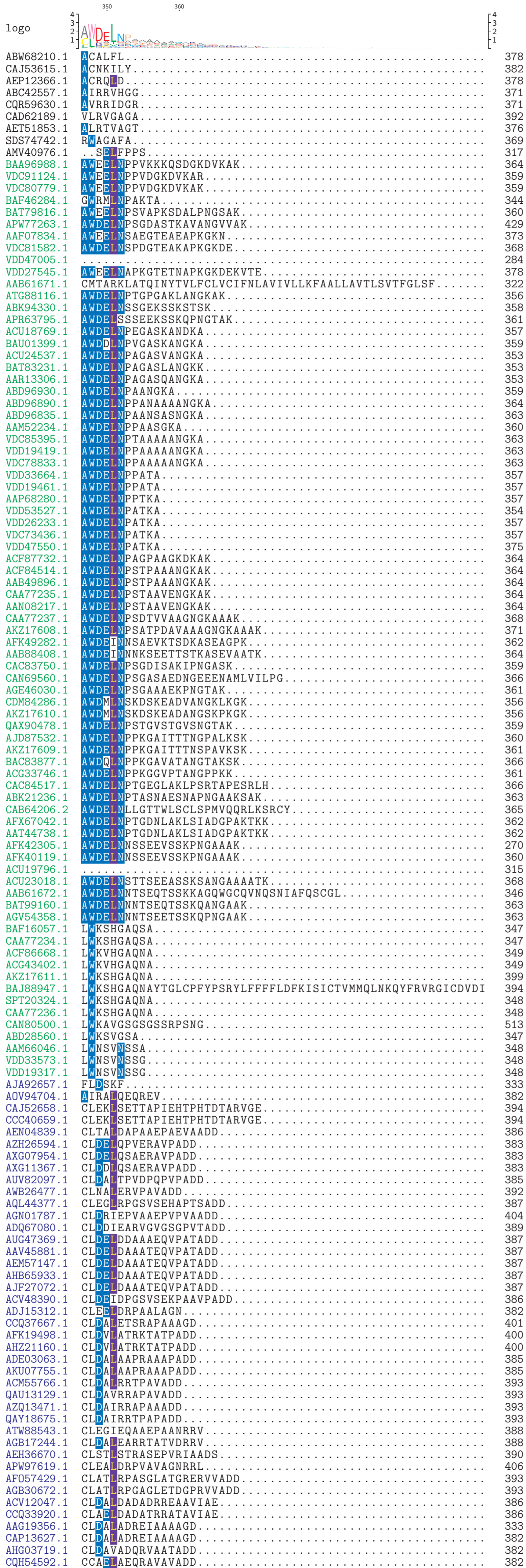
The DrD motif








	230	240	250	260	270	280	290	300															
ABW68210.1	CNLI	PAICLCVP	MGHMPGRLE	RYG	DVWG	GYFL	QALIRGT	CYHAAF	CHPTL	SRNPHDALAD	RREY	WML	LTD	LDL	LRLHR	...	321						
CAJ53615.1	HTDLM	PLIHTIP	MGDEVE	GMEIS	SRFD	DIWL	GFFA	EKILQEM	GTVA	YSPVSI	HDRNR	HLN	LRN	RE	HEAT	GLRLN	VI	DILEDI	...	329			
AEP12366.1	MMAAL	PAYYVVK	MGVSLA	GKLKLD	HFG	DIFS	GYFV	QLCAEAV	GHRVR	VSVE	HRRT	PHN	LY	VD	WHL	BLAG	MMV	LDML	PLETTP	...	322		
ABC42557.1	HHDAL	PAYYFLR	MQSIG	GAPVER	HFG	DIFS	GYFV	AACAKHL	GHAVER	GPLV	NHQR	NDH	LDL	DD	AI	BLPA	IRF	MD	ELLAWL	REF	...	313	
CQR59630.1	HHDAL	PAYYFLR	MQPIG	GAVER	HFG	DIFS	GYFV	AACAKHL	GHAVER	GPLV	NHQR	NEH	DL	LD	VI	ELPA	IRF	MD	ELLAWL	REF	...	313	
CAD62189.1	HHDAL	PAYYFLR	MQQRV	GVVER	HFG	DIFS	GYFL	QACAQHL	GHAVER	GPLV	DHPR	NEH	DL	LD	TK	ELPA	IRF	MD	ELLAWL	REF	...	334	
AET51853.1	HHDAL	PAYYFLR	MQPVD	GVVER	HFG	DIFS	GYFV	QVCAQHL	GHAVER	GPLV	VEH	PRNE	H	DL	DK	ELPA	IRF	MD	ELLAWL	REF	...	318	
SDS74742.1	AAELT	PAYYFLPD	VWVN	GWQLS	RHD	DIWG	GYVVA	KKLMDLR	GLDFA	GAPV	VEHT	NQ	TRLER	V	VLE	QW	MHL	MSV	PFYEL	VDEA	...	317	
AMV40976.1	RREFA	PLAYFPL	QCE	GWYRR	RFD	DIWF	GVIA	QKACDHL	GQITM	GRV	WRH	AR	ASDV	Y	QN	V	KEAP	IG	FN	ER	FRV	...	273
BAA96988.1	NREL	GPAMYFGL	MGE	GQPI	SRD	DMWA	GWAA	KVICDHL	GFGV	KTGL	PL	IW	HS	KASNP	FVNL	KK	KEYK	GLH	WQ	DM	V	...	299
VDC91124.1	NREL	GPAMYFGL	MGE	GQPI	SRD	DMWA	GWAA	KVICDHL	GFGV	KTGL	PL	IW	HS	KASNP	FVNL	KK	KEYK	GLH	WQ	DM	V	...	299
VDC80779.1	NREL	GPAMYFGL	MGE	GQPI	SRD	DMWA	GWAA	KVICDHL	GFGV	KTGL	PL	IW	HS	KASNP	FVNL	KK	KEYK	GLH	WQ	DM	V	...	299
BAF46284.1	DREL	IGAMYFGL	MGE	GQPI	GRYD	DMWA	GWCT	KVICDHL	GFGV	KTGL	PL	IW	HS	KASNP	FVNL	KK	KEYK	GLH	WQ	DM	V	...	290
BAT79816.1	NREL	IGAMYFGL	MGE	GQPI	GRYD	DMWA	GWCM	KVICDHL	GFGV	KTGL	PL	IW	HS	KASNP	FVNL	KK	KEYK	GLH	WQ	DM	V	...	295
APW77263.1	NREL	IGAMYFGL	MGE	GQPI	GRYD	DMWA	GWCT	KVICDHL	GFGV	KTGL	PL	IW	HS	KASNP	FVNL	KK	KEYK	GLH	WQ	DM	V	...	363
AAF07834.1	DREL	IGAMYFGL	MGE	GQPI	GRYD	DMWA	GWCV	KVICDHL	GFGV	KTGL	PL	IW	HS	KASNP	FVNL	KK	KEYK	GLH	WQ	DM	V	...	310
VDC81582.1	DREL	IGAMYFGL	MGE	GQPI	GRYD	DMWA	GWCV	KVICDHL	GFGV	KTGL	PL	IW	HS	KASNP	FVNL	KK	KEYK	GLH	WQ	DM	V	...	304
VDD47005.1	DREL	IGAMYFGL	MGE	GQPI	GRYD	DMWA	GWCV	KVICDHL	GFGV	KTGL	PL	IW	HS	KASNP	FVNL	KK	KEYK	GLH	WQ	DM	V	...	275
VDD27545.1	DREL	IGAMYFGL	MGE	GQPI	GRYD	DMWA	GWCV	KVICDHL	GFGV	KTGL	PL	IW	HS	KASNP	FVNL	KK	KEYK	GLH	WQ	DM	V	...	310
AAB61671.1	DREL	IGAMYFGL	MGE	GQPI	GRYD	DMWA	GWCC	KVICDHL	GFGV	KTGL	PL	IW	HS	KASNP	FVNL	KK	KEYK	GLH	WQ	DM	V	...	205
ATG88116.1	DREL	IGAMYFGL	MGE	GQPI	GRYD	DMWA	GWCI	KVICDHL	GFGV	KTGL	PL	IW	HS	KASNP	FVNL	KK	KEYK	GLH	WQ	DM	V	...	293
ABK94330.1	NREL	IGAMYFGL	MGE	GQPI	GRYD	DMWA	GWCM	KVICDHL	GFGV	KTGL	PL	IW	HS	KASNP	FVNL	KK	KEYK	GLH	WQ	DM	V	...	297
APR63795.1	NREL	IGAMYFGL	MGE	GQPI	GRYD	DMWA	GWCM	KVICDHL	GFGV	KTGL	PL	IW	HS	KASNP	FVNL	KK	KEYK	GLH	WQ	DM	V	...	297
ACU18769.1	DREL	IGAMYFGL	MGE	GQPI	GRYD	DMWA	GWCC	KVICDHL	GFGV	KTGL	PL	IW	HS	KASNP	FVNL	KK	KEYK	GLH	WQ	DM	V	...	297
BAU01399.1	DREL	IGAMYFGL	MGE	GQPI	GRYD	DMWA	GWCC	KVICDHL	GFGV	KTGL	PL	IW	HS	KASNP	FVNL	KK	KEYK	GLH	WQ	DM	V	...	299
ACU24537.1	DREL	IGAMYFGL	MGE	GQPI	GRYD	DMWA	GWCC	KVICDHL	GFGV	KTGL	PL	IW	HS	KASNP	FVNL	KK	KEYK	GLH	WQ	DM	V	...	293
BAT83231.1	DREL	IGAMYFGL	MGE	GQPI	GRYD	DMWA	GWCC	KVICDHL	GFGV	KTGL	PL	IW	HS	KASNP	FVNL	KK	KEYK	GLH	WQ	DM	V	...	293
AAR13306.1	DREL	IGAMYFGL	MGE	GQPI	GRYD	DMWA	GWCC	KVICDHL	GFGV	KTGL	PL	IW	HS	KASNP	FVNL	KK	KEYK	GLH	WQ	DM	V	...	293
ABD96930.1	DREL	IGAMYFGL	MGE	GQPI	GRYD	DMWA	GWCV	KVICDHL	GFGV	KTGL	PL	IW	HS	KASNP	FVNL	KK	KEYK	GLH	WQ	DM	V	...	303
ABD96890.1	DREL	IGAMYFGL	MGE	GQPI	GRYD	DMWA	GWCV	KVICDHL	GFGV	KTGL	PL	IW	HS	KASNP	FVNL	KK	KEYK	GLH	WQ	DM	V	...	303
ABD96835.1	DREL	IGAMYFGL	MGE	GQPI	GRYD	DMWA	GWCV	KVICDHL	GFGV	KTGL	PL	IW	HS	KASNP	FVNL	KK	KEYK	GLH	WQ	DM	V	...	303
AAM52234.1	DREL	IGAMYFGL	MGE	GQPI	GRYD	DMWA	GWCI	KVICDHL	GFGV	KTGL	PL	IW	HS	KASNP	FVNL	KK	KEYK	GLH	WQ	DM	V	...	303
VDC85395.1	DREL	IGAMYFGL	MGE	GQPI	GRYD	DMWA	GWCI	KVICDHL	GFGV	KTGL	PL	IW	HS	KASNP	FVNL	KK	KEYK	GLH	WQ	DM	V	...	303
VDD19419.1	DREL	IGAMYFGL	MGE	GQPI	GRYD	DMWA	GWCI	KVICDHL	GFGV	KTGL	PL	IW	HS	KASNP	FVNL	KK	KEYK	GLH	WQ	DM	V	...	303
VDC78833.1	DREL	IGAMYFGL	MGE	GQPI	GRYD	DMWA	GWCI	KVICDHL	GFGV	KTGL	PL	IW	HS	KASNP	FVNL	KK	KEYK	GLH	WQ	DM	V	...	303
VDD33664.1	DREL	IGAMYFGL	MGE	GQPI	GRYD	DMWA	GWCI	KVICDHL	GFGV	KTGL	PL	IW	HS	KASNP	FVNL	KK	KEYK	GLH	WQ	DM	V	...	303
VDD19461.1	DREL	IGAMYFGL	MGE	GQPI	GRYD	DMWA	GWCI	KVICDHL	GFGV	KTGL	PL	IW	HS	KASNP	FVNL	KK	KEYK	GLH	WQ	DM	V	...	303
AAP68280.1	DREL	IGAMYFGL	MGE	GQPI	GRYD	DMWA	GWCI	KVICDHL	GFGV	KTGL	PL	IW	HS	KASNP	FVNL	KK	KEYK	GLH	WQ	DM	V	...	303
VDD53527.1	DREL	IGAMYFGL	MGE	GQPI	GRYD	DMWA	GWCV	KVICDHL	GFGV	KTGL	PL	IW	HS	KASNP	FVNL	KK	KEYK	GLH	WQ	DM	V	...	300
VDD26233.1	DREL	IGAMYFGL	MGE	GQPI	GRYD	DMWA	GWCV	KVICDHL	GFGV	KTGL	PL	IW	HS	KASNP	FVNL	KK	KEYK	GLH	WQ	DM	V	...	303
VDC73436.1	DREL	IGAMYFGL	MGE	GQPI	GRYD	DMWA	GWCV	KVICDHL	GFGV	KTGL	PL	IW	HS	KASNP	FVNL	KK	KEYK	GLH	WQ	DM	V	...	303
VDD47550.1	DREL	IGAMYFGL	MGE	GQPI	GRYD	DMWA	GWCV	KVICDHL	GFGV	KTGL	PL	IW	HS	KASNP	FVNL	KK	KEYK	GLH	WQ	DM	V	...	321
ACF87732.1	DREL	IGAMYFGL	MGE	GQPI	GRYD	DMWA	GWCV	KVICDHL	GFGV	KTGL	PL	IW	HS	KASNP	FVNL	KK	KEYK	GLH	WQ	DM	V	...	303
ACF84514.1	DREL	IGAMYFGL	MGE	GQPI	GRYD	DMWA	GWCV	KVICDHL	GFGV	KTGL	PL	IW	HS	KASNP	FVNL	KK	KEYK	GLH	WQ	DM	V	...	303
AAB49896.1	DREL	IGAMYFGL	MGE	GQPI	GRYD	DMWA	GWCV	KVICDHL	GFGV	KTGL	PL	IW	HS	KASNP	FVNL	KK	KEYK	GLH	WQ	DM	V	...	303
CAAT7235.1	DREL	IGAMYFGL	MGE	GQPI	GRYD	DMWA	GWCM	KVICDHL	GFGV	KTGL	PL	IW	HS	KASNP	FVNL	KK	KEYK	GLH	WQ	DM	V	...	303
AAN08217.1	DREL	IGAMYFGL	MGE	GQPI	GRYD	DMWA	GWCM	KVICDHL	GFGV	KTGL	PL	IW	HS	KASNP	FVNL	KK	KEYK	GLH	WQ	DM	V	...	303
CAAT7237.1	DREL	IGAMYFGL	MGE	GQPI	GRYD	DMWA	GWCV	KVICDHL	GFGV	KTGL	PL	IW	HS	KASNP	FVNL	KK	KEYK	GLH	WQ	DM	V	...	303
AKZ17608.1	DREL	IGAMYFGL	MGE	GQPI	GRYD	DMWA	GWCV	KVICDHL	GFGV	KTGL	PL	IW	HS	KASNP	FVNL	KK	KEYK	GLH	WQ	DM	V	...	303
AFK49282.1	DREL	IGAMYFGL	MGE	GQPI	GRYD	DMWA	GWCI	KVICDHL	GFGV	KTGL	PL	IW	HS	KASNP	FVNL	KK	KEYK	GLH	WQ	DM	V	...	296
AAB88408.1	NREL	IGAMYFGL	MGE	GQPI	GRYD	DMWA	GWCI	KVICDHL	GFGV	KTGL	PL	IW	HS	KASNP	FVNL	KK	KEYK	GLH	WQ	DM	V	...	296
CAC83750.1	NREL	IGAMYFGL	MGE	GQPI	GRYD	DMWA	GWCT	KVICDHL	GFGV	KTGL	PL	IW	HS	KASNP	FVNL	KK	KEYK	GLH	WQ	DM	V	...	295
CAN69560.1	NREL	IGAMYFGL	MGE	GQPI	GRYD	DMWA	GWCT	KVICDHL	GFGV	KTGL	PL	IW	HS	KASNP	FVNL	KK	KEYK	GLH	WQ	DM	V	...	295
AGE46030.1	DREL	IGAMYFGL	MGE	GQPI	GRYD	DMWA	GWCT	KVICDHL	GFGV	KTGL	PL	IW	HS	KASNP	FVNL	KK	KEYK	GLH	WQ	DM	V	...	298
CDM84286.1	DREL	IGAMYFGL	MGE	GQPI	GRYD	DMWA	GWCV	KVICDHL	GFGV	KTGL	PL	IW	HS	KASNP	FVNL	KK	KEYK	GLH	WQ	DM	V	...	290
AKZ17610.1	DREL	IGAMYFGL	MGE	GQPI	GRYD	DMWA	GWCV	KVICDHL	GFGV	KTGL	PL	IW	HS	KASNP	FVNL	KK	KEYK	GLH	WQ	DM	V	...	290
QAX90478.1	DREL	IGAMYFGL	MGE	GQPI	GRYD	DMWA	GWCT	KVICDHL	GFGV	KTGL	PL	IW	HS	KASNP	FVNL	KK	KEYK	GLH	WQ	DM	V	...	295
AJD87532.1	DREL	IGAMYFGL	MGE	GQPI	GRYD	DMWA	GWCT	KVICDHL	GFGV	KTGL	PL	IW	HS	KASNP	FVNL	KK	KEYK	GLH	WQ	DM	V	...	294
AKZ17609.1	DREL	IGAMYFGL	MGE	GQPI	GRYD	DMWA	GWCT	KVICDHL	GFGV	KTGL	PL	IW	HS	KASNP	FVNL	KK	KEYK	GLH	WQ	DM	V	...	295
BAC83877.1	DREL	IGAMYFGL	MGE	GQPI	GRYD	DMWA	GWCT	KVICDHL	GFGV	KTGL	PL	IW	HS	KASNP	FVNL	KK	KEYK	GLH	WQ	DM	V	...	301
ACG33746.1	DREL	IGAMYFGL	MGE	GQPI	GRYD	DMWA	GWCT	KVICDHL	GFGV	KTGL	PL	IW	HS	KASNP	FVNL	KK	KEYK	GLH	WQ	DM	V	...	297
CAC84517.1	DREL	IGAMYFGL	MGE	GQPI	GRYD	DMWA	GWCI	KVICDHL	GFGV	KTGL	PL	IW	HS	KASNP	FVNL	KK	KEYK	GLH	WQ	DM	V	...	297
ABK21236.1	DREL	IGAMYFGL	MGE	GQPI	GRYD	DMWA	GWCI	KVICDHL	GFGV	KTGL	PL	IW	HS	KASNP	FVNL	KK	KEYK	GLH	WQ	DM	V	...	295
CAB64206.2	DREL	IGAMYFGL	MGE	GQPI	GRYD	DMWA	GWCT	KVICDHL	GFGV	KTGL	PL	IW	HS	KASNP	FVNL	KK	KEYK	GLH	WQ	DM	V	...	293
AFX67042.1	DREL	IGAMYFGL	MGE	GQPI	GRYD	DMWA	GWCT	KVICDHL	GFGV	KTGL	PL	IW	HS	KASNP	FVNL	KK	KEYK	GLH	WQ	DM	V	...	293
AAT44738.1	DREL	IGAMYFGL	MGE	GQPI	GRYD	DMWA	GWCT	KVICDHL	GFGV	KTGL	PL	IW	HS	KASNP	FVNL	KK	KEYK	GLH	WQ	DM	V	...	293
AFK42305.1	DREL	IGAMYFGL	MGE	GQPI	GRYD	DMWA	GWCI	KVICDHL	GFGV	KTGL	PL	IW	HS	KASNP	FVNL	KK	KEYK	GLH	WQ	DM	V	...	205
AFK40119.1	DREL	IGAMYFGL	MGE	GQPI	GRYD	DMWA	GWCI	KVICDHL	GFGV	KTGL	PL	IW	HS	KASNP	FVNL	KK	KEYK	GLH	WQ	DM	V	...	295
ACU19796.1	DREL	IGAMYFGL	MGE	GQPI	GRYD	DMWA	GWCV	KVICDHL	GFGV	KTGL	PL	IW	HS	KASNP	FVNL	KK	KEYK	GLH	WQ	DM	V	...	300
ACU23018.1	DREL	IGAMYFGL	MGE	GQPI	GRYD	DMWA	GWCV	KVICDHL	GFGV	KTGL	PL	IW	HS	KASNP	FVNL	KK	KEYK	GLH	WQ	DM	V	...	299
AAB61672.1	DREL	IGAMYFGL	MGE	GQPI	GRYD	DMWA	GWCV	KVICDHL	GFGV	KTGL	PL	IW	HS	KASNP	FVNL	KK	KEYK	GLH	WQ	DM	V	...	267
BAT99160.1	DREL	IGAMYFGL	MGE	GQPI	GRYD	DMWA	GWCV	KVICDHL	GFGV</														

Logo	310	320	330	340		
ABW68210.1	.FAPSA	.PAMTDRTRE	.GDFLRDEATLVDPWCPPEVGFMAITG	.ENLRLWAD	372	
CAJ53615.1	.KISG	.STYPECYRDI	.IEKFRQ...QVRSEGSYSLQAYLKEML	.DGMVWAD	375	
AEP12366.1	.LTPA	.TDYGTAALE	.ADRIEAWAAGQNGFLWGEALDYFRNVVA	.ANLRLWA	372	
ABC42557.1	.PIEG	.SDYRESYES	.SYGLQDFAEQARGGWTPDARAFLHRS	.HLNRWL	363	
CQR59630.1	.PLEG	.GDYQEAYDS	.SHGLQDFAEQAGRAWTPPEARAFHRS	.HMRWLS	363	
CAD62189.1	.PLEG	.GDYFTAYEA	.SHGLQDFAEEASPAWTADARAFHRS	.HLNRWLG	384	
AET51853.1	.PLEG	.GDYLETYES	.SYALQEAERVNGRAWSPDARAFHRS	.HLNRWLG	368	
SDS74742.1	.VAEVSP	.GPYAQMFAHFVEEFRD	.VV.GASRAPVHYRAVF	.AELGDM	362	
AMV40976.1	.DLSGC	.ATPCECIRR	.VGQDLAR...GEVD.VLRRLG	.GALREW	310	
BAA96988.1	.RLSKES	.DTAARCYME	.ISNMTKE...KLTAKVDPY	.DAMVWIE	342	
VDC91124.1	.RLSKES	.DTAARCYME	.ISNMTKE...KLTAKVDPY	.DAMVWIE	342	
VDC80779.1	.RHSRES	.DTAARCYME	.ISNMTKE...KLTAKVDPY	.DAMVWIE	342	
BAF46284.1	.TLTKTC	.TNAEECYIE	.LADKVRK...GLGHIDPY	.DGNIAWIE	333	
BAT79816.1	.SLPKKEC	.TTAQCIVEL	.SKQVKA...KLGKVDY	.DAMVWIE	338	
APW77263.1	.KLPKEC	.TTVQCYEL	.LAKQVKA...ELTTVDPY	.DAMVWIE	406	
AAF07834.1	.TLPKEC	.TSVQCYEL	.AKLVRE...KLGKVDY	.TGMVWIE	353	
VDC81582.1	.ALPKKEC	.TSVQCYME	.MAKLVE...KLGKVDY	.DGMVWIE	347	
VDD47005.1	.TLPKEC	.DSV			284	
VDD27545.1	.TLPKEC	.DSVQCYIE	.LAKLVKE...KLGKVDY	.DRMVWIE	353	
AAB61671.1	.VLPKEA	.TTVQCYIV	.LAKLVKE...KLSKVDY	.KLNQLWAN	273	
ATG88116.1	.VLPKDC	.TTVQCYVEL	.SKQVKE...KLSKVDY	.EAMVWIE	336	
ABK94330.1	.VLPKEC	.TTVQCYIE	.LAKQVKE...KLGKVDY	.DAMVWIE	340	
APR63795.1	.VLPKEC	.TTVQCYIE	.LAKQVKE...KLGKVDY	.DAMVWIE	340	
ACU18769.1	.VLPKEC	.TTVQCYIE	.LAKQVKE...KLSKIDY	.DAMVWIE	340	
BAU01399.1	.VLPKEC	.TTVQCYIE	.LAKQVKE...KLSKIDY	.DAMVWIE	342	
ACU24537.1	.VLPKEA	.TTVQCYIE	.LAKQVKE...KLTAKVDPY	.DAMVWIE	336	
BAT83231.1	.VLPKEA	.TTVQCYIE	.LAKQVKE...KLSKIDY	.DAMVWIE	336	
AAR13306.1	.VLPKEA	.TTVQCYIE	.LAKQVKE...KLSKIDY	.DAMVWIE	336	
ABD96930.1	.KLSKEC	.TTVQCYIE	.LAKQVKE...KLSIDY	.EAMVWIE	346	
ABD96890.1	.KLPKEC	.TTVQCYME	.SKMVKE...KLSIDY	.EAMVWIE	346	
ABD96835.1	.KLPKEC	.TTVQCYIE	.SKLVKE...KLSIDY	.EAMVWIE	346	
AAM52234.1	.KLSKEA	.TTVQCYIE	.SKMVKE...KLSIDY	.DAMVWIE	346	
VDC85395.1	.KLSKEA	.TTVQCYIE	.SKMVKE...KLSIDY	.DAMVWIE	346	
VDD19419.1	.KLSKEA	.TTVQCYIE	.SKMVKE...KLSIDY	.DAMVWIE	346	
VDC78833.1	.KLSKEA	.TTVQCYIE	.SKMVKE...KLSIDY	.DAMVWIE	346	
VDD33664.1	.KLSKEA	.TTVQCYIE	.SKMVKE...KLSIDY	.DAMVWIE	346	
VDD19461.1	.KLSKEA	.TTVQCYIE	.SKMVKE...KLSIDY	.DAMVWIE	346	
AAP68280.1	.KLTKEA	.TTVQCYIE	.SKLVKE...KLSIDY	.DAMVWIE	346	
VDD53527.1	.KLSKEA	.TTVQCYIE	.SKMVKE...KLSIDY	.DAMVWIE	346	
VDD26233.1	.KLSKEA	.TTVQCYIE	.SKMVKE...KLSIDY	.DAMVWIE	346	
VDC73436.1	.KLSKEA	.TTVQCYIE	.SKLVKE...KLSIDY	.DAMVWIE	346	
VDD47550.1	.KLSKEA	.TTVQCYIE	.SKMVKE...KLSIDY	.DAMVWIE	346	
ACF87732.1	.TIPKDC	.DTVQCYIE	.SGQVKE...KLGKIDY	.DAMVWIE	346	
ACF84514.1	.TIPKDC	.DTVQCYIE	.SGQVKE...KLGKIDY	.DAMVWIE	346	
AAB49896.1	.TIPKDC	.DTVQCYIE	.SGQVKE...KLGKIDY	.DAMVWIE	346	
CAA77235.1	.TIPKEC	.DTVQCYIE	.LAEQVRE...KLGKIDY	.DAMVWIE	346	
AAO8217.1	.TIPKEC	.DTVQCYIE	.LAEQVRE...KLGKIDY	.DAMVWIE	346	
CAA77237.1	.SLPKKEC	.DTVQCYIE	.LAEQVRE...KLGKIDY	.DAMVWIE	346	
AKZ17608.1	.TLPKEC	.DTVQCYIE	.LAEQVRE...KLGKIDY	.DAMVWIE	346	
AFK49282.1	.TLPKDC	.TSVQCYIE	.LAEQVRE...KLGKIDY	.DAMVWIE	339	
AAB88408.1	.TLPKDC	.TSVQCYIE	.LAEQVRE...KLGKIDY	.DAMVWIE	339	
CAC83750.1	.ALPKDC	.TTVQCYIE	.LAEQVRE...KLGKIDY	.DAMVWIE	338	
CAN69560.1	.ILPKKEC	.TTVQCYIE	.LAEQVRE...KLGKIDY	.DAMVWIE	338	
AGE46030.1	.VLPKDC	.TTVQCYIE	.LAEQVRE...KLGKIDY	.DAMVWIE	341	
CDM84286.1	.KLTKEC	.DTVQCYIE	.LAEQVRE...KLGKIDY	.DAMVWIE	333	
AKZ17610.1	.KLTKEC	.DTVQCYIE	.LAEQVRE...KLGKIDY	.DAMVWIE	333	
QAX90478.1	.TLPKDC	.DTVQCYIE	.LAEQVRE...KLGKIDY	.DAMVWIE	338	
AJD87532.1	.TLPKDC	.DTVQCYIE	.LAEQVRE...KLGKIDY	.DAMVWIE	337	
AKZ17609.1	.TLPKDC	.DTVQCYIE	.LAEQVRE...KLGKIDY	.DAMVWIE	338	
BAC83877.1	.SLPKKEA	.TTVQCYIE	.LAEQVRE...KLGKIDY	.DSMVWIE	344	
ACG33746.1	.SLPKKEA	.TTVQCYIE	.LAEQVRE...KLGKIDY	.DSMVWIE	340	
CAC84517.1	.TLPKDC	.TSVQCYIE	.LAEQVRE...KLGKIDY	.DAMVWIE	340	
ABK21236.1	.TLPKEC	.TSVQCYIE	.LAEQVRE...KLGKIDY	.DAMVWIE	338	
CAB64206.2	.TLPKEC	.TSVQCYIE	.LAEQVRE...KLGKIDY	.EAMVWIE	336	
AFX67042.1	.TLPKEC	.TSVQCYIE	.LAEQVRE...KLGKIDY	.EAMVWIE	336	
AAT44738.1	.TLPKEC	.TSVQCYIE	.LAEQVRE...KLGKIDY	.DAMVWIE	336	
AFK42305.1	.TLPKDC	.TSVQCYIE	.LAEQVRE...KLGKIDY	.DAMVWIE	248	
AFK40119.1	.TLPKDC	.TSVQCYIE	.LAEQVRE...KLGKIDY	.DAMVWIE	338	
ACU19796.1	.TLPKDC	.TSVQ	.KKKKK		315	
ACU23018.1	.TLPKEC	.TSVQCYIE	.LAEQVRE...KLGKIDY	.DAMVWIE	342	
AAB61672.1	.TLPKEC	.TSVQCYIE	.LAEQVRE...KLGKIDY	.DAMVWIE	310	
BAT99160.1	.TLPKDC	.TSVQCYIE	.LAEQVRE...KLGKIDY	.DAMVWIE	340	
AGV54358.1	.TLPKDC	.TSVQCYIE	.LAEQVRE...KLGKIDY	.DAMVWIE	340	
BAF16057.1	.KLSSTS	.VTVEDCVKEL	.TSIVKE...KLGKIDY	.DAMEWTK	337	
CAA77234.1	.KLSSTS	.VTVEDCVKEL	.TSIVKE...KLGKIDY	.DAMEWTK	337	
ACF86668.1	.KLSRTA	.VTVEDCVKEL	.AGIVRE...KLGKIDY	.DAMVWNN	339	
ACG43402.1	.KLSRTA	.VTVEDCVKEL	.AGIVRE...KLGKIDY	.DAMVWNN	339	
AKZ17611.1	.KLSRTA	.VTVEDCVKEL	.AGIVRE...KLGKIDY	.DAMVWNN	339	
BAJ88947.1	.KLSRTA	.VTVEDCVKEL	.AGIVRE...KLGKIDY	.DAMEWTK	338	
SPT20324.1	.KLSRTA	.VTVEDCVKEL	.AGIVRE...KLGKIDY	.DAMEWTK	338	
CAA77236.1	.KLSRTA	.VTVEDCVKEL	.AGIVRE...KLGKIDY	.DAMEWTK	338	
CAN80500.1	.RLSQAA	.VTTEDCVL	.ETVALVE...RLATLDPY	.QAMADWK	496	
ABD28560.1	.KLPQSA	.TTAEDCVI	.EMAKSVKE...RLGKVDY	.DAMVWVK	339	
AAM66046.1	.KLPETA	.LKVVEDCVI	.EMAKSVKE...QLGSDPA	.DAMVWVQ	339	
VDD33573.1	.KLPESA	.VNVEDCVV	.EMAKSVKE...QLGSDPA	.DAMVWVQ	339	
VDD19317.1	.KLPESA	.VNVEDCVV	.EMAKSVKE...QLGSDPA	.DAMVWVQ	339	
AJA92657.1	.TLET	.NDYTSQFL	.ETADWLK...TSKNNNSLKF	.ESYGGWK	327	
AOV94704.1	.PDQA	.EDYFEAYE	.EMIKAVDN...FDFSADYANADF	.KHMKML	371	
CAJ52658.1	.SADA	.TTWTEAATAMAT	.ALSE...GDFERLTNGAF	.EYWLWLC	369	
CCC40659.1	.SADA	.TTWTEAATAMAT	.ALSE...GDFERLTNGAF	.EYWLWLC	369	
AEN04839.1	.GAGA	.ESFREAFDAMAD	.ALVA...GDFEENNGAF	.EYKDWLD	367	
AZH26594.1	.GSDA	.ETIYAGVFA	.AMADALVD...AEADYRNGDF	.EYKDWLD	367	
AXG07954.1	.GADA	.DTIYAGVFE	.AMADALD...AEADYRNGDF	.EYKDWLD	367	
AXG11367.1	.GADA	.DTIYAGVFE	.AMADALD...AEADYRNGDF	.EYKDWLD	367	
AUV82097.1	.GAGS	.ETIYAEAF	.RAMADRLA...GDFSDLNNGAF	.EYKDWLD	368	
AWB26477.1	.GSEA	.DDYASVAR	.ADRLEA...ADSDAYRNGDF	.EYKDWLD	378	
AQL44377.1	.GDDA	.DSYAGVFA	.AMADAMA...GDFD.YENAAF	.EYKDWLD	367	
AGN01787.1	.EPAAISEG	.SIDRDA...AAVPSPE	.SFAAVFEAMGHE	.LAT...GDYSQRWNG	.EYKDWLD	385
ADQ67080.1	.GSDA	.TTWTEA	.EAMADALAD...GDFAKWNG	.GAFLNHCG...EFWRDLA	369	
AUG47369.1	.GADA	.DSYAEV	.FDIAVAMAD...GDFS DWENG	.GAFLNHCG...EFWRDLA	368	
AAV45881.1	.GADA	.DSYAEV	.FDIAVAMAD...GDFS DWENG	.GAFLNHCG...EFWRDLA	368	
AEM57147.1	.GADA	.DSYAEV	.FDIAVAMAD...GDFS DWENG	.GAFLNHCG...EFWRDLA	368	
AHB65933.1	.GADA	.DSYAEV	.FDIAVAMAD...GDFS DWENG	.GAFLNHCG...EFWRDLA	368	
AJF27072.1	.GADA	.DSYAEV	.FDIAVAMAD...GDFS DWENG	.GAFLNHCG...EFWRDLA	368	
ACV48390.1	.GDDA	.DSYAGV	.FAMARALA...GDFDDWENG	.GAFLNHCG...EYKDWLD	365	
ADJ15312.1	.DPDA	.GSIYAEV	.YAMGRRLE...SEWDSYRNG	.GDFLNHCG...EYKDWLD	368	
CCQ37667.1	.EPDVDE	.SEDA...DRYAAV	.FEAMARLA...GFEAYRNG	.GDFLNHCG...EYKDWLD	385	
AFK19498.1	.ERTSSAHR	.MQSGDDA...DSYAAV	.FEAMADALAD...GDFS DYRNG	.GDFLNHCG...EYKDWLD	384	
AHZ21160.1	.ERTSSAHR	.MQSGDDA...DSYAAV	.FEAMADALAD...GDFS DYRNG	.GDFLNHCG...EYKDWLD	384	
ADE03063.1	.GGDA	.DSYAGV	.FEAMADALAD...GDFS DYRNG	.GDFLNHCG...EYKDWLD	369	
AKU07755.1	.GDDA	.DSYAGV	.FEAMADALAD...GDFS DYRNG	.GDFLNHCG...EYKDWLD	369	
ACM55766.1	.GADA	.DDYVAV	.YDAMADRLTD...SEFDEYRNG	.GAFLNHCG...EYKDWLD	379	
QAU13129.1	.GADA	.DSFEAA	.FAMADALAD...GDFS WNS	.GAFLNHCG...EYKDWLD	379	
AZQ13471.1	.GADA	.DSYAAV	.FDAMADALAD...GDFS WNS	.GAFLNHCG...EYKDWLD	379	
QAY18675.1	.GADA	.DSYAAV	.FDAMADALAD...GDFS WNS	.GAFLNHCG...EYKDWLD	379	
ATW88543.1	.DPDSDA	.DPYARIFA	.MAAEELAD...GDWSEYNG	.GDFLNHCG...EYKDWLD	371	
AGB17244.1	.GDDA	.DSYAEAF	.EAMGRELAR...GDWDEF	.TNGDFLTHV...EYKDWLD	371	
AEH36670.1	.GADA	.DSYADV	.FEAMARELVD...GDWSDYRNG	.GDFLNHCG...EYKDWLD	371	
APW97619.1	.EPEVPR	.QPAEPTEDDAGED	.ADSYADVFEAMARE	.LAD...GDWSEYNG	.GDFLNHCG...EYKDWLD	389
AF057429.1	.GDDA	.DSYAGV	.FEAMADELAD...GDWSEYNG	.GDFLNHCG...EYKDWLD	371	
AGB30672.1	.GSDA	.DSYAAV	.FEAMARELAD...GDWDDYNG	.GDFLNHCG...EYKDWLD	371	
ACV12047.1	.GDNA	.DSYAEV	.ARAVAEFQT...SADDEWEN	.ADFLAYCG...EYKDWLD	367	
CCQ33920.1	.GADA	.DSYAGV	.ARAVAEELRT...SADDEWEN	.ADFLAYCG...EYKDWLD	367	
AAP19356.1	.DPAT	.ETIYAGV	.AEVGRRLAD...GEYDSYNG	.GAFLNHCG...EYLLDWA	317	
CAP13627.1	.DPAT	.ETIYAGV	.AEVGRRLAD...GEYDSYNG	.GAFLNHCG...EYLLDWA	366	
AHG03719.1	.EVGEQS	.YAAVARAV	.GGERLAE...GDYEEYNG	.GAFLNHCG...EYLLDWD	366	
CQH54592.1	.EPDE	.DSYEA	.VARAVGERLVE...SDYEEYNG	.GAFLAECG...EYLLDWD	366	



 non-conserved
 $\geq 50\%$ conserved
 $\geq 70\%$ conserved