

Supplementary Material

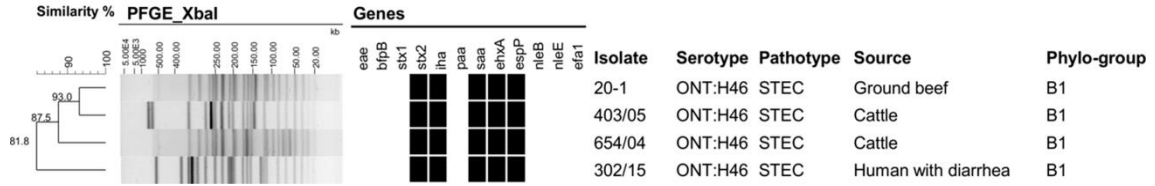


Fig. S1. Dendrogram showing the relationship among four STEC ONT:H46, isolated from ground beef, human or cattle. Additional information, such as: assignment of the STEC isolates in the distinct phylo-group, and occurrence of virulence factor-encoding genes (*eae*, *bfpB*, *stx1*, *stx2*, *iha*, *paa*, *saa*, *ehxA*, *espP*, *nleB*, *nleE* and *efa1/lifA*) are also described in this figure.