

1 **Fanconi anemia proteins counteract the implementation of the**  
2 **oncogene-induced senescence program**

3  
4 Anne HELBLING-LECLERC<sup>1,2,3</sup>, Françoise DESSARPS-FREICHEY<sup>1,2,3</sup>, Caroline  
5 EVRARD<sup>1,2,3</sup> and Filippo ROSSELLI<sup>1,2,3</sup>

6  
7 <sup>1</sup>UMR8200-CNRS, Gustave Roussy, Villejuif Cedex, France

8 <sup>2</sup>Université Paris-Sud, Université Paris-Saclay, Orsay, France

9 <sup>3</sup>Equipe labellisée "La Ligue Contre le Cancer".

10  
11  
12  
13  
14 **Correspondence:**

15 Anne Helbling-Leclerc and Filippo Rosselli, UMR 8200 - CNRS - Gustave Roussy,

16 PR2, 114 rue Edouard VAILLANT, 94805 VILLEJUIF Cedex;

17 phone: +33(0)41.11.51.16; fax:+33 (0)1.42.11.52.44

18 Email: [anne.helbling-leclerc@gustaveroussy.fr](mailto:anne.helbling-leclerc@gustaveroussy.fr) & [filippo.rosselli@gustaveroussy.fr](mailto:filippo.rosselli@gustaveroussy.fr)

19

20

21 **SUPPLEMENTAL DATA LEGENDS**

22

23 **S1A and S1B.** Example of cell cycle profiles obtained by FACS analysis of BrdU  
24 and PI stained IMR90\* and WI38\* cells.

25

26 **S2A.** Representative Western blots showing the time course expression of  
27 indicated protein in WI38\*-oncogene activated cells proficient or deficient in  
28 FANCD2.

29

30 **S2B.** Quantitative analysis of the expression of the proteins analyzed as in S2A.  
31 Bar represent the mean +/- SEM of at least 3 independent experiments. \*p<0.05.

32

33 **S2C.** Quantitative analysis of FANCD2 expression at the indicated time point in  
34 oncogene-activated WI38\* cells. Bars represent the mean +/- SEM of at least 3  
35 independent experiments. \*p< 0.05; \*\*p<0.01.

36

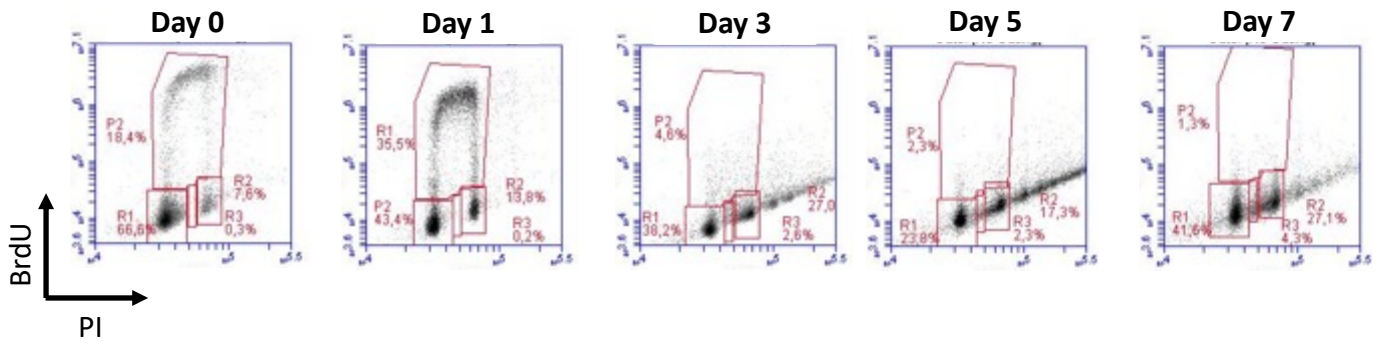
37 **S2D.** Graphics present the time course expression of each indicated proteins  
38 relative in presence or absence of FANCD2 in IMR90\* or WI38\*-oncogene  
39 activated cells. Each point is mean +/- SEM of at least 3 independent  
40 experiments.

41

42

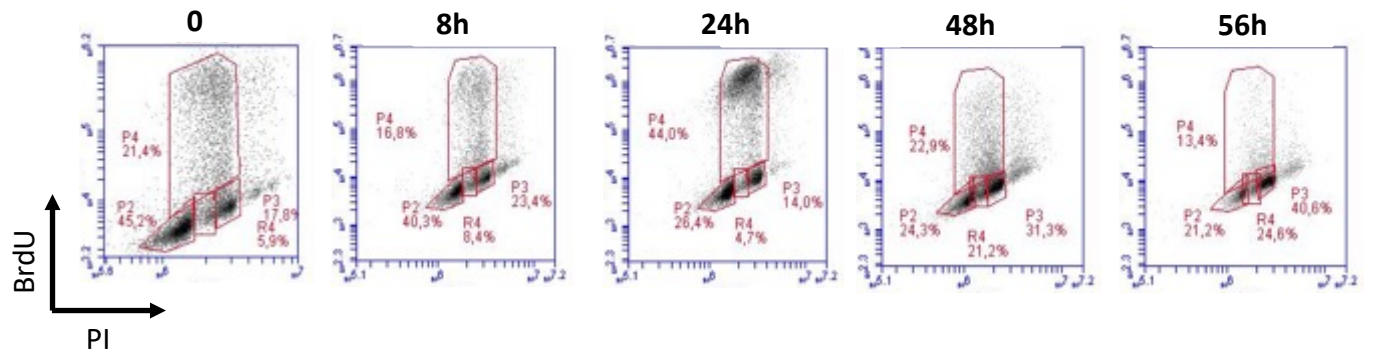
## S1A

IMR90\* cells



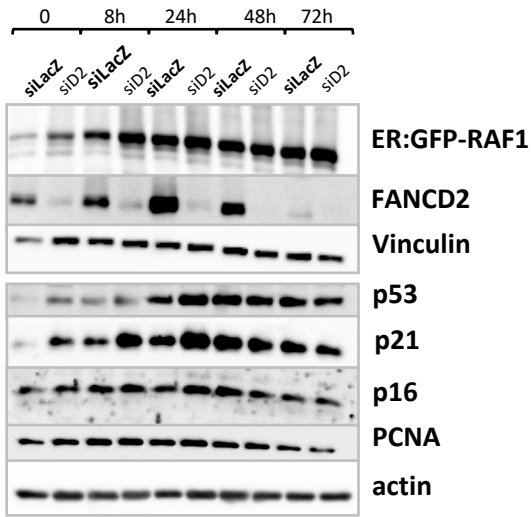
## S1B

WI38\* cells

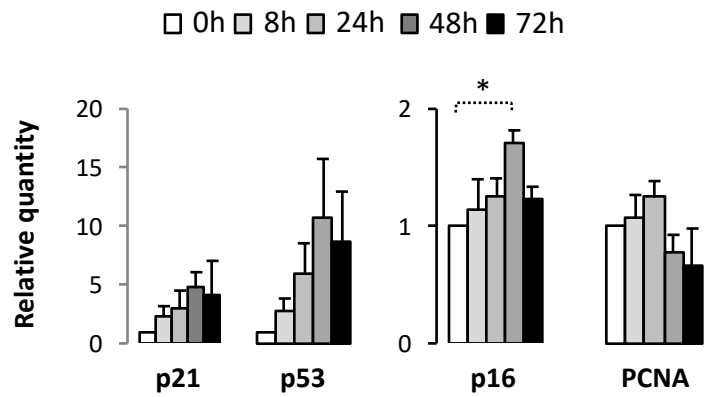


Supplemental Figure 1. Helbling-Leclerc et al.

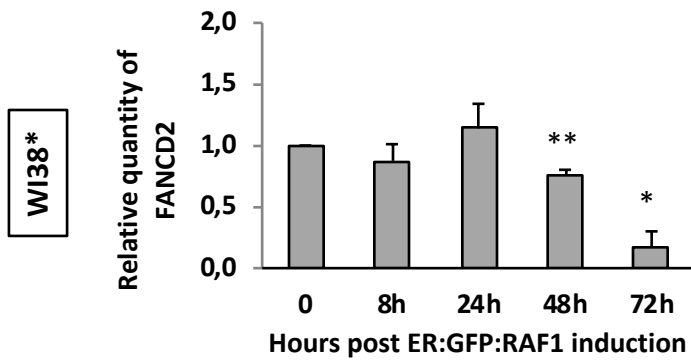
## S2A



## S2B



## S2C



## S2D

