

Supplementary Materials

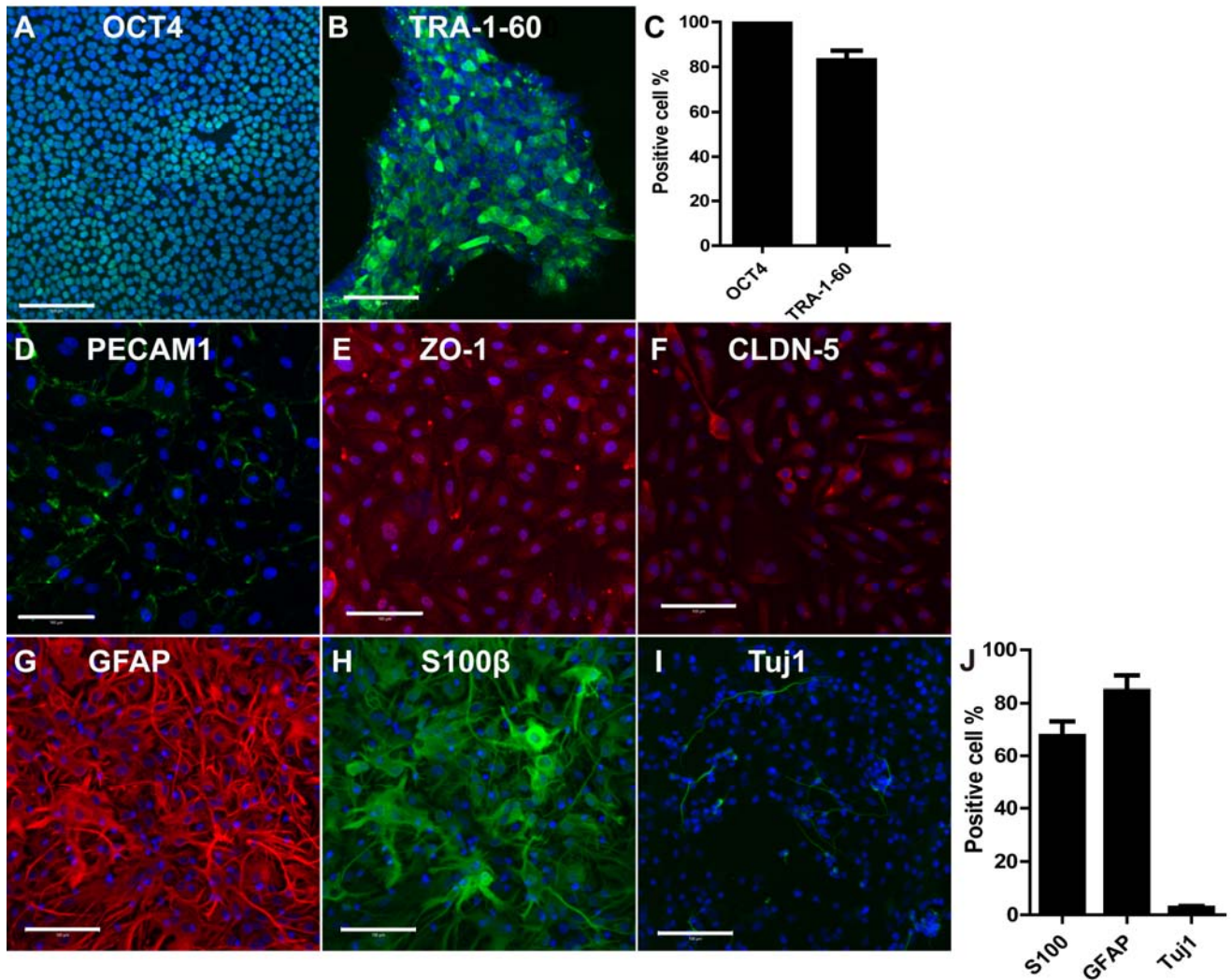


Fig. S1 Characterization of hiPSC, HBMEC and rat primary astroglial cells. Characterization of hiPSC line GM25256 - Panel A: OCT4 (green). B: TRA1-60 (green). C: Cellomic image analysis. Characterization of HBMEC - Panel D: PECAM1 (green). E: ZO-1 (red). F: claudin-5 (CLDN-5). Characterization of primary rat glial cells - Panel G: GFAP (red). H: S100 β (green). I: Tuj1 (green). J: Cellomic image analysis. DAPI (blue). Scale bar is 100 μ m.

Table S1 List of antibodies used in the study

Target Antigen	Vendor
ZO-1	Life Technologies
OCLN	Life Technologies
Claudin-5	Abcam
GLUT1 antibody	Abcam
von Willebrand factor (VWF) antibody	DAKO
FITC-conjugated Ulex Europaeus Agglutinin I	Vector labs
Transferrin Receptor	Abcam
IGFR1 antibody	Cell Signaling
Anti-LRP1 antibody	Abcam
CD98hc antibody	Santa Cruz Biotech
Pgp	Sigma-Aldrich
BCRP	Millipore
Multidrug resistance protein 1 (MRP1)	Millipore
Oct3/4	Santa Cruz Biotech
TRA1-60	Millipore
GFAP	DAKO
S100 β	Abcam
Tuj1	Millipore