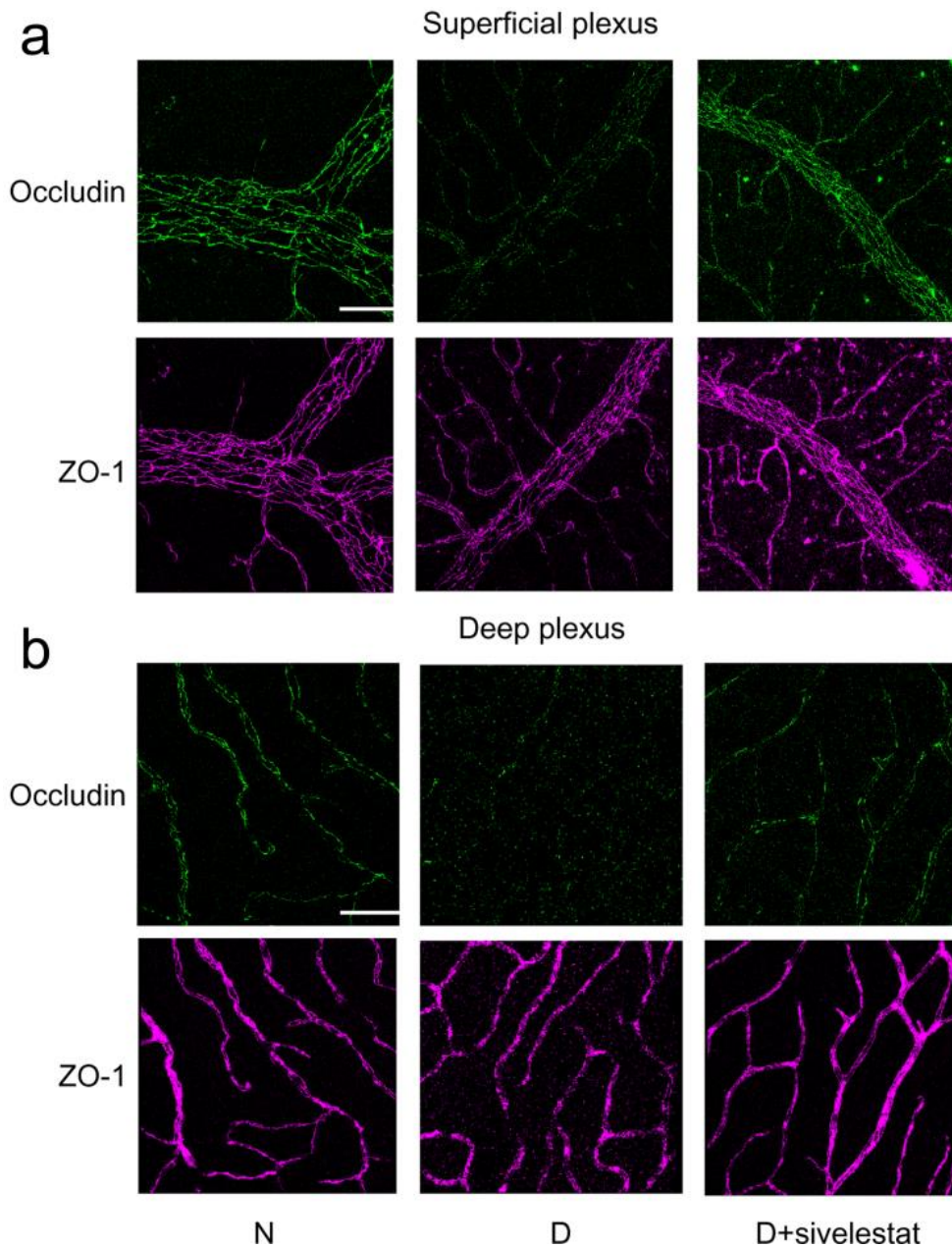


ESM Fig. 1



ESM Figure 1. Qualitative evaluation of tight junction proteins after inhibition of NE in diabetic mice

Retina whole mount samples collected from control, diabetic and sivelestat-treated mice were stained with occluding and ZO-1. Images were taken from retinal superficial (a) and deep plexus (b). High glucose exposure has a detrimental effect in the distribution of tight junction proteins at the blood-retinal barrier (a, b middle panels). Such negative effect is subtle or not seen in diabetic animals after administration of sivelestat (a, b right panels). Scale bar length: 60 μ m.