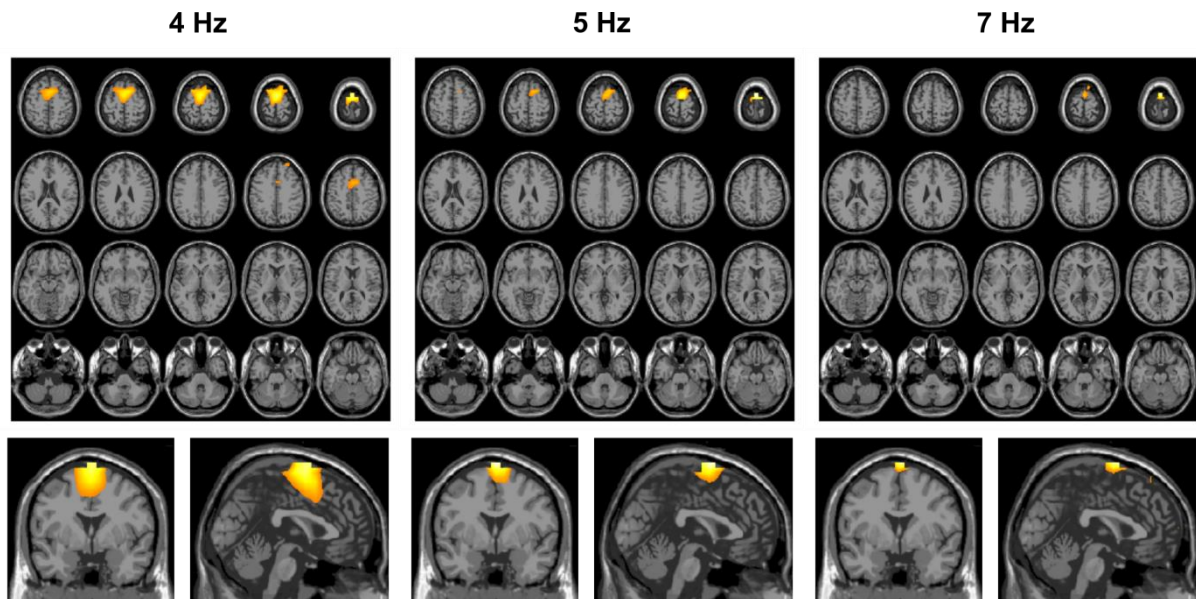
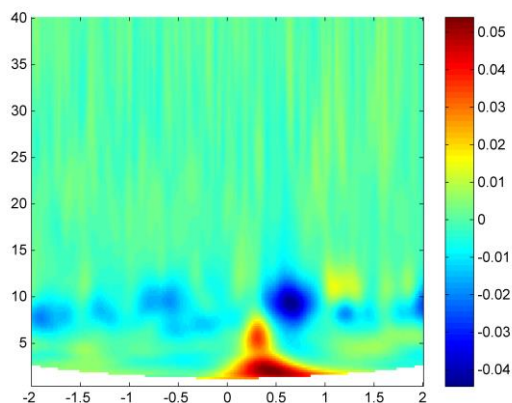


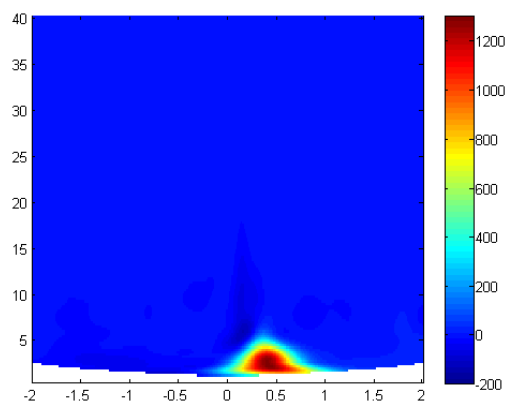
## Supplemental figures



Supplemental Figure A: Beamforming source localization results for non-decomposed time-locked EEG data, separately for 4, 5 and 7 Hz central frequency. The interval of 100-700 ms was compared against a baseline interval. At 4 Hz, significant source differences were found in the right and left Supplementary Motor Area (SMA; 0/1/80) as well as in the right dorsolateral superior frontal gyrus (SFG; peak MNI coordinates in mm: 24/51/40). At 5 Hz, the source differences were located in the left and right SFG (-10/-9/80) and the SMA (0/1/80). For 7 Hz, significant source differences were found in the right and left SMA (0/1/80).



Supplemental Figure B: Time frequency difference plot for NOGO minus GO trials. The power peak within the theta frequency band (4-7 Hz) is located at 5.25 Hz at 320 ms.



Supplemental Figure C: Time frequency difference plot for S-cluster minus C-cluster trials. The power peak within the theta frequency band (4-7 Hz) is located at 4 Hz at 391 ms.