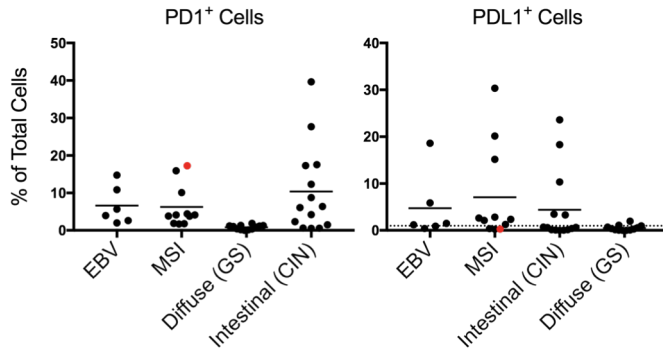
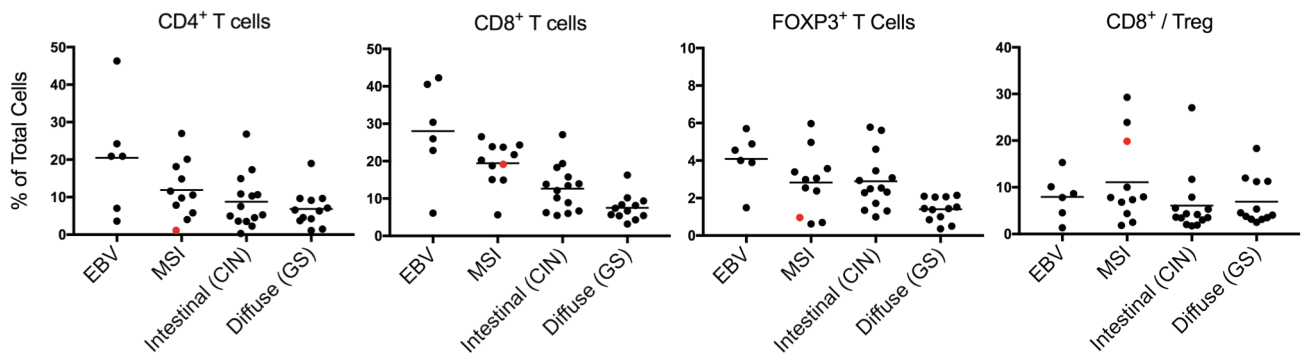


# Figure S1

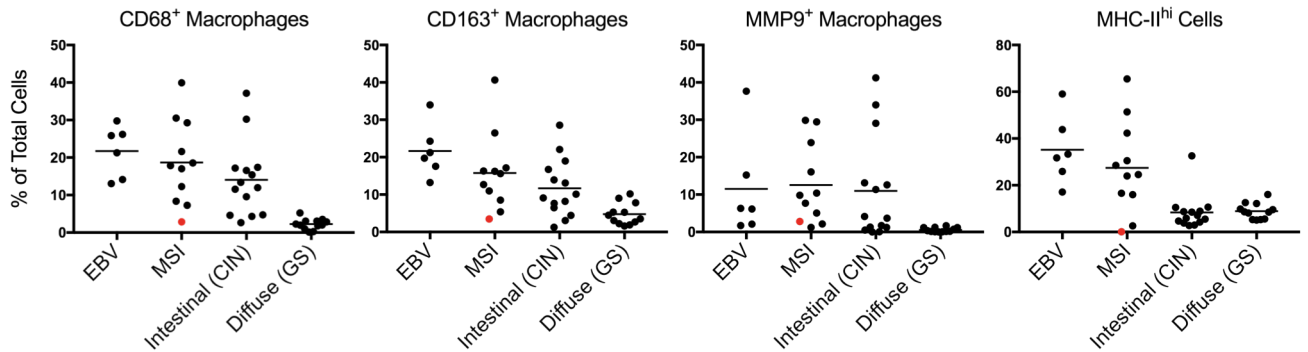
## A



## B



## C



**Supplemental Figure S1.** Intratumoral immune profile of a patient responding to anti-PD1 immune checkpoint inhibition. One of the 43 patients evaluated in the study cohort harbored an MSI tumor, which recurred in the peritoneum after curative intent resection, and was subsequently treated with anti-PD1 therapy. Intratumoral immune profile within the original tumor, in contrast to the other 42 patients' tumors, is depicted in red, with respect to PD1 and PDL1 expression (A), T cell infiltrate (B), and macrophage profile (C). Each data point represents a unique patient's tumor (N = 43, including 6 EBV, 11 MSI, 14 intestinal, and 12 diffuse gastric cancers). Bars represent the median.