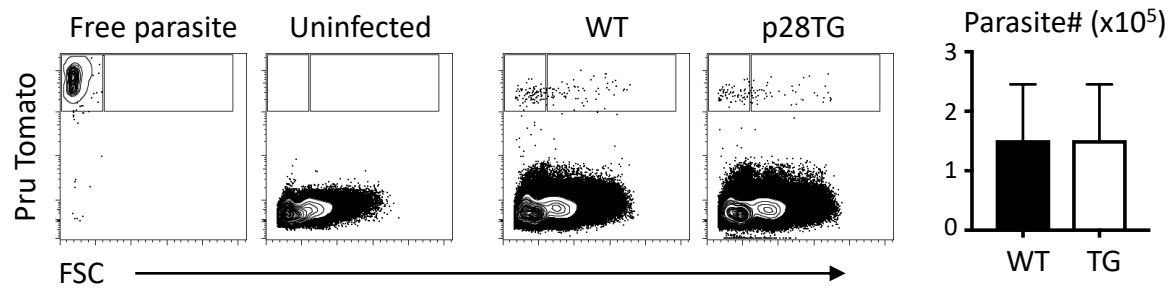
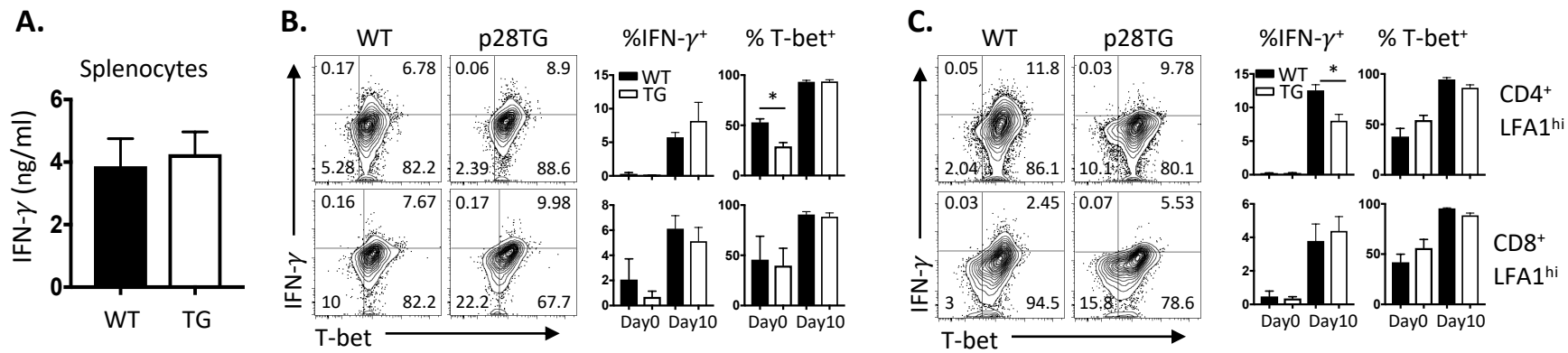


S.Fig. 1. Liver pathology and IFN- γ expression in IL-27p28^{-/-} mice. A. H&E stained section for liver histology. B. IFN-g expression measured by ELISA in circulation or by splenocytes stimulated with STAg. Representative and combined data collected (n=6-8, mean \pm SEM) from 2-3 independent experiments. *Significant differences between indicated groups (P<0.05).



S.Fig. 2. Parasite burden in blood during acute infection. WT and IL-27p28TG mice were infected i.p. with 1×10^5 tachyzoites of the Prugniaud strain of *T. gondii* that expresses tdTomato for 5 days. Parasite burden in the circulation was quantified by flow cytometry. Representative flow plots and combined data collected (mean \pm SEM, n=6) from 2 independent experiments are shown.



S.Fig. 3. Effector T cell activity in acute infection. A. Levels of IFN- γ produced by splenocytes without restimulation of infected WT and IL-27p28 transgenic mice at day 10 post infection. Levels of intracellular IFN- γ and T-bet was examined in T cells from the peritoneum (B) and spleen (C). Representative flow plots and collated data (mean \pm SEM, n=3-6) from 2 independent experiments.

		IgG (ug/ml)	IgA (ug/ml)	IgM (ug/ml)
Day0	WT	1288±631	98±9	203±104
	IL-27p28TG	696±602	47±19	142±91
Day10	WT	5249±2534	317±119	671±130
	IL-27p28TG	819±699	106±53	177±61
Day 30	WT	6264±2072	139±46	488±180
	IL-27p28TG	271±236	42±28	45±34

S.Table 1. Levels of total immunoglobulins in circulation. Concentrations of non-specific IgG, IgA and IgM in serum from 2 independent experiments were examined by ELISA (mean ± SEM, n=3~4).