

Supplementary Information

Identification of cell context-dependent YAP-associated proteins reveals β_1 and β_4 integrin mediate YAP translocation independently of cell spreading

Joanna Y. Lee¹⁺, Antonia A. Dominguez²⁻⁴, Sungmin Nam¹, Ryan S. Stowers¹, Lei S. Qi²⁻⁴, and
Ovijit Chaudhuri^{1*}

Affiliations:

¹Department of Mechanical Engineering, Stanford University, Stanford, CA 94305

²Department of Bioengineering, Stanford University, Stanford, CA 94305.

³Department of Chemical and Systems Biology, Stanford University, Stanford, CA 94305.

⁴Stanford ChEM-H, Stanford University, Stanford, CA 94305.

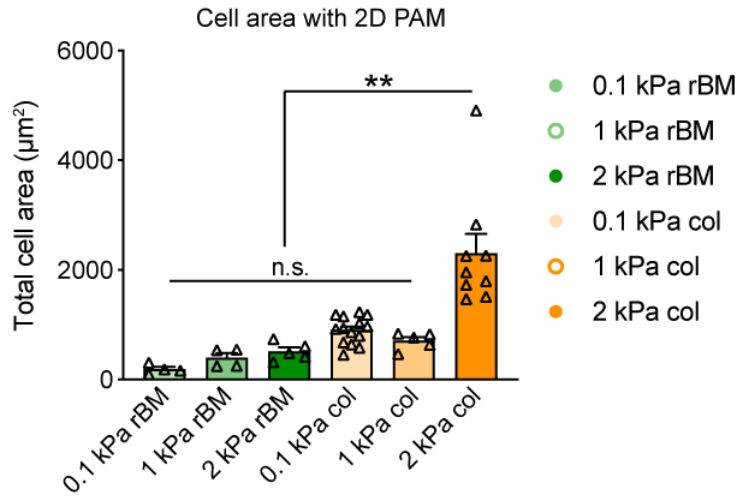
⁺Current affiliation: Department of Biochemical and Cellular Pharmacology, Genentech, South San Francisco, CA 94080

*Correspondence to: chaudhuri@stanford.edu

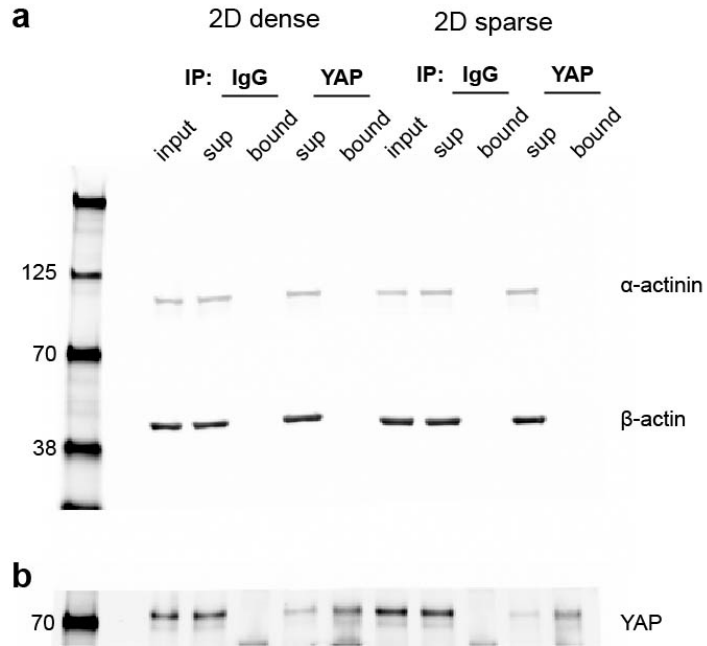
Includes:

Supplementary Figures 1–3

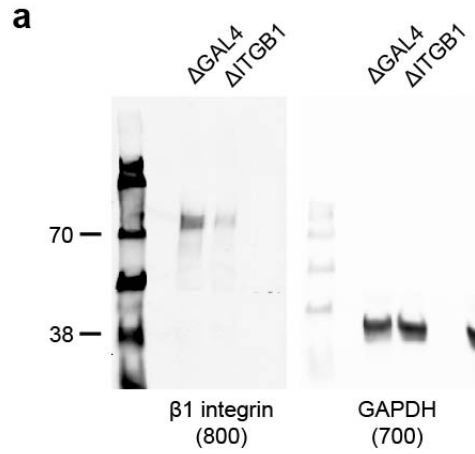
Supplementary Figures



Supplementary Figure 1. Cell area with 2D PAM conditions. Total cell area (i.e. nuclear + cytoplasmic) on 2D substrates, $**p < 0.0001$. Bars represent mean \pm SEM, symbols represent each cell, p-values from one-way ANOVA followed by Tukey post-hoc comparison tests.



Supplementary Figure 2. Uncropped Western blots from co-IP. (a) α -actinin and β -actin blots. **(b)** Blot from (a) stripped and re-probed for YAP.



Supplementary Figure 3.
Uncropped Western blots from
KOs. (a) Lower exposure β ₁ integrin
and GAPDH blots. **(b)** Higher
exposure β ₄ integrin and GAPDH
blots.

