

---

CONCORDANCE OF WHITE MATTER  
AND GRAY MATTER ABNORMALITIES  
IN AUTISM SPECTRUM DISORDERS

---

SUPPORTING ONLINE MATERIALS

---

## SUPPLEMENTARY FIGURES AND TABLES

**FIG S1** FLOWCHART OF INCLUDED STUDIES

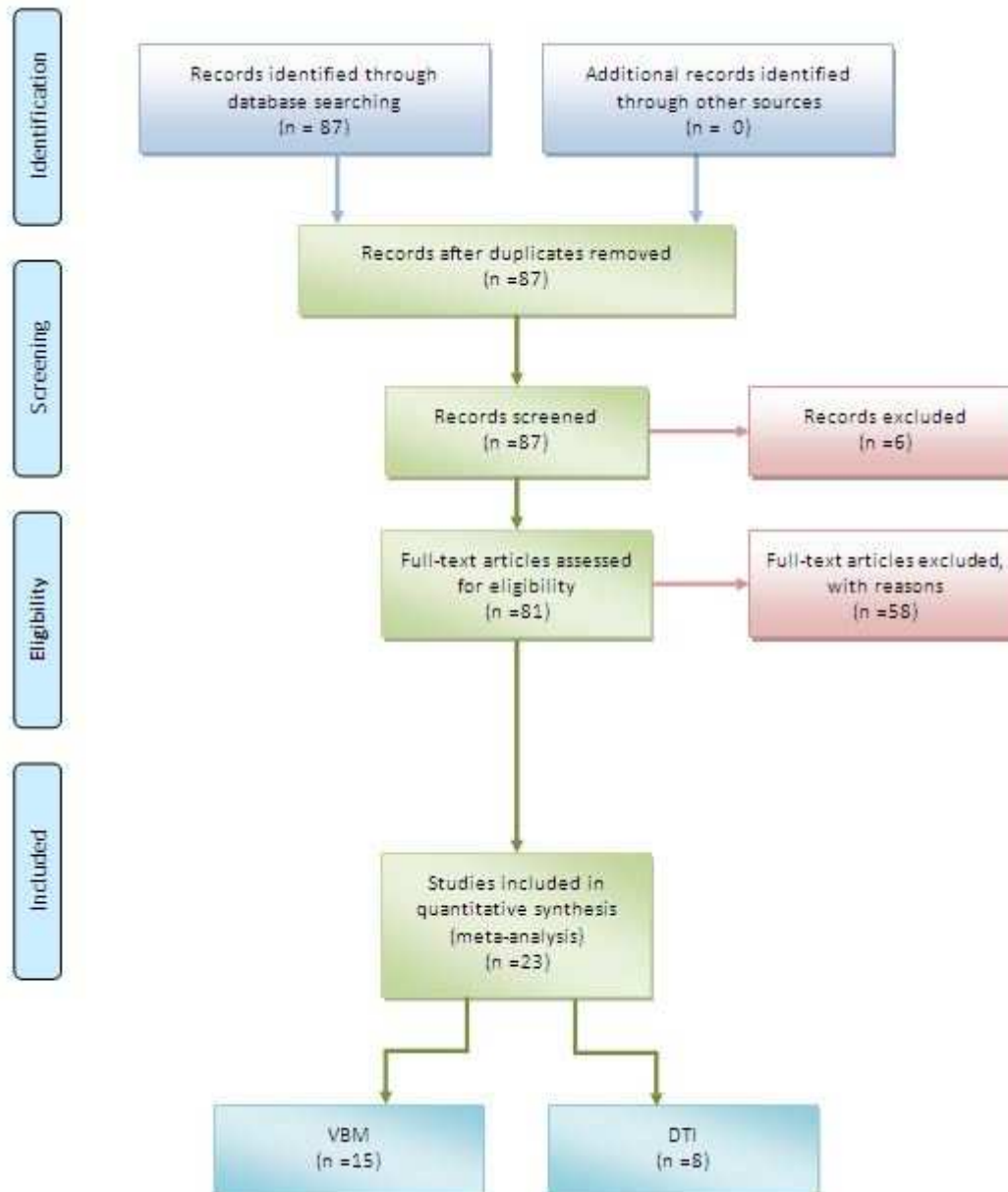
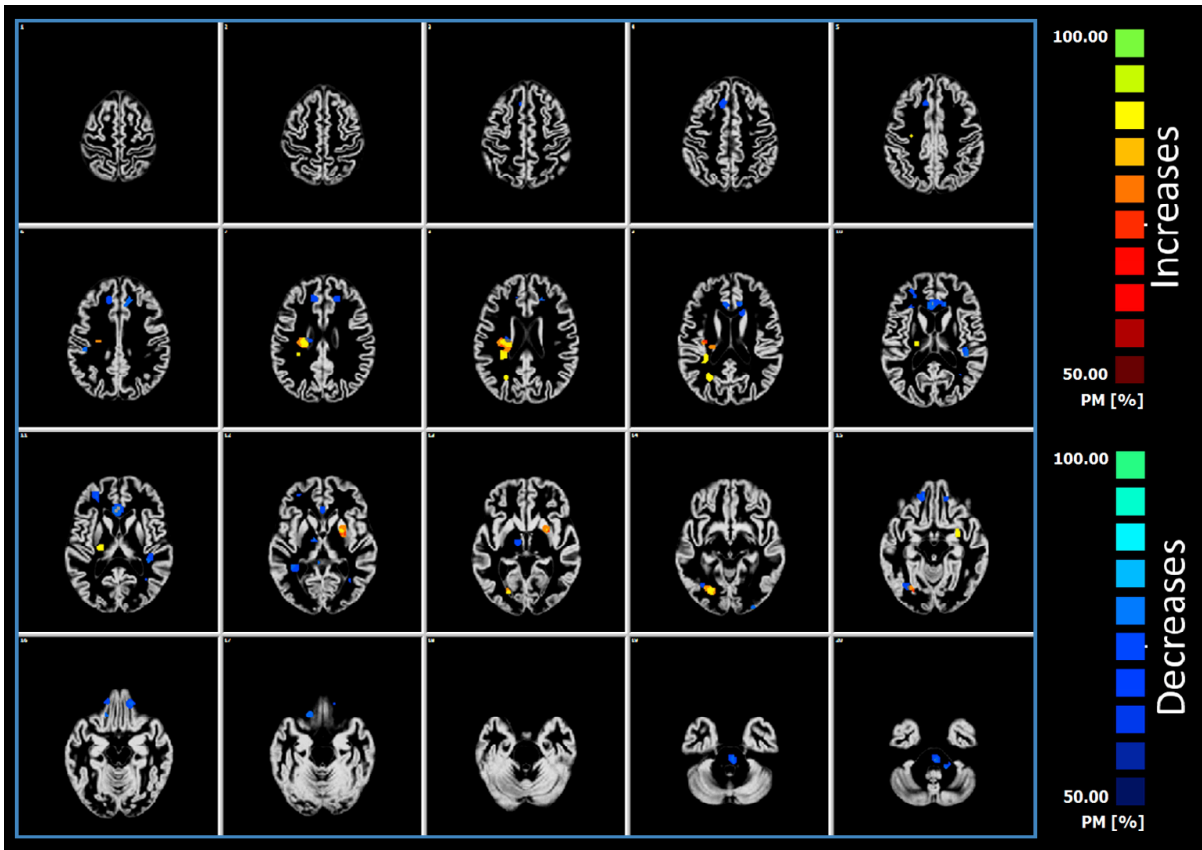


FIG S2: JACKKNIFE ANALYSIS RESULTS



THE FIGURE SHOW A PROBABILITY MAPS WERE A HIGH PROBABILITY MEANS THAT A CERTAIN AREA IS LEAD BY THE MAJORITY OF THE EXPERIMENTS INCLUDED. BY CONTRARY A LOW PROBABILITY MEANS THAT A CERTAIN AREA IS LEAD BY FEW EXPERIMENTS, THUS INDICATING THAT THE INTERPRETATION OF THIS POINT HAVE TO BE CAUTIOUS. BLUE COLORS INDICATE WM DECREASES RESULTS; RED COLORS INDICATES WM INCREASES RESULTS.

**TAB. S1** ALE WHITE MATTER RESULTS

**WHITE MATTER INCREASE**

Cluster	Area	Voxel	x	y	z	ALE P value
1	Right Superior Corona Radiata	3649	24	-18	30	20.00
2	Right MIDDLE FRONTAL WM	16	32	21	30	2.57
3	Right Posterior Thalamic Radiation	995	27	-72	-3	16.07
4	Right Posterior Corona Radiata	455	27	-60	21	15.05
5	Right Posterior Limb of Internal Capsule <sup>1</sup>	603	24	-18	12	17.61
6	Right Cingulum	16	14	-3	36	2.70
7	Right Genu of Corpus Callosum	22	14	27	0	5.08
8	Left Middle Cerebellar Peduncle	16	-16	-39	-36	2.70
9	Left External Capsule	963	-24	6	3	17.87
10	Left Sagittal Stratum <sup>2</sup>	278	-31	0	-9	12.44
11	Left Retrolenticular part of Internal Capsule	16	-30	-27	-2	2.57
12	Left MIDDLE FRONTAL WM	22	-31	45	0	10.16
13	Left INFERIOR FRONTAL WM	59	-44	12	18	5.08

**WHITE MATTER DECREASE**

Cluster	Area	Voxel	x	y	z	Ale P value
1	Right SLF	147	42	-24	36	9.82
2	Right Posterior Thalamic Radiation	575	36	-42	6	14.89
3	Right Sagittal Striatum	523	36	-66	-9	14.06
4	Right MIDDLE FRONTAL GYRUS WM	864	30	48	12	16.66
5	Right INFERIOR FRONTAL WM	123	30	27	15	10.23
6	Right Superior Corona Radiata	482	27	-12	27	10.22
7	Right Middle Cerebella Peduncle	91	24	-42	-33	10.55
8	Right Anterior Corona Radiata	456	18	45	-12	12.74
9	Right MIDDLE FRONTO-ORBITAL WM	492	18	30	-18	12.67
10	Right SUPERIOR FRONTAL WM	685	12	24	45	12.02
11	Right SUPERIOR FRONTAL WM	602	12	36	33	11.88
12	Right POSTERIOR THALAMIC RADIATION	497	12	-9	3	12.62
13	Bilateral Cingulum	2666	3	30	12	20.00
14	Right Splenium of Corpus Callosum	110	6	-36	9	10.77
15	Left PONS	897	-3	-27	-30	18.26
16	Left SUPERIOR FRONTAL WM	675	-18	36	30	10.78
17	Left Anterior Corona Radiata	741	-12	45	-15	17.77
18	Left Genu of Corpus Callosum	183	-15	21	21	10.59
19	Left Middle Cerebellar Peduncle	224	-15	-33	-33	10.54
20	Left SUPERIOR PARIETAL WM	51	-16	-72	42	4.59
21	Left Posterior Limb of Internal Capsule	64	-18	-15	0	9.13

*Follow on next page*

<sup>1</sup> include Right External Capsule

<sup>2</sup> include Inferior longitudinal fasciculum and Inferior Fronto-Occipital Fasciculus

22	Left MIDDLE OCCIPITAL GYRUS WM	169	-24	-93	-4	9.83
23	Left Posterior Thalamic Radiation	143	-29	-57	15	7.07
24	Left SLF	849	-39	-27	15	12.50