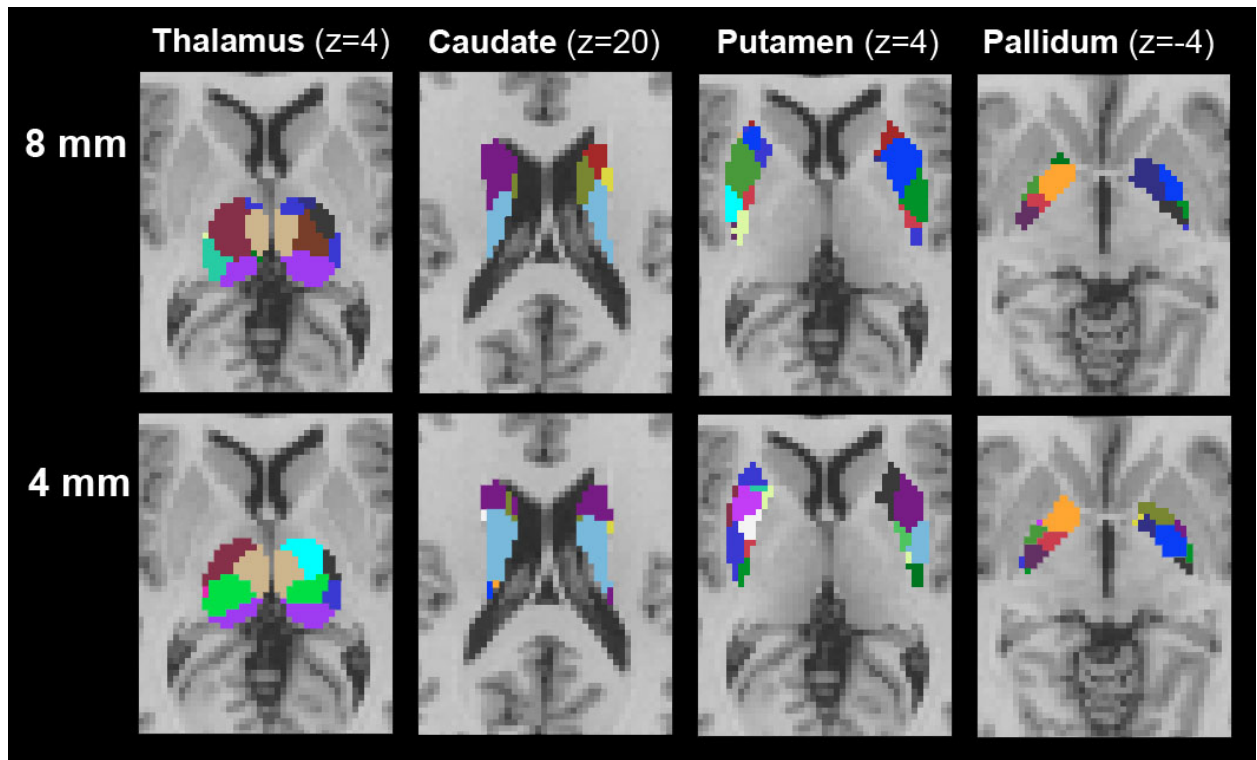
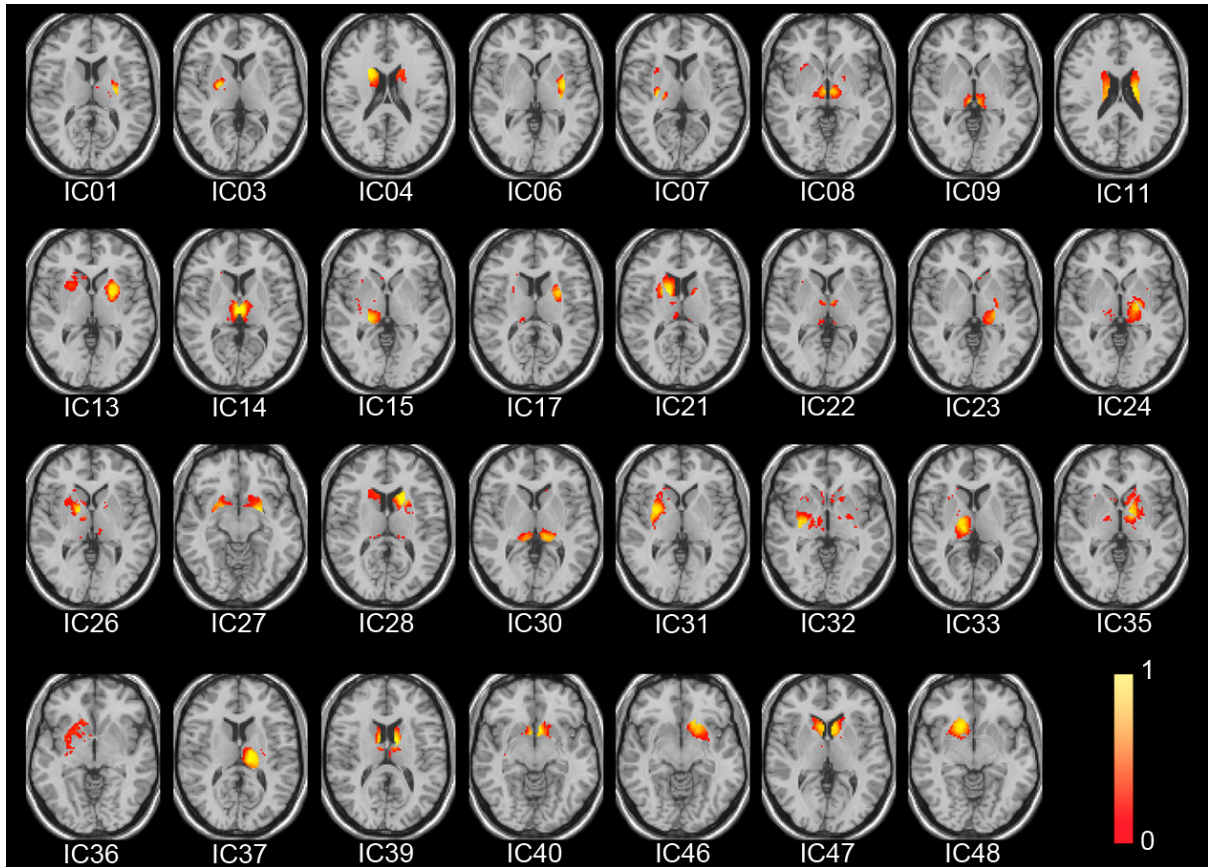


**Figure S1.** IC maps of non-thalamic and non-basal ganglia components derived from the 2<sup>nd</sup>-level ICA. These components were excluded in the analysis.



**Figure S2.** Effects of smoothing kernel size.



**Figure S3.** Statistical probability atlas maps of the overlap frequency across individual parcellations. 1 indicates 100 % overlap of each subdivision across subjects at the voxel.