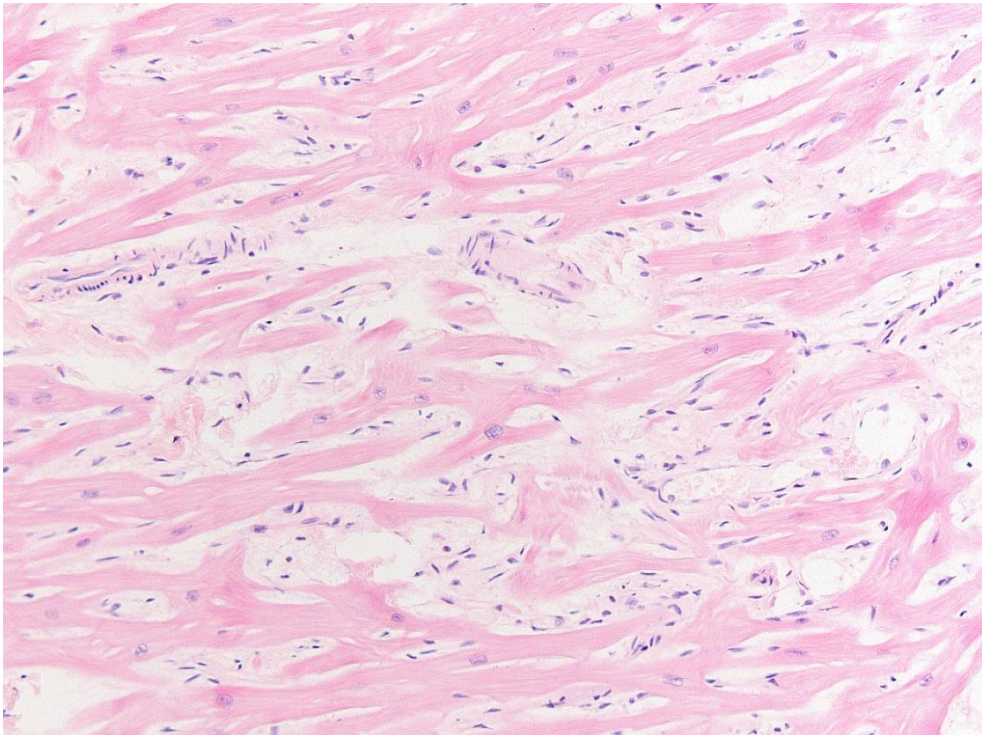
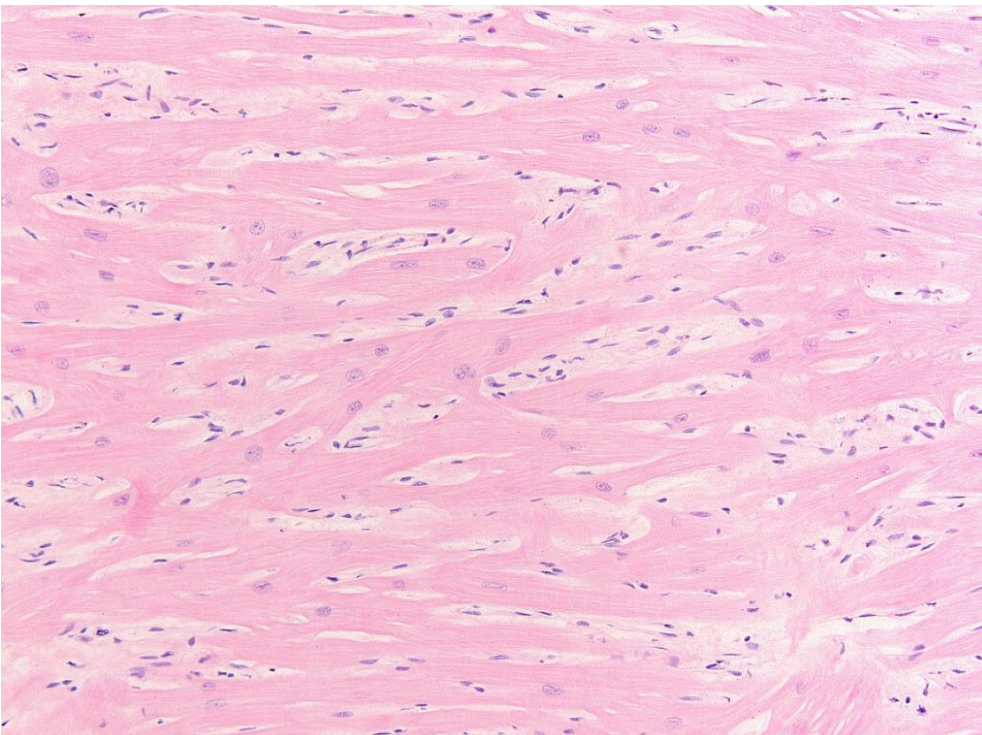


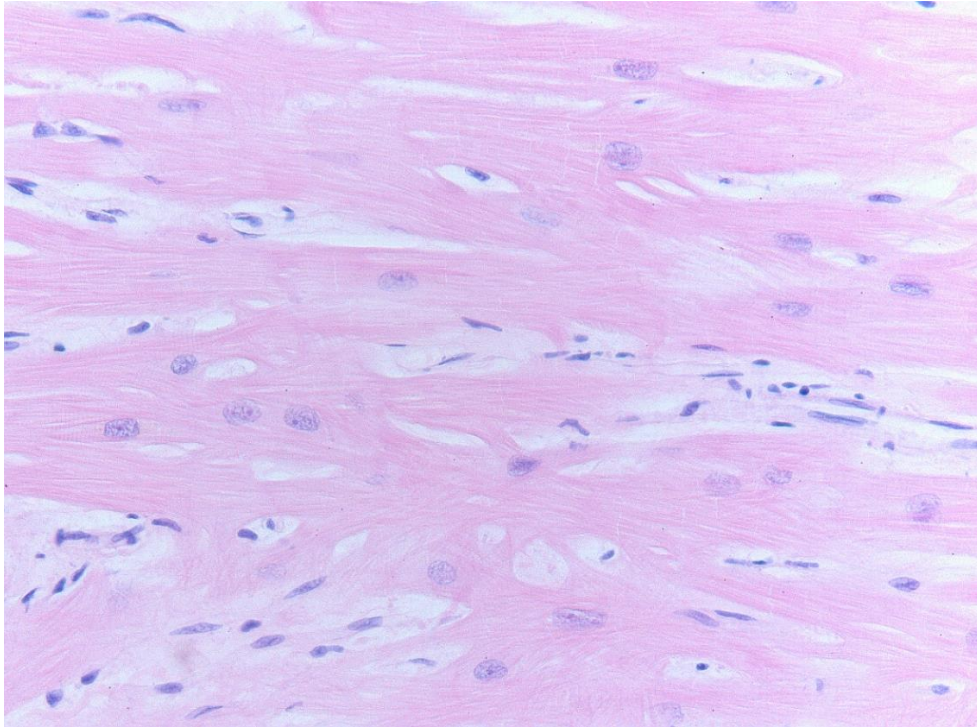
Supplementary Figures Histopathological images of the heart.



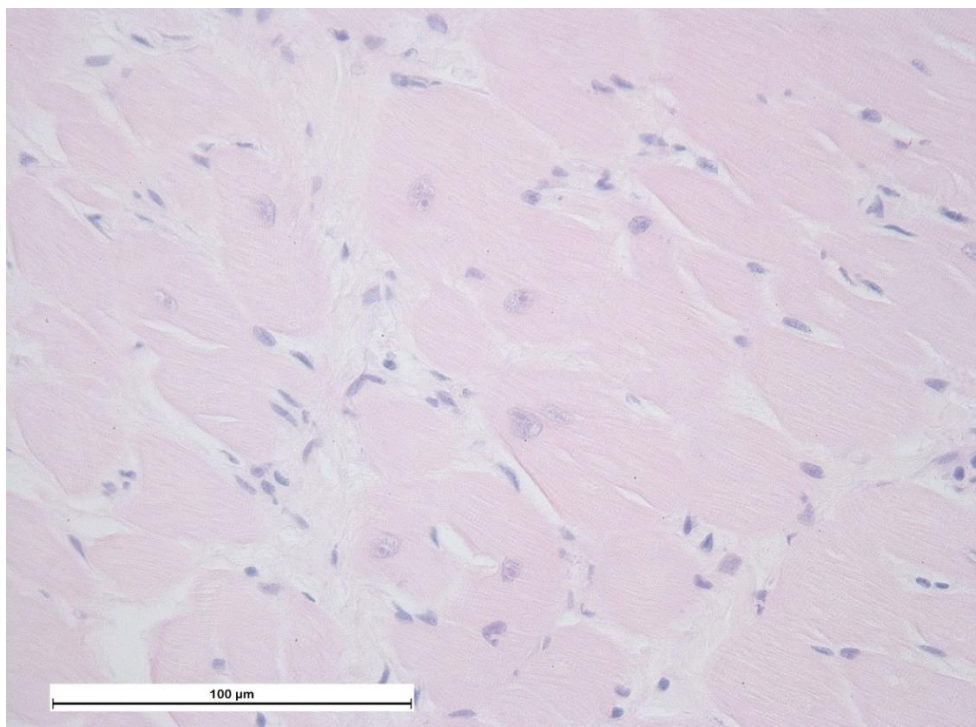
Supplementary Figure 1 The cardiomyocytes show a disorganised pattern (myofibre disarray) around foci of interstitial collagen (interstitial fibrosis) and some blood vessels. Some nuclei are swollen (karyomegaly). H&E, original magnification x200.



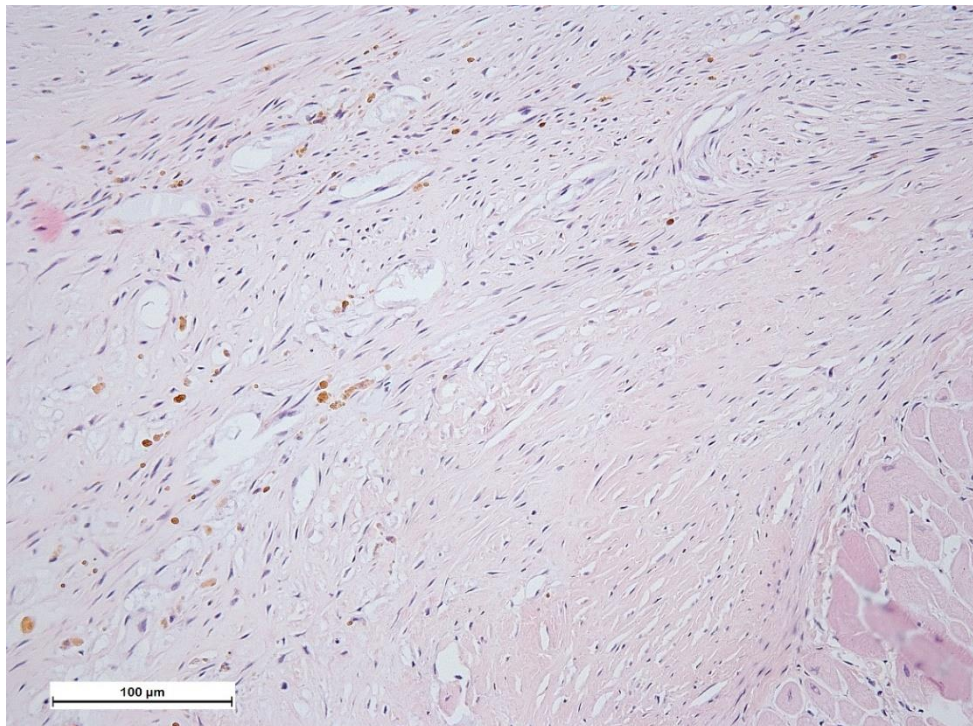
Supplementary Figure 2 Branching and myofibre disarray admixed with interstitial fibrosis and hypertrophic cardiomyocytes with karyomegaly. H&E, original magnification x200.



Supplementary Figure 3 The cardiomyocytes display branching, karyomegaly and a disorganised pattern. H&E, original magnification x400.



Supplementary Figure 4 Hypertrophic cardiomyocytes have diameters up to 67 µm (measured at the level of the nucleus). H&E, original magnification x400.



Supplementary Figure 5 The subendocardial region shows deposition of extracellular matrix (mainly collagen) admixed with neovascularisation, fibroblasts and large aggregates of hemosiderin-laden macrophages. There is a maturation to dense collagenous connective tissue in the proximity of the myocard. H&E, original magnification x200.