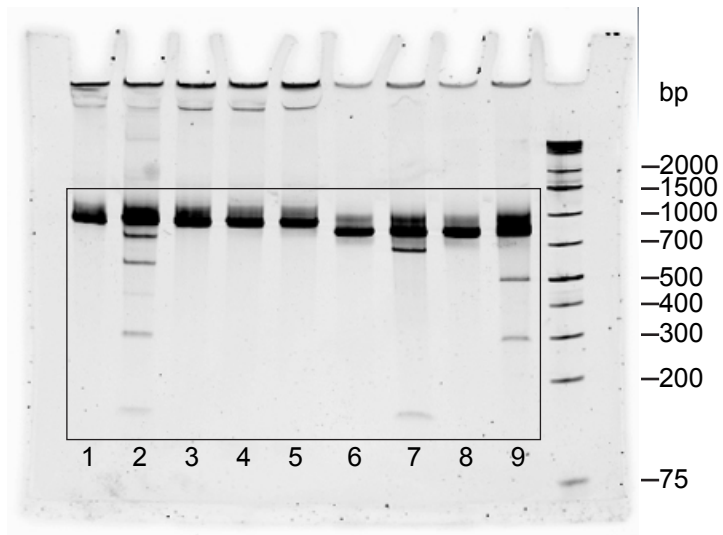
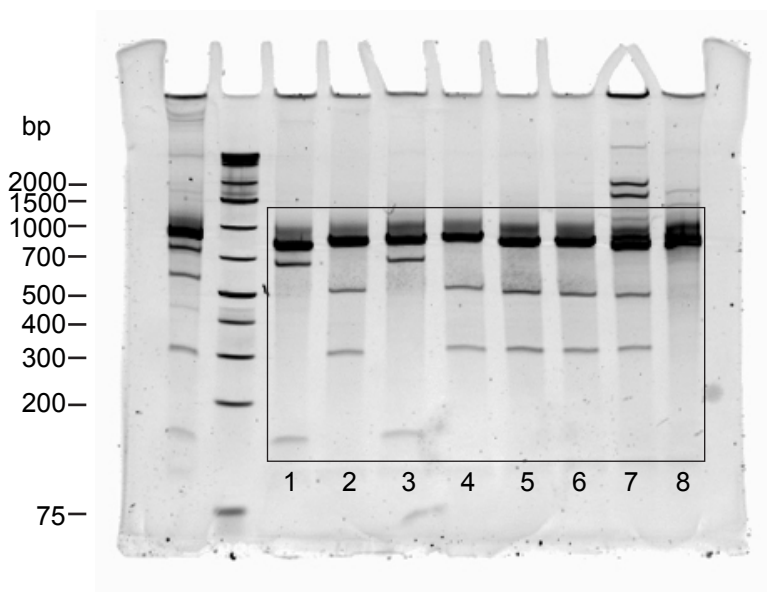


Supplementary Figure 1

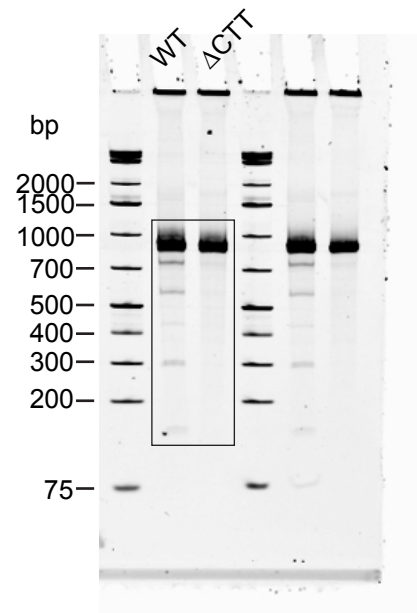
Extended Data Fig. 1d



Extended Data Fig. 1e



Extended Data Fig. 8c



Supplementary Table 1

The sequences of target site duplications (TSDs) generated by HzTransib mediated transposition

| Colony No. | TSD sequence | Colony No. | TSD sequence |
|------------|--------------|------------|--------------|
| 1 | CGGTG | 31 | CGATG |
| 2 | TGGGG | 32 | TGGCA |
| 3 | CGGCA | 33 | CACCG |
| 4 | AGCCG | 34 | CGCCG |
| 5 | CGATG | 35 | CGTAG |
| 6 | CGTCG | 36 | TGCCG |
| 7 | CGCCG | 37 | CGTCA |
| 8 | CATCG | 38 | CGACG |
| 9 | AGGCC | 39 | TAACG |
| 10 | CGAGG | 40 | CGCTA |
| 11 | CCTCG | 41 | CAACG |
| 12 | TGCCA | 42 | CACCC |
| 13 | GGCCG | 43 | CGACA |
| 14 | CGGCA | 44 | GGCCG |
| 15 | CGGCA | 45 | GGGTG |
| 16 | GGCCG | 46 | TGCCA |
| 17 | TGCCG | 47 | CAACG |
| 18 | TAGCA | 48 | CGGCT |
| 19 | TGTTG | 49 | CGTCA |
| 20 | CGCTA | 50 | CCACA |
| 21 | CGCCG | 51 | CGTCG |
| 22 | CGCCG | 52 | CGCCG |
| 23 | CGACG | 53 | CGACG |
| 24 | CGCCG | 54 | CGGGA |
| 25 | TGCCG | | |
| 26 | CAACG | | |
| 27 | CGCCG | | |
| 28 | TAACG | | |
| 29 | CGACG | | |
| 30 | GGGCG | | |