

Supplementary information for the manuscript "Behavioural and dopaminergic changes in double mutated human A30P\*A53T alpha-synuclein transgenic mouse model of Parkinson´s disease"

by Tommi Kilpeläinen, Ulrika H. Julku, Reinis Svarcbahs, Timo T. Myöhänen

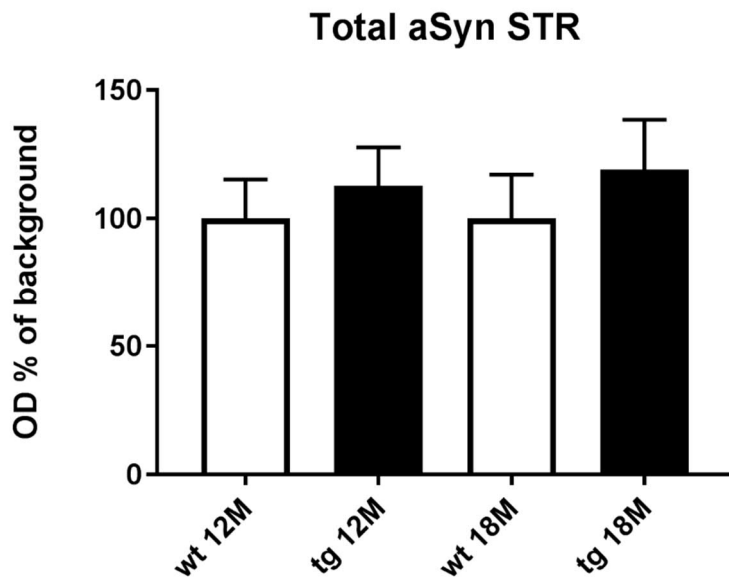


Figure S1. Total alpha-synuclein (aSyn) staining by using ab6162 (AbCam) from wild-type (wt) and transgenic (tg) mouse striatum did not reveal any statistical differences.

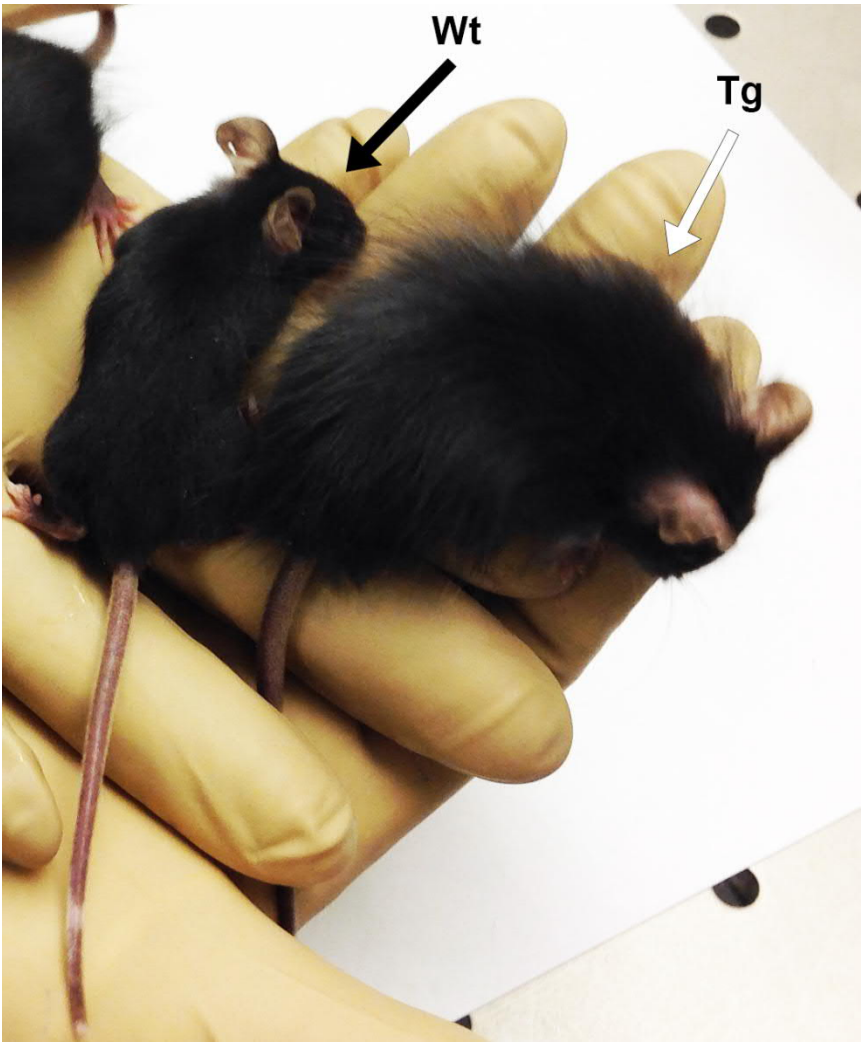


Figure S2. Homozygous A30P\*A53T transgenic mice showed long-haired phenotype that was not seen with wild-type C57Bl6/Rcchsd mouse.