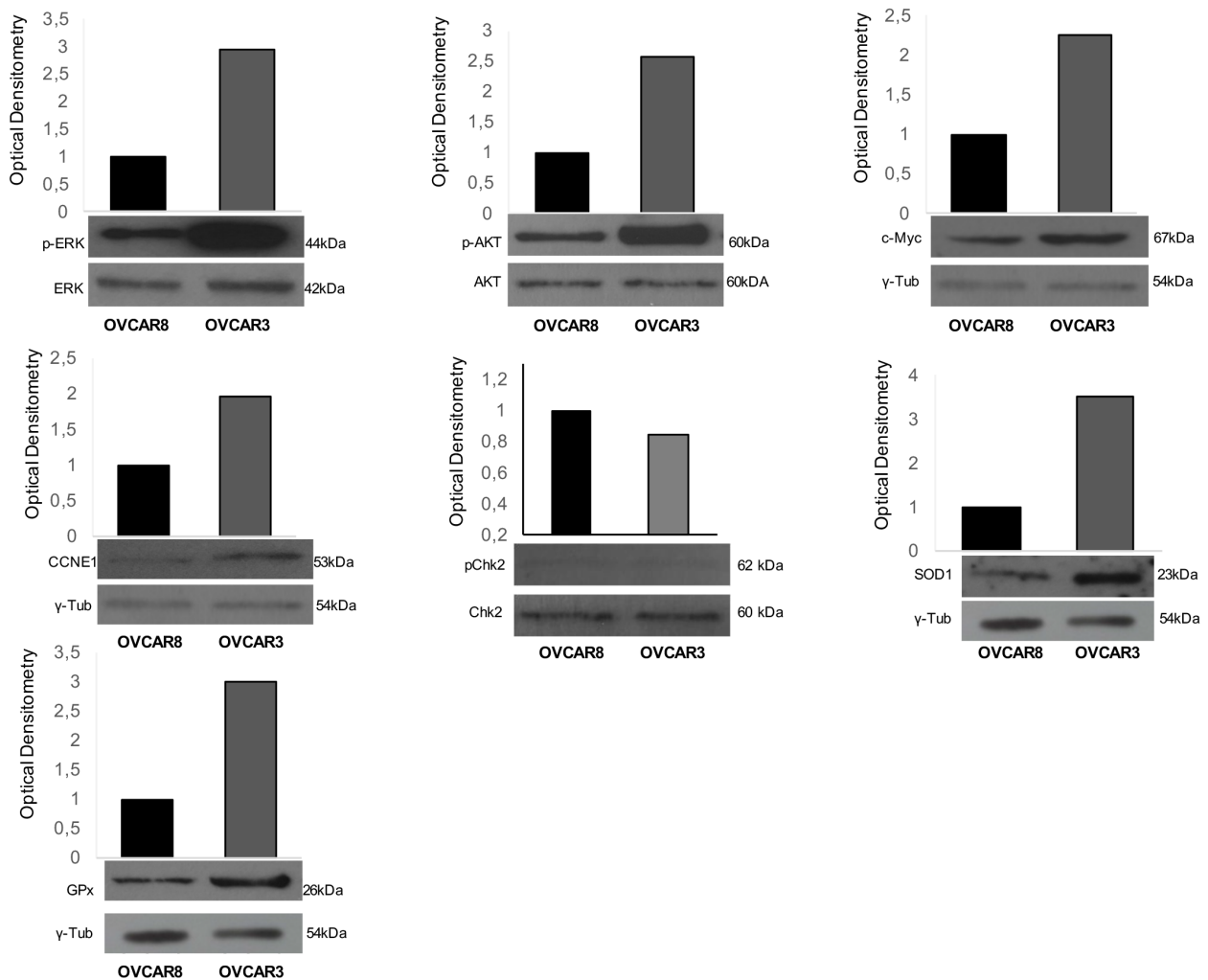


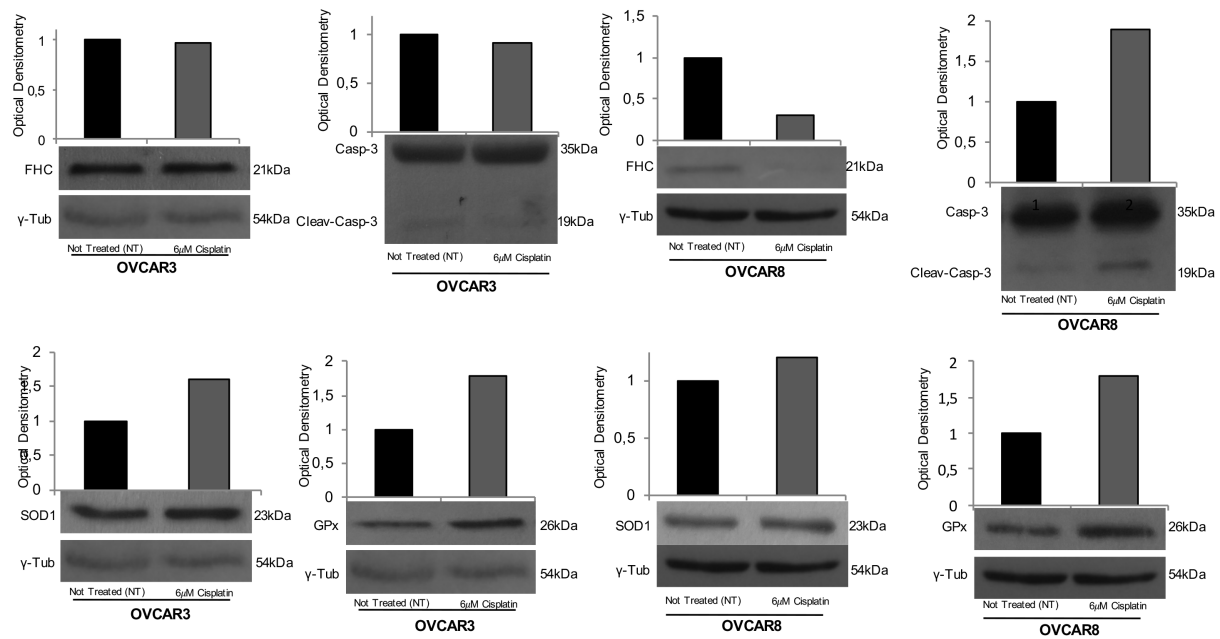
## Supplementary Materials

Figure S1



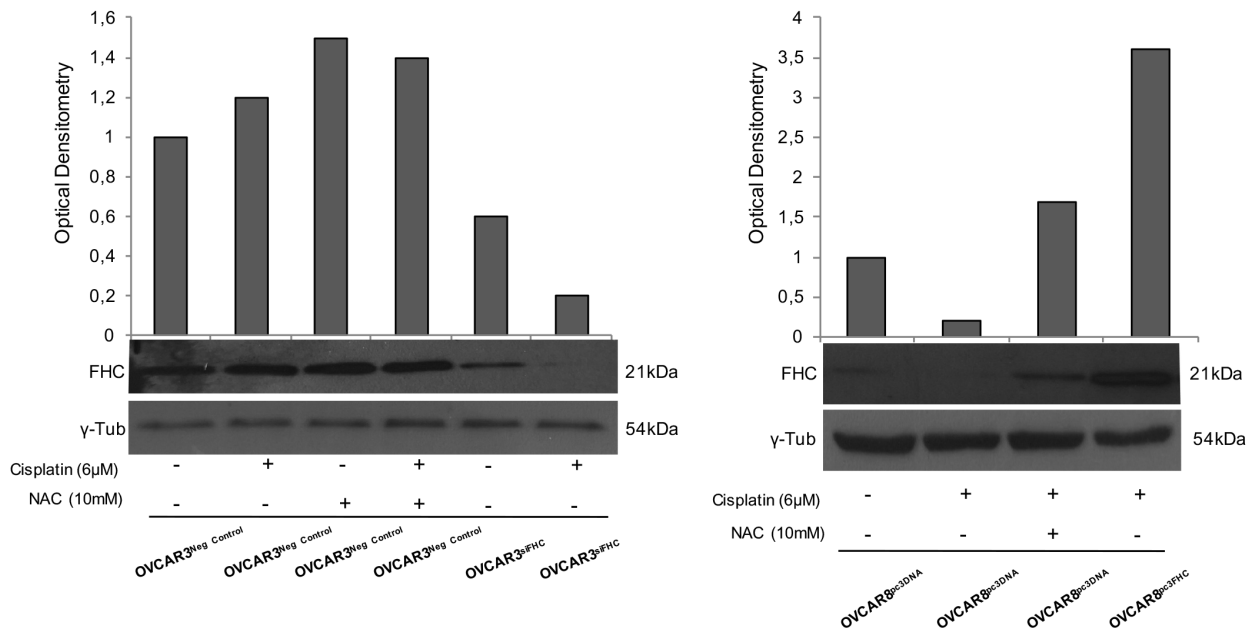
**Fig.S1** WB analysis of SOD1, GPx, CCNE1, c-Myc, ERK/pERK, AKT/pAKT and Chk2/pChk2 in OVCAR3 and OVCAR8 cells. Representative western blot of antioxidant proteins SOD1 and GPx, CCNE1, c-Myc together with ERK/AKT/Chk2 phosphorylation in OVCAR3 and OVCAR8 cells.  $\gamma$ -tubulin was used as internal control. Each plot has been quantified by using ImageJ software and optical densitometry is reported. WB analysis was performed three times and results were reproducible.

**Figure S2**



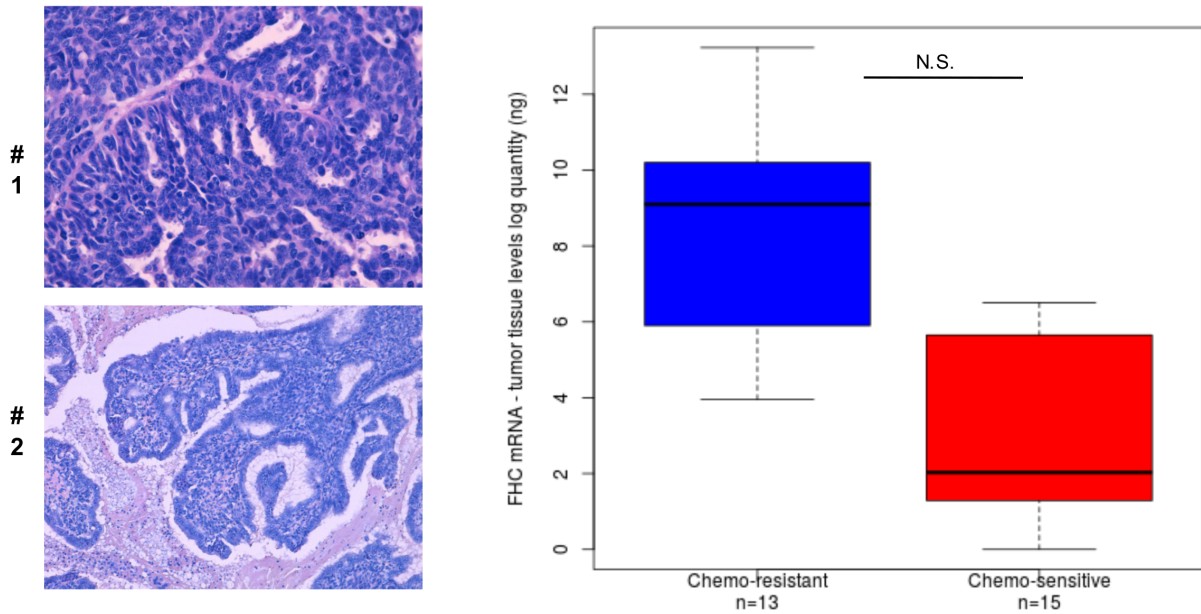
**Fig. S2 WB analysis of FHC, Caspase 3/cleaved Caspase 3, SOD1 and GPx in OVCAR3 and OVCAR8 cells untreated or treated with 6 $\mu$ M cisplatin.** Representative western blot of FHC, Caspase 3/cleaved Caspase 3, SOD1 and GPx in OVCAR3 and OVCAR8 cells untreated (NT) or treated with 6 $\mu$ M cisplatin.  $\gamma$ -tubulin was used as internal control. Each plot has been quantified by using ImageJ software and optical densitometry is reported. WB analysis was performed three times and results were reproducible.

**Figure S3**



**Fig. S3 WB analysis of FHC, Caspase 3/cleaved Caspase 3, SOD1 and GPx in OVCAR3 and OVCAR8 cells upon several treatments.** Representative western blot of FHC in OVCAR3<sup>Neg Control</sup>, OVCAR3<sup>Neg Control</sup> (6μM) cisplatin, OVCAR3<sup>Neg Control</sup> 10mM NAC, OVCAR3<sup>Neg Control</sup> (6μM) cisplatin/10mM NAC (6μM) cisplatin, OVCAR3<sup>siFHC</sup>, OVCAR3<sup>siFHC</sup> (6μM) cisplatin, OVCAR8<sup>pc3DNA</sup>, OVCAR8<sup>pc3DNA</sup> (6μM) cisplatin, OVCAR8<sup>pc3DNA</sup> (6μM) cisplatin/10mM NAC, OVCAR8<sup>pc3FHC</sup> (6μM) cisplatin.  $\gamma$ -tubulin was used as internal control. Each plot has been quantified by using ImageJ software and optical densitometry is reported. WB analysis was performed three times and results were reproducible.

**Figure S4**



**Fig. S4 Analysis of FHC tumor tissue levels in 28 HGSC patients.** Representative images of ovarian cancer tissues specimens (left). Box Plot depicting FHC mRNA levels, expressed as log (ng), as assessed by absolute qPCR analysis in cancer tissue specimens of chemo-resistant HGSC patients (n=13) and chemo-sensitive HGSC patients (n=15) (right). Data are not statistically significant (N.S.).