



Supporting Information

for *Small*, DOI: 10.1002/smll.201805182

Locally Trapping the C-C Chemokine Receptor Type 7 by
Gene Delivery Nanoparticle Inhibits Lymphatic Metastasis
Prior to Tumor Resection

*Sai An, Karthik Tiruthani, Ying Wang, Ligeng Xu, Mengying
Hu, Jingjing Li, Wantong Song, Hongnan Jiang, Jirui Sun,
Rihe Liu,* and Leaf Huang**

Supporting Information

Locally Trapping the C-C Chemokine Receptor Type 7 by Gene Delivery Nanoparticle Inhibits Lymphatic Metastasis Prior to Tumor Resection

Sai An, Karthik Tiruthani, Ying Wang, Ligeng Xu, Mengying Hu, Jingjing Li, Wantong Song, Hongnan Jiang, Jirui Sun, Rihe Liu* and Leaf Huang*

Supplementary Figures

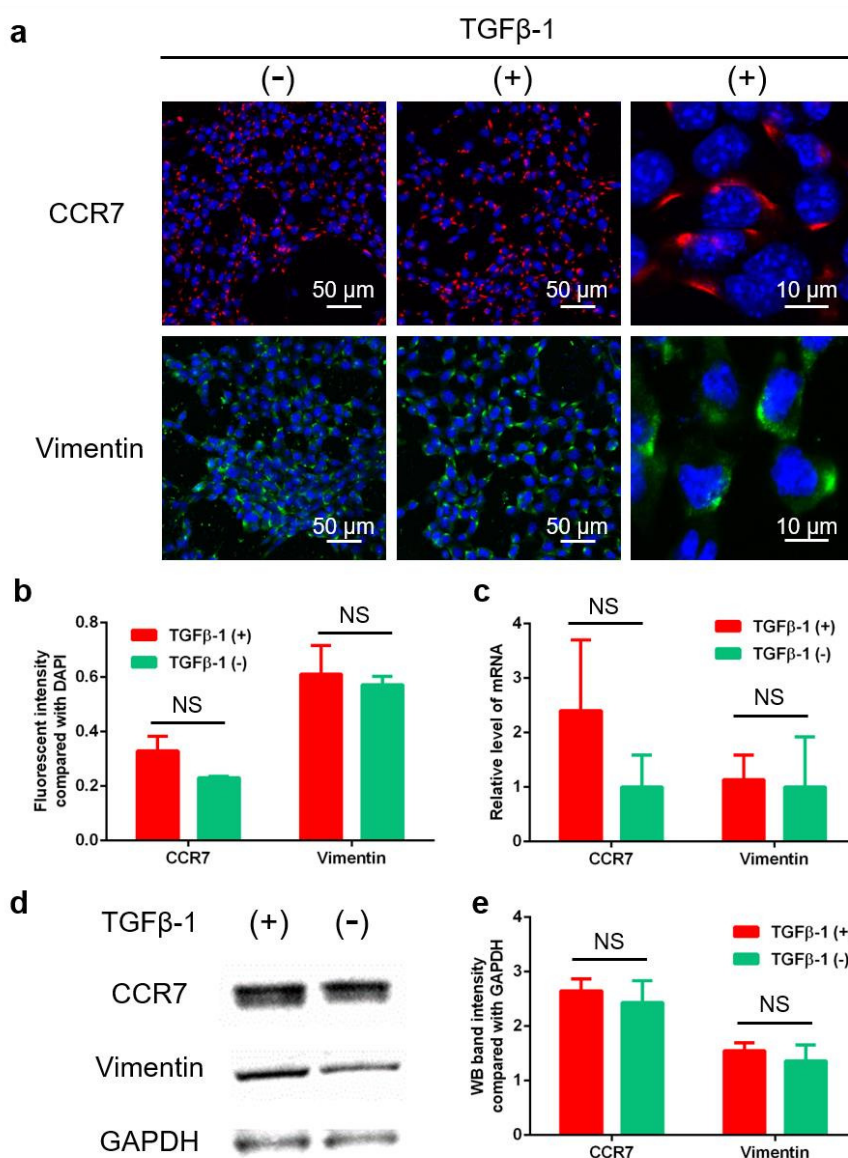


Figure S1. Murine 4T1 cell line is highly metastatic with CCR7 overexpression. a) Immunofluorescence staining (red: CCR7; green: vimentin; blue: nucleus), b) quantification of fluorescence staining, c) RT-PCR, d) western blot and e) quantification of western blot of CCR7 and vimentin expression in 4T1/FLuc-GFP cells, with or without induction by TGF β -1 (10 ng/ml). (NS: not significant, $p \geq 0.05$, $n=3$).

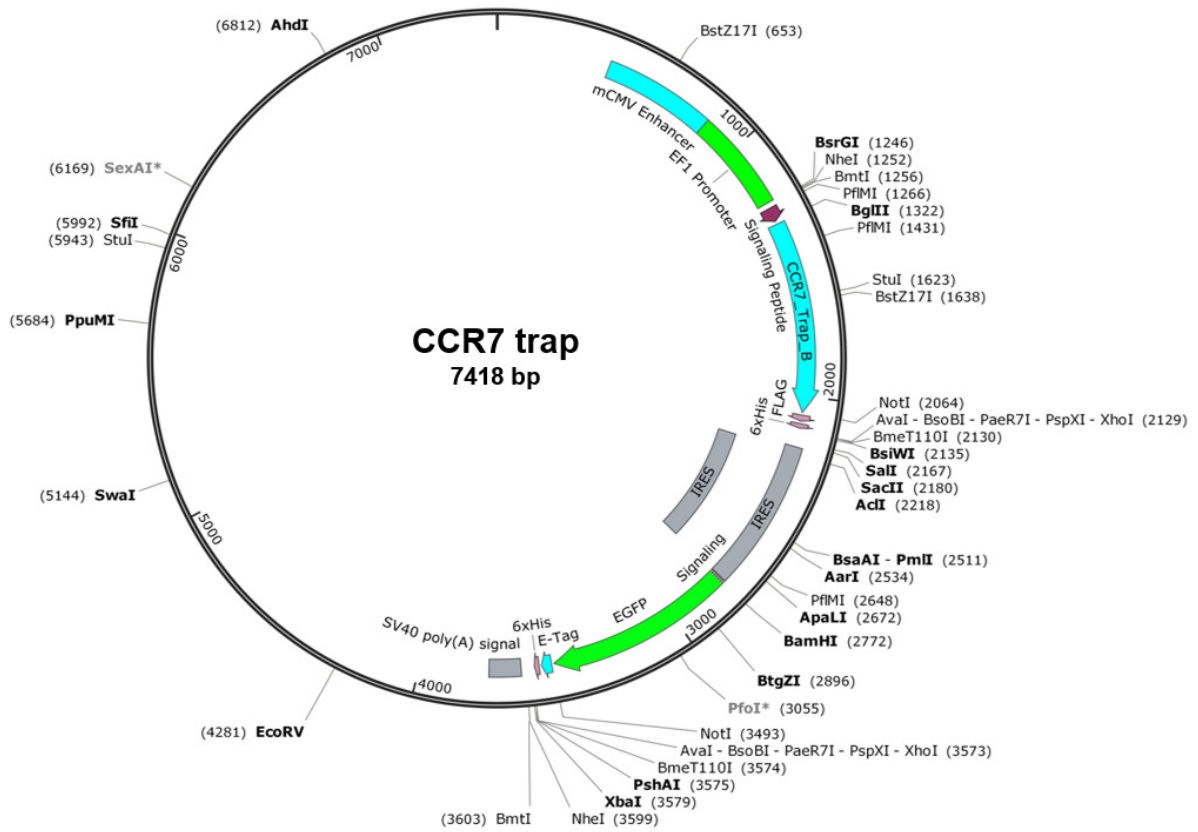


Figure S2. Map of CCR7 trap plasmid.

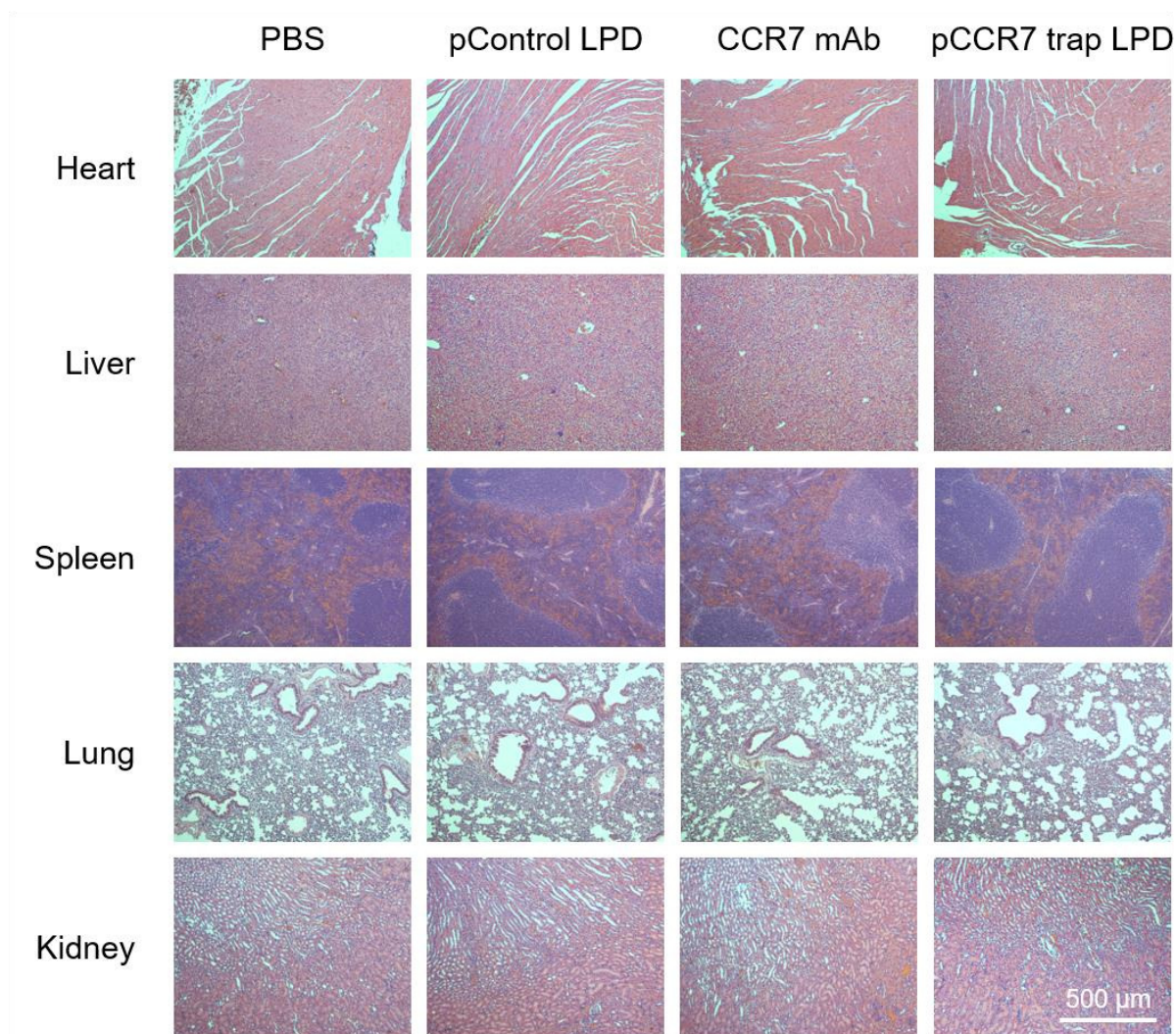


Figure S3. Treatments showed no toxicity to the major organs. H&E staining of heart, liver, spleen, lung and kidney from mice at the endpoint.

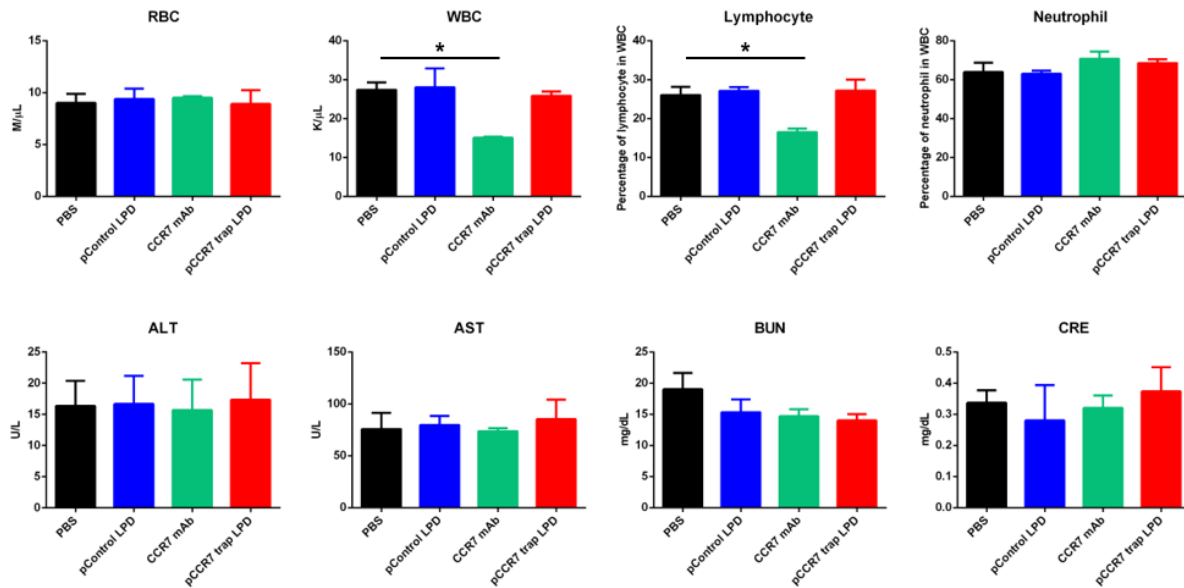


Figure S4. CCR7 mAb treatment decreased lymphocyte level in the blood, but all treatments showed no impairment to the liver and kidney function. Blood tests (RBC, WBC, lymphocyte, neutrophil, ALT, AST, BUN and CRE) of mice at the endpoint. The normal ranges of these parameters in mice are as follows: RBC: 7-13 M/ μ L; WBC: 5-12 K/ μ L; lymphocyte: 20-70%; neutrophil: 20-70%; ALT: 10-60 U/L; AST: 50-100 U/L; BUN: 10-33 mg/dL; CRE: 0.06-2.72 mg/dL. (*, $p < 0.05$; $n = 6$).