



Supporting Information

for

Targeted therapeutic effect against the breast cancer cell line MCF-7 with a CuFe_2O_4 /silica/cisplatin nanocomposite formulation

B. Rabindran Jermy, Vijaya Ravinayagam, Widyan A. Alamoudi, Dana Almohazey, Hatim Dafalla, Lina Hussain Allehaibi, Abdulhadi Baykal, Muhammet S. Toprak and Thirunavukkarasu Somanathan

Beilstein J. Nanotechnol. **2019**, *10*, 2217–2228. doi:10.3762/bjnano.10.214

Additional figure

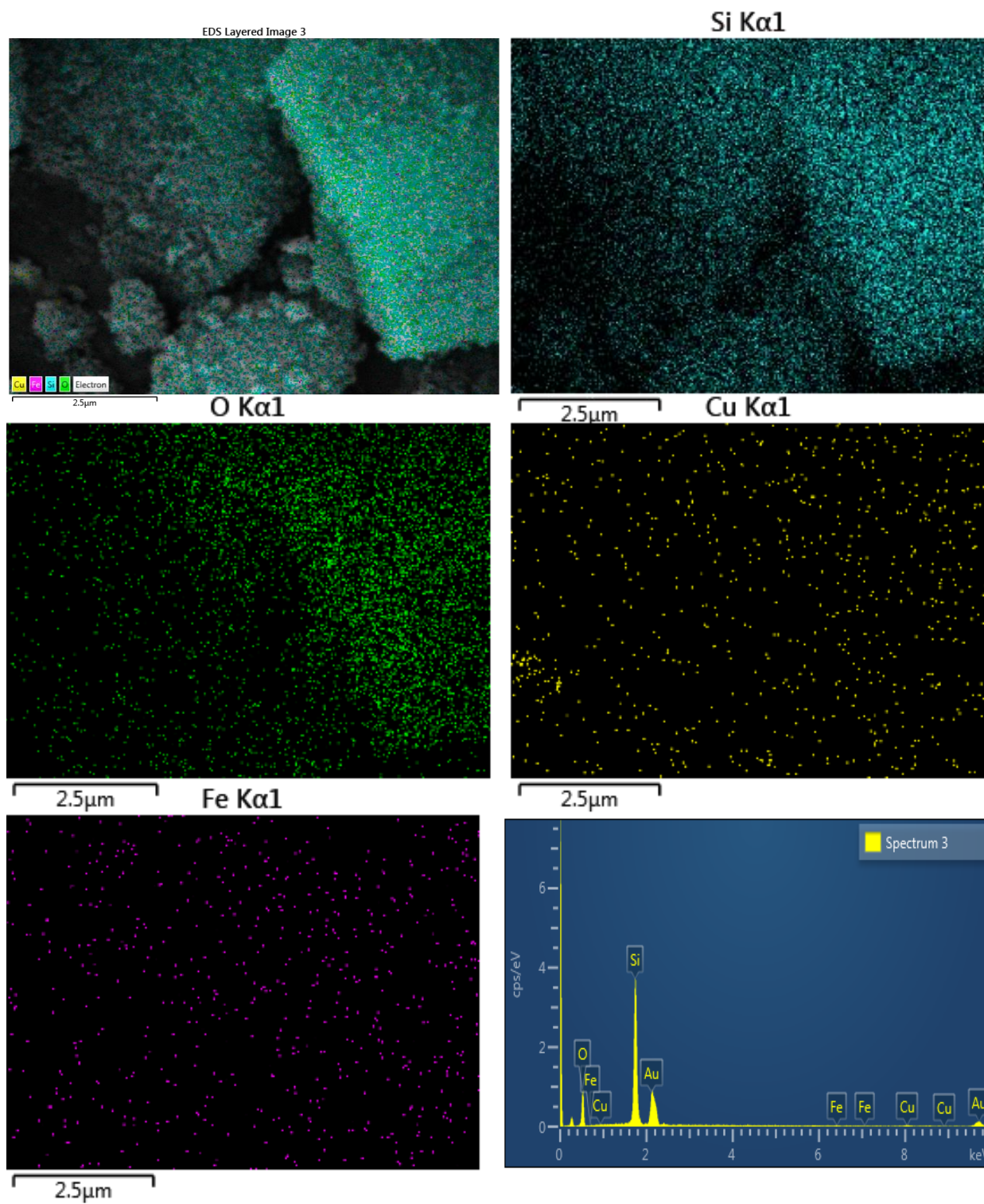


Figure S1: SEM-EDX analysis 30% CuFe₂O₄/HYPS.