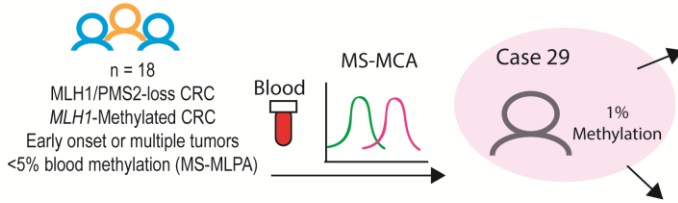


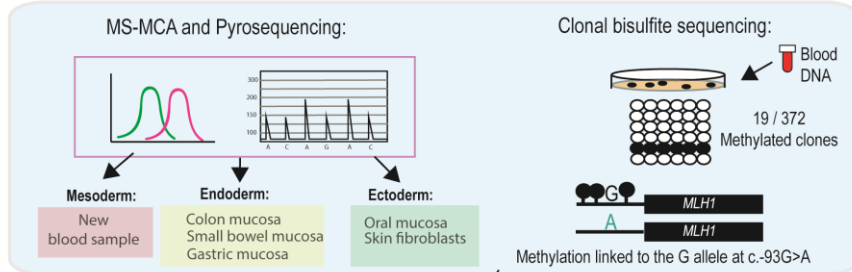
Highly sensitive *MLH1* methylation screening:



Clinico-pathological characterization

- Immunohistochemical staining
 Somatic mutation analysis:
- Mutations in KRAS, NRAS and BRAF by the Idylla™ platform
 - NGS customized panel of 126 genes (I2HCP v2.1)

Confirmation of the mosaic constitutional *MLH1* epimutation



Characterization and classification of *MLH1* epimutation

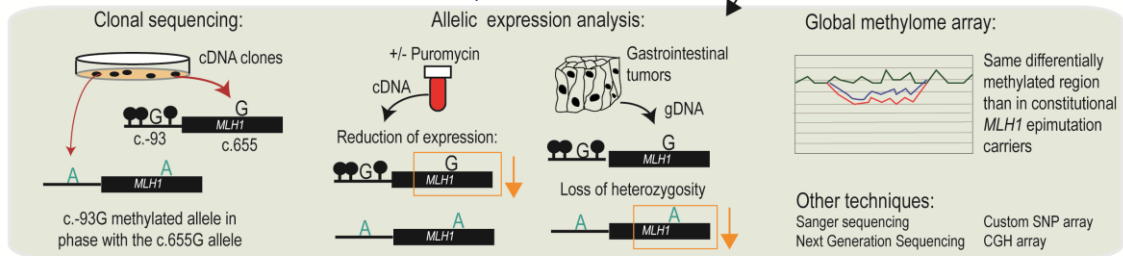


Figure S6. Schematic representation of the methodological strategy and summary of the obtained results