

1 **A method for hand-foot-mouth disease prediction using**  
2 **Geodetector and LSTM model in Guangxi, China**

3 Jiangyan Gu<sup>1,2</sup>, Lizhong Liang<sup>3</sup>, Hongquan Song<sup>1,2,4\*</sup>, Yunfeng Kong<sup>1,2\*</sup>, Rui Ma<sup>1</sup>, Yane Hou<sup>1</sup>, Jinyu  
4 Zhao<sup>1</sup>, Junjie Liu<sup>1</sup>, Nan He<sup>1</sup>, Yang Zhang<sup>5</sup>

5 <sup>1</sup> Laboratory of Geospatial Technology for the Middle and Lower Yellow River Regions, Ministry of  
6 Education, Henan University, Kaifeng, Henan 475004, China

7 <sup>2</sup> Institute of Urban Big Data, College of Environment and Planning, Henan University, Kaifeng, Henan  
8 475004, China

9 <sup>3</sup> The Affiliated Hospital of Guangdong Medical University, Zhanjiang 524001, China

10 <sup>4</sup> Henan Key Laboratory of Integrated Air Pollution Control and Ecological Security, Henan University,  
11 Kaifeng, Henan 475004, China

12 <sup>5</sup> Institute for Global Innovation and Development, East China Normal University, Shanghai, 200062,  
13 China

14  
15 \*Corresponding author: hqsong@henu.edu.cn (H. Song); yfkong@henu.edu.cn (Y.  
16 Kong)

17

18

19 Address: College of Environment and Planning, Henan University Jinming Campus,  
20 Kaifeng, Henan Province 475004, China

21

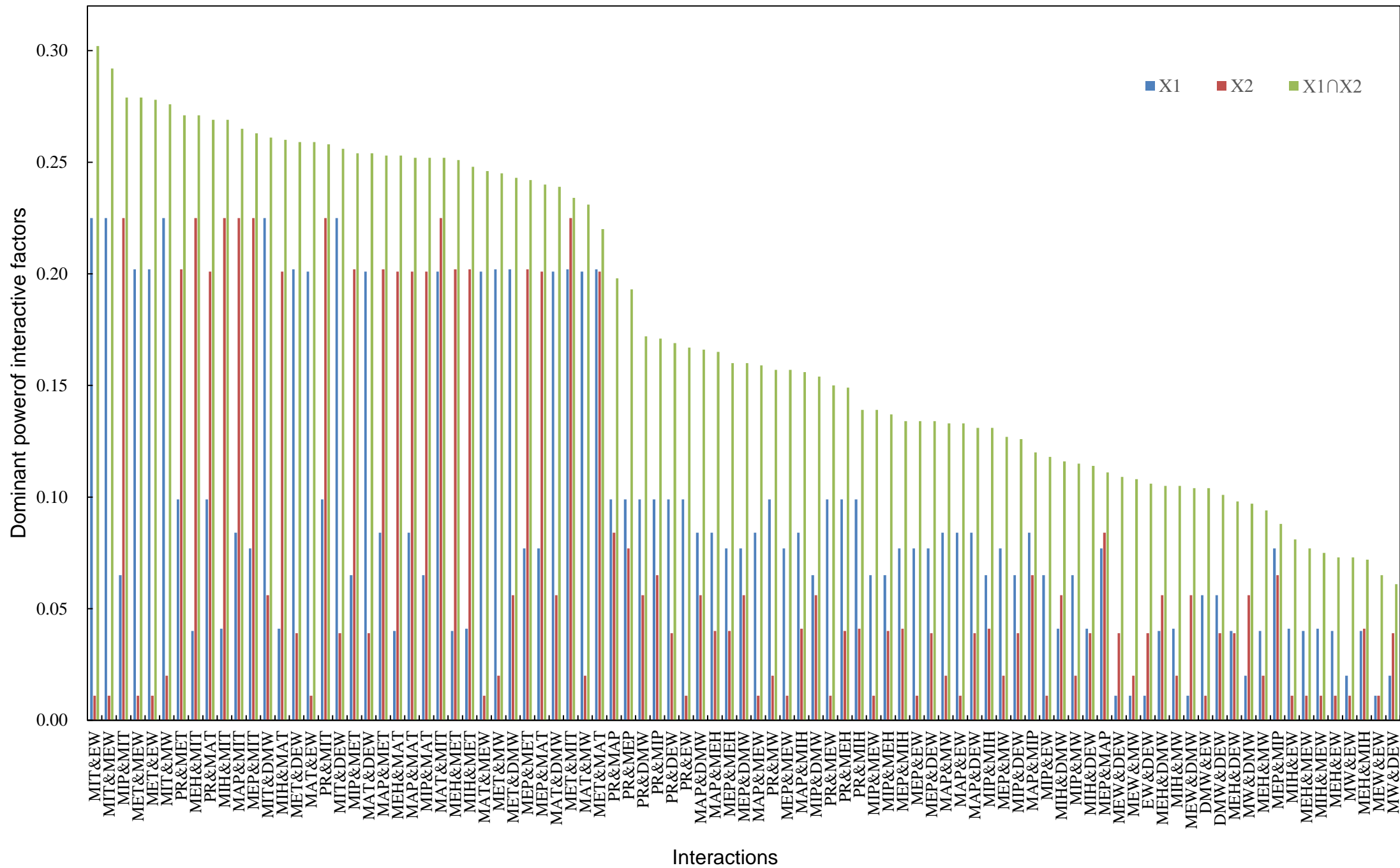
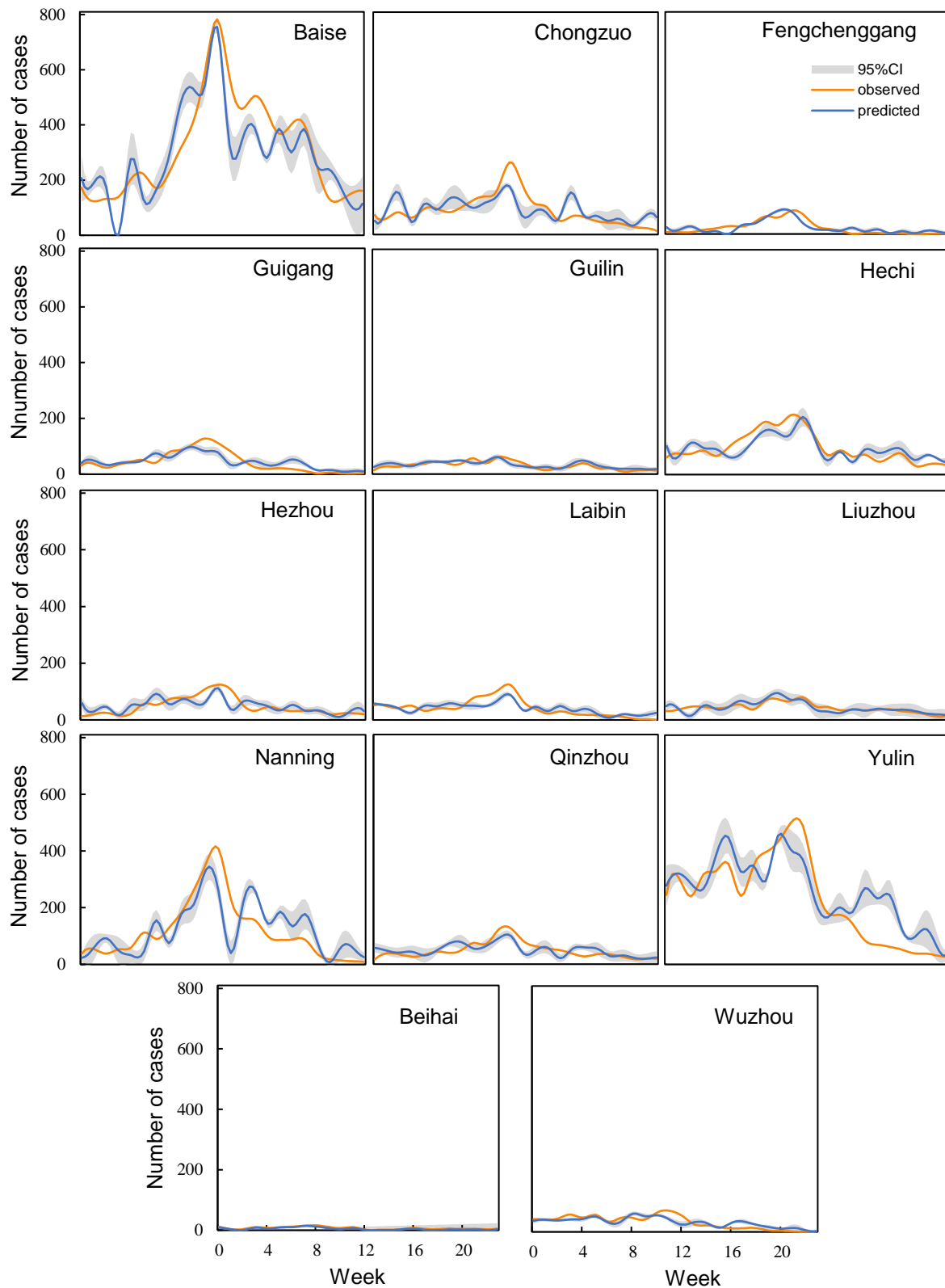


Figure S1. The entire interactive effects between the potential influencing factors on HFMD.



**Figure S2.** The entire region-specific model predictions of HFMD compared with observations in subregions. The grey shaded areas demote to the 95% confidence interval of the predictions.