

## Supplementary Information

### **Glucose lowering by SGLT2-inhibitor empagliflozin accelerates atherosclerosis regression in hyperglycemic STZ-diabetic mice**

Jan Pennig<sup>1</sup>, Philipp Scherrer<sup>1</sup>, Mark Colin Gissler<sup>1</sup>, Nathaly Anto-Michel<sup>1</sup>, Natalie Hoppe<sup>1</sup>, Lisa Fünér<sup>1</sup>, Carmen Härdtner<sup>1</sup>, Peter Stachon<sup>1</sup>, Dennis Wolf<sup>1</sup>, Ingo Hilgendorf<sup>1</sup>, Adam Mullick<sup>2</sup>, Christoph Bode<sup>1</sup>, Andreas Zirlik<sup>1,3</sup>, Ira J. Goldberg<sup>4</sup>, Florian Willecke<sup>1\*</sup>

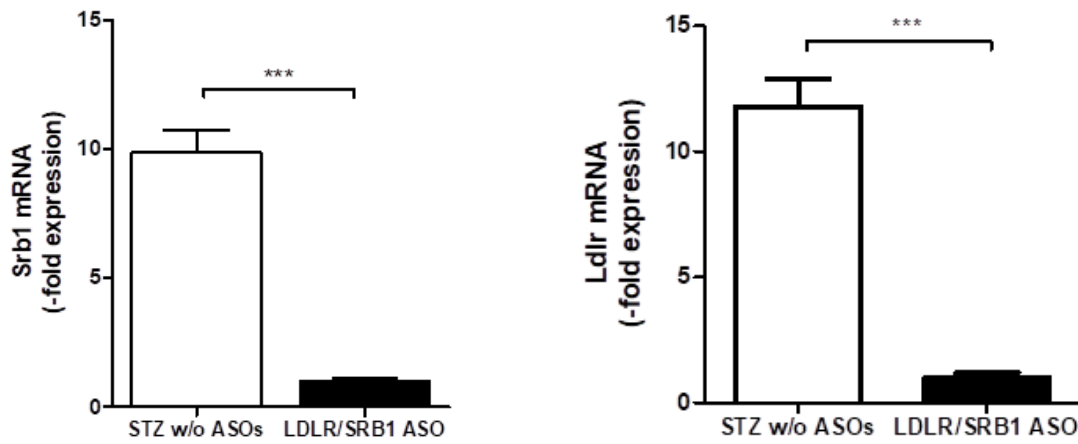
<sup>1</sup>*University Heart Center Freiburg-Bad Krozingen, Cardiology and Angiology I, University of Freiburg, Germany*

<sup>2</sup>*Ionis Pharmaceuticals, Carlsbad, California*

<sup>3</sup>*Division of Cardiology, Medical University of Graz, Graz, Austria*

<sup>4</sup>*Department of Medicine, New York University Langone Health, New York, NY*

**Supplementary Figure 1:** Hepatic mRNA expression of *Srb1* and *Ldlr* after ASO control or combined LDLR/SRB1 ASO treatment, assessed by quantitative PCR, N = 8 and 11/group, respectively. \*\*\* =  $p < 0.001$ .



**Supplementary Figure 2:** Relative expression of *Sglt2* (*slc5a2*) mRNA expression. Data derived from ImmGen RNAseq database

