

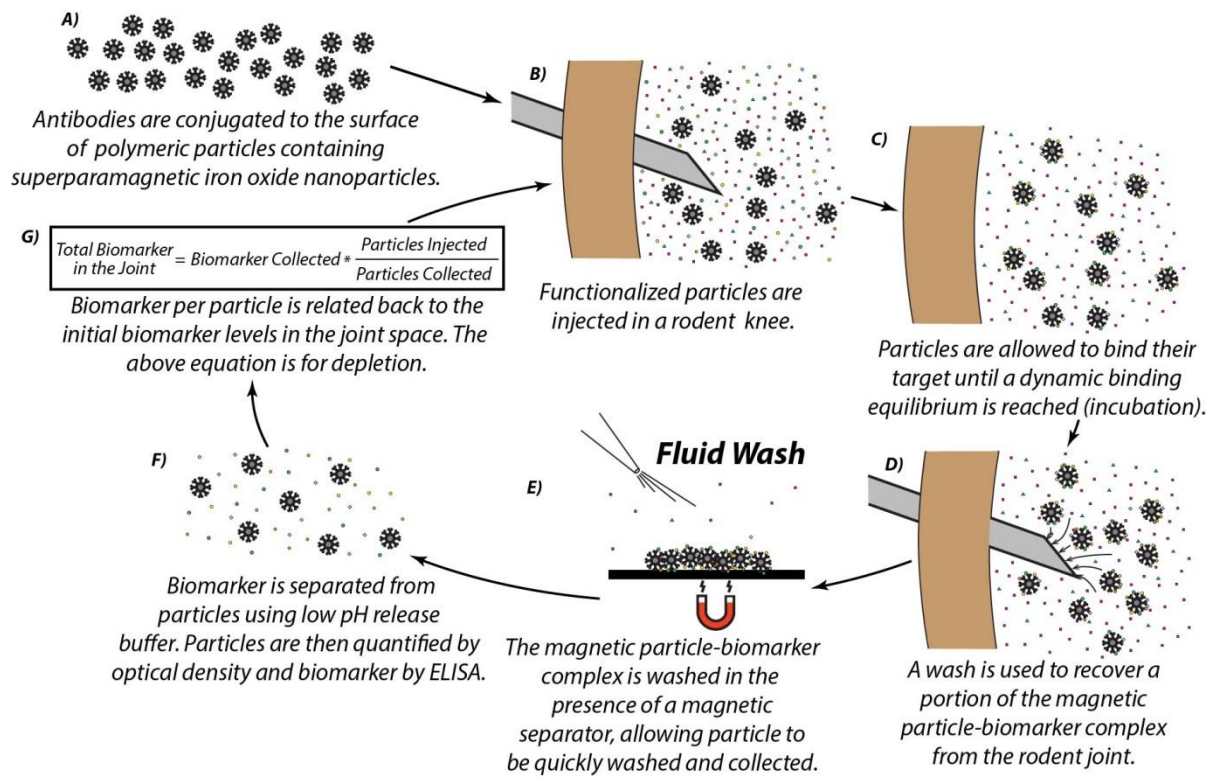
Supplemental Figure 1: Magnetic Capture Procedure

Supplemental Figure 2: Experimental Flow Chart for the Magnetic Capture Validation Experiments

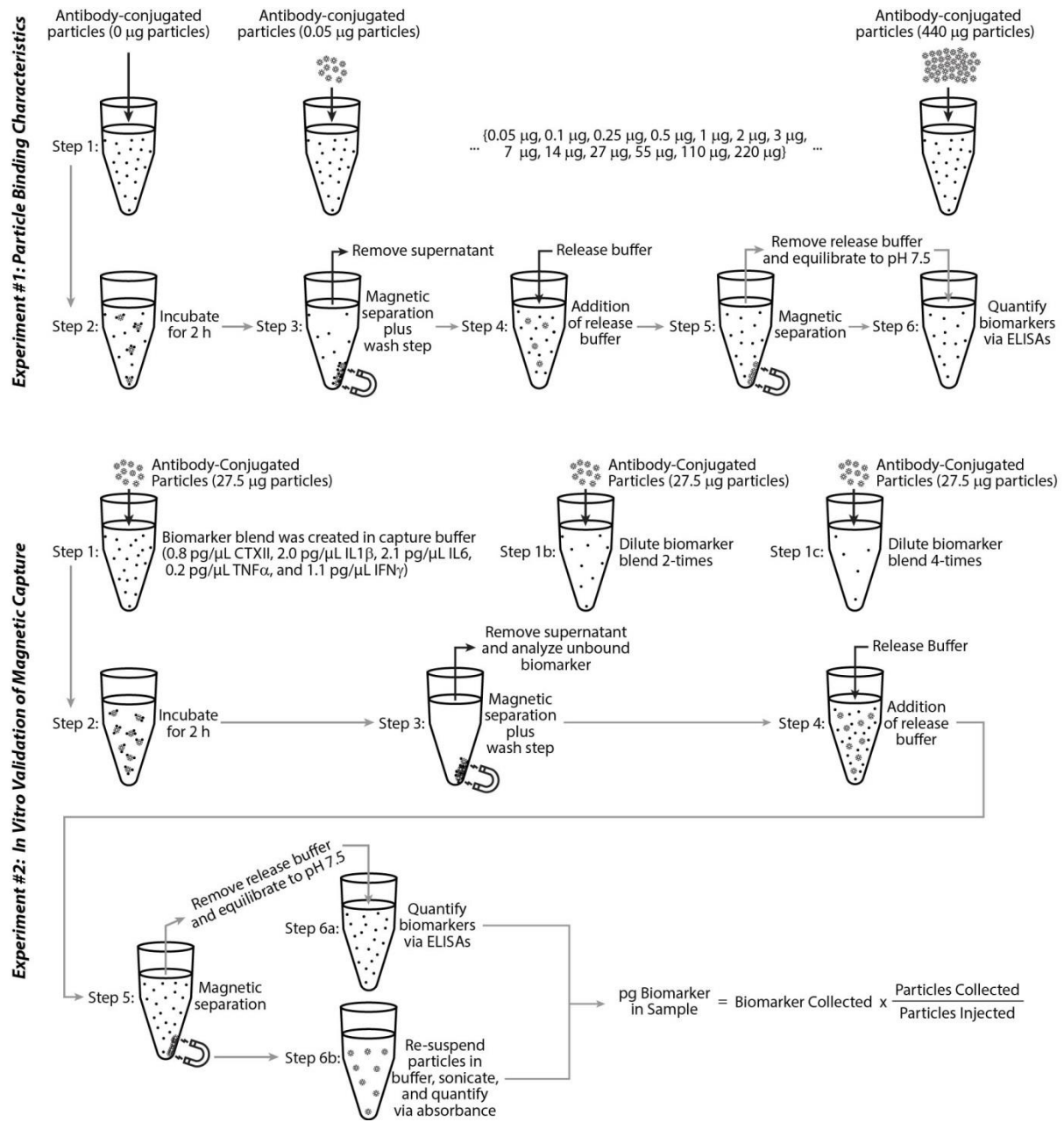
Supplemental Figure 3: Experimental Flow Chart for Studying the Effects of Age on the Severity of Joint Damage and Intra-articular Inflammation Following MCLT+MMT Surgery in the Rat

Supplemental Figure 4: Particle Collection Efficiency

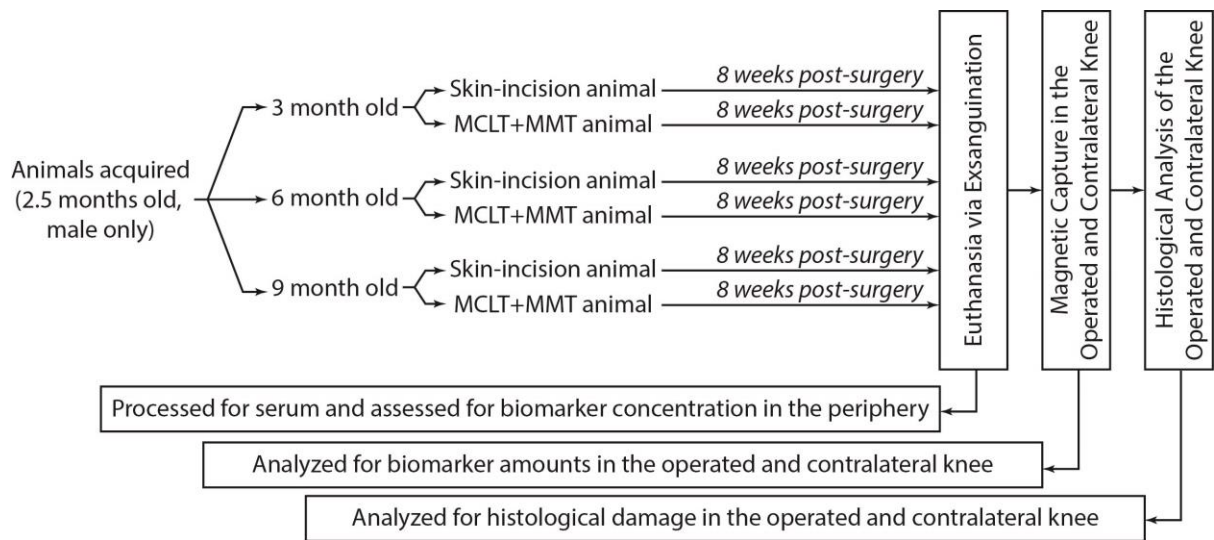
Supplemental Figure 1



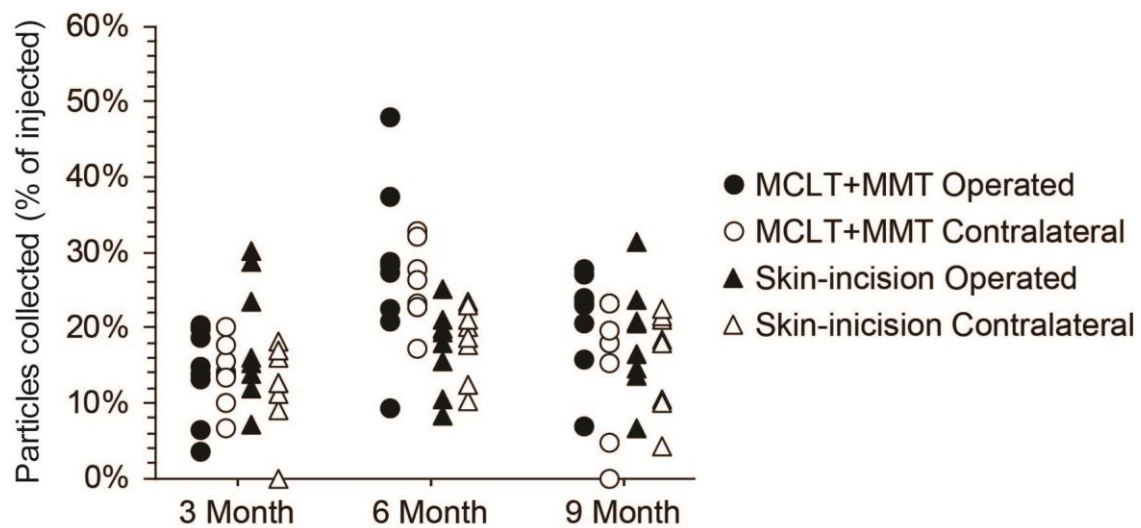
Supplemental Figure 2



Supplemental Figure 3



Supplemental Figure 4



Supplementary Table 1

	<i>Cartilage Area</i>	<i>Cartilage Damage</i>	<i>Total Affected Cartilage Width</i>	<i>Cartilage Matrix Loss Width</i>	<i>Hypertrophic Cartilage Damage</i>	<i>Osteophyte Area</i>	<i>Tibial Plateau Width</i>	<i>Medial Capsule Width</i>
Knee	<0.0001	<0.0001	<0.0001	<0.0001	<0.0001	<0.0001	0.0003	0.0044
Age	0.0003	0.0184	0.0009	Not Sig.	Not Sig.	0.0011	Not Sig.	Not Sig.
Surgery	0.0009	<0.0001	<0.0001	<0.0001	<0.0001	0.0031	0.0002	Not Sig.
Knee x Age	Not Sig.	0.0184	0.0134	Not Sig.	Not Sig.	Not Sig.	Not Sig.	Not Sig.
Knee x Surgery	<0.0001	<0.0001	<0.0001	<0.0001	<0.0001	<0.0001	Not Sig.	0.0445
Surgery x Age	Not Sig.	0.0184	Not Sig.	Not Sig.	Not Sig.	Not Sig.	Not Sig.	0.0261
Knee x Age x Surgery	Not Sig.	0.0184	Not Sig.	Not Sig.	Not Sig.	Not Sig.	Not Sig.	Not Sig.