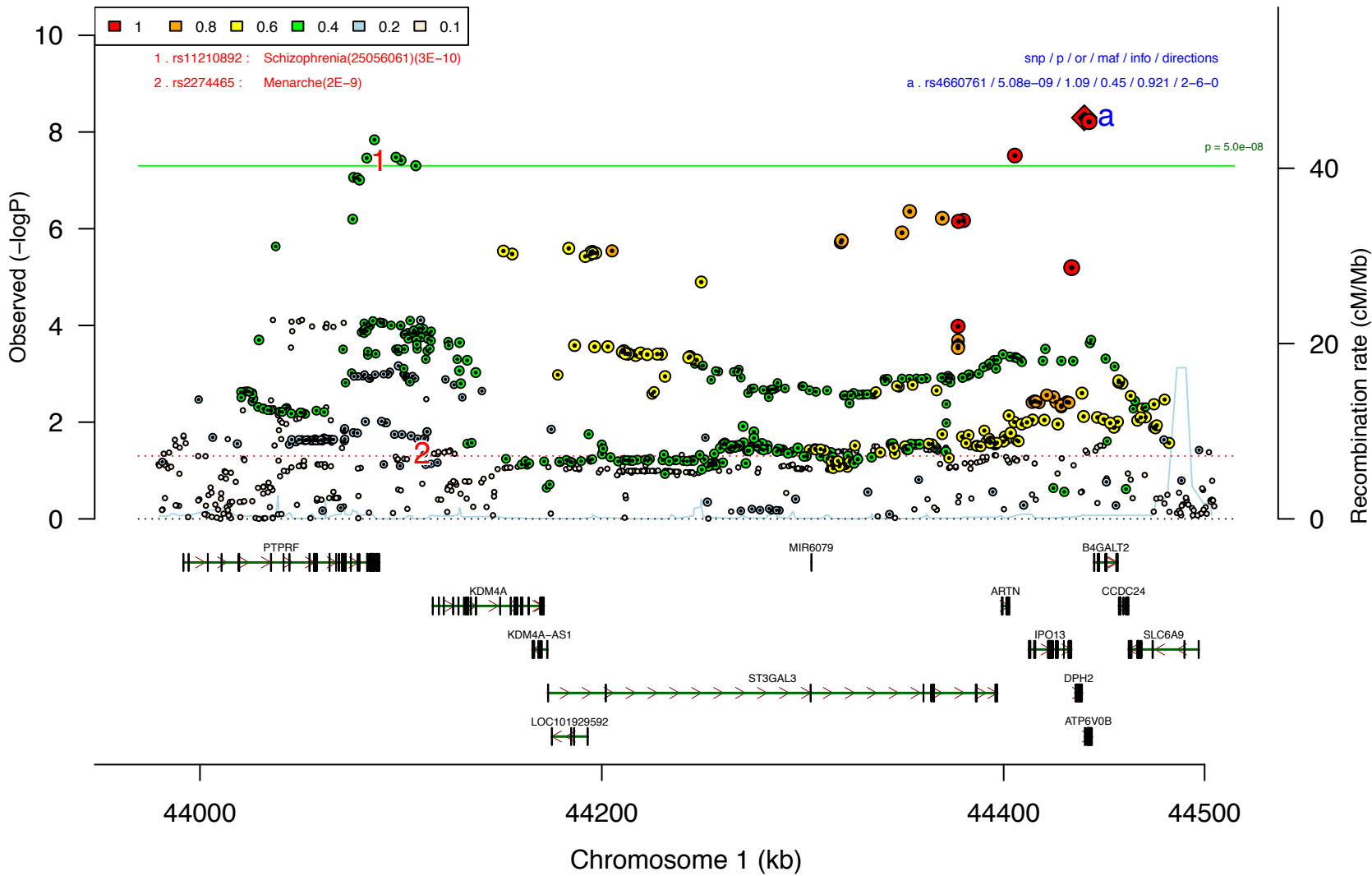
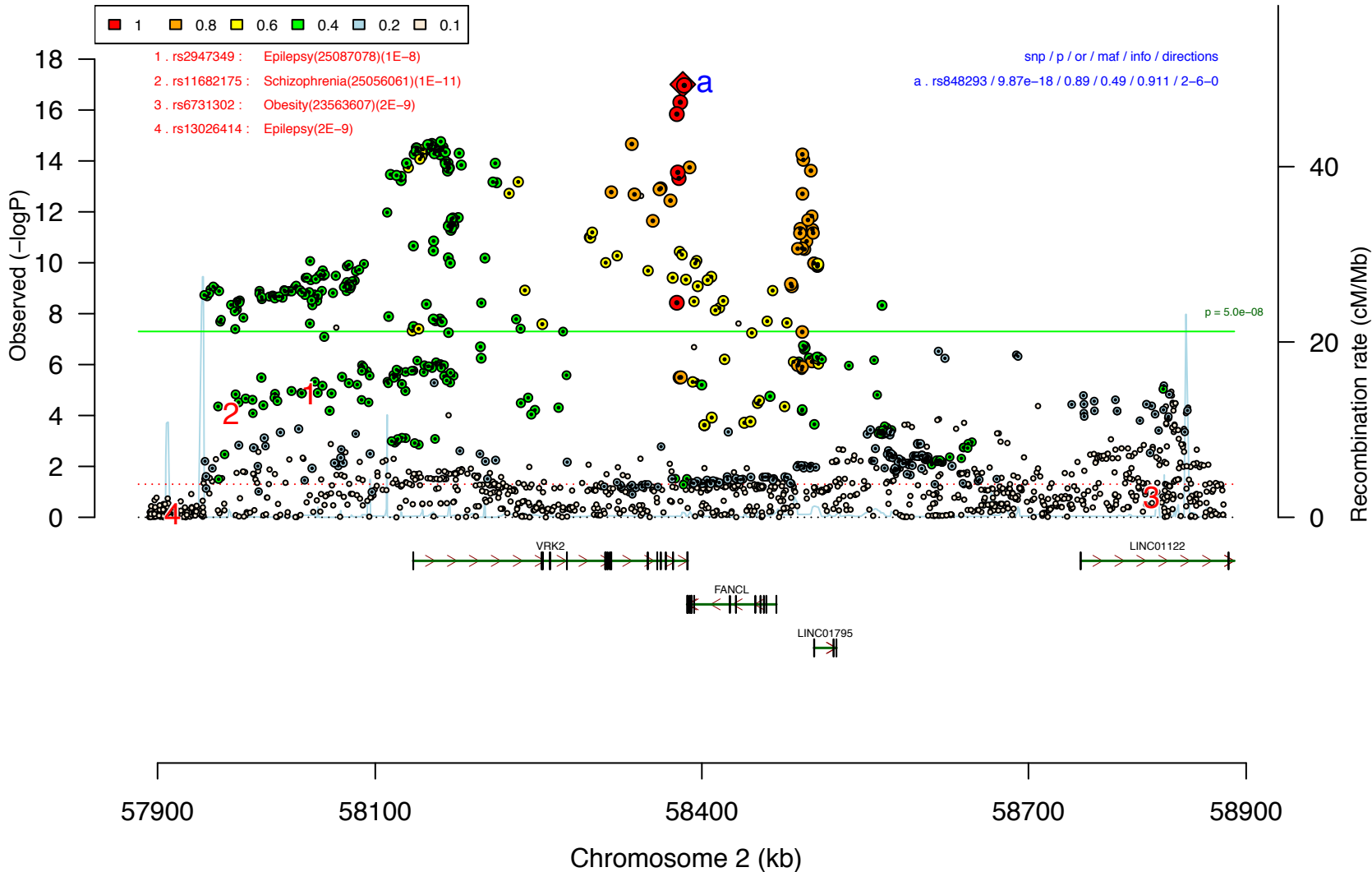


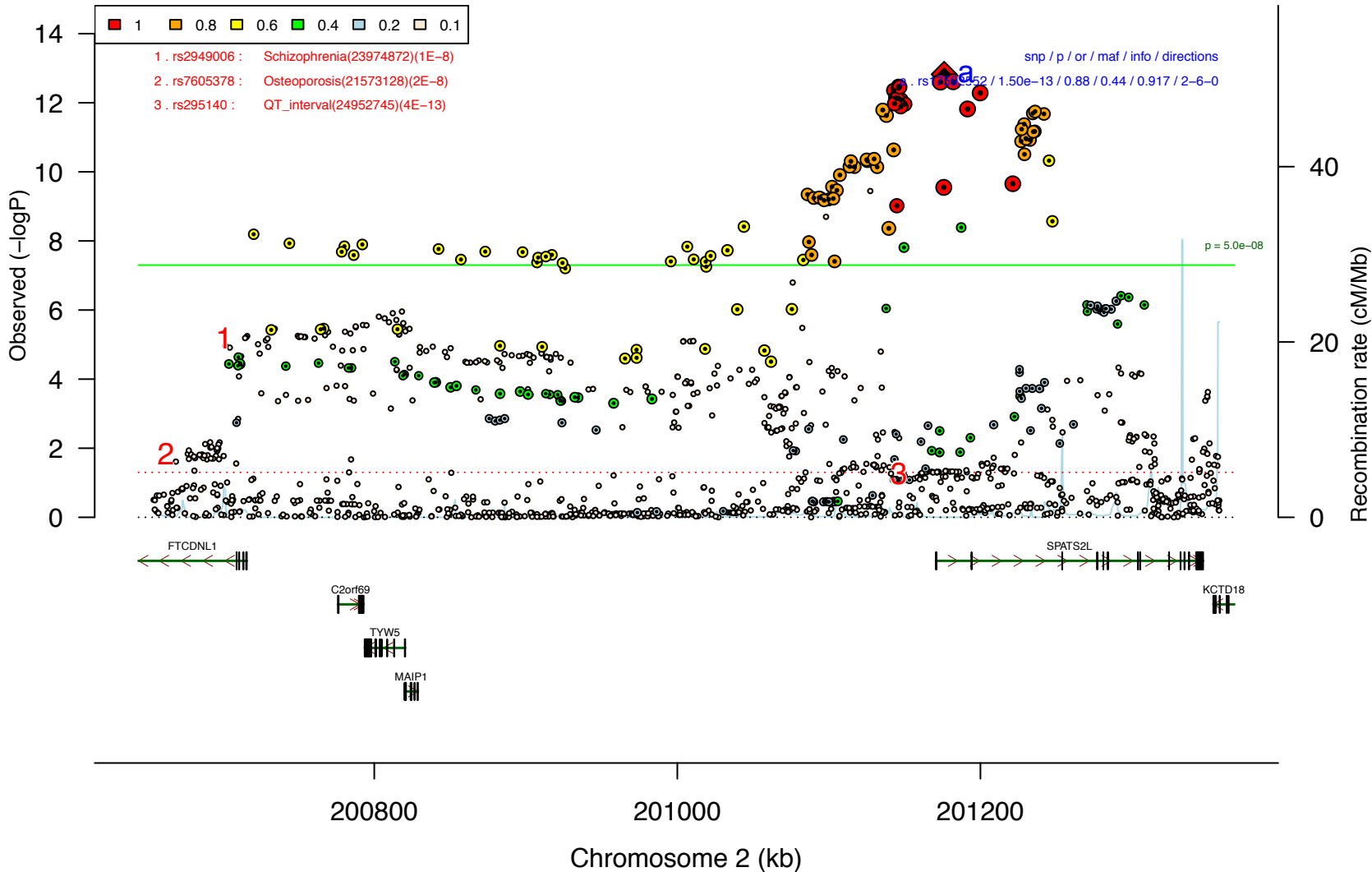
pgc_scz_asia_ASNstage12.0.chr1



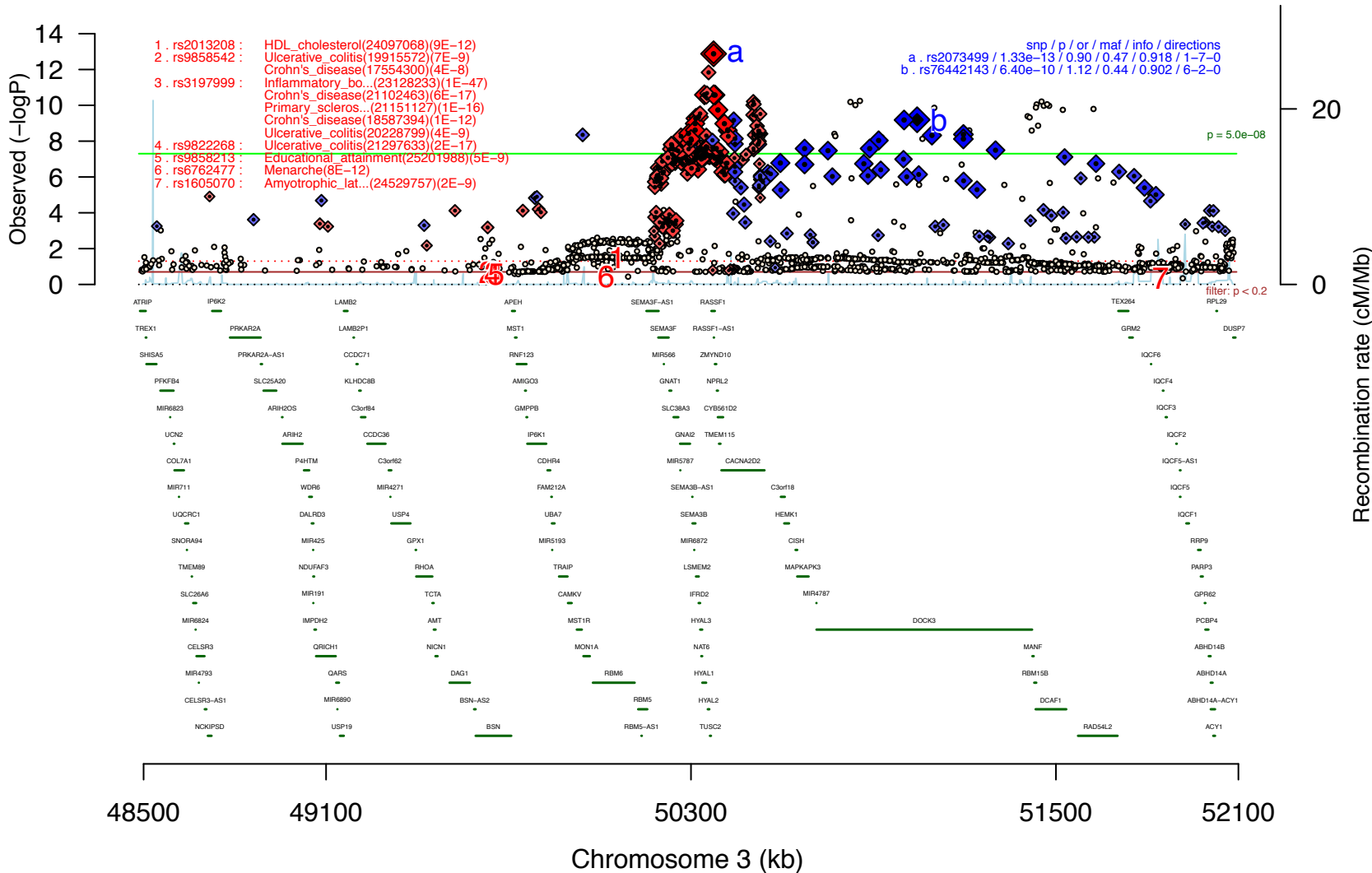
pgc_scz_asia ASNstage12.1.chr2



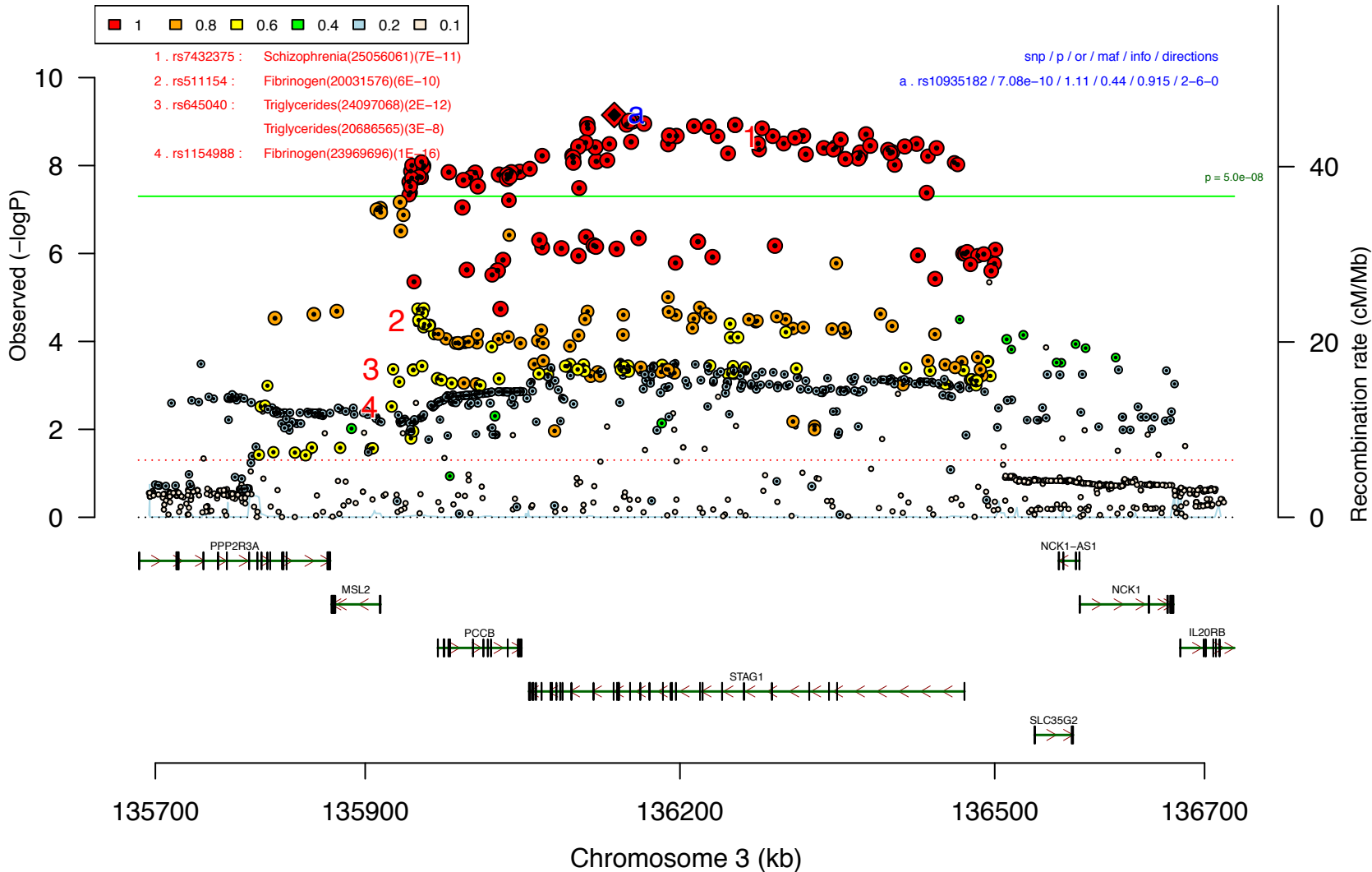
pgc_scz_asia_ASNstage12.2.chr2



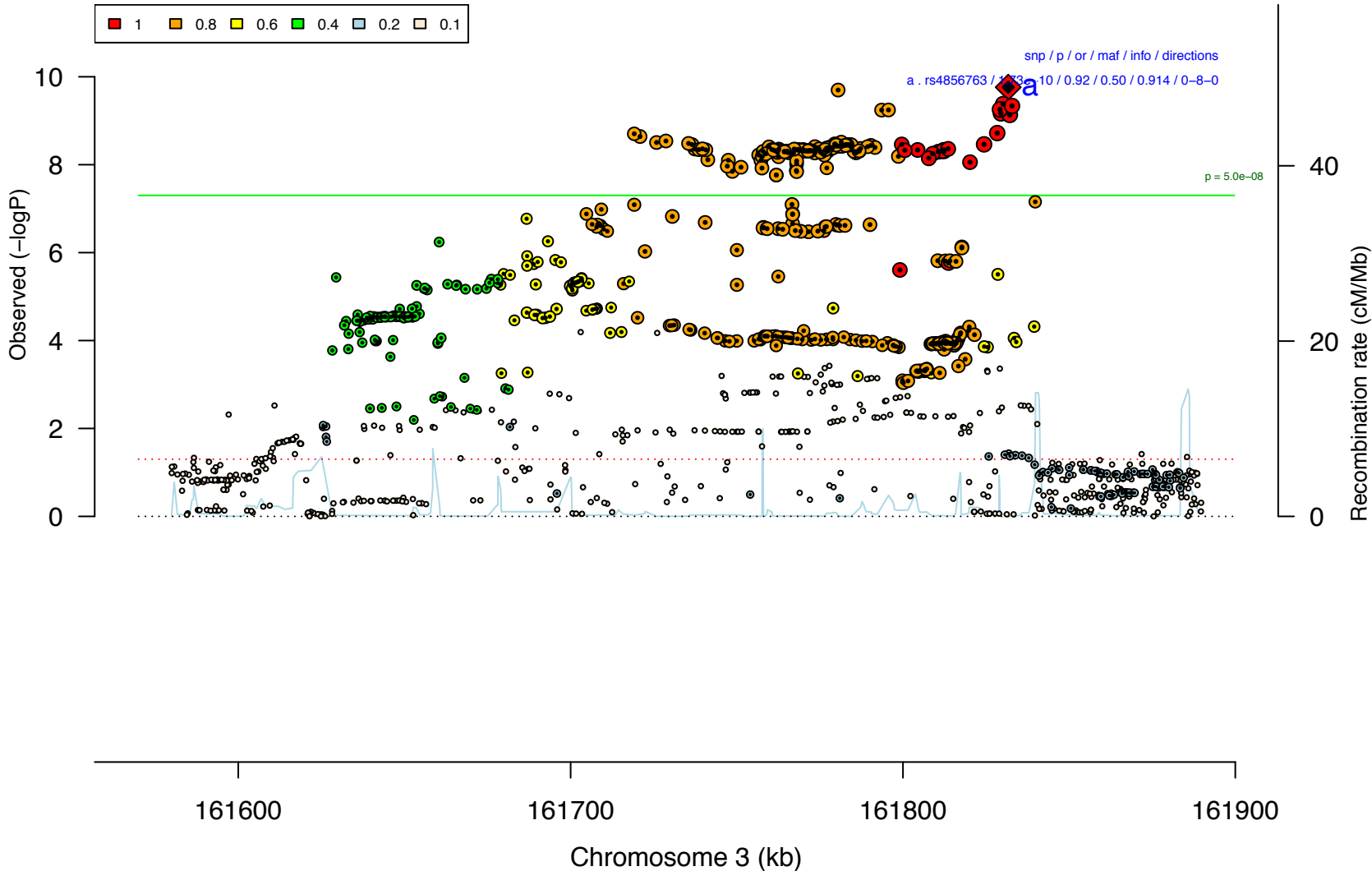
pgc_scz_asia_ASNstage12.3.chr3



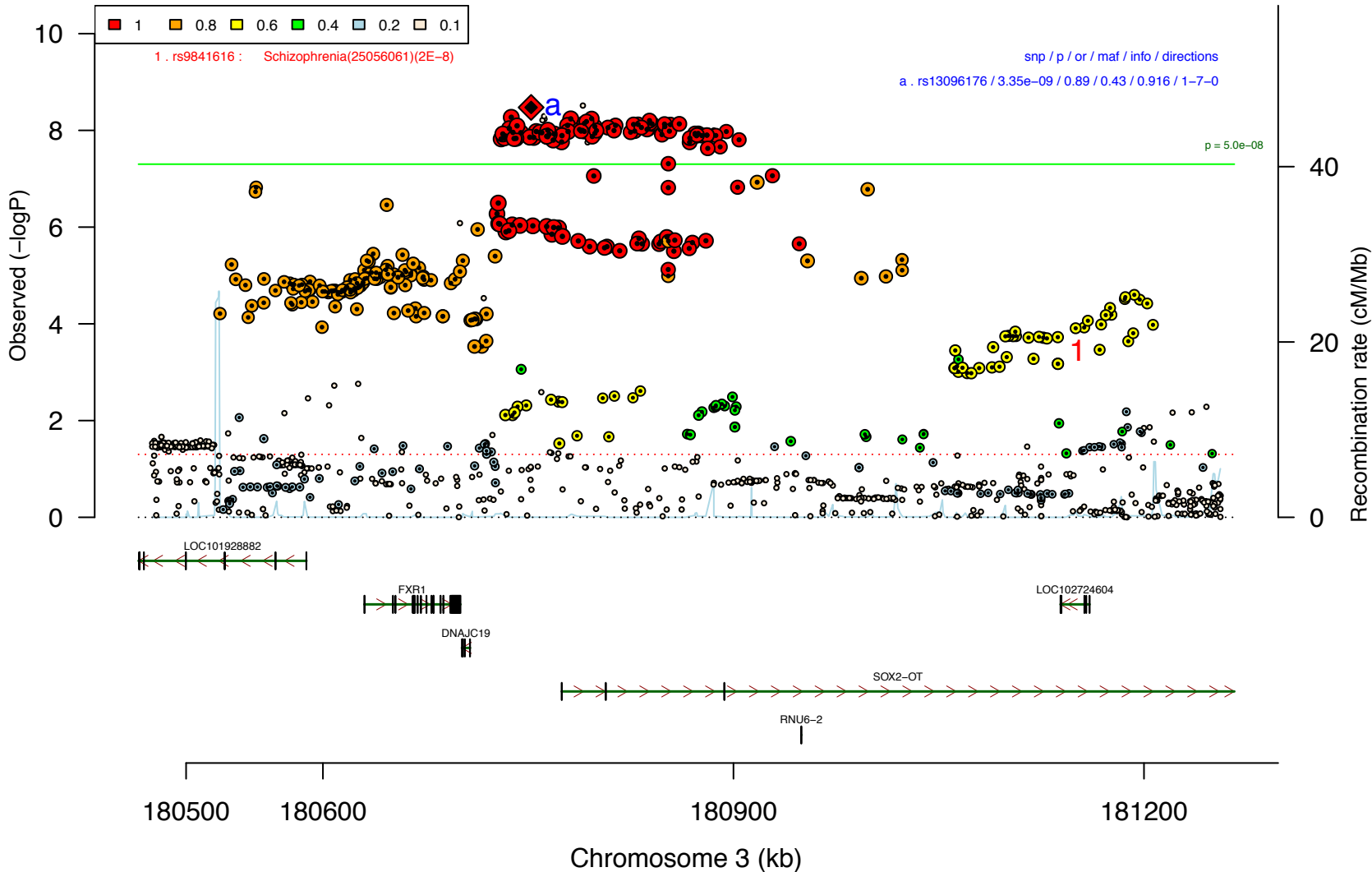
pgc_scz_asia ASNstage12.4.chr3



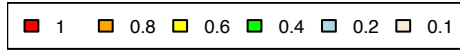
pgc_scz_asia_ASNstage12.5.chr3



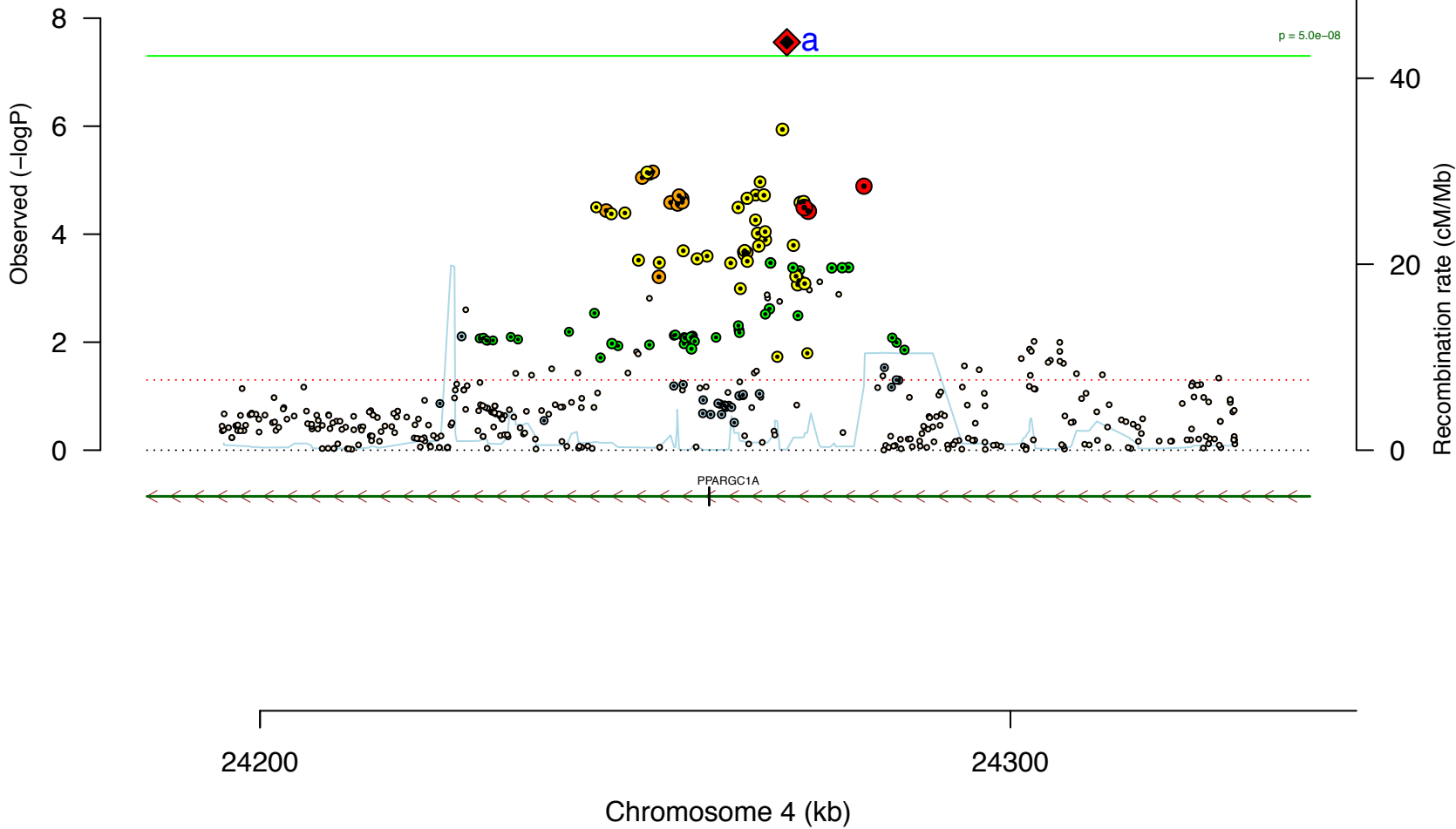
pgc_scz_asia ASNstage12.6.chr3



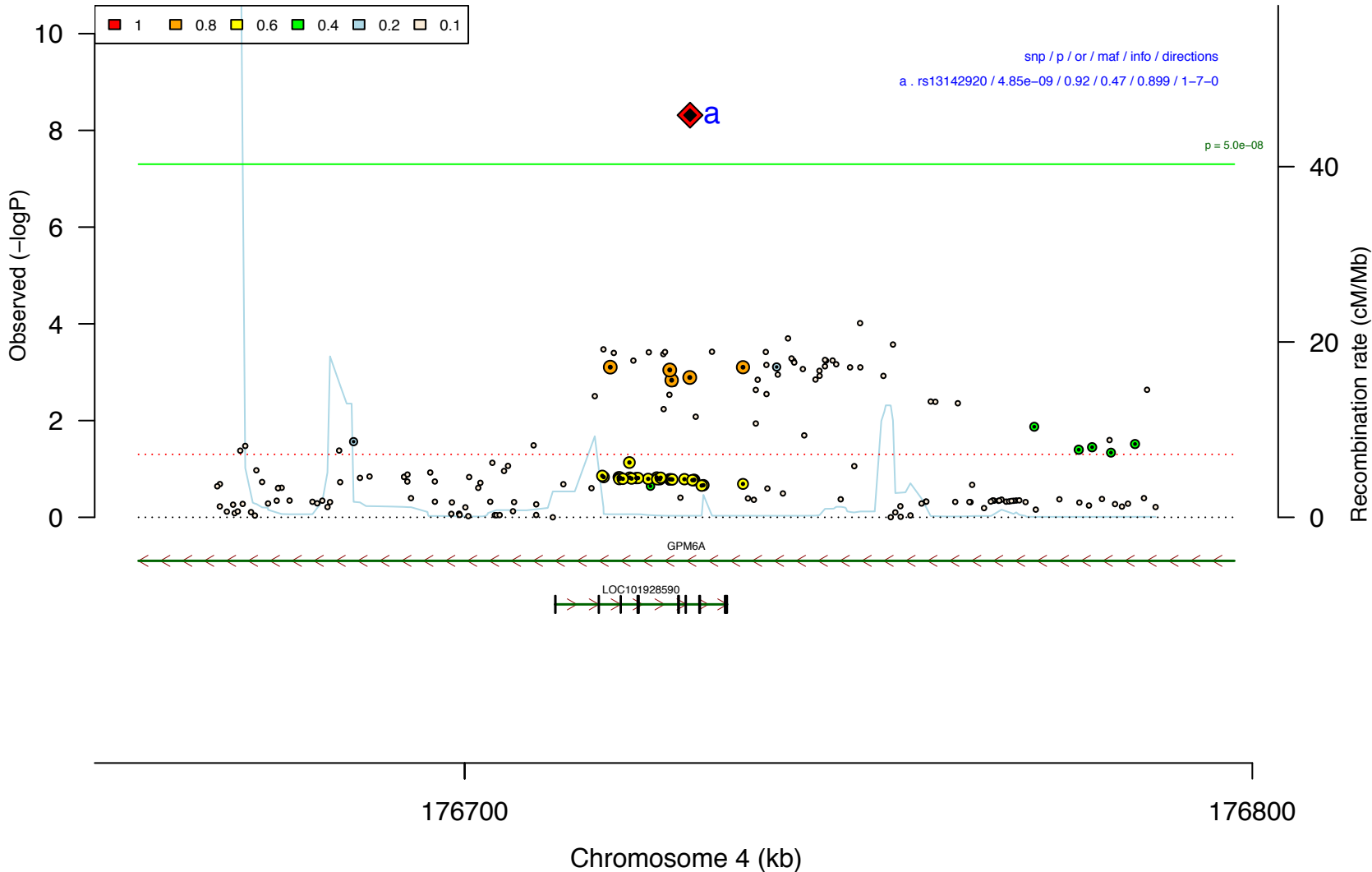
pgc_scz_asia_ASNstage12.7.chr4



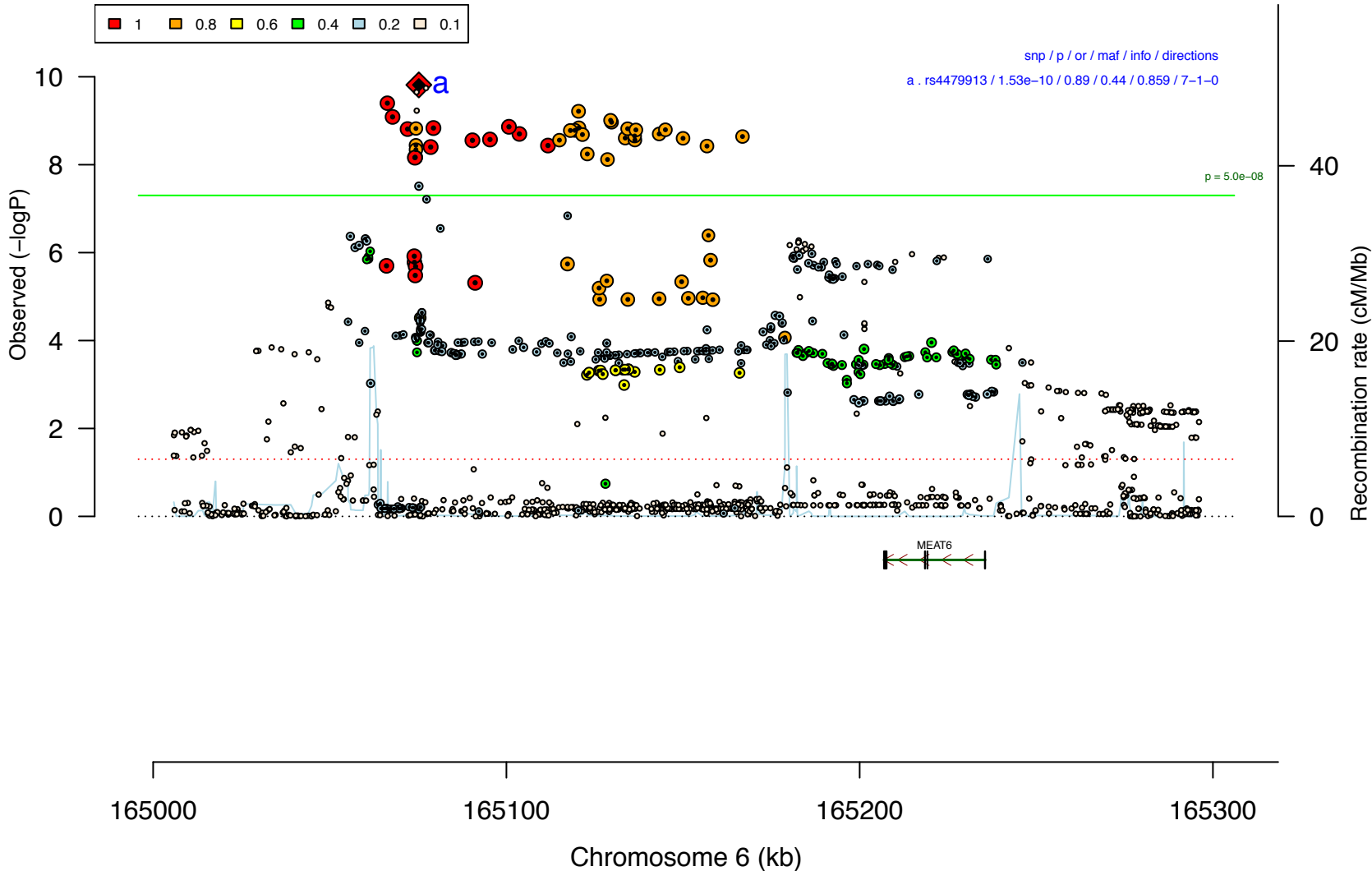
snp / p / or / maf / info / directions
a . rs6832165 / 2.79e-08 / 0.89 / 0.23 / 0.988 / 4-0-4



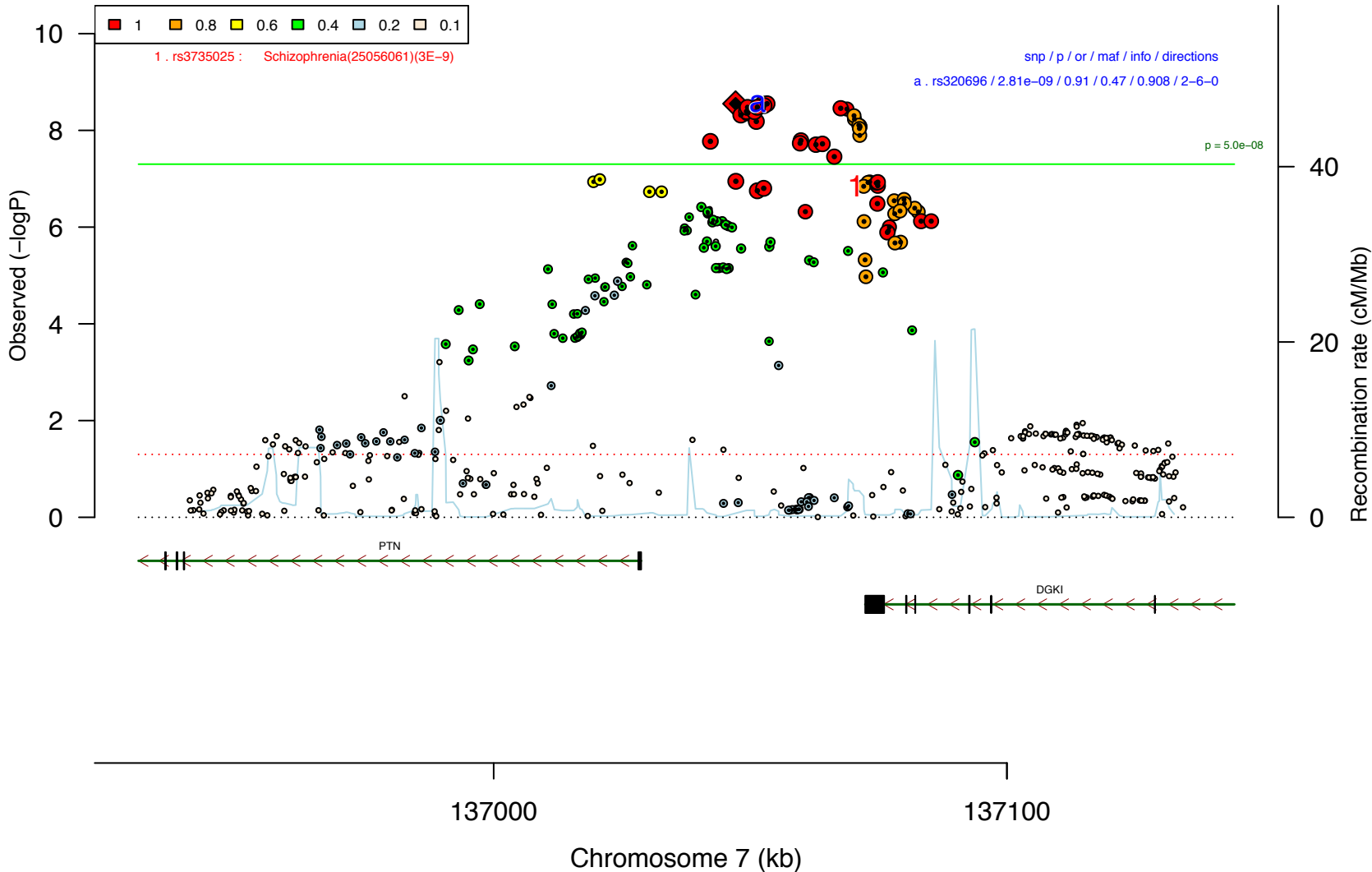
pgc_scz_asia_ASNstage12.8.chr4



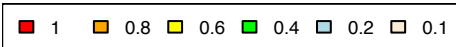
pgc_scz_asia_ASNstage12.9.chr6



pgc_scz_asia ASNstage12.10.chr7

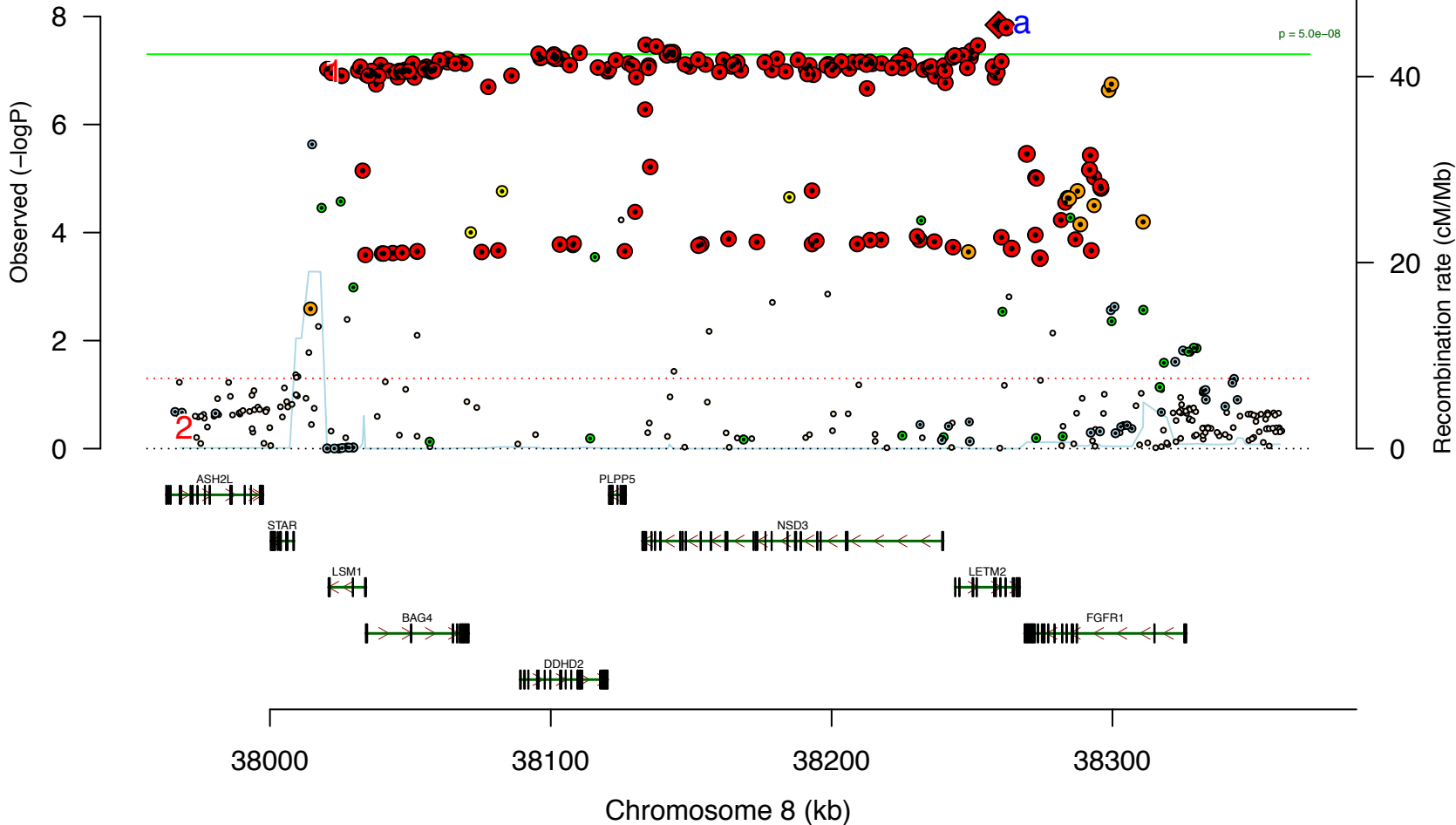


pgc_scz_asia_ASNstage12.11.chr8

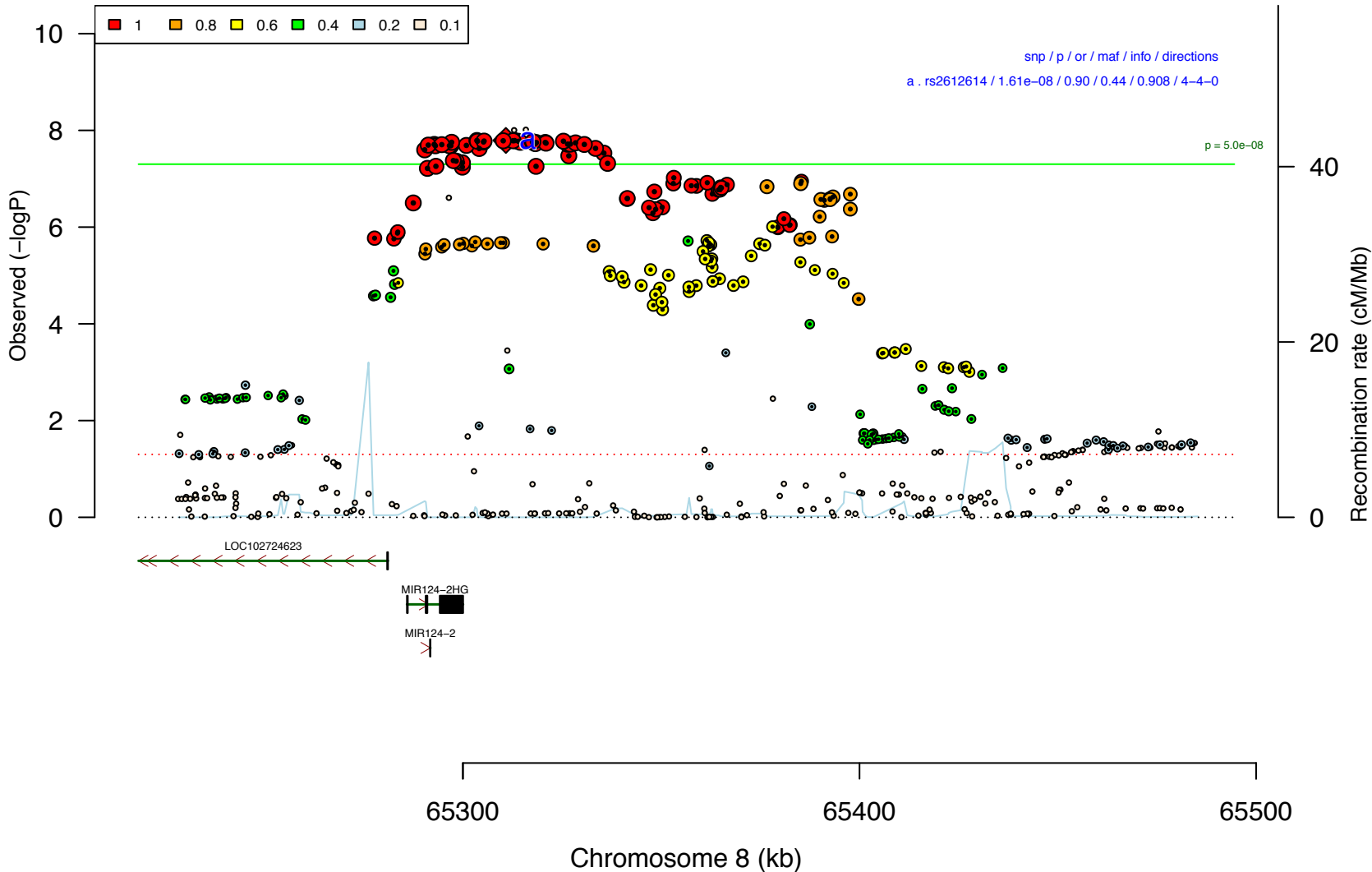


1 .rs16887244 : Schizophrenia(22037555)(1E-10)
 2 .rs2517388 : Menopause(9E-15)

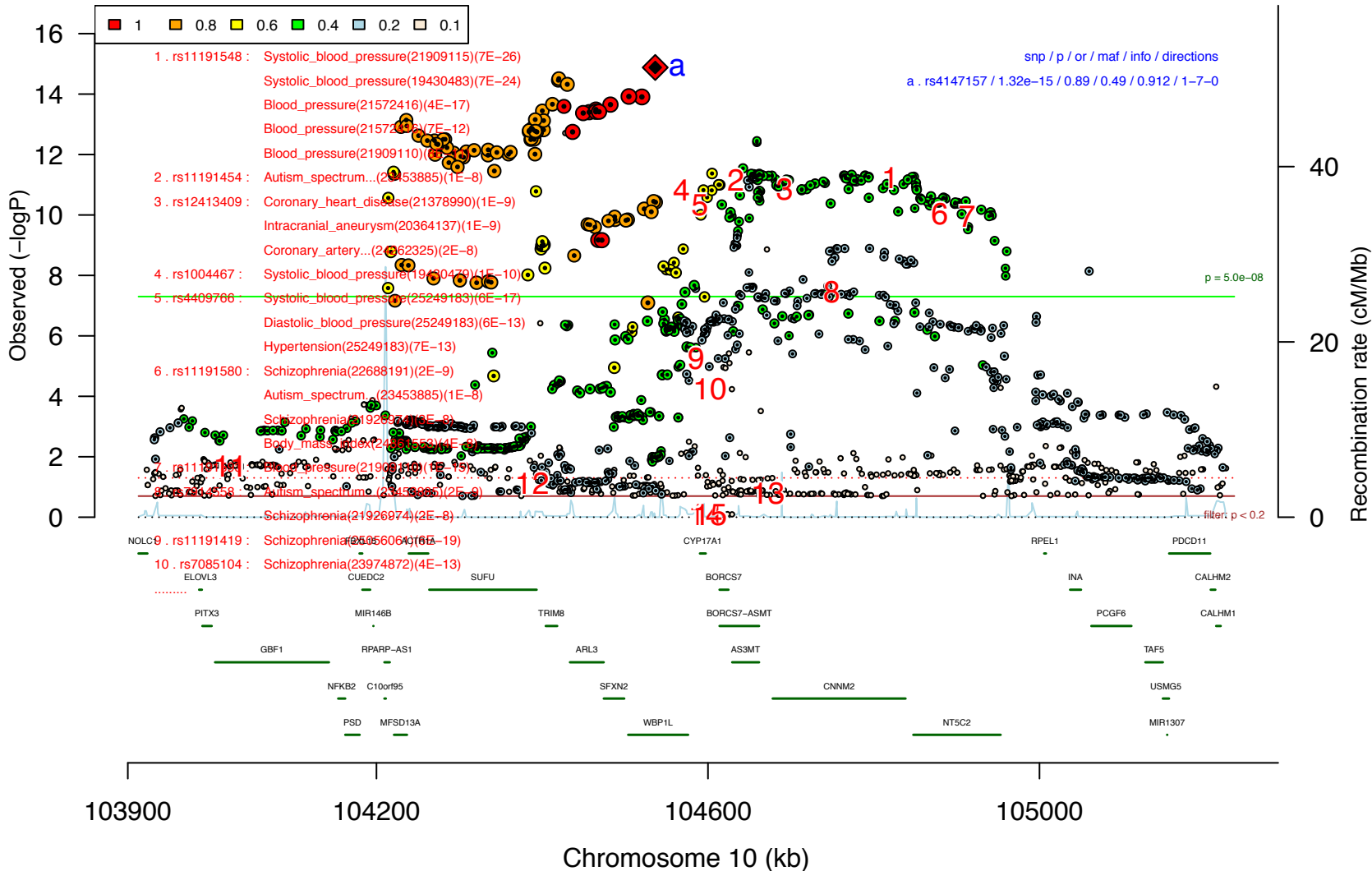
snp / p / or / maf / info / directions
 a .rs11986274 / 1.44e-08 / 0.92 / 0.47 / 0.912 / 7-1-0



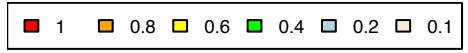
pgc_scz_asia_ASNstage12.chr8



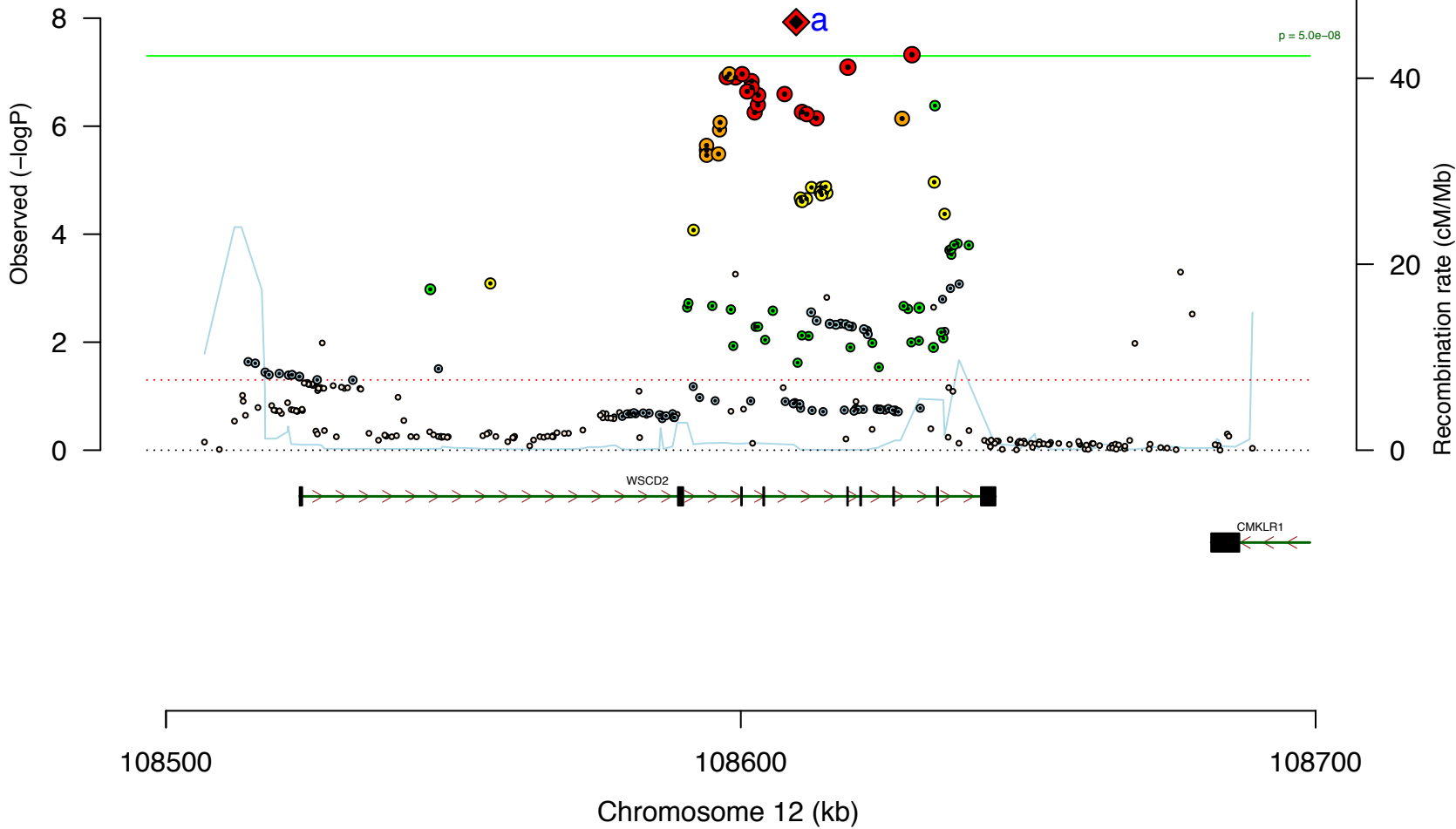
pgc_scz_asia_ASNstage12.13.chr10



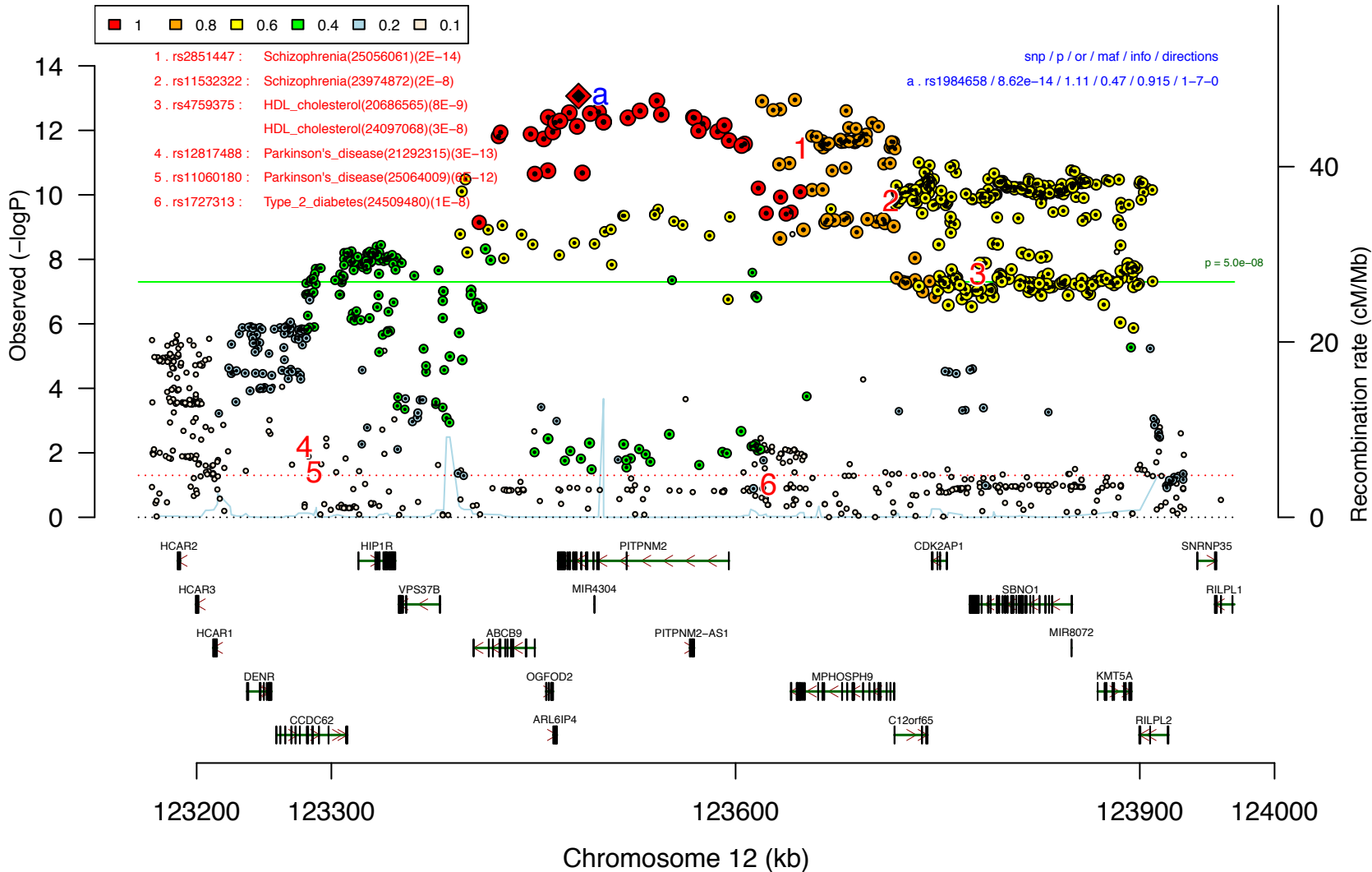
pgc_scz_asia_ASNstage12.14.chr12



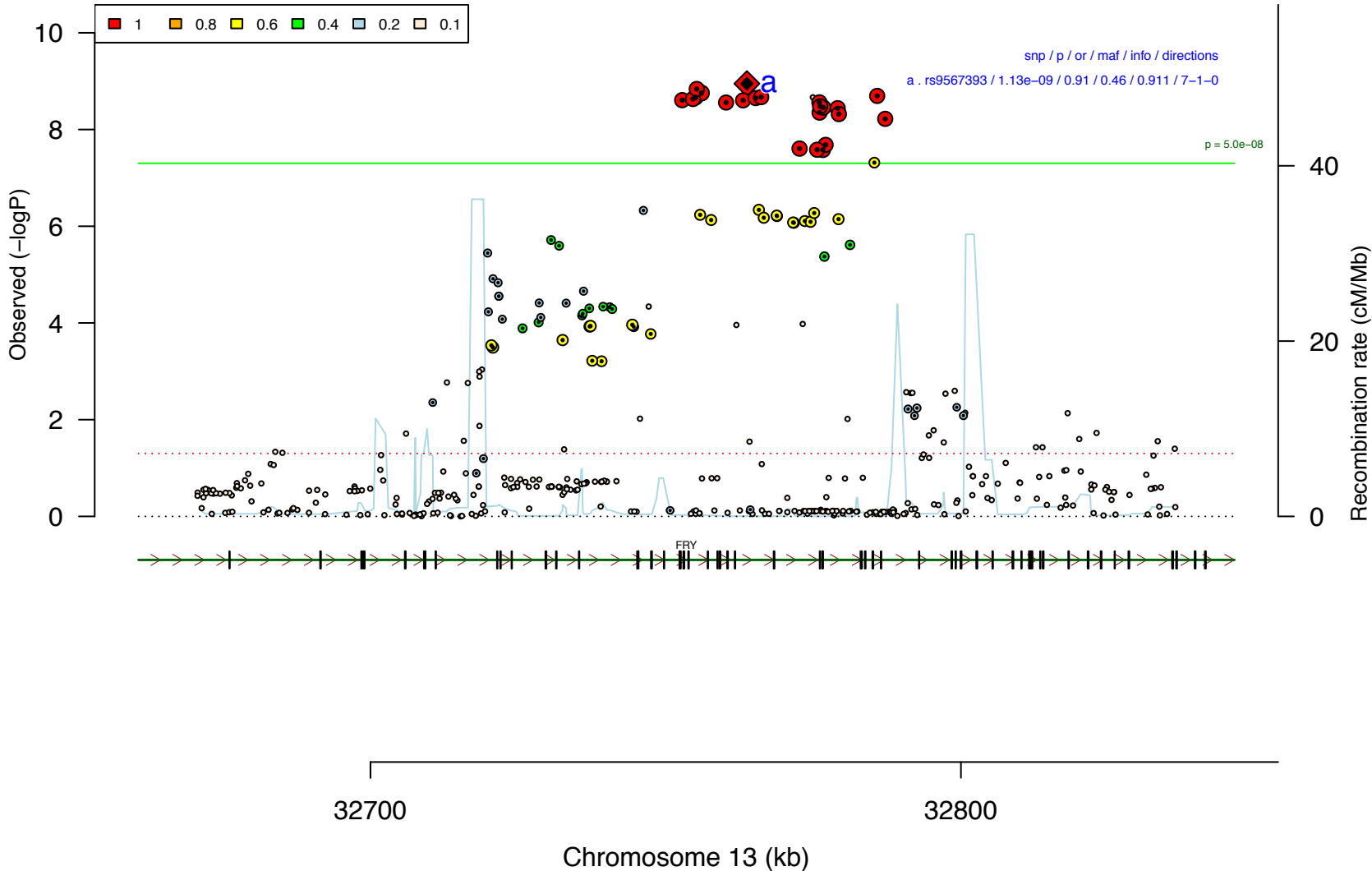
snp / p / or / maf / info / directions
a . rs10861879 / 1.18e-08 / 0.92 / 0.49 / 0.903 / 8-0-0



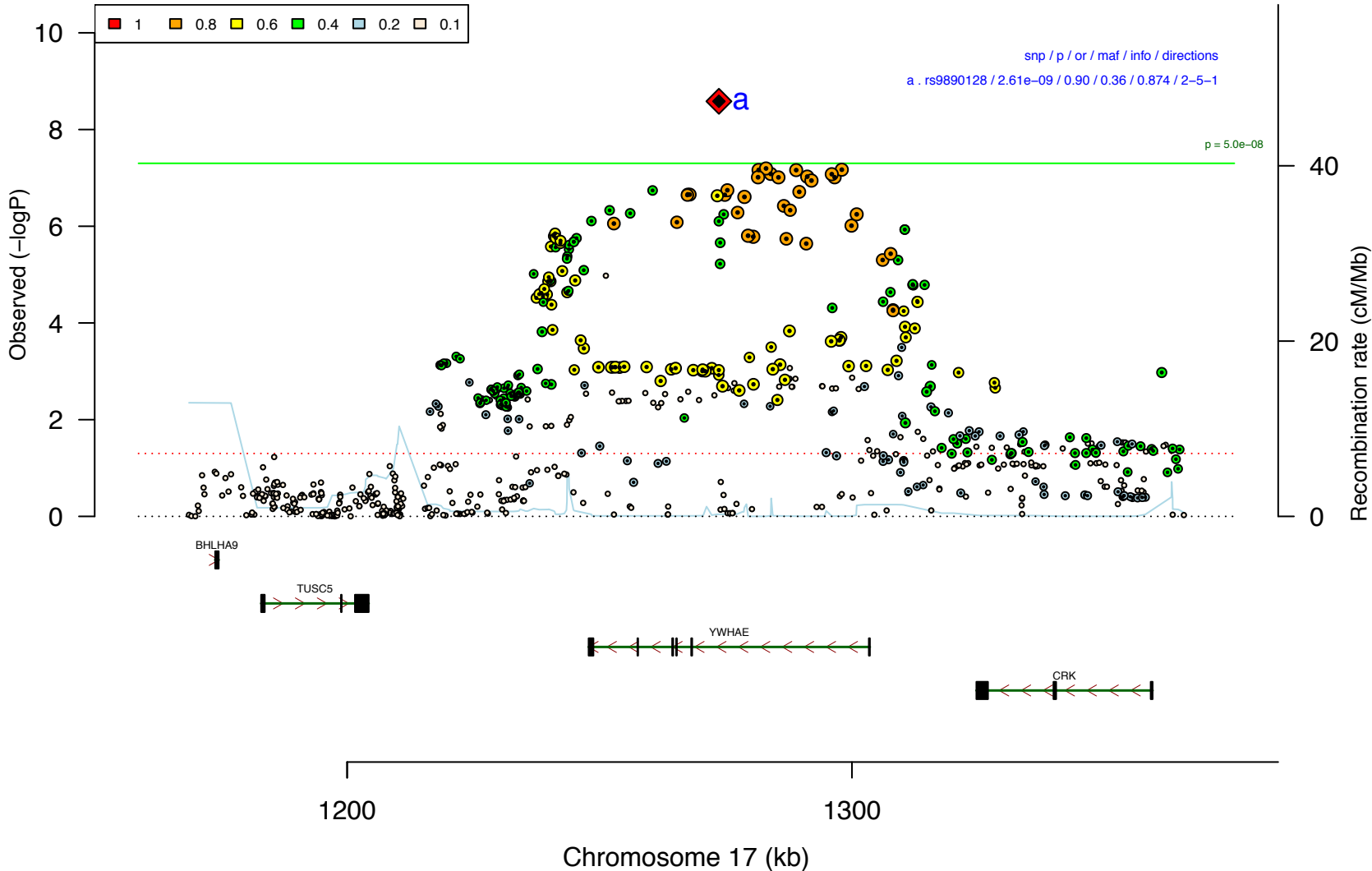
pgc_scz_asia_ASNstage12.15.chr12



pgc_scz_asia_ASNstage12.16.chr13



pgc_scz_asia ASNstage12.17.chr17



pgc_scz_asia_ASNstage12.18.chr18

