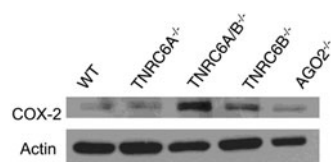


**SUPPLEMENTARY FIG. S5.** Cytoplasm and nucleus extraction in TNRC6AB double-knockout cells transfected with siTNRC6C. Proteins evaluated were calnexin, an ER protein, tubulin, a cytoplasm marker, and histone H3, a chromatin protein to show the purity of the extraction. ER, endoplasmic reticulum.

SUPPLEMENTARY TABLE S1. SMALL INTERFERING RNA SEQUENCE

SUPPLEMENTARY TABLE S2. QUANTITATIVE PCR PRIMERS SEQUENCE

SUPPLEMENTARY TABLE S3. SINGLE GUIDE RNAs AND PCR PRIMERS SEQUENCE



**SUPPLEMENTARY FIG. S6.** The basal level of COX-2 protein in different cell lines.