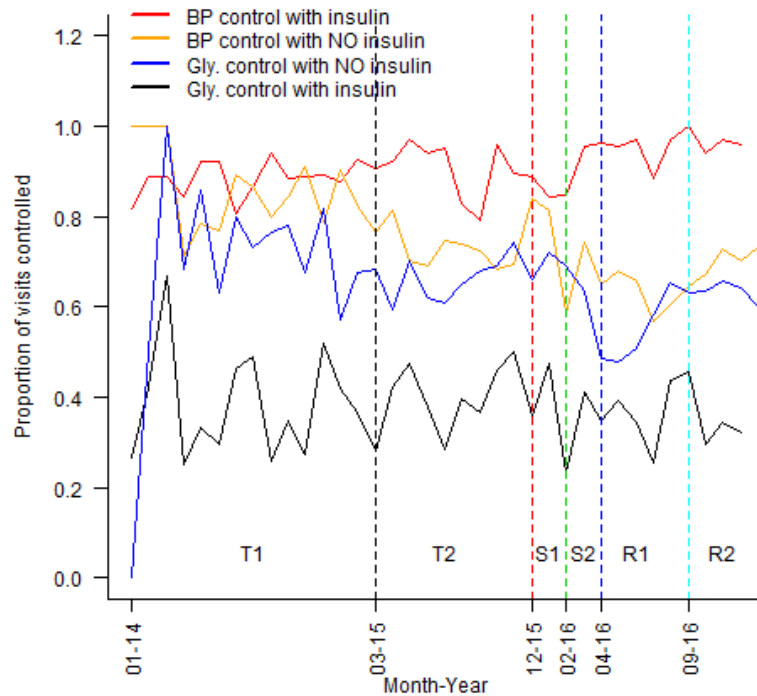


SM5. Proportion of visits at target for BP and glycaemic control, stratified by insulin prescription per month of IDC-OPD service, Mweso, DRC



Note: Patients were categorised by whether they were prescribed insulin [+/- oral hypoglycaemic (OHG) drugs] or OHG drugs alone at their last recorded visit. The former group would have included Type 1 diabetics, Type 2 diabetics with more advanced illness requiring a combination of OHG and insulin, and those with an intermediate type of diabetes, presenting with high insulin requirements in the absence of diabetic ketoacidosis, which we postulated represented “malnutrition-related diabetes”. The latter group were likely to include Type 2 diabetics.