

Table S1. Primers for fluorescence real-time quantitative PCR.

Gene	Forward (5'–3')	Reverse (5'–3')
<i>cviI</i>	GAAACCGTCCTCGCATAAGG	ACAAGGTGGACTGGTACTGG
<i>cviR</i>	CCCAGCAATATGCCGCTATC	CATTGAGCTTGCGGATCACA
<i>vioA</i>	AAGAGCATGGCAAGGAATC	CTGGTTGGCGTCGTTATC
<i>vioB</i>	CTGGGCGTAATTGGGAATGG	CAAATACCTGGCCCATGTCG
<i>vioC</i>	GAACAAGTACGCCAACCT	GGAAGAAAGTCTGCTGGAA
<i>vioD</i>	GCCGCAACAAGTACATCT	GAAGGTGCTCATCGTGTC
<i>vioE</i>	ATAGGCCACCTTCTGCTTCC	GGCTACTGCTGGTTCGACTA
<i>hmsH</i>	CGCCGTATGTCTTCAGTT	CGCAGCCTATCGTAGATG
<i>hmsF</i>	GGCTGCTGATTCTCTGTTA	GTATAGACGCTGCGGTAG
<i>hmsN</i>	AAACCACACGCACCAGAAC	TGCATGAGCATGAAGACGAC
<i>lasA</i>	AGCCAGCCTTACGATTCCAT	GAGGAATAGCCGTTGTCGTG
<i>lasB</i>	AGAACGCCTTGTTGTACACG	GCAAGAACGACTTCCTGGTC
<i>hcnA</i>	CTCCGTATTCAGACGGTTGC	ACTGCTGCCTGGTCAAGATA
<i>hcnB</i>	AATCTCTTCAGTCTGTTGGG	GATGTGCGTCGGCTATTG
<i>hcnC</i>	ATAGGTGATGGCGGTGTC	GTGCTGTCGGAGAAGATG
<i>PilE1</i>	CCTGCTGGAAGTGGTGAT	GCTGGCGTAGTTGTTGTT
<i>pilE2</i>	GAGCCGGTATAGGTGCAGTA	GTGAGCAGCATCAACGTTCT
<i>pilE3</i>	TACGCTGGTTCGAGTTGATGA	GCGAATAGCACTGCTCCATC
<i>rpoD</i> (actin)	TCGGACATCAGCAAGGTT	GTGAAGGACAGCCAACAG

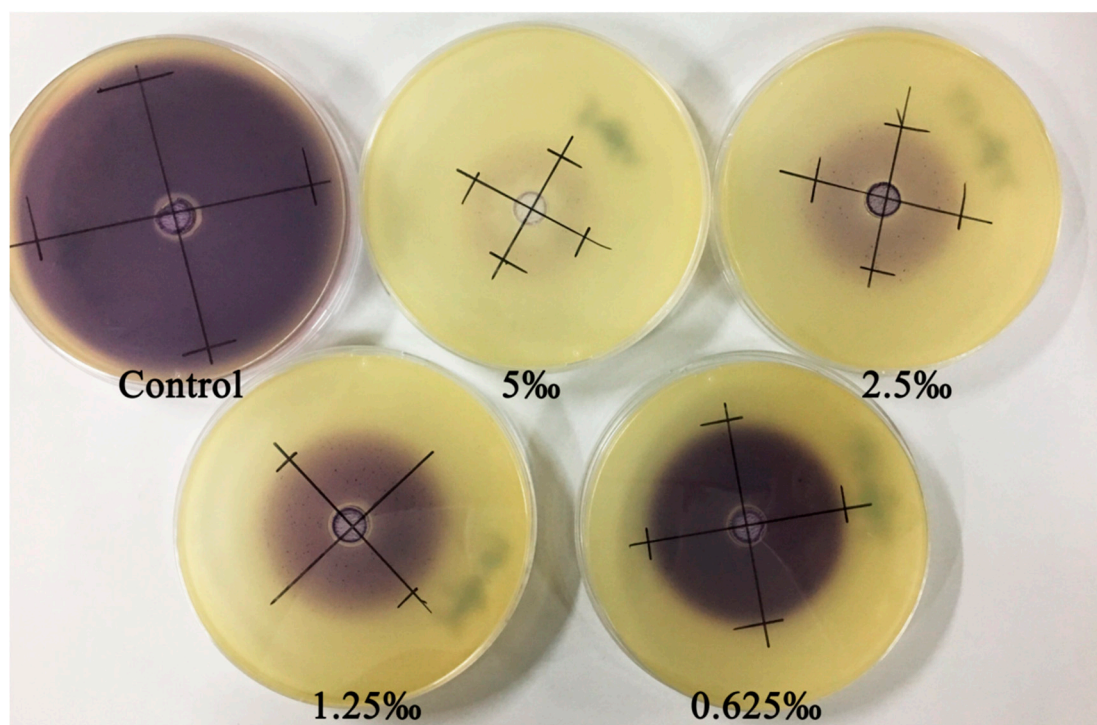
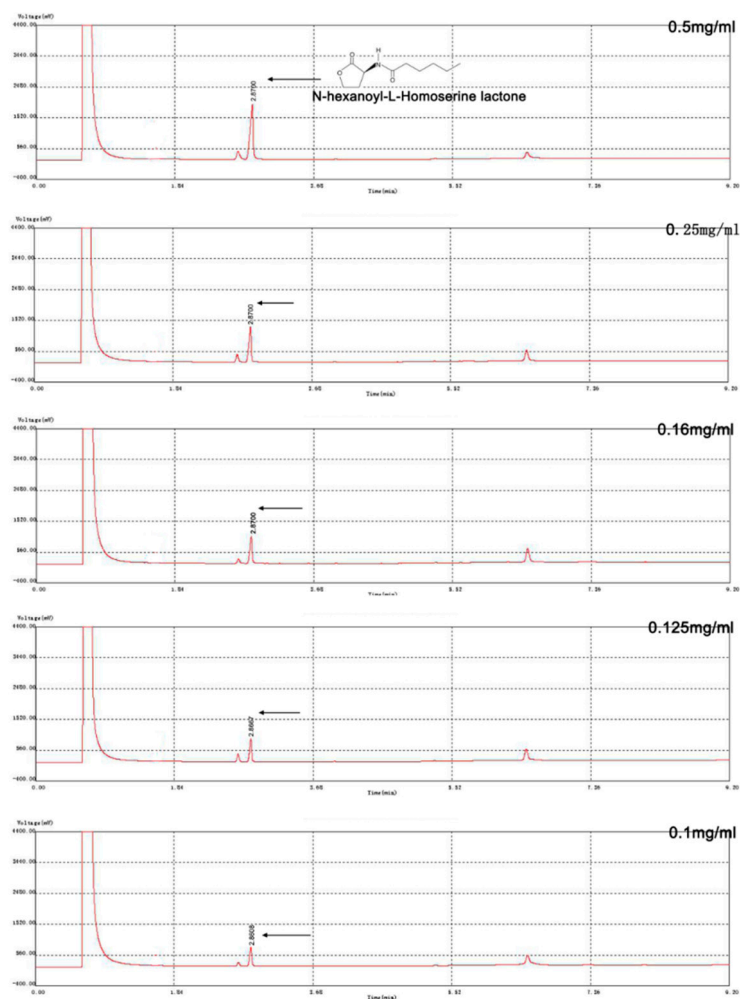


Figure S1. Induction of purple color production in CV026 by supernatants of *C. violaceum* culture grown in LB, untreated and treated with different concentrations of *M. bracteata* EO. Control (untreated with EO), 5‰, 2.5‰, 1.25‰, and 0.625‰.

A



B

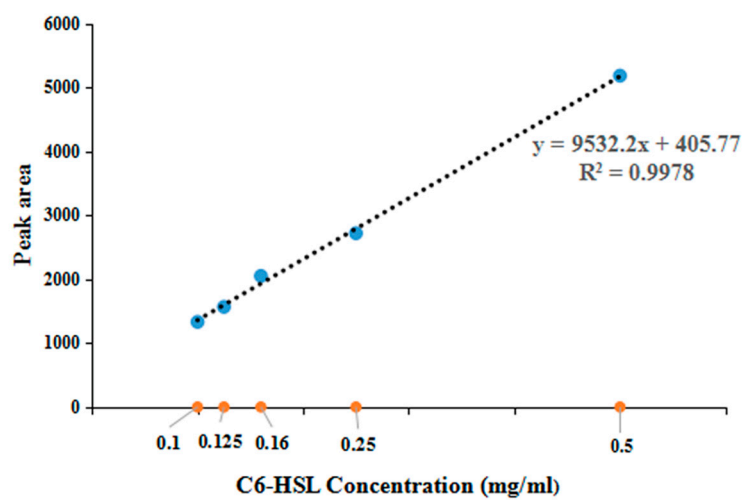


Figure S2. GC determination of the standard curve of C6-HSL (A). The standard curve of C6-HSL (B).

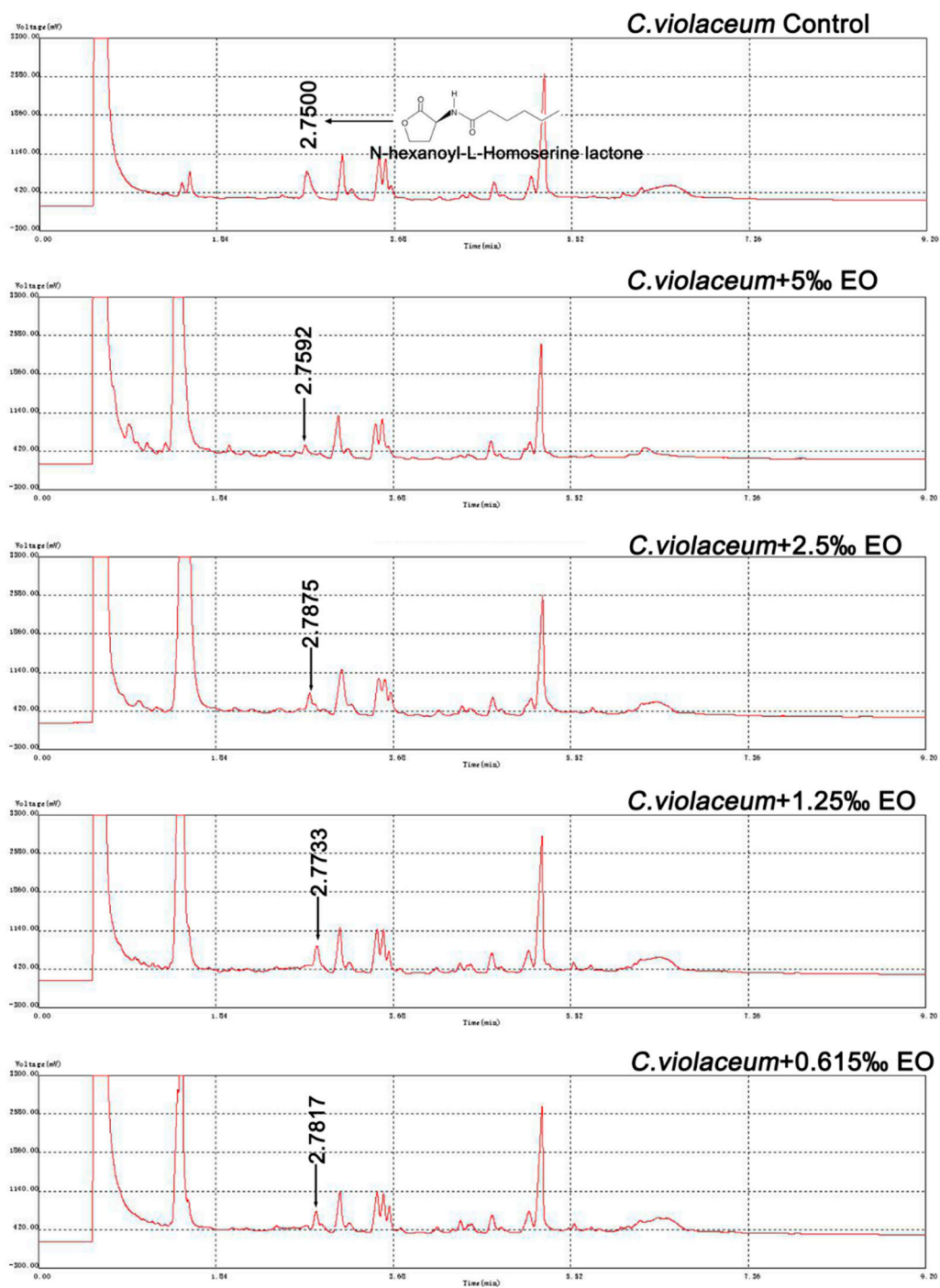


Figure S3. GC analysis of the effect of *M. bracteata* EO at different concentration (5‰, 2.5‰, 1.25‰, and 0.625‰) on C6-HSL production of *C. violaceum*.

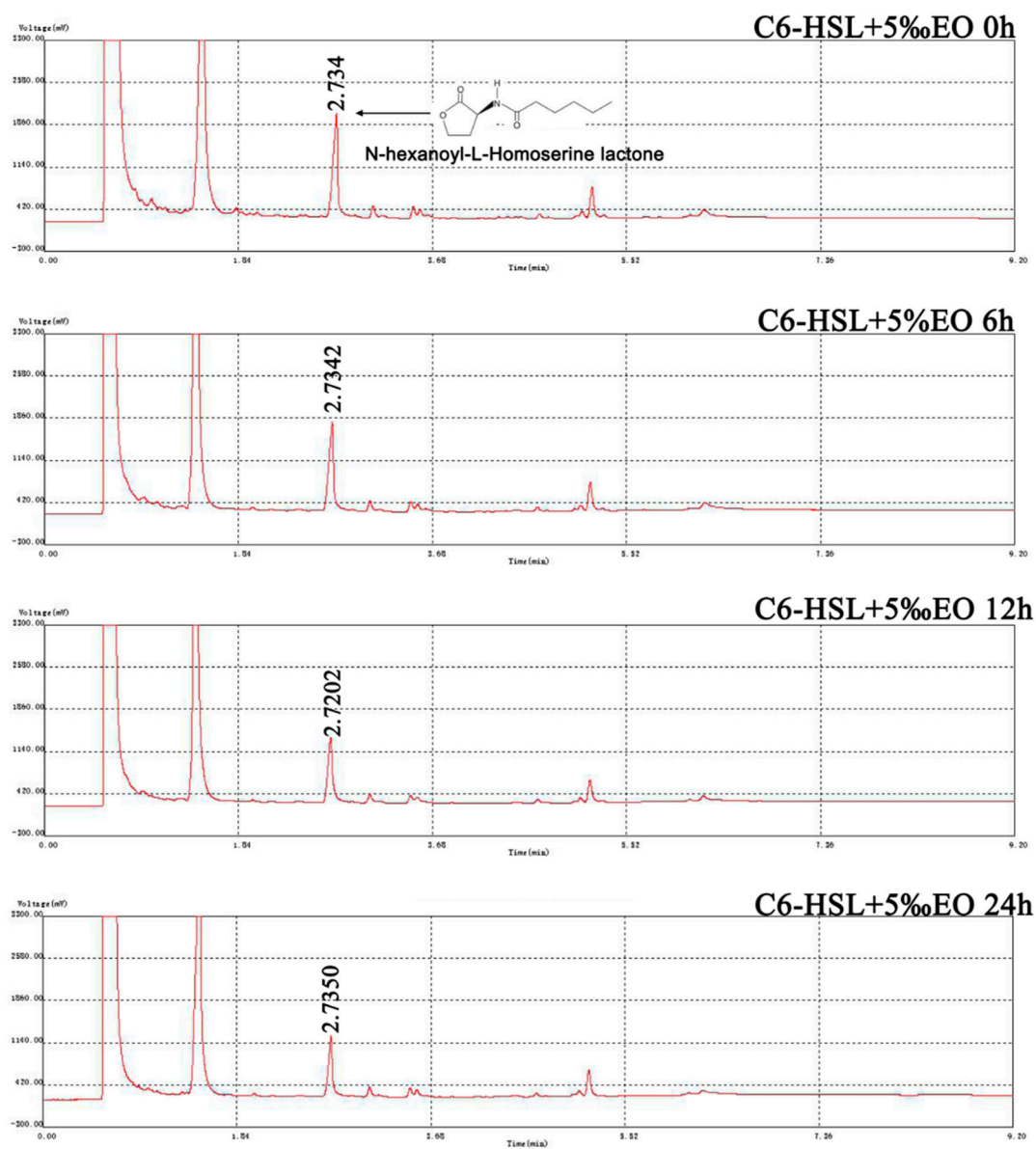


Figure S4. GC analysis of the effect of *M. bracteata* EO (5%) on C6-HSL treated for 0, 6, 12, and 24 h.

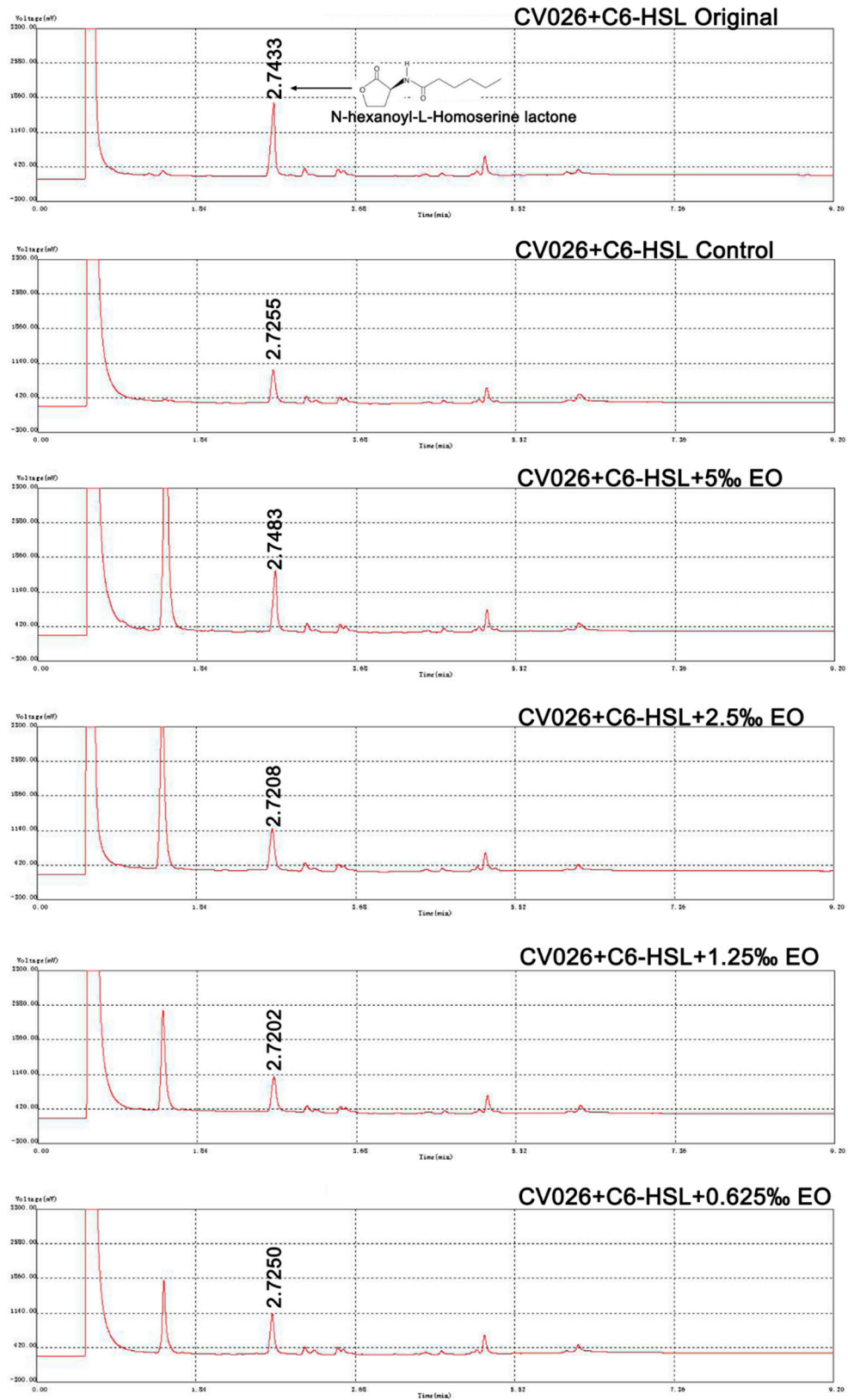


Figure S5. GC analysis of the effect of *M. bracteata* EO at different concentrations (5%, 2.5%, 1.25% and 0.625%) on C6-HSL of *C. violaceum* CV026.

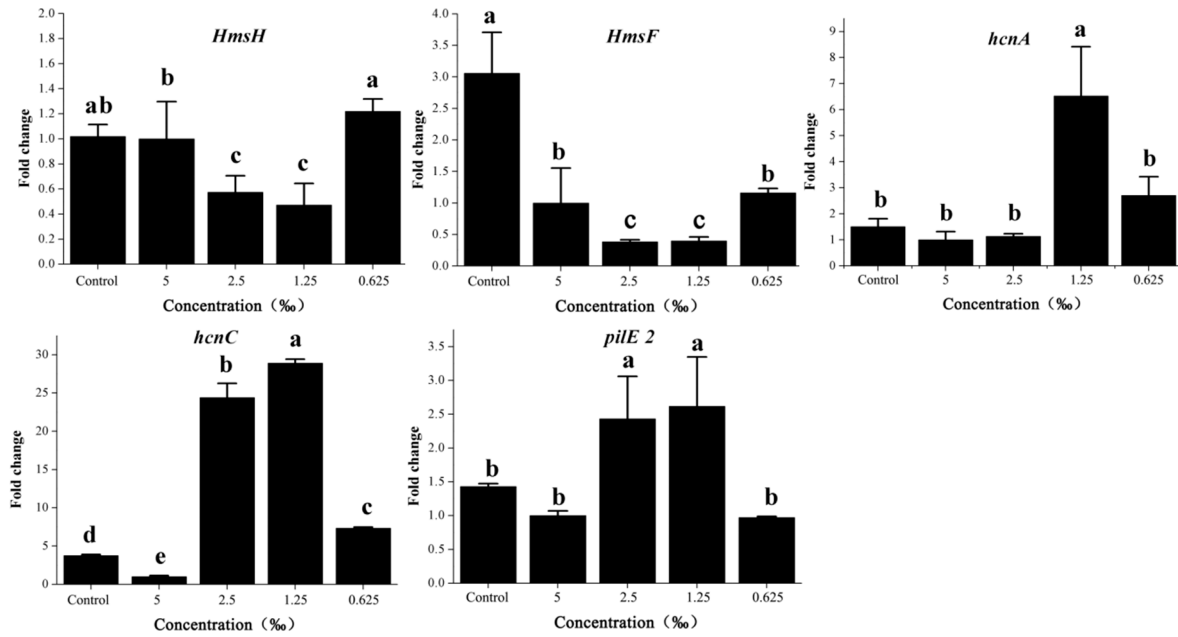


Figure S6. Effect of *M. bracteata* EO on the expression of virulence genes related to QS . *hmsH*, *hmsF*, *hcnA*, *hcnC* and *pilE2* were detected in response to *M. bracteata* EO treatment. Expression of the house-keeping gene *rpoD* was used as the internal control for each sample. The *M. bracteata* EO treatment concentrations were: 5‰, 2.5‰, 1.25‰, and 0.625‰. Control was untreated.

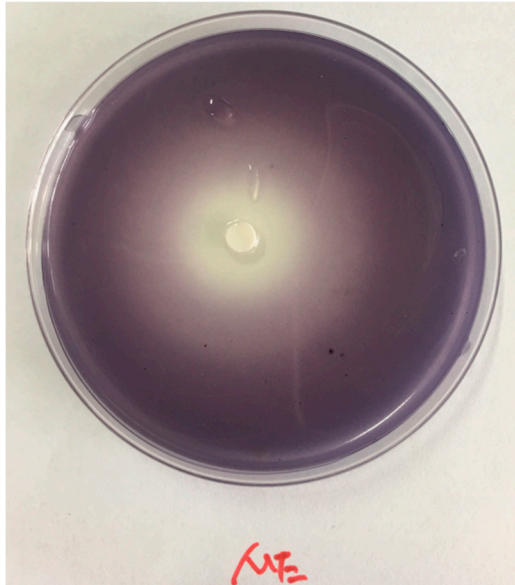


Figure S7. QSI effect of methyleugenol (ME) on biosensor CV026.