

Supporting Information

# Development and Biocompatibility of Collagen-based Composites enriched with Nanoparticles of Strontium containing Mesoporous Glass

Giorgia Montalbano <sup>1</sup>, Giorgia Borciani <sup>1,2</sup>, Carlotta Pontremoli <sup>1</sup>, Gabriela Ciapetti <sup>2</sup>, Monica Mattioli-Belmonte <sup>3</sup>, Sonia Fiorilli <sup>1</sup> and Chiara Vitale-Brovarone <sup>1,\*</sup>

<sup>1</sup> Applied Science and Technology Department, Politecnico di Torino, Corso Duca degli Abruzzi 24, 10129, Torino, Italy; giorgia.montalbano@polito.it (G.M.); giorgia.borciani@polito.it (G.B.); carlotta.pontremoli@polito.it (C.P.); sonia.fiorilli@polito.it (S.F.)

<sup>2</sup> Laboratorio di Fisiopatologia Ortopedica e Medicina Rigenerativa, IRCCS Istituto Ortopedico Rizzoli, 40136, Bologna, Italy; gabriela.ciapetti@ior.it

<sup>3</sup> Dipartimento di Scienze Cliniche e Molecolari, DISCLIMO, Università Politecnica delle Marche, 60100, Ancona, Italy; m.mattioli@univpm.it

\* Correspondence: chiara.vitale@polito.it; Tel.: +39-0110-904-716

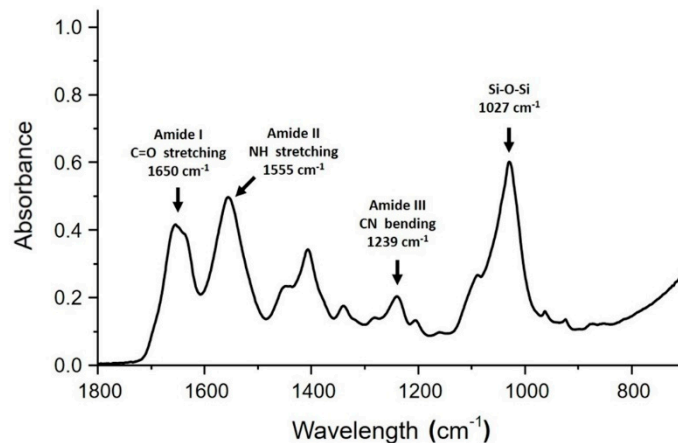


Figure S1. ATR-FTIR of Coll/MBG\_Sr4% hybrid system.

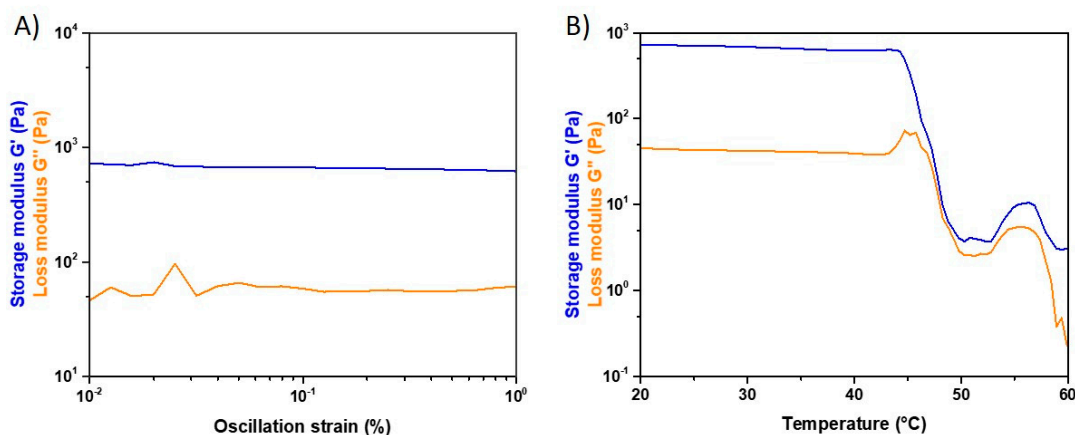
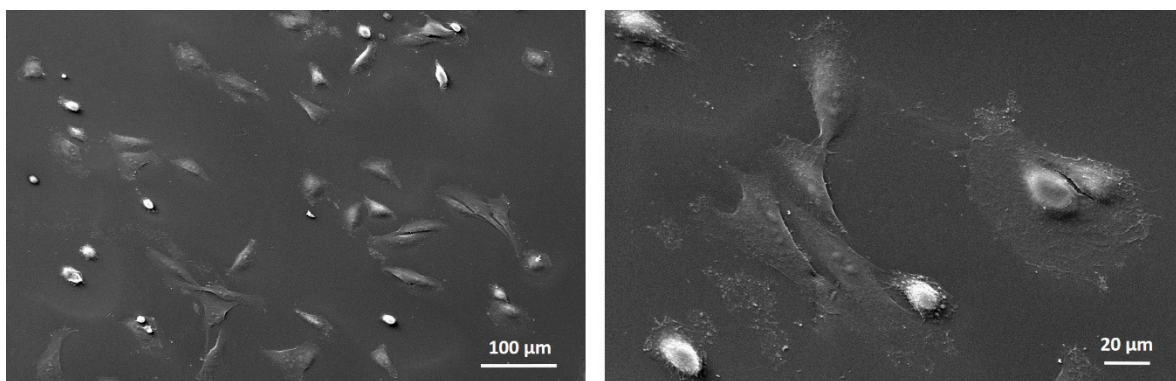
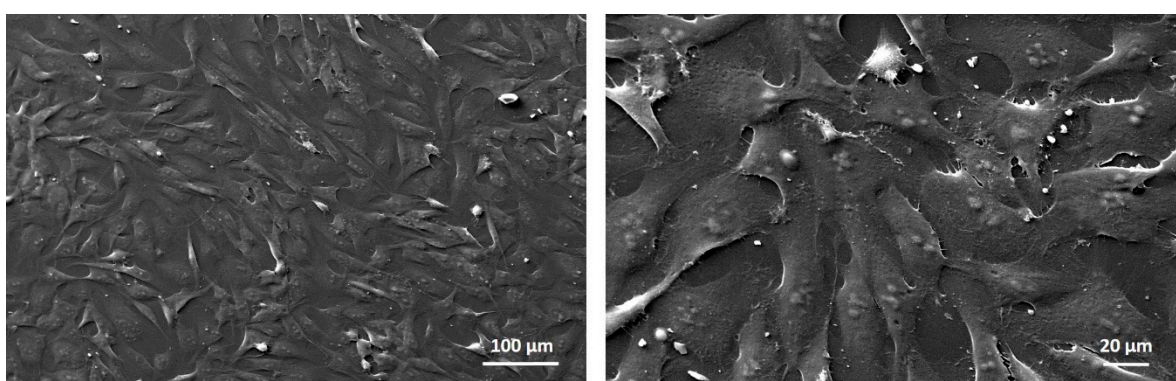


Figure S2. Amplitude sweep test (A) and temperature ramp (B) performed on 4-StarPEG crosslinked Coll/MBG\_Sr4% samples.



**Figure S3.** Morphology of control MG-63 seeded at  $1 \times 10^4$  onto standard TCPS 24-well plate and observed by SEM at 24 h. Scale bars are shown.



**Figure S4.** Morphology of control MG-63 seeded at  $2 \times 10^5$  onto standard TCPS 24-well plate and observed by SEM at 24 h. Scale bars are shown.