

Ambio

Electronic Supplementary Material

This supplementary material has not been peer reviewed.

**Title: Potential pathogen communities in highly polluted river ecosystems:
geographical distributions and environmental influences**

Authors: Yuzhan Yang^a, Yang Hou^{b*}, Min Ma^a, Aibin Zhan^{a,c}

^aResearch Center for Eco-Environmental Sciences, Chinese Academy of Sciences, 18

Shuangqing Road, Haidian District, Beijing 100085, China;

^bBeijing Dongcheng District Food and Drug Safety Monitoring Center, 12-14

Zhushikou Street East, Beijing 100050, China;

^cUniversity of Chinese Academy of Sciences, 19A Yuquan Road, Shijingshan District,

Beijing 100049, China.

Figure S1. A heatmap of environmental variables along North Canal River (NCR)

revised from Yang et al. (2019a).

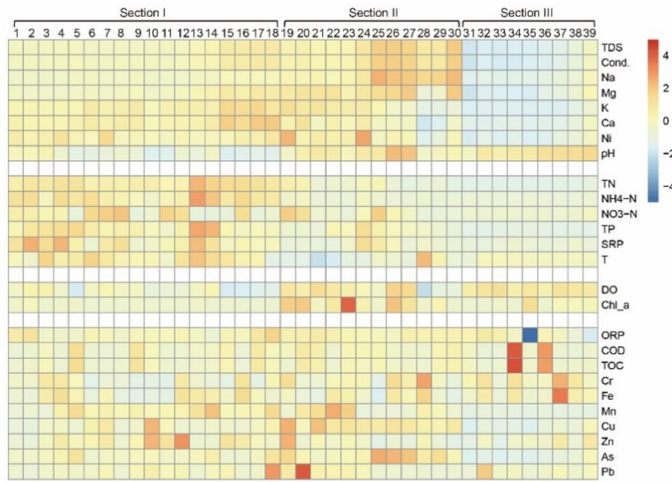


Table S1. The correlation between community of potential pathogenic bacteria and environmental / spatial variables selected out through forward selection. AdjR²Cum = adjusted cumulative R square.

	No.	Variables	AdjR ² Cum	<i>p</i> -value
Environmental factors	1	TN	0.347	0.000
	2	Cond	0.403	0.003
	3	pH	0.435	0.020
	4	TP	0.485	0.004
Spatial factors	1	V2	0.168	0.001
	2	V5	0.217	0.015
	3	V9	0.251	0.040