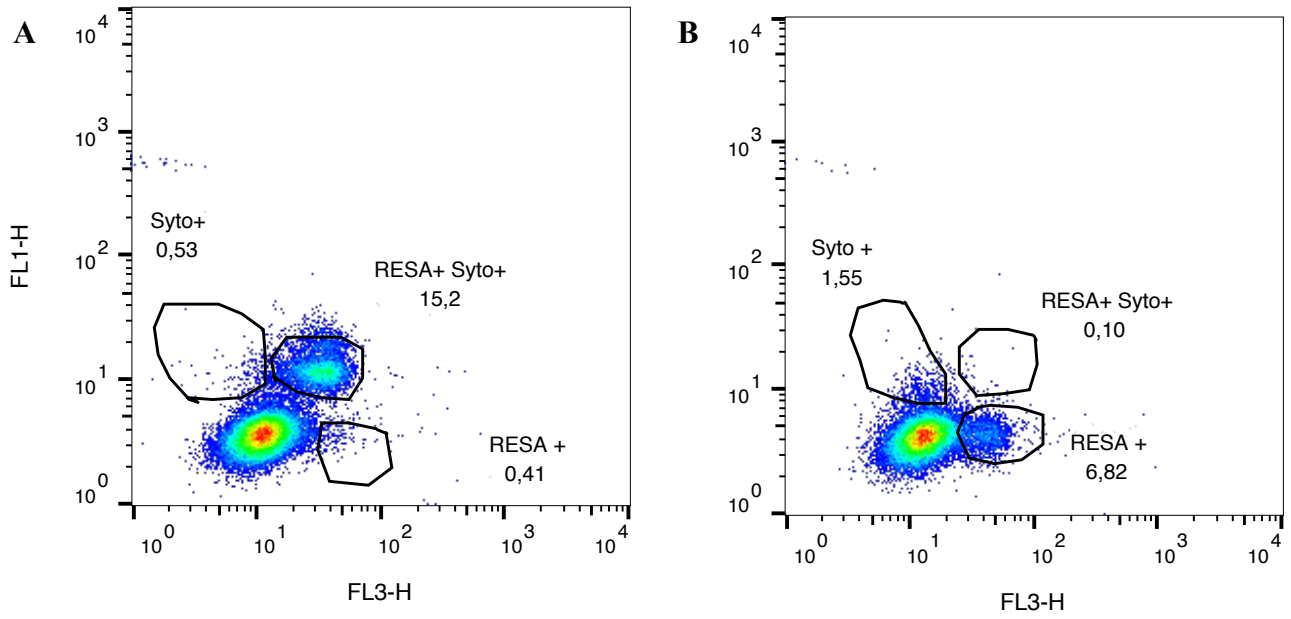


# **Determinants of post-malarial anemia in African children treated with parenteral artesunate**

*Authors:* Katrin Scheu, Ayola Akim Adegniko, Marylyn M. Addo, Daniel Ansong, Jakob P. Cramer, Svenja Fürst, Peter G. Kremsner, Florian Kurth, Thomas Jacobs, Jürgen May, Michael Ramharter, Justice Sylverken, Christof D. Vinnemeier, Tsiri Agbenyega, Thierry Rolling



**Supplementary Figure 1: Representative flow cytometry plots.** A) Sample from Day 0 with 15.2% infected RBCs (RESA+Syto+). B) Sample from the same patient from Day 2 with 6.82% once-infected RBCs (RESA+Syto-).