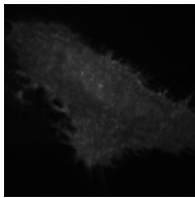
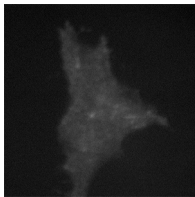


## Supplemental material

Gomez et al., <https://doi.org/10.1083/jcb.201902184>



Video 1. Confocal Z-series of the HeLa cell shown in Fig. 8 E expressing PM-GBP, GFP-R1441G LRRK2, and Myc-Rab10 to illustrate the localization of plasma membrane-anchored LRRK2 detected in the GFP channel. The video was created at 3 frames per second.



Video 2. Confocal Z-series of the A549 Rab10 knockout cell shown in Fig. 9 B expressing GFP-R1441G LRRK2, Myc-GBP, and PM-Rab10 to illustrate the localization of plasma membrane-anchored Rab10 distribution detected in the 647-nm channel. The video was created at 3 frames per second.