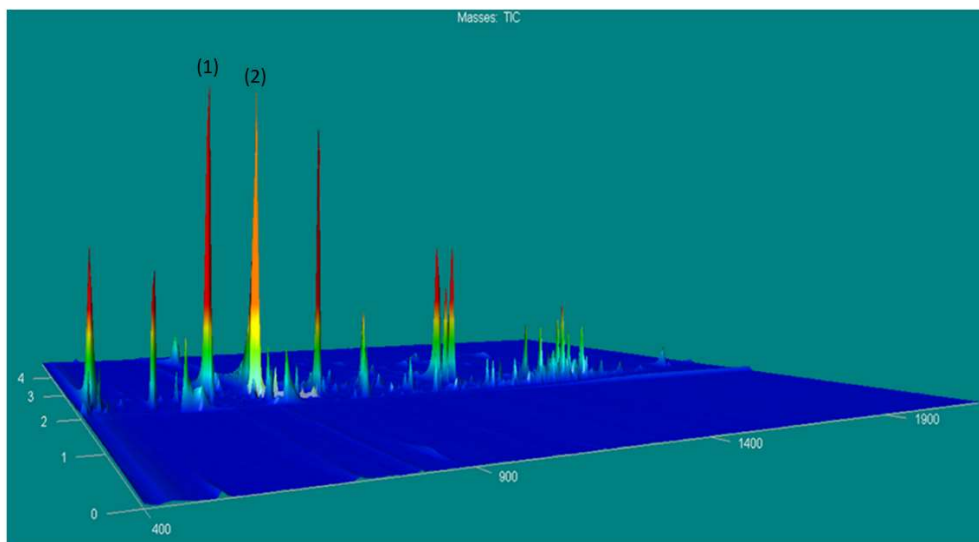
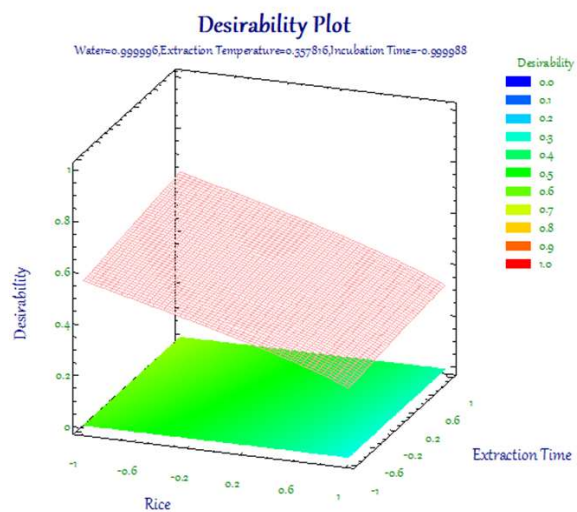


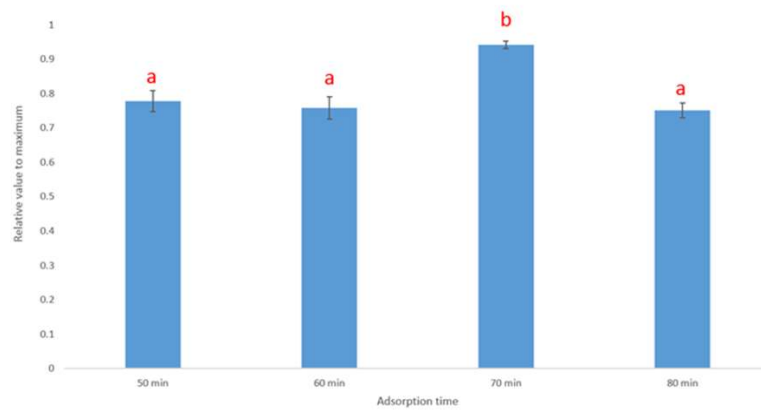
## Supplementary Materials



**Figure S1.** 2-acetyl-1-pyrroline (1) and internal standard 2,4,6-trimethylpyridine (2) in Pandan Leaf.



**Figure S2.** Response surface plots showing the effects of variables ( $x_1$ , sample amount;  $x_2$ , adsorption time) on the extraction yield.



**Figure S3.** Relative amount of extracted compounds in different adsorption times.