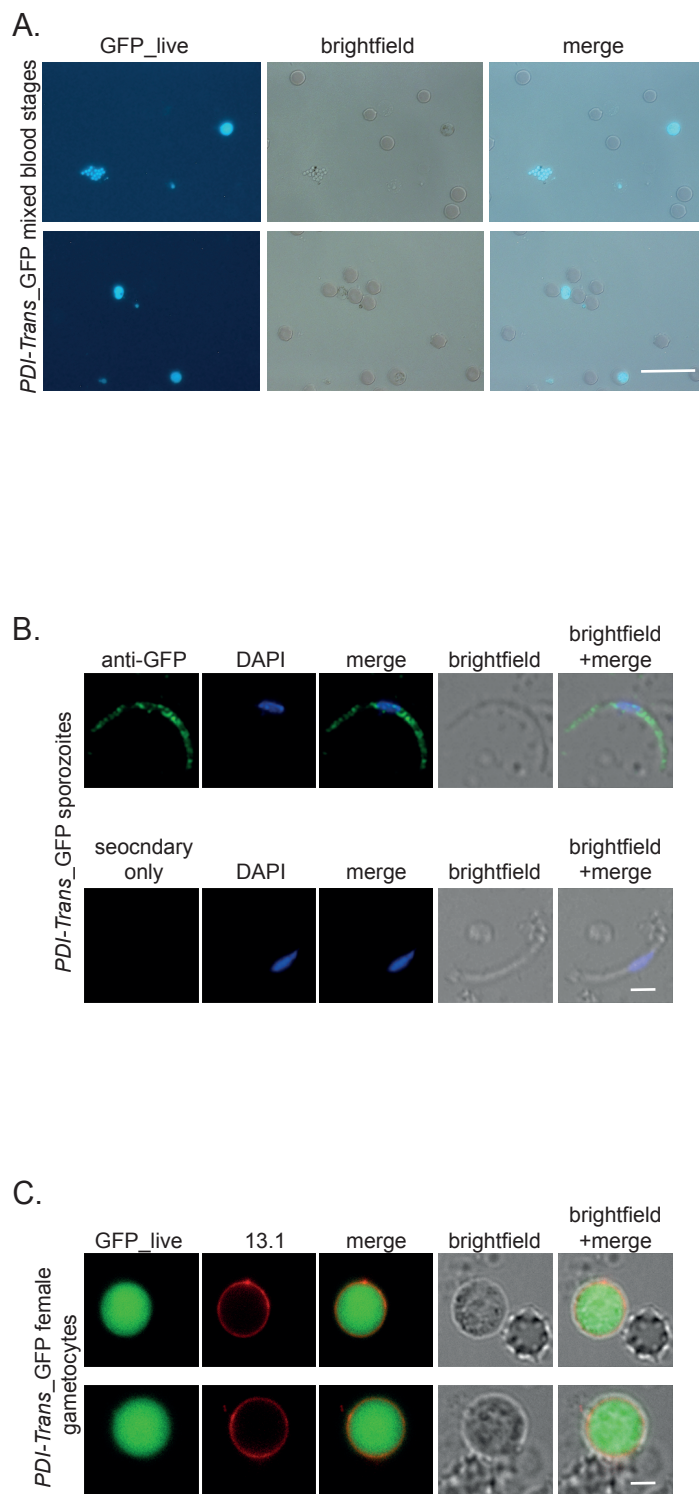


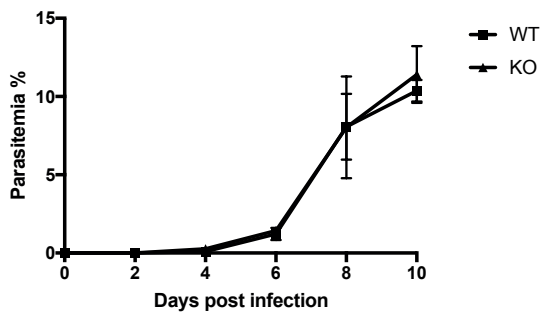
Male-Specific Protein Disulphide Isomerase Function is Essential for *Plasmodium* Transmission and a Vulnerable Target for Intervention

Fiona Angrisano¹, Katarzyna A. Sala², Sofia Tapanelli², George K. Christophides², Andrew M. Blagborough^{1, 2, 3*}

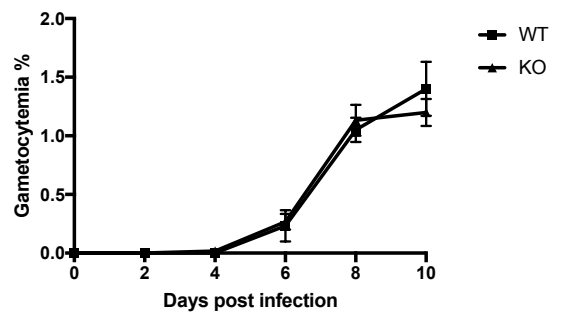


S2.

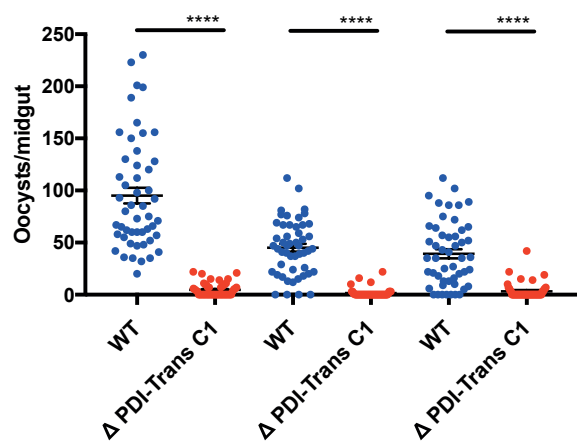
A.



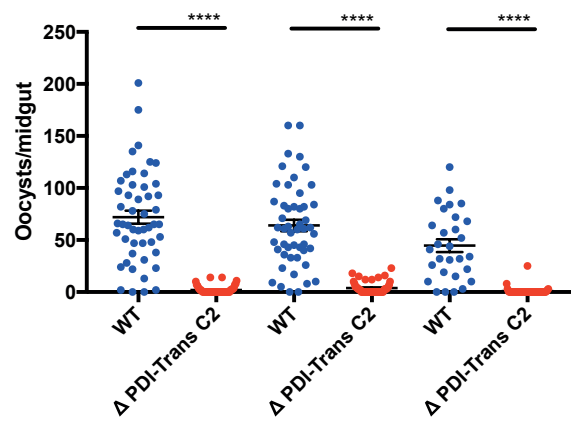
B.

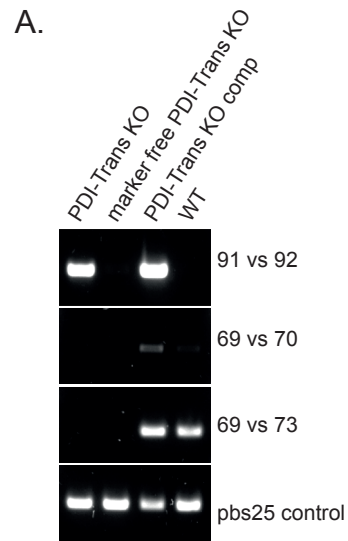


A.

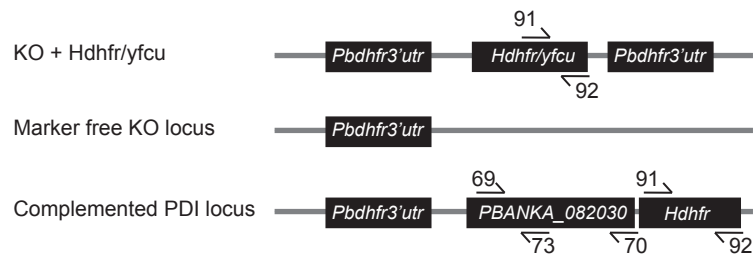


B.





B.



1 **Supplemental Figure S1.**

2 **A).** Live GFP fluorescence of mixed blood stage *P. berghei* *PDI-Trans-GFP* parasites. Scale
3 bar = 15 μm . **B).** IFA of fixed, non-permeabilised *PDI-Trans-GFP* salivary gland sporozoites
4 probed with either anti-GFP (top) or secondary only (bottom). Each panel shows an overlay
5 of GFP fluorescence (green) and DNA labelled with DAPI (blue). Scale bar = 5 μm . **C).** Live
6 GFP fluorescence of *P. berghei* female gametocytes. Parasites were incubated with anti-
7 Pbs28 Cy3 conjugated surface antibodies 13.1 prior to imaging as a co-stain for activated
8 female gametes. Scale bar = 5 μm .

9

10 **Supplemental Figure S2.**

11 **A).** Asexual growth and **B).** gametocyte production of WT and Δ *PDI-Trans* parasites strains.
12 Three independent experiments are plotted.

13

14 **Supplemental Figure S3.**

15 Mice infected with **A).** Δ *PDI-Trans* clone 1 (C1) or **B).** Δ *PDI-Trans* clone 2 (C2) *P. berghei*
16 parasites and DFA performed to determine transmission blockade. Individual data points
17 represent the number of oocysts found in individual mosquitoes 12 days post feeding.
18 Horizontal bars indicate mean intensity of infection, while error bars indicate SEM within
19 individual samples. Asterisks indicate P value < 0.05 Mann-Whitney U test.

20

21 **Supplemental Figure S4**

22 **A).** Genotyping data for Δ *PDI-Trans*, Δ *PDI-Trans* marker-free and Δ *PDI-Trans* Comp lines.

23 **B).** Schematic of for Δ *PDI-Trans*, Δ *PDI-Trans* marker-free and Δ *PDI-Trans* Comp lines and
24 primer pairs used for genotyping.

25

26