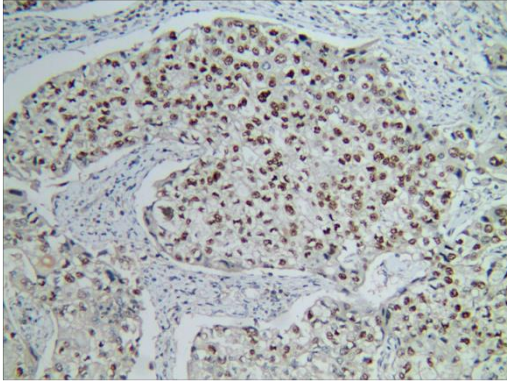


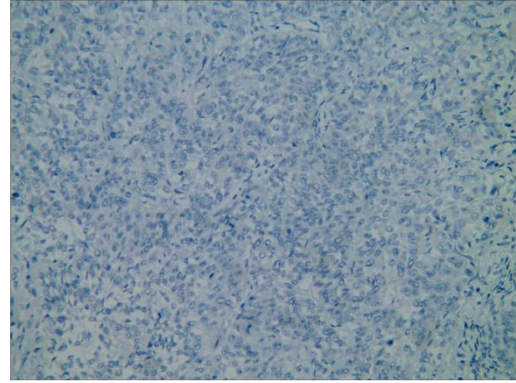
Figure S1

A



Bladder cancer

B



Normal tissue

Figure S1 Immunohistochemistry staining was performed to detect the expression of ZEB2 in the bladder cancer and normal tissues.

The representative analytic results of ZEB2 immunohistochemistry staining of formalin-fixed, paraffin-embedded human bladder cancer tissue(A) and their paired adjacent noncancerous tissues from the same patient (B). (DAB staining, original magnification $\times 100$).