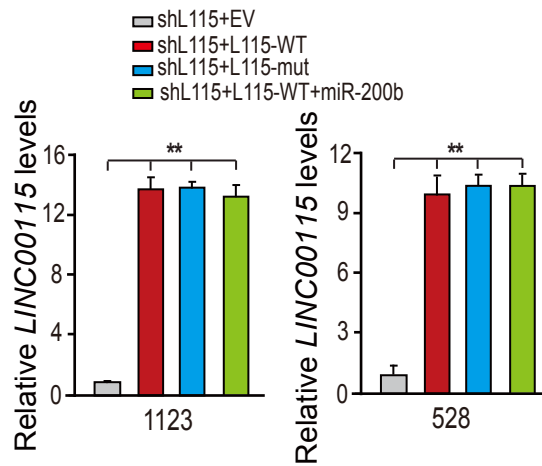
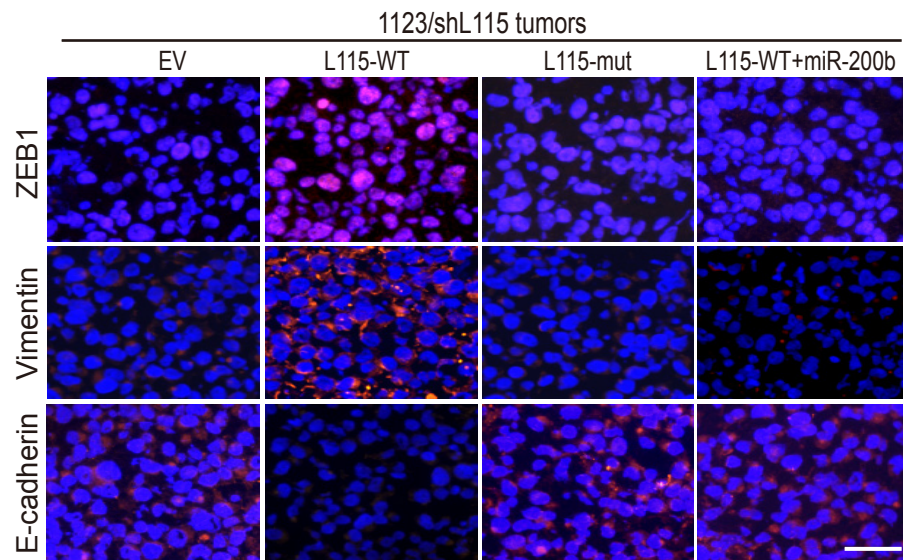


## Table of Contents

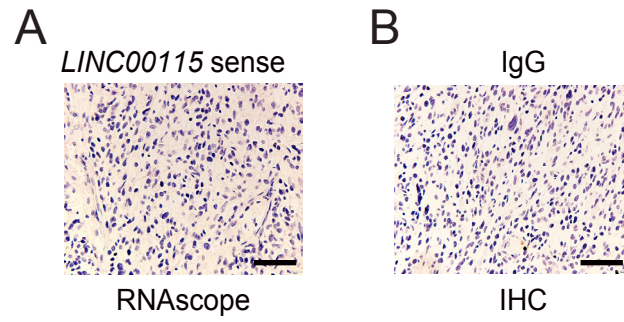
Appendix Fig S1	2
Appendix Fig S2	3
Appendix Fig S3	4
Appendix Table S1	5



**Appendix Fig S1** qRT-PCR analysis of shRNA-resistant LINC00115 wild type or mutant with or without miR-200b overexpression in 1123/shL115 and 528/shL115 GSCs. Data are representative of three independent experiments. Error bars,  $\pm$  SD. \*\*,  $p < 0.01$ , by One-way ANOVA.



**Appendix Fig S2** Corresponding to Figures 4G. Immunofluorescence (IF) analysis of protein expression of ZEB1, vimentin, and E-cadherin in tumors from Figures 4G. Images are representative of two independent experiments. Scale bars: 50  $\mu$ m.



**Appendix Fig S3** Representative images of a RNAscope control with *LINC00115* sense and a IHC control with IgG in a paraffin-embedded clinical GBM samples. Images are representative of two independent experiments. Scale bar, 50  $\mu$ m.

**Appendix Table S1** Primers for DNA constructs and qRT-PCR

lentiCRIPSR-ZNF596-1	F: CACCGGTCTACAATGATATCCTCGA R: AAACCTCGAGGATATCATTGTAGACC
lentiCRIPSRv2GFP-ZNF596-2	F: CACCGACCGGATTCCATGACCTTCG R: AAACCGAAGGTCATGGAATCCGGTC
pCDNA3- ZNF596	F: CAGTGTGCTGGAATTCATGCCATCA CCGGATTCCATGAC R: CTAGATGCATGCTCGAGTTACATAT TCATTGCTTTTTTAG
pLVX-ZNF596 primers:	F: CCGGACTCAGATCTCGAGATGCCA TCACCGGATTCCATGAC R: CCGTCGACTGCAGAATTCTTACATAT TCATTGCTTTTTTAG
ZNF596 shRNA #1	F: TGGACACATCCCAGAGAAAGCTCGAAAGCTTTC TCTGGGATGTGTCTTTTC R: TCGAGAAAAGGACACATCCCAGAGAAAGCTTTC GAGCTTTCTCTGGGATGTGTCCA
ZNF596 shRNA #2	F: TGGCAAACAGCTCTGCAAATCACGAATGATTTG CAGAGCTGTTTGCTTTTC R: TCGAGAAAAGGCAAACAGCTCTGCAAATCATTC GTGATTTGCAGAGCTGTTTGCCA
pCDNA3- LINC00115	F: GACTGAGTCGCCCGGATCCGACCCGGAAACGG ATTATC R: GTCGAGGCCTGCAGGAATTCTATCTTTGAGCAAT TTAT
pLVX- LINC00115	F: CCGGACTCAGATCTCGAGACCCGGAAACGGAT TATC R: CCGTCGACTGCAGAATTCTATCTTTGAGCAATTTA T
LINC00115 shRNA #1	F: TGCATGTGGCTTGTCTTCCATCCGAAGATGGA AGACAAGCCACATGCTTTTC R: TCGAGAAAAGCATGTGGCTTGTCTTCCATCTTCG GATGGAAGACAAGCCACATGC
LINC00115 shRNA #2	F: TACCCTCGTGCTTCTGCACAATCGAAATTGTGCA GAAGCACGAGGGTTTTTC R: TCGAGAAAACCCTCGTGCTTCTGCACAATTTCTGA TTGTGCAGAAGCACGAGGGT

pCDNA3-LINC00115-mut(200b/c)	191 to 213bp F: GAGTTTGTTTAATATTCAACAGCTTC CTCTATTCCTTTGTATG R: GTTGAATATTAACAAACTCAAATCAT CAATATCCTTACGGAGTG 648 to 665bp F: GGGCTTCTTAATTGACTCGCTGTGG ATGTCGAGGTGGG R: CCACAGCGAGTCAATTAAGAAGCCC CTGCCAAGGAGG
pCDNA3-LINC00115-mut (sh115-2)	F: ACCCTCGTACTTCTACACAATCGCCTCC CACTAGCGGTG R: GCGATTGTGTAGAAGTACGAGGGTT GTTACAGGATCGGGC
pCDNA3.3-Flag-MS2	F: AGAGAATTCGGATCCGGAATTGATCCGC GGCCGCGCATG R: CTTCCATGGCTCGAGGGTGGTGATG ATGGTTAATTAAGG
pLVX-Flag-MS2	F: CCGGACTCAGATCTCGAGCCAGCCTCCGGACT GAGCTCC R: GTAGAATTATCTAGAGGTGGTGATGAGGTTAAT TAAGG
pcDNA3-LINC00115-MS-12X	F: ATAAATTCGTCAAAGGGATCCTAAGGTACCTAA TTG R: CTCTAGATGCATGCTCGAGGATCTAATGAACC CGGGA
<i>LINC00115</i> qRT-PCR	F: AGCGGTGACTGTTGGGTG R: CATCCACAGCGAGGCAAT
<i>ZEB1</i> qRT-PCR	F: GGCATACACCTACTCAACTACGG R: TGGGCGGTGTAGAATCAGAGTC
<i>ZNF596</i> qRT-PCR	F: ACCGGATTCCATGACCTTCG R: CTCTGGGATGTGTCCAGCAG
<i>EZH2</i> qRT-PCR	F: AATCAGAGTACATGCGACTGAGA R: GCTGTATCCTTCGCTGTTTCC
<i>ACTB</i> qRT-PCR	F: CATGTACGTTGCTATCCAGGC R: CTCCTTAATGTCACGCACGAT

ChIP-qPCR,EZH2	<p>-1934 to -1725bp F: CAGCTCATCGGGAGGCTGAG R: AGGTCACCTATGAACTGTTG</p> <p>-1425 to -1201bp F: GGGTTCACGCCATTCTCCTG R: GCAAAGTGTGAGGATATTTG</p> <p>-896 to -751bp F: GACCAAGACCCGTCTCTACT R: TGGTTGTCCAGGCTGGAGT</p> <p>-630 to -421bp F: GAGCCGACCTCCGGGGCCCG R: GGC GGGACGAAGCGCCGGC</p> <p>-235 to -5bp F: GGCGTCCCTTACAGCGAAC R: GCGCCAAACGCGGCAGCCC</p>
----------------	--