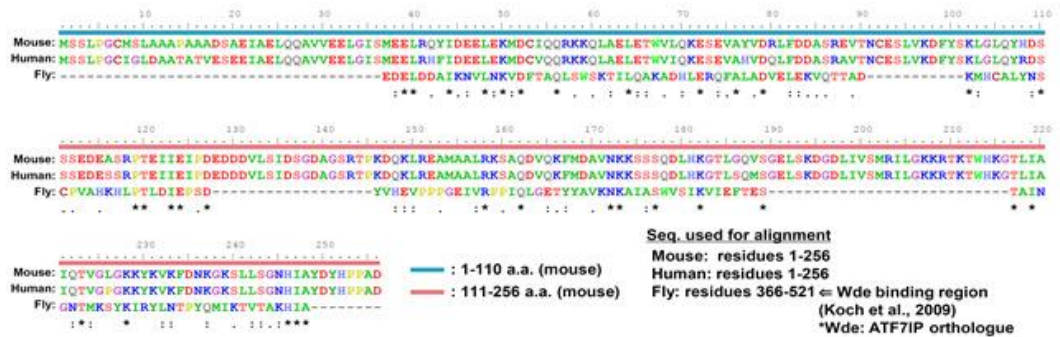


## **Appendix**

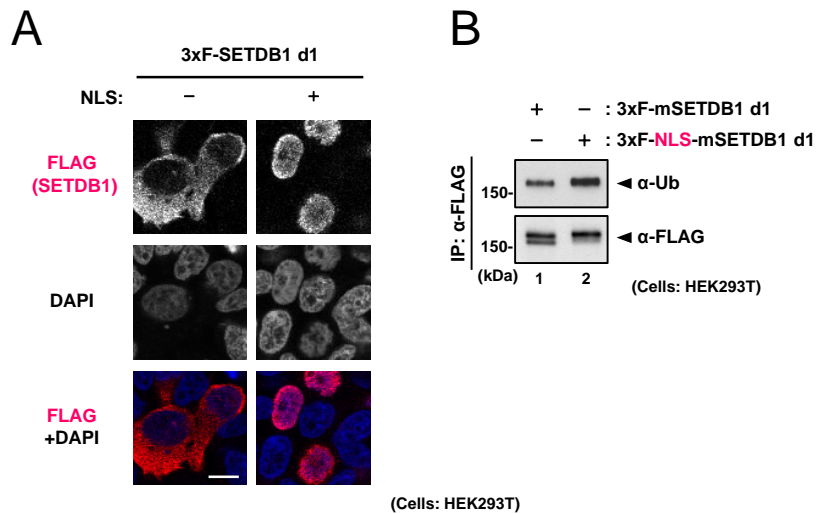
**Table of contents:**

**Appendix Figure S1: SETDB1 sequence alignment:** p2

**Appendix Figure S2: Nuclear localization itself promotes the ubiquitination of SETDB1 d1 mutant:** p3



Appendix Fig. S1 SETDB1 sequence alignment



## Appendix Figure S2: Nuclear localization itself promotes the ubiquitination of SETDB1 d1 mutant

**A** HEK293T cells were transfected with either 3xF- or 3xF-NLS-SETDB1 d1. The representative data of two independent experiments is shown. Scale bar: 10  $\mu$ m.

**B** HEK293T cells were transfected with 3xFLAG- or 3xFLAG-NLS-SETDB1 d1. After FLAG-IP, the purified SETDB1s were analyzed by WB.