

Supplementary Materials:

Intake of processed meat and associations with sociodemographic and lifestyle factors in a representative sample of the Swiss population.

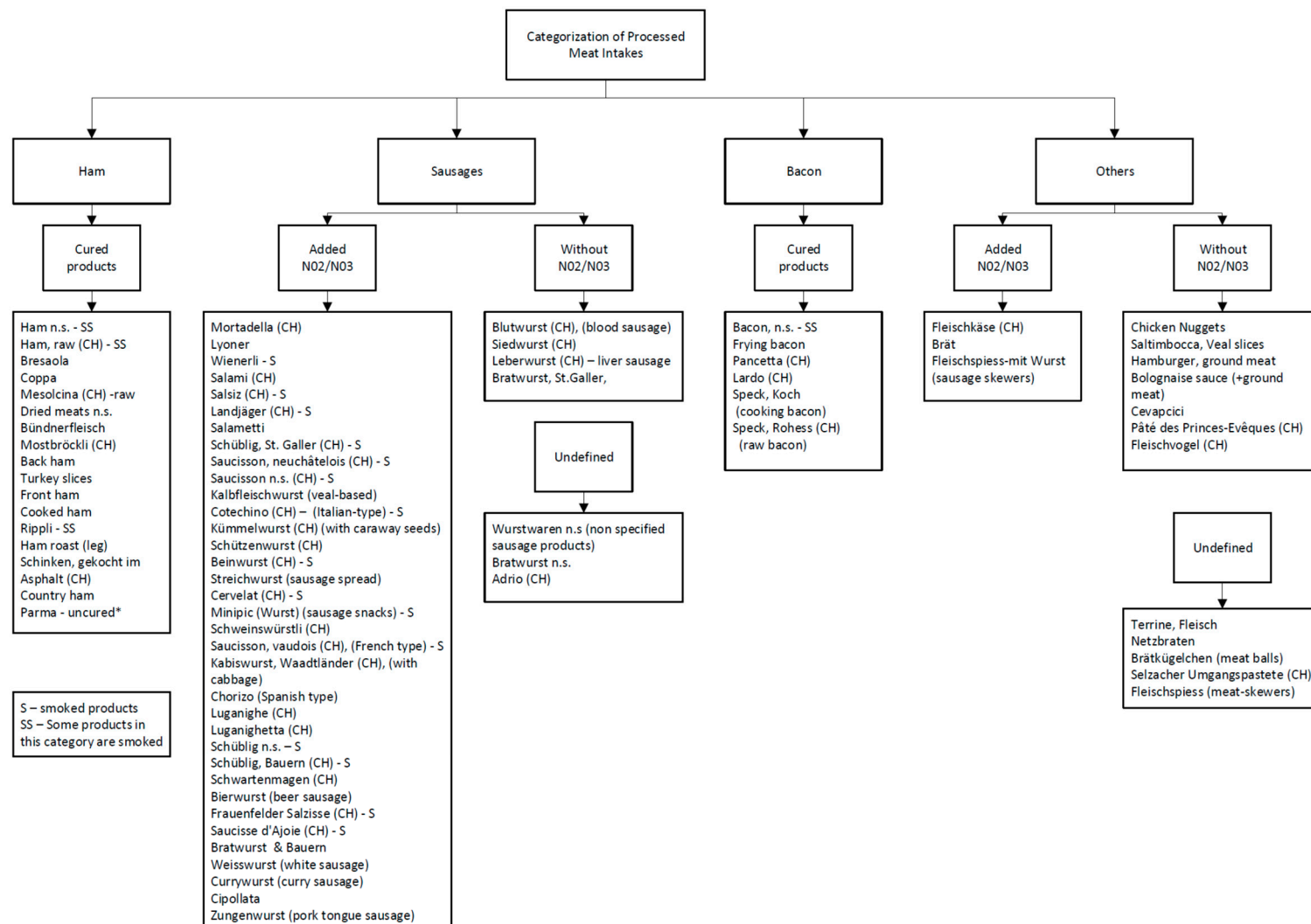


Figure S1. Categorization of processed meat consumptions, National Nutrition Survey menuCH, N=2,057.

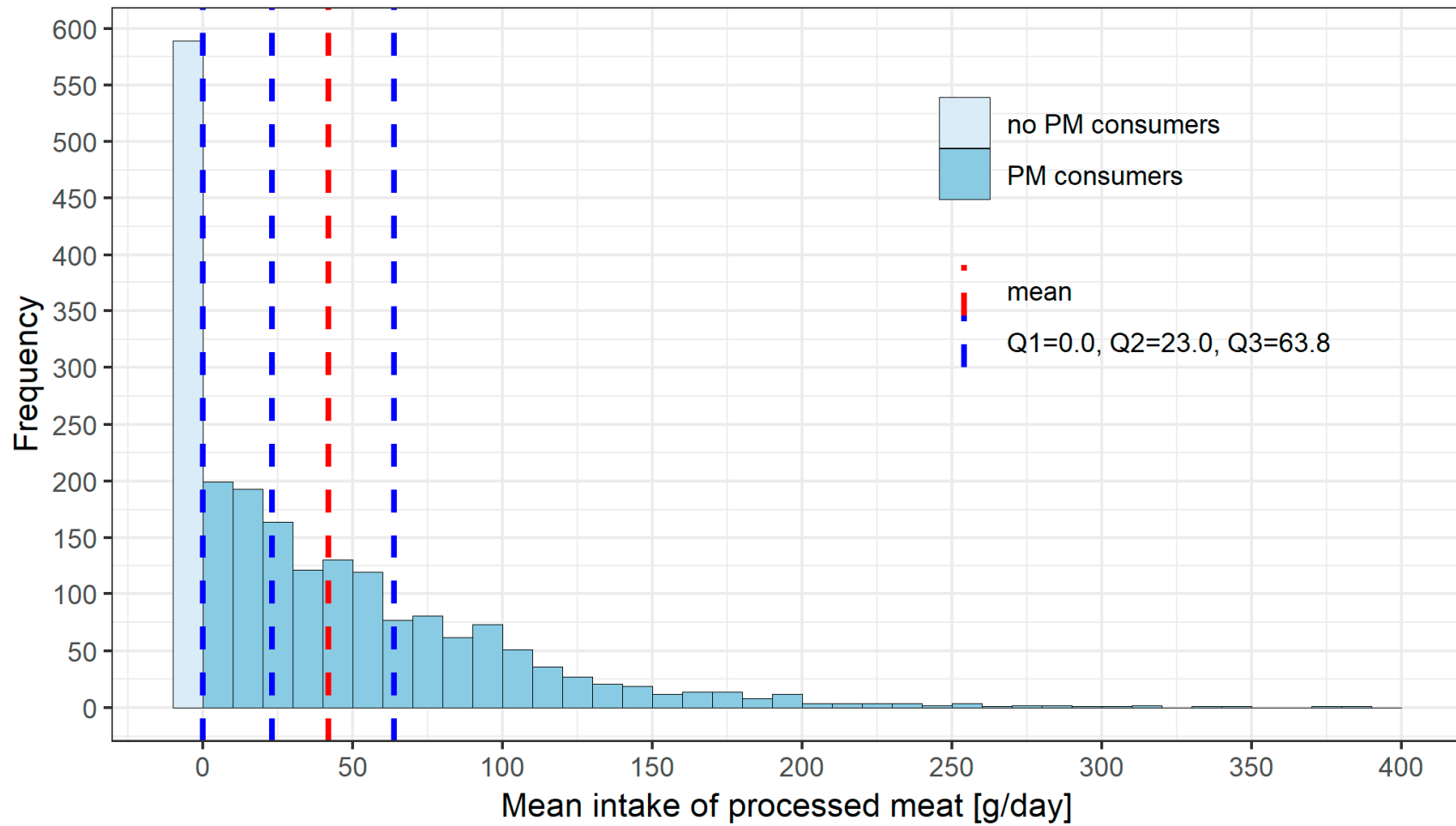


Figure S2. Histogram of processed meat (PM) intakes by the population, National Nutrition Survey menuCH $N = 2,057$ crude data.