

# TGFβ1 induces cisplatin resistance of NSCLC by G6PD

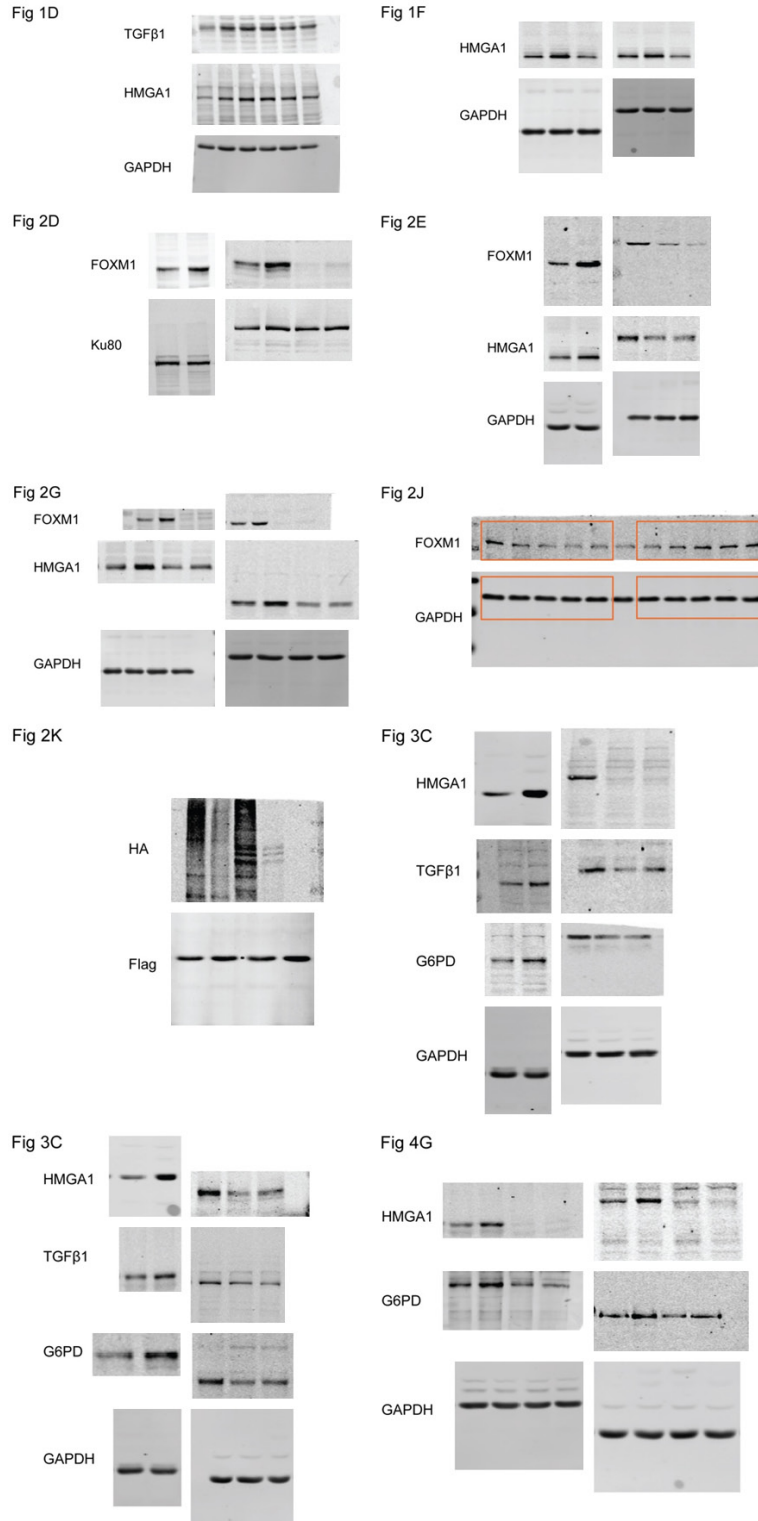


Figure S1. The original images of western blot.

## TGFβ1 induces cisplatin resistance of NSCLC by G6PD

**Table S1.** Primer sequences for qPCR and ChIP

	Gene name	Forward primer (5'→3')	Reverse primer (5'→3')
qPCR	HMGA1	GCTCCAAGAAGATCCGCATT	CTCAGTGCCGTCCTTTTCTCT
	FOXO1	AATTGCCCGAGCACTTGAA	TCCACTTTGATGGGTCTCGC
	TGFβ1	TGGTGGAAACCCACAACGAA	ACACAGAGATCCGAGTCCT
	G6PD	GACGACGAAGCGCAGACA	GGTAGTGGTCGATGCGGTAG
	β-actin	CTCCATCCTGGCCTCGCTGT	GCTGTACCTTCACCGTTCC
ChIP	G6PD promoter	GCCTGGTGACAGAGCGAGATTC	CAATTGAAGGTATCAACTTCTG

**Table S2.** Differentially expressed genes (DEGs) between H1299<sup>siCtrl</sup> and H1299<sup>siHMGA1</sup> cells

Gene	Symbol	En-trez_id	siCtrl#1	siCtrl#2	siHM-GA1#1	siHM-GA1#2	log2FC	p value	FDR	Regulation
NM_001204504	DGKH	160851	2.05841	1.3246	0.00717477	0.00717289	-3.2096	2.34E-55	6.42E-52	Down-regulated
NM_015378	VPS13D	55187	1.47887	0.983994	0.00075053	0.00106282	-2.827	3.24E-42	5.09E-39	Down-regulated
NM_145901	HMGA1	3159	71.6378	56.8912	21.3693	19.1721	-1.4693	2.95E-30	3.59E-27	Down-regulated
NM_001291285	FAT4	79633	1.68697	1.21199	0.228133	0.358392	-1.4474	4.27E-13	1.20E-10	Down-regulated
NM_000402	G6PD	2539	9.2965	8.20298	1.75042	2.47879	-1.4297	3.85E-14	1.28E-11	Down-regulated
NM_001319078	HMGA1	3159	27.322	29.8724	8.06472	10.421	-1.3621	9.00E-20	4.49E-17	Down-regulated
NM_001954	DDR1	780	28.5531	20.0644	5.35907	9.25952	-1.1846	7.19E-10	1.14E-07	Down-regulated
NM_002131	HMGA1	3159	209.129	198.602	86.6153	93.3262	-1.129	1.47E-62	5.37E-59	Down-regulated
NM_000660	TGFβ1	7040	24.9804	23.1378	7.02684	10.9766	-1.1099	5.33E-11	1.15E-08	Down-regulated
NM_001300731	AMBRA1	55626	3.30097	3.01052	1.12903	1.23228	-1.071	1.54E-09	2.11E-07	Down-regulated
NM_145899	HMGA1	3159	379.427	349.397	164.129	178.886	-1.037	3.55E-50	7.79E-47	Down-regulated
NM_004723	ARHGEF2	9181	10.3446	9.9513	3.53214	4.89658	-1.0284	1.12E-10	2.20E-08	Down-regulated
NM_002575	SERPINB2	5055	8.47816	9.95415	3.94916	3.11087	-0.9684	2.84E-07	2.23E-05	Down-regulated
NM_001331012	ITSN1	6453	3.87566	4.5212	1.96303	1.54096	-0.9612	4.08E-08	4.03E-06	Down-regulated
NM_019105	TNXB	7148	34.423	35.0005	16.9011	18.3341	-0.9417	3.67E-47	6.71E-44	Down-regulated
NM_182981	OSGIN1	29948	23.6916	18.1728	7.98835	10.2138	-0.935	2.95E-08	3.14E-06	Down-regulated
NM_001004356	FGFRL1	53834	10.5877	10.5015	3.9254	5.48571	-0.918	3.50E-08	3.56E-06	Down-regulated
NM_001122630	CDKN1C	1028	29.674	22.8108	12.5245	11.8843	-0.9138	1.47E-09	2.04E-07	Down-regulated
NM_000930	PLAT	5327	45.727	40.2601	23.1871	19.8007	-0.9049	9.49E-16	3.86E-13	Down-regulated
NM_001297705	ADGRL2	23266	3.02521	3.7029	1.66023	1.35946	-0.8602	1.53E-06	8.80E-05	Down-regulated
NM_001127361	RNF19B	127544	9.41889	8.91271	4.56323	4.62722	-0.838	8.27E-09	9.76E-07	Down-regulated
NM_025182	FAM214B	80256	4.55482	5.08499	2.28259	2.05393	-0.8338	5.27E-06	0.0002507	Down-regulated
NM_201384	PLEC	5339	56.7497	49.8727	29.0487	30.8308	-0.7916	5.81E-26	4.91E-23	Down-regulated
NM_198490	RAB43	339122	12.6457	9.54902	6.01523	5.43713	-0.7902	1.91E-07	1.57E-05	Down-regulated
NM_002555	SLC22A18	5002	40.1338	30.7188	19.2196	17.3751	-0.7878	1.32E-07	1.15E-05	Down-regulated
NM_001300802	RPS6KA4	8986	6.81595	5.6959	3.27211	2.88222	-0.7852	4.80E-06	0.0002366	Down-regulated
NM_001127398	ERLEC1	27248	7.0088	6.77314	3.27236	3.59245	-0.7765	5.83E-06	0.0002701	Down-regulated
NM_004864	GDF15	9518	393.736	329.66	205.87	200.455	-0.769	7.61E-18	3.63E-15	Down-regulated
NM_000213	ITGB4	3691	82.5255	66.1775	40.5772	42.8491	-0.764	2.08E-13	6.01E-11	Down-regulated
NM_006666	RUVBL2	10856	35.3016	38.5682	18.6296	21.9206	-0.7633	6.38E-10	1.05E-07	Down-regulated
NM_201379	PLEC	5339	4.44338	6.50512	2.85558	2.80809	-0.761	3.31E-06	0.0001747	Down-regulated
NM_148415	ATXN2L	11273	25.7002	24.026	14.4961	13.8266	-0.7574	5.84E-17	2.57E-14	Down-regulated
NM_201995	SF1	7536	11.5858	11.0029	5.80243	6.57937	-0.7564	9.41E-09	1.09E-06	Down-regulated
NM_001329226	LRP10	26020	17.8974	12.6391	8.2528	7.86782	-0.7551	1.05E-06	6.61E-05	Down-regulated
NM_001286723	FAM120A	23196	155.519	138.558	84.183	86.0577	-0.7448	1.05E-23	7.18E-21	Down-regulated
NM_206854	QKI	9444	1.18915	1.48802	0.737738	0.620569	-0.7361	3.06E-05	0.0010803	Down-regulated
NM_001005619	ITGB4	3691	34.6279	32.3848	18.9346	20.2316	-0.7335	8.39E-22	5.12E-19	Down-regulated
NM_080744	SSC4D	136853	16.6629	13.4617	7.37556	8.89088	-0.7332	1.40E-06	8.25E-05	Down-regulated
NM_181552	CUX1	1523	4.62977	3.28809	2.17834	2.05951	-0.7332	3.42E-06	0.0001789	Down-regulated
NM_001794	CDH4	1002	26.9031	16.0255	11.2971	10.8334	-0.7264	3.12E-05	0.0010904	Down-regulated
NM_178031	TMEM132A	54972	196.811	158.391	98.4663	107.178	-0.721	2.75E-12	7.01E-10	Down-regulated
NM_001330789	LIMCH1	22998	2.16912	3.77987	1.39298	0.805367	-0.7176	0.000572	0.0102201	Down-regulated

## TGFβ1 induces cisplatin resistance of NSCLC by G6PD

NR_104603	CRB2	286204	31.0932	19.163	13.0675	13.1692	-0.7173	3.24E-05	0.0011266	Down-regulated
NM_004292	RIN1	9610	41.8127	30.9728	20.303	20.561	-0.7082	4.29E-07	3.02E-05	Down-regulated
NM_002146	HOXB3	3213	8.40108	5.04637	2.93375	3.42351	-0.7053	0.000337	0.0067577	Down-regulated
NM_001102595	DTX2	113878	7.50327	5.31738	2.43029	3.42148	-0.7002	0.000494	0.0090079	Down-regulated
NM_001291860	HSPG2	3339	26.8037	27.3024	16.8994	15.7189	-0.6991	2.78E-26	2.55E-23	Down-regulated
NM_212503	CDK18	5129	5.74312	4.38293	2.82086	1.84111	-0.6927	0.000574	0.0102243	Down-regulated
NM_005166	APLP1	333	17.4832	12.879	8.46847	8.19621	-0.6923	1.48E-05	0.0005882	Down-regulated
NM_138565	CTTN	2017	22.5081	15.0297	10.7901	9.45414	-0.6878	5.25E-05	0.0015894	Down-regulated
NM_001145044	SLC03A1	28232	17.3453	11.6548	7.2352	8.21878	-0.6859	8.63E-05	0.0023218	Down-regulated
NM_003486	SLC7A5	8140	211.665	181.034	112.957	123.467	-0.6846	1.68E-15	6.58E-13	Down-regulated
NM_005904	SMAD7	4092	9.2714	7.78956	4.57883	5.00301	-0.6839	8.14E-06	0.0003507	Down-regulated
NM_001145794	ANTXR2	118429	12.4233	9.70248	6.34663	5.75844	-0.6826	4.00E-05	0.0012995	Down-regulated
NM_001318829	TSC2	7249	7.6304	4.06114	2.5621	2.93639	-0.68	0.000694	0.0118261	Down-regulated
NM_005529	HSPG2	3339	104.789	96.038	58.8314	63.9588	-0.6787	1.05E-24	7.72E-22	Down-regulated
NM_030582	COL18A1	80781	9.86531	7.03539	4.24662	5.08158	-0.6771	4.07E-05	0.0013098	Down-regulated
NM_025250	TTYH3	80727	144.27	115.844	73.3611	82.2111	-0.6744	2.82E-10	4.82E-08	Down-regulated
NM_001031696	PLD3	23646	8.7245	6.30666	4.17825	3.17049	-0.6719	0.000634	0.0110469	Down-regulated
NM_001002030	ECHDC1	55862	18.2775	9.66604	7.02039	6.15841	-0.6705	0.000845	0.0136305	Down-regulated
NR_037941	STX16	8675	6.49327	6.60443	3.85107	3.86364	-0.6704	1.41E-07	1.20E-05	Down-regulated
NM_005438	FOSL1	8061	49.0343	43.9533	28.3721	27.4989	-0.6687	3.86E-11	8.47E-09	Down-regulated
NM_001098416	HDAC7	51564	20.6516	17.0416	11.7731	10.5443	-0.6656	1.03E-07	9.20E-06	Down-regulated
NM_001038	SCNN1A	6337	3.50022	5.05004	2.25189	1.80356	-0.6633	0.000996	0.01534	Down-regulated
NM_001284281	PPP4R3A	55671	6.5869	3.59413	2.57335	1.91169	-0.6612	0.001348	0.0191523	Down-regulated
NM_024111	CHAC1	79094	9.50163	7.12029	4.35919	4.2382	-0.6536	0.000564	0.0100928	Down-regulated
NM_001195267	SSC5D	284297	9.47093	5.62915	3.59539	3.91173	-0.6535	0.000918	0.0144983	Down-regulated
NM_003718	CDK13	8621	4.6576	3.48898	2.47188	2.09612	-0.6487	0.00013	0.0031998	Down-regulated
NM_033113	ZNF628	89887	16.9552	12.6591	8.54466	8.8187	-0.6441	1.15E-05	0.0004783	Down-regulated
NM_003823	TNFRSF6B	8771	222.007	160.86	110.247	115.677	-0.644	2.08E-06	0.0001159	Down-regulated
NM_145903	HMGA1	3159	10.7735	9.85789	5.58294	6.1336	-0.6424	9.79E-05	0.0025732	Down-regulated
NM_001282352	ADAMTS10	81794	7.85068	4.22689	2.49517	2.78916	-0.6372	0.002123	0.0263464	Down-regulated
NM_152441	FBXL14	144699	32.4952	20.0766	12.7581	15.6354	-0.6371	0.000536	0.0096558	Down-regulated
NM_004210	NEURL1	9148	24.9788	19.4122	13.6737	13.1008	-0.6364	8.78E-07	5.73E-05	Down-regulated
NM_001330518	PCYT2	5833	7.37844	5.5088	3.77507	3.6789	-0.6345	7.16E-05	0.0019917	Down-regulated
NM_001077261	NCOR2	9612	56.7268	44.8887	31.9437	30.7676	-0.6338	2.83E-09	3.57E-07	Down-regulated
NM_003749	IRS2	8660	24.4889	20.4339	13.5685	14.2358	-0.6325	1.27E-09	1.81E-07	Down-regulated
NM_000576	IL1B	3553	40.6259	40.1246	25.2534	24.5165	-0.6317	8.54E-10	1.32E-07	Down-regulated
NM_020912	FLYWCH1	84256	32.5115	20.0851	14.925	14.3727	-0.6293	0.00037	0.0072619	Down-regulated
NM_006478	GAS2L1	10634	27.3189	18.5451	10.999	14.561	-0.6284	0.000396	0.0075746	Down-regulated
NM_001001329	PRKCSH	5589	9.04326	7.39725	4.84671	4.56124	-0.6264	0.000187	0.0043107	Down-regulated
NM_145902	HMGA1	3159	22.3535	23.8325	11.4153	15.6453	-0.6245	6.98E-05	0.0019504	Down-regulated
NM_000389	CDKN1A	1026	540.76	480.14	325.753	320.638	-0.6237	2.27E-21	1.25E-18	Down-regulated
NM_001030010	ALDH3B1	221	6.22856	5.80559	3.4198	3.49922	-0.6203	0.000206	0.0046167	Down-regulated
NM_015444	TMEM158	25907	13.0179	13.1408	7.19346	8.31223	-0.6185	5.39E-05	0.0016165	Down-regulated
NM_032385	FAXDC2	10826	5.16686	5.02771	2.89881	2.98678	-0.6134	0.000288	0.0059803	Down-regulated
NM_003483	HMGA2	8091	8.09234	8.2851	5.24751	4.84563	-0.6109	1.41E-06	8.25E-05	Down-regulated
NM_198076	COX20	116228	11.6156	10.2766	7.33644	4.97669	-0.6108	0.000671	0.0115281	Down-regulated
NM_138440	VASN	114990	277.078	219.821	145.548	165.057	-0.6095	3.47E-08	3.56E-06	Down-regulated
NM_153813	ZFPM1	161882	15.5156	14.282	8.65433	9.83989	-0.6093	5.04E-07	3.50E-05	Down-regulated
NM_198830	ACLY	47	11.91	10.9781	7.94645	4.54959	-0.6089	0.001272	0.0183019	Down-regulated
NM_001323951	MBD1	4152	8.62307	4.8266	3.02043	3.58478	-0.6083	0.002814	0.0320824	Down-regulated
NM_001113492	9-Sep	10801	9.62016	10.4597	6.85049	5.06992	-0.6078	0.000127	0.0031617	Down-regulated
NM_001199741	GADD45A	1647	22.316	17.5746	12.0155	11.1774	-0.6064	0.000272	0.005734	Down-regulated
NM_006454	MXD4	10608	48.2621	36.3998	25.6993	26.5947	-0.6054	2.65E-06	0.0001436	Down-regulated
NM_001330358	MTHFR	4524	3.17352	2.61068	1.88272	1.35358	-0.6049	0.000977	0.015172	Down-regulated
NM_001042682	RERE	473	23.0039	21.3534	13.3249	15.031	-0.5975	1.83E-10	3.29E-08	Down-regulated
NM_001100878	MROH6	642475	23.4096	16.9988	9.45567	13.7345	-0.5973	0.000764	0.0126457	Down-regulated
NM_024536	CHPF	79586	152.883	110.995	78.1321	85.6928	-0.595	5.75E-06	0.0002674	Down-regulated

## TGFβ1 induces cisplatin resistance of NSCLC by G6PD

NM_006848	CCDC85B	11007	244.314	180.165	124.851	137.034	-0.5936	7.00E-06	0.0003095	Down-regulated
NM_175573	ADRM1	11047	16.8798	10.7907	6.20823	8.10559	-0.5935	0.002965	0.0330204	Down-regulated
NM_005734	HIPK3	10114	3.85133	3.54545	2.36055	0.968555	-0.5931	0.004371	0.0439583	Down-regulated
NM_182965	SPHK1	8877	8.10886	5.72038	3.90891	3.49748	-0.5925	0.002339	0.0282539	Down-regulated
NM_130444	COL18A1	80781	2.38956	2.28818	1.39406	1.38534	-0.5896	0.000372	0.0072721	Down-regulated
NM_024927	PLEKHH3	79990	20.2776	14.0579	10.0338	10.5003	-0.5889	0.000281	0.005886	Down-regulated
NM_001009813	MEIS3	56917	17.8658	12.4383	8.93069	8.71094	-0.5888	0.000725	0.0121473	Down-regulated
NM_001127266	TMEM129	92305	24.1551	17.5151	13.2738	11.949	-0.5887	0.000145	0.0035016	Down-regulated
NM_001185077	ARHGDI	396	23.9173	14.9886	11.4557	10.7108	-0.5884	0.001202	0.0176163	Down-regulated
NM_014963	SBNO2	22904	85.2209	58.8891	41.4846	47.2842	-0.5874	4.78E-05	0.0014832	Down-regulated
NM_001029882	AHDC1	27245	25.7665	20.7441	14.3458	15.1985	-0.5866	3.12E-07	2.40E-05	Down-regulated
NM_130802	MEN1	4221	14.3777	9.39831	7.04326	6.74821	-0.5858	0.000946	0.0148382	Down-regulated
NM_001005360	DNM2	1785	26.2152	16.1508	9.97915	13.8746	-0.5842	0.001767	0.0232903	Down-regulated
NM_024336	IRX3	79191	39.2964	27.8107	19.0235	21.6337	-0.5842	0.000186	0.0042923	Down-regulated
NM_005560	LAMA5	3911	206.875	177.643	119.501	130.417	-0.5835	1.12E-12	3.08E-10	Down-regulated
NM_025069	ZNF703	80139	62.1668	51.6232	33.9637	38.5942	-0.5827	1.98E-07	1.59E-05	Down-regulated
NM_004104	FASN	2194	100.395	85.0099	55.5483	64.0167	-0.5824	2.78E-09	3.56E-07	Down-regulated
NM_014726	TBKBP1	9755	9.44035	7.91864	5.08353	5.71201	-0.5809	3.71E-05	0.0012242	Down-regulated
NM_013241	FHOD1	29109	15.6628	12.8316	8.89332	9.07916	-0.58	5.08E-06	0.0002435	Down-regulated
NM_020210	SEMA4B	10509	22.5911	18.3486	13.6639	12.1347	-0.5799	6.77E-06	0.0003033	Down-regulated
NM_015516	TSKU	25987	26.0066	19.9475	14.5355	14.0742	-0.5794	3.28E-05	0.0011345	Down-regulated
NM_001322934	NFKB2	4791	19.3119	17.4158	7.49783	13.198	-0.579	0.002093	0.0261233	Down-regulated
NM_018022	TMEM51	55092	7.37877	9.62731	4.47418	5.06766	-0.5783	0.002257	0.0277192	Down-regulated
NM_001033053	NLRP1	22861	3.5133	2.17873	1.55667	1.39626	-0.5761	0.004337	0.0437748	Down-regulated
NR_073080	PHLDA3	23612	165.373	111.585	83.0162	87.4106	-0.5734	0.000128	0.0031799	Down-regulated
NM_020764	CASKIN1	57524	2.90878	2.09558	1.29169	1.49109	-0.5724	0.003037	0.033657	Down-regulated
NM_006540	NCOA2	10499	1.88335	2.7152	1.24555	0.411816	-0.572	0.005079	0.0487558	Down-regulated
NM_017983	WIPI1	55062	7.50741	8.81966	4.87232	4.6844	-0.5714	0.001413	0.0197352	Down-regulated
NM_002228	JUN	3725	218.357	180.166	125.436	133.734	-0.5714	1.14E-09	1.67E-07	Down-regulated
NM_001135999	RUSC2	9853	7.43227	6.14377	3.83693	4.60933	-0.5702	0.000118	0.0029867	Down-regulated
NM_032823	C9orf3	84909	7.449	8.96319	4.85799	5.16715	-0.5702	0.000375	0.0073085	Down-regulated
NM_004421	DVL1	1855	38.1017	27.7036	20.1057	20.9795	-0.5697	7.46E-05	0.0020635	Down-regulated
NM_001282979	TLE3	7090	9.47806	6.0807	5.00508	4.04134	-0.5684	0.001816	0.0237779	Down-regulated
NR_049765	ZBTB7B	51043	10.7805	8.89342	6.77541	5.22866	-0.5683	0.000428	0.0080256	Down-regulated
NM_022566	MESDC1	59274	90.3948	60.3829	44.2793	48.8629	-0.5682	0.000198	0.0045056	Down-regulated
NM_016154	RAB4B	53916	17.2444	14.0988	10.0347	7.72898	-0.5675	0.002432	0.0291132	Down-regulated
NM_001347	DGKQ	1609	11.7516	9.30881	6.46377	6.83114	-0.5671	3.94E-05	0.001287	Down-regulated
NM_024426	WT1	7490	29.873	21.3323	15.3888	16.3789	-0.5671	0.000173	0.0040377	Down-regulated
NM_001098534	BAG6	7917	31.6224	24.3697	16.1052	19.1661	-0.5643	6.31E-05	0.0018084	Down-regulated
NM_001039574	KCNC4	3749	9.74189	7.60469	5.37666	5.41014	-0.5641	0.0002	0.0045233	Down-regulated
NM_001304815	CIC	23152	22.4879	16.2039	10.9815	13.2566	-0.5607	0.000165	0.0038805	Down-regulated
NM_005944	CD200	4345	30.6277	25.9444	16.883	19.3404	-0.5605	9.11E-06	0.0003895	Down-regulated
NM_015925	LSR	51599	30.2656	25.6752	17.0021	18.9005	-0.5601	5.67E-06	0.0002659	Down-regulated
NM_173214	NFAT5	10725	3.76026	4.9796	2.93422	2.51566	-0.5575	0.000343	0.0068149	Down-regulated
NM_198576	AGRN	375790	734.063	566.062	403.531	444.08	-0.5571	3.93E-07	2.84E-05	Down-regulated
NM_152264	SLC39A13	91252	28.3637	23.6129	17.0686	16.4678	-0.5562	4.50E-06	0.0002246	Down-regulated
NM_001080495	TNRC18	84629	123.779	100.842	69.9354	77.6979	-0.5559	2.15E-08	2.33E-06	Down-regulated
NM_139162	MIEF2	125170	12.8465	9.06406	6.43965	6.74531	-0.5543	0.001359	0.0192513	Down-regulated
NM_015037	ZSWIM8	23053	11.5579	8.08844	4.85969	6.85759	-0.5536	0.001912	0.0244679	Down-regulated
NM_198925	SEMA4B	10509	7.2245	8.12608	4.56709	5.14935	-0.5529	0.000146	0.0035063	Down-regulated
NM_002318	LOXL2	4017	523.007	479.073	335.817	336.844	-0.5499	6.94E-25	5.45E-22	Down-regulated
NM_004472	FOXO1	2297	63.2557	49.3927	32.4959	39.4861	-0.5466	8.33E-05	0.0022695	Down-regulated
NM_004409	DMPK	1760	19.1229	10.6467	7.86467	8.98088	-0.5465	0.004812	0.0468482	Down-regulated
NM_178570	RTN4RL2	349667	13.9491	12.063	7.46658	8.87922	-0.5464	0.000349	0.0069033	Down-regulated
NM_005475	SH2B3	10019	7.93468	7.84975	5.16236	5.24905	-0.5424	7.19E-07	4.79E-05	Down-regulated
NM_198042	PDLM2	64236	81.1085	58.6425	42.5397	46.0948	-0.5416	0.000214	0.0047621	Down-regulated
NM_001321096	SREBF1	6720	94.5525	65.5626	49.4665	53.2408	-0.5408	0.000129	0.003184	Down-regulated

## TGFβ1 induces cisplatin resistance of NSCLC by G6PD

NM_003311	PHLDA2	7262	118.418	93.6351	63.6038	72.0516	-0.5404	5.18E-05	0.0015836	Down-regulated
NM_201525	ADGRG1	9289	12.1038	9.3863	6.55873	7.16659	-0.5395	0.000224	0.0049127	Down-regulated
NM_001330740	RUSC2	9853	8.8052	6.98064	4.67627	5.23678	-0.5395	0.000704	0.0119223	Down-regulated
NM_014238	KSR1	8844	4.25254	3.86449	2.30356	2.71947	-0.5394	0.001134	0.0168242	Down-regulated
NM_001290051	UHRF1	29128	7.42842	5.05102	3.07811	4.15341	-0.539	0.004797	0.0468098	Down-regulated
NM_005360	MAF	4094	10.8522	6.78138	5.24139	4.93237	-0.5385	0.004993	0.0482608	Down-regulated
NM_001394	DUSP4	1846	3.36835	2.99341	1.6981	2.17983	-0.5376	0.002229	0.0274347	Down-regulated
NM_001321123	ITGB4	3691	371.372	296.703	217.625	227.535	-0.5374	3.37E-08	3.53E-06	Down-regulated
NM_001220778	CDKN1A	1026	29.7246	28.3204	21.2624	15.9426	-0.5362	0.000212	0.004739	Down-regulated
NM_020360	PLSCR3	57048	49.1584	41.2587	28.1965	31.1878	-0.5361	4.30E-06	0.0002174	Down-regulated
NM_017607	PPP1R12C	54776	95.8882	66.1098	46.7849	56.0922	-0.5358	0.000424	0.0079793	Down-regulated
NM_000022	ADA	100	25.6893	24.1882	16.9308	15.626	-0.5348	1.74E-05	0.0006633	Down-regulated
NM_001162371	LOC728392	728392	45.1073	41.6426	28.0138	29.4056	-0.5348	2.68E-07	2.12E-05	Down-regulated
NM_001304762	EVA1B	55194	117.3	80.3701	60.3281	63.449	-0.5319	0.000696	0.0118563	Down-regulated
NM_001163809	WDR81	124997	8.33966	6.65677	5.2259	4.45533	-0.5307	0.000228	0.0049948	Down-regulated
NM_002616	PER1	5187	3.66876	2.82175	1.86157	2.03218	-0.5306	0.003819	0.039716	Down-regulated
NM_002581	PAPPA	5069	20.8127	21.1308	14.7261	13.7437	-0.5299	7.86E-14	2.46E-11	Down-regulated
NM_001242488	ZSWIM8	23053	6.01779	4.69348	3.70312	3.05549	-0.5288	0.001122	0.0166712	Down-regulated
NM_019032	ADAMTSL4	54507	22.0602	20.9056	13.9315	14.9943	-0.528	5.40E-09	6.67E-07	Down-regulated
NM_001114123	ELK1	2002	9.87751	8.95116	5.89773	6.33007	-0.5272	0.000145	0.0035021	Down-regulated
NR_037688	ACTG1	71	326.299	256.634	199.276	188.228	-0.527	9.40E-07	5.97E-05	Down-regulated
NM_174905	FAM98C	147965	31.4285	20.7055	15.5925	15.9408	-0.5259	0.003516	0.0375359	Down-regulated
NM_203384	RNH1	6050	19.1029	15.1306	12.1037	9.04471	-0.5224	0.002675	0.0310646	Down-regulated
NM_005354	JUND	3727	187.303	130.367	91.9604	112.284	-0.5214	0.000511	0.0092844	Down-regulated
NM_020719	PRR12	57479	10.7422	8.81578	5.99035	6.91353	-0.5208	6.94E-05	0.0019486	Down-regulated
NM_152611	LRRN4	164312	98.1522	93.1158	64.4182	66.4427	-0.519	2.46E-17	1.12E-14	Down-regulated
NM_006133	DAGLA	747	12.3853	9.86063	6.93566	7.71191	-0.5183	0.000109	0.0028116	Down-regulated
NM_015178	RHOBTB2	23221	5.47685	5.38097	3.08481	3.93625	-0.5176	0.000651	0.0112818	Down-regulated
NM_018012	KIF26B	55083	5.61223	4.47335	3.18437	3.40227	-0.517	0.000314	0.0063907	Down-regulated
NM_015073	SIPA1L3	23094	26.3461	21.9582	15.6164	16.9616	-0.5169	6.96E-07	4.66E-05	Down-regulated
NM_001694	ATP6VOC	527	107.614	106.685	55.5332	81.3081	-0.5165	0.000927	0.0146295	Down-regulated
NM_001166347	SLC26A11	284129	13.0829	9.12946	6.78351	7.13533	-0.5163	0.002443	0.0291943	Down-regulated
NM_003047	SLC9A1	6548	21.0534	21.032	12.8979	15.4019	-0.5161	2.88E-06	0.0001551	Down-regulated
NM_001455	FOXO3	2309	5.50789	4.85036	3.58818	3.29832	-0.5158	4.87E-05	0.0015033	Down-regulated
NM_032792	ZBTB45	84878	6.70846	5.77144	4.08211	3.60395	-0.5152	0.004046	0.0414072	Down-regulated
NM_152992	POMZP3	22932	38.112	28.1172	17.8049	23.3373	-0.5147	0.002871	0.0324992	Down-regulated
NM_006079	CITED2	10370	76.6288	66.6417	48.8571	48.0804	-0.5142	4.34E-08	4.26E-06	Down-regulated
NM_022842	CDCP1	64866	8.62744	10.481	6.42981	6.25865	-0.5131	9.25E-05	0.0024583	Down-regulated
NM_001080855	PXN	5829	48.0937	39.0396	28.2836	30.3586	-0.5115	4.80E-06	0.0002366	Down-regulated
NM_001924	GADD45A	1647	353.622	324.701	235.386	228.999	-0.5109	2.07E-16	8.75E-14	Down-regulated
NM_003635	NDST2	8509	7.36179	6.24839	3.97233	4.82354	-0.5102	0.001157	0.0170824	Down-regulated
NM_003043	SLC6A6	6533	13.2084	13.9973	8.8647	9.65668	-0.5101	1.47E-07	1.24E-05	Down-regulated
NM_173564	NYAP1	222950	4.54362	3.77806	2.37032	2.75472	-0.5093	0.004812	0.0468482	Down-regulated
NM_016270	KLF2	10365	47.1887	41.9251	26.4432	33.0311	-0.5093	4.40E-05	0.0013852	Down-regulated
NM_014994	MAPKBP1	23005	2.95123	3.05636	1.82643	2.09789	-0.5074	0.000762	0.0126457	Down-regulated
NM_001144950	SSC5D	284297	9.67318	9.04988	5.89834	6.69043	-0.5074	1.91E-05	0.0007198	Down-regulated
NM_152600	ZNF579	163033	130.464	89.9007	65.352	77.8148	-0.5067	0.000834	0.0134714	Down-regulated
NM_004943	DMWD	1762	32.6817	21.5748	16.5475	18.228	-0.5043	0.002102	0.0261759	Down-regulated
NM_001013642	TRNP1	388610	201.657	158.517	115.334	127.324	-0.5037	1.07E-05	0.0004454	Down-regulated
NM_005027	PIK3R2	5296	66.5036	50.5968	37.4011	41.1124	-0.5035	5.92E-05	0.0017293	Down-regulated
NM_001014832	PAK4	10298	41.9751	32.3168	22.6249	26.5449	-0.5032	0.000308	0.0062767	Down-regulated
NM_032429	LZTS2	84445	13.6488	12.0891	8.68333	8.57586	-0.503	5.57E-05	0.0016561	Down-regulated
NM_001271875	CUEDC1	404093	35.7858	25.9967	19.8346	21.0034	-0.502	0.00041	0.0077816	Down-regulated
NM_017883	WDR13	64743	13.9528	11.5943	8.14724	8.55905	-0.5017	0.000796	0.0130217	Down-regulated
NM_024963	FBXL18	80028	12.921	12.4319	8.76155	8.74312	-0.5016	1.82E-10	3.29E-08	Down-regulated
NM_014002	IKBKE	9641	12.1704	9.92335	6.56387	7.92977	-0.5012	0.000887	0.0141833	Down-regulated
NR_037718	EFEMP2	30008	24.5126	25.9902	15.6479	18.193	-0.5006	7.75E-05	0.0021333	Down-regulated

## TGFβ1 induces cisplatin resistance of NSCLC by G6PD

NM_207115	ZNF580	51157	31.3328	26.8672	15.9132	21.0802	-0.5002	0.002763	0.0316662	Down-regulated
NM_014738	TMEM94	9772	9.27107	7.85893	5.77987	5.77503	-0.4995	4.22E-05	0.0013408	Down-regulated
NM_021151	CROT	54677	4.27451	4.01478	2.45787	2.74689	-0.4988	0.005029	0.0485307	Down-regulated
NM_032772	ZNF503	84858	55.2493	40.9763	30.0135	34.0378	-0.4987	0.00029	0.0060045	Down-regulated
NM_022164	TINAGL1	64129	292.24	237.316	174.103	187.572	-0.4983	5.66E-07	3.89E-05	Down-regulated
NM_001271938	MEGF8	1954	17.5773	14.6826	11.1596	10.9651	-0.4977	6.38E-07	4.30E-05	Down-regulated
NM_017514	PLXNA3	55558	8.18603	6.40145	4.72266	4.99426	-0.4975	0.00036	0.0070831	Down-regulated
NM_005737	ARL4C	10123	10.8983	9.91992	6.96064	7.17246	-0.4971	1.78E-05	0.0006746	Down-regulated
NM_001135635	C11orf68	83638	26.5543	18.8569	14.1331	14.9094	-0.4964	0.002999	0.0333328	Down-regulated
NM_018207	TRIM62	55223	4.29659	3.70373	2.46758	2.63856	-0.4935	0.004041	0.0413981	Down-regulated
NM_001308046	TNK2	10188	7.38961	5.5317	4.28919	4.09329	-0.4921	0.002576	0.0303289	Down-regulated
NR_028406	FXD5	53827	22.2302	20.0052	14.1731	14.1931	-0.491	0.000174	0.0040515	Down-regulated
NM_001162383	ARHGEF2	9181	42.255	39.8299	28.0482	29.151	-0.4905	8.60E-12	2.01E-09	Down-regulated
NM_024747	HPS6	79803	21.5378	16.5395	12.1377	13.2243	-0.4874	0.000767	0.0126686	Down-regulated
NR_136702	SFPQ	6421	31.4606	31.2873	16.9653	24.3418	-0.4864	0.001905	0.0244077	Down-regulated
NM_007286	SYNPO	11346	29.2952	24.2755	18.0811	18.8218	-0.4861	4.46E-06	0.0002236	Down-regulated
NM_203434	IER5L	389792	95.2489	94.1432	55.8749	73.2124	-0.4846	7.84E-05	0.0021511	Down-regulated
NM_014331	SLC7A11	23657	16.4586	19.1569	12.812	11.7912	-0.4844	5.24E-06	0.00025	Down-regulated
NM_001282290	ARHGAP27	201176	5.27332	5.11824	3.54614	3.43619	-0.4843	0.000718	0.0120499	Down-regulated
NM_032421	CLIP2	7461	9.53346	8.16435	6.04239	6.06608	-0.4842	5.25E-05	0.0015894	Down-regulated
NM_175875	SIX5	147912	31.9162	22.0891	16.3744	19.1043	-0.4838	0.002354	0.0284102	Down-regulated
NM_001081492	KRT80	144501	18.4733	17.9798	12.1973	13.0959	-0.4836	3.82E-07	2.80E-05	Down-regulated
NM_014417	BBC3	27113	42.5232	31.6693	20.6558	27.5453	-0.4826	0.003517	0.0375359	Down-regulated
NM_018986	SH3TC1	54436	31.5304	22.5856	17.8772	18.4226	-0.4825	0.000766	0.0126686	Down-regulated
NM_001039999	FAM83G	644815	14.4449	10.0491	8.03542	7.86395	-0.4816	0.004108	0.0419264	Down-regulated
NM_006927	ST3GAL2	6483	10.649	8.10665	6.42385	6.09452	-0.4816	0.001214	0.0177464	Down-regulated
NM_000287	PEX6	5190	14.2351	11.1322	9.01891	7.9304	-0.4805	0.001137	0.0168282	Down-regulated
NM_020452	ATP8B2	57198	4.79818	5.76703	3.6728	3.42923	-0.4791	0.00115	0.0169915	Down-regulated
NM_001271223	OBSCN	84033	1.56565	1.49422	1.05329	1.06738	-0.4781	1.16E-05	0.0004815	Down-regulated
NM_005165	ALDOC	230	12.4626	11.5028	8.04958	7.7824	-0.4779	0.002423	0.029077	Down-regulated
NM_001018078	FIGS	2356	18.6778	19.248	13.5505	12.5353	-0.4778	3.98E-05	0.0012958	Down-regulated
NM_032862	TIGD5	84948	19.8603	14.8918	10.4129	12.4747	-0.4777	0.002949	0.0329441	Down-regulated
NM_004073	PLK3	1263	23.099	18.8295	14.5301	14.0723	-0.4765	0.000232	0.005033	Down-regulated
NM_002149	HPCAL1	3241	131.558	97.2799	72.5789	82.2132	-0.4764	0.000458	0.0084616	Down-regulated
NM_001135770	PVR	5817	18.7527	13.8829	11.0329	10.148	-0.4756	0.005107	0.0488931	Down-regulated
NM_002205	ITGA5	3678	49.391	48.5663	34.5889	34.6603	-0.4745	1.14E-14	4.18E-12	Down-regulated
NM_001141973	ATP13A2	23400	14.7339	13.1999	8.59755	10.5107	-0.4723	0.000322	0.0065175	Down-regulated
NM_001142864	PIEZO1	9780	105.364	84.2712	64.5079	67.9618	-0.4719	2.65E-06	0.0001436	Down-regulated
NM_003461	ZYX	7791	120.132	109.872	76.7027	84.8429	-0.4713	1.12E-08	1.28E-06	Down-regulated
NM_005632	CAPN15	6650	35.6403	24.396	18.4367	21.643	-0.4708	0.002584	0.0303289	Down-regulated
NM_001005731	ITGB4	3691	197.785	214.262	139.607	152.203	-0.469	1.20E-10	2.32E-08	Down-regulated
NM_001280794	EPHB6	2051	8.83128	7.01507	5.1066	5.57612	-0.4683	0.001846	0.0238439	Down-regulated
NM_001271014	KTN1	3895	9.27246	8.39797	5.60796	6.55437	-0.4678	0.000283	0.0059152	Down-regulated
NM_014272	ADAMTS7	11173	20.4255	15.5554	11.6521	12.9788	-0.4667	0.000611	0.0107098	Down-regulated
NM_173542	PLBD2	196463	26.4879	26.4291	18.2219	19.0013	-0.4664	3.20E-07	2.44E-05	Down-regulated
NM_001173431	OBSL1	23363	12.8052	9.01484	7.01815	7.6194	-0.4658	0.002867	0.0324854	Down-regulated
NR_045600	SLC52A2	79581	53.3106	35.7469	28.532	30.6761	-0.4658	0.00363	0.0383604	Down-regulated
NM_024954	UBTD1	80019	106.671	75.0845	59.2039	63.5876	-0.4656	0.001389	0.0194808	Down-regulated
NM_001173408	OBSL1	23363	80.7712	63.3578	48.6333	51.629	-0.4651	4.75E-05	0.001483	Down-regulated
NM_138370	PKDCC	91461	32.4947	23.6077	18.6934	19.2268	-0.465	0.001663	0.0223212	Down-regulated
NM_001099696	REPIN1	29803	22.1202	20.9235	14.3467	15.7845	-0.4647	7.82E-06	0.0003395	Down-regulated
NM_080725	SRXN1	140809	26.7407	23.8644	17.539	17.8876	-0.4641	6.49E-06	0.0002945	Down-regulated
NM_002359	MAFG	4097	15.9351	13.3074	10.8513	9.34181	-0.4636	0.000293	0.0060432	Down-regulated
NM_021727	FADS3	3995	248.834	195.263	152.192	157.065	-0.4634	2.04E-05	0.0007665	Down-regulated
NM_006516	SLC2A1	6513	33.4611	30.6557	23.4987	21.7519	-0.463	3.30E-07	2.48E-05	Down-regulated
NM_001113182	BRD2	6046	21.5406	20.6477	13.7705	15.896	-0.4619	5.55E-06	0.0002616	Down-regulated
NM_173854	SLC41A1	254428	8.11196	7.84261	5.60551	5.5666	-0.4614	3.36E-05	0.00115	Down-regulated

## TGFβ1 induces cisplatin resistance of NSCLC by G6PD

NM_015103	PLXND1	23129	26.5839	23.4368	17.3708	18.1105	-0.4595	1.03E-07	9.20E-06	Down-regulated
NM_007350	PHLDA1	22822	19.7162	21.5534	15.5282	13.4846	-0.4592	2.11E-05	0.00079	Down-regulated
NM_178507	OAF	220323	18.3543	13.9379	10.1717	11.3303	-0.4589	0.004795	0.0468098	Down-regulated
NM_001136053	TPRA1	131601	66.622	55.0685	42.9034	42.1708	-0.4586	2.82E-05	0.0010105	Down-regulated
NM_033452	TRIM47	91107	38.8035	34.2998	25.0436	26.331	-0.4585	6.85E-06	0.0003058	Down-regulated
NM_005884	PAK4	10298	80.5945	59.414	45.2305	51.1358	-0.4573	0.000782	0.0128632	Down-regulated
NM_017617	NOTCH1	4851	7.1226	6.04326	4.39484	4.81281	-0.4566	0.000131	0.0032206	Down-regulated
NM_001037330	TRIM16L	147166	53.4891	57.6574	40.3168	38.1959	-0.4563	1.31E-06	7.87E-05	Down-regulated
NM_172353	CD46	4179	14.9901	11.4543	7.80311	9.89125	-0.4562	0.005056	0.048606	Down-regulated
NM_032339	MIEN1	84299	35.586	32.6815	24.5005	23.1452	-0.4557	6.61E-05	0.0018834	Down-regulated
NM_001243795	CHST12	55501	10.0804	9.00496	5.96885	6.84501	-0.4555	0.004715	0.0462248	Down-regulated
NM_021228	SCAF1	58506	78.5895	62.4869	46.2742	52.545	-0.4554	8.45E-05	0.002292	Down-regulated
NM_001130012	SLC9A3R2	9351	11.9904	11.0542	7.30723	8.39627	-0.4551	0.002128	0.0263725	Down-regulated
NM_181336	LEMD2	221496	49.5142	36.9785	28.2615	31.3516	-0.4546	0.000913	0.0144535	Down-regulated
NM_003040	SLC4A2	6522	141.021	108.134	87.4548	87.5751	-0.454	5.35E-05	0.0016097	Down-regulated
NM_003646	DGKZ	8525	28.6001	22.8705	17.1673	18.7031	-0.454	0.000271	0.0057318	Down-regulated
NM_017789	SEMA4C	54910	21.2567	16.9461	13.1441	13.4574	-0.453	0.00038	0.0073744	Down-regulated
NM_002229	JUNB	3726	58.1028	44.905	34.0093	37.1362	-0.453	0.000676	0.01156	Down-regulated
NM_001901	CTGF	1490	43.2752	44.2597	29.4375	32.6104	-0.4527	1.67E-06	9.52E-05	Down-regulated
NM_022833	FAM129B	64855	184.743	150.815	118.928	119.437	-0.4516	1.41E-06	8.25E-05	Down-regulated
NM_003780	B4GALT2	8704	104.508	74.6591	58.0615	65.1472	-0.45	0.001537	0.0210189	Down-regulated
NM_181892	UBE2D3	7323	16.8676	13.4777	9.55214	11.4029	-0.4499	0.001443	0.0200095	Down-regulated
NM_006312	NCOR2	9612	43.9371	35.4279	27.3669	28.9127	-0.4498	1.43E-05	0.0005679	Down-regulated
NM_001330645	ADGRL2	23266	4.32146	5.07735	3.47157	2.93626	-0.4493	0.003615	0.0382714	Down-regulated
NM_001199417	ARHGAP23	57636	176.819	148.703	111.561	120.94	-0.4484	4.15E-07	2.98E-05	Down-regulated
NM_001127621	GALE	2582	36.3614	36.4323	24.4369	26.8608	-0.4482	3.49E-05	0.0011718	Down-regulated
NM_001297654	DDR1	780	61.61	49.2381	37.904	40.0853	-0.4479	0.000109	0.0028095	Down-regulated
NM_203403	LURAP1L	286343	10.0461	8.95848	5.98241	7.02179	-0.4472	0.003059	0.0337563	Down-regulated
NM_023083	CAPN10	11132	16.9353	13.3647	10.4902	10.4033	-0.4466	0.001708	0.0226811	Down-regulated
NM_145057	CDC42EP5	148170	152.299	116.808	89.1654	96.1655	-0.4466	0.000709	0.0119724	Down-regulated
NM_182557	BCL9L	283149	87.9123	76.9363	57.4363	61.0308	-0.4463	6.68E-09	7.97E-07	Down-regulated
NM_002204	ITGA3	3675	577.602	512.258	389.67	396.2	-0.4457	3.19E-12	7.97E-10	Down-regulated
NM_182919	TICAM1	148022	17.7645	14.8052	11.5429	11.2179	-0.4456	0.000553	0.0099437	Down-regulated
NM_014601	EHD2	30846	136.595	114.77	83.7718	95.0975	-0.4451	8.87E-06	0.0003803	Down-regulated
NM_001145524	YPEL3	83719	29.0817	29.0702	19.1912	20.4919	-0.4448	0.002463	0.0293324	Down-regulated
NM_005524	HES1	3280	46.5602	43.8067	29.6823	33.9335	-0.4443	8.32E-05	0.0022695	Down-regulated
NM_032357	CCDC115	84317	14.7153	13.1666	10.4404	8.63754	-0.4436	0.003618	0.0382714	Down-regulated
NM_001145638	GPSM1	26086	22.869	17.3235	12.9813	14.8434	-0.4424	0.002098	0.0261501	Down-regulated
NM_016174	CERCAM	51148	14.4433	12.4296	8.69328	9.98889	-0.442	0.001431	0.0199192	Down-regulated
NM_001286365	MAP7D1	55700	79.7943	62.703	46.5706	53.8489	-0.4411	0.000328	0.0066387	Down-regulated
NM_032789	PARP10	84875	27.4342	20.9659	15.3505	18.2015	-0.441	0.00216	0.0267059	Down-regulated
NM_001306215	ZNF827	152485	3.81291	4.0409	2.87026	2.65771	-0.4407	0.000667	0.0114902	Down-regulated
NM_033025	SYDE1	85360	32.9569	27.1606	21.319	21.3342	-0.4403	8.76E-05	0.0023512	Down-regulated
NM_016423	ZNF219	51222	53.0753	45.3824	31.502	38.1069	-0.4394	0.000254	0.0054437	Down-regulated
NM_020376	PNPLA2	57104	102.402	85.1807	61.4864	71.5456	-0.4389	0.000105	0.0027231	Down-regulated
NM_001556	IKBKB	3551	9.40254	8.69184	6.83647	5.87325	-0.4383	0.000861	0.0138389	Down-regulated
NM_001281	TBCB	1155	43.1345	39.1755	28.5423	29.8703	-0.4383	4.11E-05	0.0013178	Down-regulated
NM_030935	TSC22D4	81628	60.3409	46.9321	38.085	37.4993	-0.4382	0.000391	0.0074975	Down-regulated
NM_001135050	IGSF9	57549	12.9013	13.1707	8.15925	10.1603	-0.4382	0.000912	0.0144535	Down-regulated
NM_152914	NATD1	256302	12.9853	10.3367	7.95744	8.42057	-0.438	0.000957	0.0149534	Down-regulated
NM_021070	LTBP3	4054	44.2417	42.61	31.8532	31.1272	-0.438	1.13E-11	2.58E-09	Down-regulated
NM_001308305	AGAP3	116988	14.7724	13.466	8.45386	11.0185	-0.4379	0.003852	0.0399464	Down-regulated
NM_001199	BMP1	649	20.2934	20.6349	14.6182	14.6779	-0.4375	1.25E-05	0.0005094	Down-regulated
NM_001145106	FIBCD1	84929	23.4246	16.9123	13.7387	14.108	-0.4366	0.003666	0.0386359	Down-regulated
NM_001282142	TFE3	7030	31.3551	26.3884	20.9439	20.2727	-0.4356	5.60E-05	0.0016561	Down-regulated
NM_002406	MGAT1	4245	67.4443	50.9261	40.7857	42.6592	-0.4355	0.000625	0.0109094	Down-regulated
NM_024876	COQ8B	79934	20.5326	16.8179	12.344	13.8091	-0.4354	0.001472	0.0203301	Down-regulated

## TGFβ1 induces cisplatin resistance of NSCLC by G6PD

NM_001320547	WDR6	11180	15.5803	12.5399	9.24467	10.492	-0.435	0.001378	0.0194258	Down-regulated
NM_001309443	SPARC	6678	31.8123	31.3667	22.728	23.0261	-0.4341	1.29E-08	1.46E-06	Down-regulated
NM_001037806	NCKAP5L	57701	23.3091	18.3827	14.084	15.4121	-0.4339	0.000604	0.0106163	Down-regulated
NM_025241	UBXN6	80700	139.39	126.297	96.9046	95.18	-0.4339	2.05E-09	2.68E-07	Down-regulated
NM_005273	GNB2	2783	182.24	158.826	121.316	124.413	-0.4329	1.39E-07	1.20E-05	Down-regulated
NM_152643	KNDC1	85442	5.4991	4.49221	3.56742	3.44504	-0.4321	0.00196	0.0249077	Down-regulated
NM_006142	SFN	2810	135.644	102.528	78.5492	88.1649	-0.4313	0.001258	0.0182343	Down-regulated
NM_181553	CMTM3	123920	13.3355	12.5225	8.52712	9.46811	-0.4309	0.002797	0.0320288	Down-regulated
NM_004165	RRAD	6236	52.6443	46.7488	36.0731	34.9243	-0.4307	3.59E-05	0.0011991	Down-regulated
NM_001317395	KCTD10	83892	7.53866	7.4232	5.68894	4.83886	-0.4305	0.001667	0.022357	Down-regulated
NM_007284	TWF2	11344	122.371	99.4881	76.0405	82.0853	-0.43	0.000109	0.0028095	Down-regulated
NM_001278212	LRRC20	55222	10.8056	9.80592	7.7836	6.69488	-0.4287	0.002039	0.0256469	Down-regulated
NM_013449	BAZ2A	11176	3.73649	3.93864	2.70792	2.77444	-0.4282	0.000363	0.0071283	Down-regulated
NM_016538	SIRT7	51547	55.7865	40.9951	33.7422	33.8609	-0.428	0.002689	0.0311153	Down-regulated
NM_002017	FLI1	2313	11.6855	11.0082	7.77572	8.50169	-0.4276	0.000156	0.0037024	Down-regulated
NM_019009	TOLLIP	54472	34.4225	24.5556	20.0947	21.1721	-0.4271	0.003354	0.0362841	Down-regulated
NM_201380	PLEC	5339	8.64818	9.01147	6.38068	6.50458	-0.427	2.06E-08	2.27E-06	Down-regulated
NM_194278	ELMSAN1	91748	11.1133	9.62857	7.62563	7.32847	-0.4269	4.04E-05	0.0013058	Down-regulated
NM_001009880	KIAA0930	23313	18.6362	17.4025	13.7642	12.3413	-0.4261	6.98E-06	0.0003095	Down-regulated
NM_001848	COL6A1	1291	289.215	233.97	181.981	196.287	-0.4254	1.32E-05	0.0005353	Down-regulated
NM_001105079	FBRS	64319	24.4019	20.2066	15.3536	16.611	-0.4254	0.000242	0.0052271	Down-regulated
NM_024050	DDA1	79016	20.418	17.6387	13.5335	13.9009	-0.4247	5.87E-05	0.0017202	Down-regulated
NM_002332	LRP1	4035	31.6985	35.6165	25.0602	24.086	-0.4246	1.41E-07	1.20E-05	Down-regulated
NM_030973	MED25	81857	37.5517	28.2669	23.0169	23.4097	-0.4231	0.002239	0.0275282	Down-regulated
NM_145015	MRGPRF	116535	90.157	73.0897	56.8214	60.5499	-0.4221	0.000125	0.003125	Down-regulated
NM_020066	FMN2	56776	4.13706	4.0123	2.89827	2.92283	-0.4215	0.001225	0.0178702	Down-regulated
NM_014901	RNF44	22838	15.8434	13.9005	9.90994	11.4136	-0.4213	0.000481	0.0087958	Down-regulated
NM_052920	KLHL29	114818	21.1856	15.7927	12.7304	13.4618	-0.4212	0.002269	0.0278018	Down-regulated
NM_001142641	FBRSL1	57666	19.546	15.4449	11.3321	13.4474	-0.4204	0.002426	0.0290799	Down-regulated
NM_030645	SH3BP5L	80851	18.8299	15.7498	12.9654	11.7371	-0.4201	0.00093	0.0146586	Down-regulated
NM_198488	FAM83H	286077	50.3451	38.9916	30.803	33.3945	-0.4201	0.00041	0.0077816	Down-regulated
NM_002133	HMOX1	3162	15.1741	14.0864	10.5415	9.98498	-0.4196	0.004443	0.04445	Down-regulated
NM_152892	LRWD1	222229	18.6835	16.1525	12.0773	12.7586	-0.4195	0.001019	0.0155593	Down-regulated
NM_001261403	NFKB2	4791	12.7391	13.4915	9.60441	9.28047	-0.4194	0.000261	0.0055492	Down-regulated
NM_001699	AXL	558	33.6066	33.4168	24.0567	25.1147	-0.4194	2.37E-09	3.07E-07	Down-regulated
NM_022489	INF2	64423	66	49.6294	40.5613	42.3166	-0.4193	0.000658	0.0113579	Down-regulated
NM_004140	LLGL1	3996	30.5324	27.4179	21.2231	21.0718	-0.419	1.26E-06	7.67E-05	Down-regulated
NM_003887	ASAP2	8853	16.5507	17.0103	12.7935	11.6784	-0.4187	6.67E-06	0.0003004	Down-regulated
NM_001128636	ELFN1	392617	61.4496	46.6827	36.6007	40.6847	-0.4186	0.001058	0.0160321	Down-regulated
NM_134323	TARBP2	6895	32.2936	24.9088	19.4406	20.8742	-0.4179	0.003295	0.0357844	Down-regulated
NM_004064	PANX1B	1027	32.7702	30.8639	23.005	23.351	-0.4178	2.91E-06	0.000156	Down-regulated
NM_052839	CDC42EP2	56666	15.1815	12.3921	9.66851	9.96052	-0.4178	0.001781	0.0234509	Down-regulated
NM_145040	PRKCDBP	112464	103.788	79.461	63.8455	65.6464	-0.417	0.001693	0.0225904	Down-regulated
NM_006034	TP53I11	9537	12.7056	13.0896	9.59897	9.04241	-0.4167	0.000214	0.0047598	Down-regulated
NM_001409	MEGF6	1953	63.4755	45.9509	37.6077	40.6755	-0.4167	0.001362	0.0192513	Down-regulated
NM_032038	SPNS1	83985	31.0388	24.0556	20.8999	17.9161	-0.4161	0.004215	0.0427763	Down-regulated
NM_002861	PCYT2	5833	11.4214	9.94225	8.12456	7.06253	-0.4159	0.002679	0.0310675	Down-regulated
NM_005194	CEBPB	1051	251.649	199.038	149.277	174.803	-0.4158	0.000412	0.0078044	Down-regulated
NM_030927	TSPAN14	81619	14.7661	14.8347	10.6537	11.0514	-0.4142	1.45E-06	8.45E-05	Down-regulated
NM_004281	BAG3	9531	34.1149	30.7837	22.8214	24.4259	-0.4142	2.76E-05	0.0009975	Down-regulated
NM_006779	CDC42EP2	10435	73.4075	59.0444	45.4193	49.903	-0.4136	0.000523	0.0094591	Down-regulated
NM_005929	MELTF	4241	227.637	174.478	140.241	150.984	-0.4133	0.000241	0.0052176	Down-regulated
NM_014365	HSPB8	26353	60.0554	52.9262	40.1153	42.1973	-0.4126	1.64E-05	0.0006379	Down-regulated
NM_004431	EPHA2	1969	150.65	131.177	99.6561	107.547	-0.4109	4.37E-07	3.05E-05	Down-regulated
NM_152833	C9orf69	90120	40.7413	31.9614	25.6005	26.7405	-0.4102	0.001022	0.0155699	Down-regulated
NM_004218	RAB11B	9230	84.6132	74.0638	56.4447	59.2804	-0.4094	1.69E-05	0.0006504	Down-regulated
NM_001002909	GPATCH8	23131	7.78087	6.89956	5.43044	5.26526	-0.4093	0.000216	0.0047679	Down-regulated
NM_001085460	CTNND1	1500	14.7364	12.2993	9.7511	9.92677	-0.4088	0.000255	0.0054437	Down-regulated



## TGFβ1 induces cisplatin resistance of NSCLC by G6PD

NM_130854	PTPRS	5802	23.2151	21.5975	15.8456	17.2114	-0.4085	5.39E-07	3.72E-05	Down-regulated
NM_014216	ITPK1	3705	69.5498	60.1551	45.3397	49.7229	-0.4083	1.60E-05	0.0006309	Down-regulated
NM_174983	MFSD12	126321	40.1968	30.8229	24.7447	26.0793	-0.407	0.002703	0.0311758	Down-regulated
NM_004954	MARK2	2011	11.3909	11.1027	7.95234	8.50499	-0.4067	9.54E-05	0.0025235	Down-regulated
NM_019015	CHPF2	54480	33.7514	26.333	21.9626	21.5421	-0.4057	0.000994	0.0153233	Down-regulated
NM_015048	SETD1B	23067	7.33529	6.26429	4.82537	5.0863	-0.405	0.000515	0.0093386	Down-regulated
NM_201446	EGFL7	51162	105.853	79.1195	64.2554	67.8721	-0.4039	0.002804	0.0320368	Down-regulated
NM_024496	IRF2BPL	64207	33.0879	25.3953	20.5511	21.7344	-0.4038	0.001608	0.0217415	Down-regulated
NM_178820	FBXO27	126433	12.8078	11.4515	8.05088	9.23809	-0.4036	0.00482	0.0468785	Down-regulated
NM_001012761	RGMB	285704	6.83492	7.86267	5.41237	5.20475	-0.4013	0.002905	0.0326965	Down-regulated
NM_012155	EML2	24139	21.5393	17.9531	15.0128	13.4043	-0.4004	0.002963	0.0330204	Down-regulated
NM_001130144	LTBP3	4054	98.8077	76.8681	61.9497	66.6295	-0.3998	0.00039	0.0074975	Down-regulated
NM_004706	ARHGEF1	9138	39.3174	31.7963	23.8123	27.7815	-0.3994	0.001683	0.0224839	Down-regulated
NM_032575	GLIS2	84662	33.7961	27.0785	20.4042	23.7492	-0.3992	0.00192	0.0245376	Down-regulated
NM_001025434	NQO1	1728	13.9184	14.0028	9.92052	10.4085	-0.3991	0.000979	0.0151799	Down-regulated
NM_030930	UNC93B1	81622	65.6084	49.1539	40.5009	42.3697	-0.399	0.002584	0.0303289	Down-regulated
NM_001012614	CTBP1	1487	65.0335	53.5945	41.7487	45.1166	-0.3986	0.000288	0.0059803	Down-regulated
NM_004451	ESRRA	2101	19.5871	16.8099	11.8981	14.2524	-0.3982	0.0047	0.0461632	Down-regulated
NM_006005	WFS1	7466	8.9358	9.4652	5.98652	7.26881	-0.398	0.005042	0.0485793	Down-regulated
NM_019112	ABCA7	10347	7.26334	6.37561	5.07566	4.91718	-0.3978	0.000585	0.010403	Down-regulated
NM_138368	AP5B1	91056	14.2604	10.5154	8.72255	9.11394	-0.3973	0.005043	0.0485793	Down-regulated
NM_014567	BCAR1	9564	88.5428	66.2418	50.8522	60.899	-0.397	0.003652	0.0385267	Down-regulated
NM_198291	SRC	6714	17.9978	15.5564	11.8151	12.8166	-0.3968	0.000422	0.0079677	Down-regulated
NM_001164446	C6orf132	647024	14.3952	11.5263	8.65728	10.1489	-0.3967	0.002844	0.0323614	Down-regulated
NM_178167	ZNF598	90850	41.1895	30.8362	24.4083	27.5533	-0.3967	0.004103	0.0419101	Down-regulated
NM_001199698	BAG6	7917	29.9088	29.3909	21.8383	22.2899	-0.396	3.44E-07	2.57E-05	Down-regulated
NM_014786	ARHGEF17	9828	32.4391	25.1718	19.963	22.1666	-0.3958	0.001121	0.0166712	Down-regulated
NM_022450	RHBDF1	64285	28.2588	22.1251	17.4249	19.086	-0.3953	0.00292	0.0327747	Down-regulated
NM_030783	PTDSS2	81490	20.1767	18.0714	13.6318	14.4013	-0.395	0.000597	0.0105288	Down-regulated
NM_001322841	ABR	29	38.0298	32.4427	23.5407	28.2451	-0.3947	0.000558	0.010015	Down-regulated
NM_000693	ALDH1A3	220	1441.27	1445.95	1080.58	1087.9	-0.3944	3.30E-27	3.29E-24	Down-regulated
NM_021005	NR2F2	7026	35.413	34.1766	23.8287	27.7798	-0.394	3.30E-05	0.0011369	Down-regulated
NM_018639	WSB2	55884	35.1144	34.4895	25.6098	26.1597	-0.3939	8.88E-07	5.73E-05	Down-regulated
NM_014643	ZNF516	9658	5.163	4.93053	3.58618	3.86895	-0.3918	0.00039	0.0074975	Down-regulated
NM_001318734	KLC2	64837	12.2626	11.3453	8.22267	9.03939	-0.3904	0.00189	0.0243314	Down-regulated
NM_001256183	ANKRD11	29123	17.1046	14.5951	11.6094	11.9626	-0.39	5.25E-05	0.0015894	Down-regulated
NM_005115	MVP	9961	112.862	96.6982	74.2558	81.488	-0.3889	3.10E-05	0.0010865	Down-regulated
NM_138420	AHNAK2	113146	6.25057	6.04919	4.7985	4.39752	-0.3889	6.39E-06	0.0002911	Down-regulated
NM_000202	IDS	3423	6.22364	6.91825	5.12127	4.5553	-0.3877	0.001623	0.0218997	Down-regulated
NM_012121	CDC42EP4	23580	50.5854	38.2043	32.3767	32.5401	-0.3875	0.002689	0.0311153	Down-regulated
NM_017546	CNOT11	55571	42.7413	38.1157	29.0139	31.0771	-0.3865	6.51E-05	0.0018612	Down-regulated
NM_001001852	PIM3	415116	37.9747	30.0563	23.6743	26.0282	-0.3862	0.002971	0.0330514	Down-regulated
NM_002052	GATA4	2626	10.6952	9.94621	6.97289	8.14043	-0.3853	0.003501	0.0374661	Down-regulated
NM_053056	CNND1	595	123.612	124.55	92.0089	95.2979	-0.3852	2.79E-14	9.56E-12	Down-regulated
NM_001136044	TMUB1	83590	69.8788	57.4958	42.2871	50.2951	-0.3848	0.003742	0.0392064	Down-regulated
NM_012292	ARHGAP45	23526	42.4654	34.801	27.6365	29.7868	-0.3841	0.00029	0.0060045	Down-regulated
NM_006482	DYRK2	8445	5.06747	4.36834	3.52433	3.36551	-0.384	0.004855	0.0471378	Down-regulated
NM_012288	TRAM2	9697	23.8388	26.0951	19.0094	18.4679	-0.3839	4.90E-06	0.0002394	Down-regulated
NM_001014447	CPZ	8532	15.0324	14.1421	10.2918	11.0902	-0.3839	0.002307	0.0280884	Down-regulated
NM_002608	PDGFB	5155	10.5352	9.57837	6.9619	7.84503	-0.3838	0.002319	0.02814	Down-regulated
NM_013403	STRN4	29888	38.7366	30.8198	24.4997	26.7159	-0.3834	0.001819	0.0237779	Down-regulated
NM_001198801	EIF4G3	8672	10.1063	8.6877	7.48485	6.3536	-0.3825	0.00285	0.0323689	Down-regulated
NM_014856	DENND4B	9909	10.421	9.16715	6.85758	7.65977	-0.3822	0.001101	0.0164902	Down-regulated
NM_001039673	YIF1B	90522	13.0126	11.4942	8.4721	9.4829	-0.382	0.004271	0.043239	Down-regulated
NM_002081	GPC1	2817	90.1043	73.4369	58.9516	62.8448	-0.382	0.000202	0.0045439	Down-regulated
NM_006795	EHD1	10938	174.829	156.263	122.168	127.284	-0.3812	3.03E-08	3.20E-06	Down-regulated
NM_079834	SCAMP4	113178	37.2763	31.833	25.5584	25.8611	-0.381	0.00026	0.0055419	Down-regulated

## TGFβ1 induces cisplatin resistance of NSCLC by G6PD

NM_016368	ISYNA1	51477	154.943	117.755	95.3132	105.617	-0.3809	0.001898	0.0243823	Down-regulated
NM_024682	TBC1D17	79735	23.7486	20.112	16.6317	15.7351	-0.3798	0.001842	0.0238361	Down-regulated
NM_001959	EEF1B2	1933	36.2922	34.2294	26.5974	25.1838	-0.3782	0.002176	0.0268446	Down-regulated
NM_018955	UBB	7314	932.885	854.999	616.593	719.076	-0.3774	1.17E-05	0.0004835	Down-regulated
NM_001098424	DLG1	1739	14.8079	12.6603	10.9683	9.33936	-0.3772	0.002894	0.0326416	Down-regulated
NM_015177	DTX4	23220	12.9706	11.1757	9.05193	8.97605	-0.3771	0.000447	0.0082898	Down-regulated
NM_002419	MAP3K11	4296	33.0848	26.4651	21.0772	23.0428	-0.3761	0.002158	0.0267059	Down-regulated
NM_012478	WBP2	23558	108.996	95.6984	73.6892	79.7479	-0.3757	3.33E-05	0.0011423	Down-regulated
NM_002659	PLAUR	5329	55.5411	57.6033	43.6323	41.0421	-0.3755	6.87E-05	0.0019442	Down-regulated
NM_001193524	FAM65A	79567	37.4035	36.2641	23.7005	30.8636	-0.3755	0.002895	0.0326416	Down-regulated
NM_182943	PLOD2	5352	93.8106	104.852	74.6849	75.4065	-0.3752	2.35E-06	0.0001306	Down-regulated
NM_017999	RNF31	55072	22.7074	19.0692	14.8309	16.2502	-0.3746	0.001455	0.0201547	Down-regulated
NM_000602	SERPINE1	5054	901.241	1008.37	736.936	707.622	-0.3746	4.24E-07	3.01E-05	Down-regulated
NM_031459	SESN2	83667	31.8755	26.4114	21.4753	22.0488	-0.3745	0.000673	0.0115432	Down-regulated
NM_006455	P3H4	10609	18.0263	16.1477	13.0173	12.4419	-0.3731	0.001319	0.0188591	Down-regulated
NM_024832	RIN3	79890	15.8607	14.8682	10.6132	12.3356	-0.3718	0.001262	0.0182343	Down-regulated
NM_001080453	INTS1	26173	80.5864	57.4495	49.5025	52.7022	-0.3712	0.004764	0.0466291	Down-regulated
NM_003330	TXNRD1	7296	105.877	108.663	80.0507	83.343	-0.3709	5.76E-11	1.22E-08	Down-regulated
NM_022767	AEN	64782	36.6395	31.9592	26.1438	25.5096	-0.3701	0.00013	0.0031996	Down-regulated
NM_031450	C11orf68	83638	40.9078	35.332	27.5411	29.232	-0.3687	0.001479	0.0204019	Down-regulated
NM_182838	SLC35E2	9906	12.3219	11.7764	9.27502	8.98583	-0.3675	3.30E-05	0.0011369	Down-regulated
NM_020338	ZMIZ1	57178	21.2258	21.5589	16.632	15.9682	-0.3672	2.35E-07	1.87E-05	Down-regulated
NM_001321463	NCLN	56926	20.7378	16.7269	14.4586	13.433	-0.3667	0.003686	0.0387662	Down-regulated
NR_033403	BMP1	649	10.6354	9.64623	7.92972	7.2118	-0.3663	0.002802	0.0320368	Down-regulated
NM_005257	GATA6	2627	70.6386	59.2467	47.0177	50.991	-0.3663	0.00022	0.0048307	Down-regulated
NM_030665	RAI1	10743	35.7358	28.1617	22.1981	25.6093	-0.3661	0.002585	0.0303289	Down-regulated
NM_001330520	TNRC6A	27327	10.174	10.9045	7.9471	8.05545	-0.3655	6.13E-05	0.0017664	Down-regulated
NM_006039	MRC2	9902	79.0541	65.2349	53.9438	55.3682	-0.365	9.79E-05	0.0025732	Down-regulated
NM_145109	MAP2K3	5606	36.5507	36.5295	27.1155	28.2886	-0.3646	3.00E-05	0.001066	Down-regulated
NM_001195733	PIP5K1C	23396	7.22322	6.3096	4.92039	5.17112	-0.3641	0.004482	0.0446011	Down-regulated
NM_033238	PML	5371	6.50588	6.26339	4.5358	5.03617	-0.364	0.002733	0.0313927	Down-regulated
NM_004560	ROR2	4920	12.5042	11.216	8.96759	8.90767	-0.3631	0.000954	0.0149462	Down-regulated
NM_002428	MMP15	4324	43.7282	34.708	27.9008	30.9165	-0.3629	0.002381	0.0286702	Down-regulated
NM_032804	ADO	84890	15.4215	12.4511	10.495	10.2832	-0.3626	0.00513	0.049067	Down-regulated
NM_202468	GIPC1	10755	63.9369	65.1636	48.3044	49.8585	-0.3617	5.08E-06	0.0002435	Down-regulated
NM_078480	PUF60	22827	23.2978	24.0548	18.2781	17.3554	-0.3603	0.001293	0.0185541	Down-regulated
NM_015627	LDLRAP1	26119	13.8476	12.4338	9.73773	9.99797	-0.3601	0.002573	0.0303289	Down-regulated
NM_002480	PPP1R12A	4659	13.2448	13.2957	10.222	10.0117	-0.36	3.65E-05	0.0012059	Down-regulated
NM_001170718	BCAR1	9564	42.9912	37.9229	30.2706	31.288	-0.3593	6.62E-05	0.0018834	Down-regulated
NM_006598	SLC12A7	10723	18.1895	15.4048	12.5159	12.922	-0.3586	0.000808	0.0131375	Down-regulated
NM_030775	WNT5B	81029	36.1327	29.6819	25.2306	24.18	-0.3579	0.002937	0.0329128	Down-regulated
NM_003900	SQSTM1	8878	1288.93	1182.95	954.066	944.835	-0.3576	5.43E-12	1.33E-09	Down-regulated
NM_002403	MFAP2	4237	81.1977	68.8862	56.9533	55.57	-0.3572	0.001278	0.0183619	Down-regulated
NM_004995	MMP14	4323	58.7411	52.2931	42.1617	42.7511	-0.3567	7.63E-06	0.0003326	Down-regulated
NM_001127173	CADM3	57863	51.4179	46.4272	37.5251	37.3693	-0.3564	3.56E-06	0.0001851	Down-regulated
NM_004712	HGS	9146	103.213	80.6598	65.5039	73.0127	-0.3563	0.002615	0.0306007	Down-regulated
NM_004756	NUMBL	9253	14.7318	12.3265	10.2784	10.0656	-0.356	0.004	0.041163	Down-regulated
NM_001425	EMP3	2014	241.233	205.544	160.087	174.654	-0.3559	0.000483	0.0088283	Down-regulated
NM_024417	FDXR	2232	102.176	81.0079	69.2502	68.7392	-0.3559	0.001818	0.0237779	Down-regulated
NM_001013251	SLC3A2	6520	277.466	252.879	198.257	207.851	-0.3558	4.78E-08	4.60E-06	Down-regulated
NM_177939	P4HTM	54681	55.2134	46.9348	38.4541	39.0124	-0.3549	0.000564	0.0100928	Down-regulated
NM_138795	ARL8A	127829	30.5391	29.1307	23.709	21.4077	-0.354	0.001439	0.0199721	Down-regulated
NM_002521	NPPB	4879	1160.01	1039.08	816.953	843.4	-0.354	3.99E-08	3.99E-06	Down-regulated
NM_003153	STAT6	6778	49.4652	41.0805	34.56	34.3861	-0.3535	0.000435	0.0081149	Down-regulated
NM_001143963	L1CAM	3897	37.3334	30.9424	27.2799	24.6146	-0.3519	0.001338	0.0190322	Down-regulated
NM_130445	COL18A1	80781	118.965	98.8831	81.0436	85.7577	-0.3513	0.00012	0.0030147	Down-regulated
NM_018071	ARHGEF40	55701	7.96136	7.06532	5.51248	5.88485	-0.3512	0.002549	0.0301679	Down-regulated

## TGFβ1 induces cisplatin resistance of NSCLC by G6PD

NM_001301076	AP2S1	1175	69.6743	76.5359	52.2007	57.2323	-0.3499	0.003936	0.0406935	Down-regulated
NM_001177355	MSLN	10232	76.7763	65.318	51.0881	56.9522	-0.3493	0.001013	0.0154863	Down-regulated
NM_153265	EML3	256364	28.5704	23.5505	18.5327	20.8919	-0.3487	0.004476	0.0446011	Down-regulated
NM_001010972	ZYX	7791	138.605	127.98	95.4128	109.046	-0.3476	6.90E-05	0.0019442	Down-regulated
NM_005186	CAPN1	823	96.2843	82.5297	65.9896	71.1052	-0.3476	0.000146	0.0035063	Down-regulated
NM_000581	GPX1	2876	554.172	457.243	374.428	395.684	-0.3462	0.0002	0.0045233	Down-regulated
NM_003482	KMT2D	8085	10.3677	9.6641	7.75819	7.75859	-0.346	3.03E-07	2.34E-05	Down-regulated
NM_006949	STXB2	6813	99.9318	83.2467	68.381	71.4033	-0.3456	0.0007	0.0118952	Down-regulated
NM_001289984	JADE2	23338	9.93445	11.2164	8.58813	7.52633	-0.3444	0.00414	0.0421349	Down-regulated
NM_002886	RAP2B	5912	8.5703	8.24494	6.14619	6.7879	-0.3441	0.000454	0.0084147	Down-regulated
NM_006317	BASP1	10409	238.755	217.608	175.305	177.251	-0.3439	5.02E-08	4.80E-06	Down-regulated
NM_005597	NFIC	4782	13.0966	14.9523	10.1708	11.3216	-0.3434	0.001794	0.0235868	Down-regulated
NM_001098833	ATXN7L3	56970	20.9292	18.502	14.464	15.7056	-0.3434	0.001327	0.01894	Down-regulated
NM_001017987	MRNIP	51149	120.66	122.294	96.3272	89.3489	-0.3429	8.87E-05	0.002377	Down-regulated
NM_001080826	SGK223	157285	12.5412	10.8879	8.58309	9.30593	-0.3425	0.003058	0.0337563	Down-regulated
NM_153271	SNX33	257364	33.8992	31.1668	25.9389	24.1922	-0.342	0.000157	0.0037158	Down-regulated
NM_016352	CPA4	51200	384.532	392.877	303.405	301.399	-0.3414	5.25E-14	1.69E-11	Down-regulated
NM_002579	PALM	5064	16.2361	15.4912	11.6391	12.6399	-0.3405	0.002199	0.0271041	Down-regulated
NM_153828	RTN4	57142	600.162	538.833	434.944	448.459	-0.3404	3.87E-08	3.90E-06	Down-regulated
NM_005082	TRIM25	7706	42.4346	43.4016	33.1827	33.6248	-0.3399	2.17E-08	2.33E-06	Down-regulated
NM_001940	ATN1	1822	48.162	41.6219	33.3971	35.89	-0.3395	0.000255	0.0054437	Down-regulated
NM_173689	CRB2	286204	50.873	43.4017	33.7737	38.9013	-0.3368	0.001165	0.0171747	Down-regulated
NM_001127392	MYRF	745	133.81	120.089	97.5288	100.365	-0.3365	1.97E-07	1.59E-05	Down-regulated
NM_024698	SLC25A22	79751	31.217	26.2983	22.1498	22.0428	-0.3353	0.002325	0.0281751	Down-regulated
NM_001289823	FURIN	5045	43.5994	38.7872	30.7437	33.1488	-0.335	0.000139	0.0033958	Down-regulated
NM_053279	FAM167A	83648	31.01	27.8004	22.9623	22.6633	-0.3346	0.000114	0.002913	Down-regulated
NM_002826	QSOX1	5768	212.264	181.006	153.635	151.812	-0.3342	3.41E-05	0.0011591	Down-regulated
NM_015894	STMN3	50861	104.83	86.4818	68.2593	78.6058	-0.3341	0.002952	0.0329444	Down-regulated
NM_015472	WWTR1	25937	10.7522	10.6846	8.09395	8.49578	-0.334	0.000712	0.0119938	Down-regulated
NM_014045	LRP10	26020	60.6083	52.8286	44.0215	44.3197	-0.3339	1.64E-05	0.0006379	Down-regulated
NM_020378	NAT14	57106	96.7848	81.6732	67.2456	69.6428	-0.3339	0.001374	0.0193915	Down-regulated
NM_020898	CALCOCO1	57658	31.1503	28.6566	22.8493	23.5172	-0.3337	0.000164	0.0038649	Down-regulated
NM_004417	DUSP1	1843	403.367	354.984	284.089	304.894	-0.3331	1.05E-05	0.0004429	Down-regulated
NM_003687	PDLIM4	8572	90.2106	71.1737	60.8244	62.9861	-0.3328	0.003764	0.0392934	Down-regulated
NM_032960	MAPKAPK2	9261	24.8027	24.0409	18.7025	19.1918	-0.3324	0.000198	0.0045056	Down-regulated
NM_080388	S100A16	140576	255.591	238.563	193.997	189.423	-0.3322	1.52E-07	1.27E-05	Down-regulated
NM_001846	COL4A2	1284	192.959	186.678	145.803	152.057	-0.3321	2.01E-13	5.97E-11	Down-regulated
NM_003898	SYNJ2	8871	8.23508	8.54739	6.87576	6.09768	-0.3313	0.002318	0.02814	Down-regulated
NM_001042545	LTBP4	8425	14.301	12.6969	10.6537	10.2932	-0.3281	0.001438	0.0199721	Down-regulated
NM_001183	ATP6AP1	537	123.844	106.569	88.0024	91.2189	-0.3268	0.000201	0.0045323	Down-regulated
NM_014727	KMT2B	9757	9.77203	8.62438	6.90255	7.41258	-0.3251	0.001582	0.0214484	Down-regulated
NM_000101	CYBA	1535	1003.6	781.643	644.038	714.767	-0.3236	0.003858	0.0399605	Down-regulated
NM_014516	CNOT3	4849	33.7605	30.2748	24.1161	25.7853	-0.3231	0.000824	0.0133239	Down-regulated
NM_019058	DDIT4	54541	143.91	120.202	100.413	105.063	-0.321	0.000999	0.0153666	Down-regulated
NM_005729	PIIF	10105	88.3842	94.9678	71.4807	72.3072	-0.321	3.45E-05	0.0011652	Down-regulated
NM_024598	USB1	79650	22.2681	20.9018	17.524	15.9574	-0.3202	0.004275	0.043239	Down-regulated
NM_024321	RBM42	79171	84.9345	73.7427	61.2541	62.4212	-0.32	0.000615	0.0107642	Down-regulated
NM_002705	PPL	5493	52.2291	52.931	39.8963	43.081	-0.3198	1.21E-06	7.57E-05	Down-regulated
NM_001099409	EHBP1L1	254102	28.688	25.6497	20.6428	21.9832	-0.3197	0.000284	0.0059152	Down-regulated
NM_014030	GIT1	28964	35.2851	30.9528	25.889	26.0021	-0.3189	0.000476	0.0087207	Down-regulated
NM_003370	VASP	7408	50.4264	42.4477	34.9036	37.3274	-0.3186	0.003305	0.0358664	Down-regulated
NM_021035	ZNF1	57169	15.8468	18.1854	13.6919	12.9399	-0.3184	0.002116	0.0262791	Down-regulated
NM_006029	PNMA1	9240	71.7446	64.7113	53.7375	53.5147	-0.318	4.21E-05	0.0013395	Down-regulated
NM_018426	TMEM63B	55362	24.9318	22.227	18.2082	18.705	-0.3169	0.001233	0.0179625	Down-regulated
NM_006096	NDRG1	10397	59.6719	58.0538	45.724	47.1887	-0.3166	1.48E-06	8.56E-05	Down-regulated
NM_020746	MAVS	57506	8.25007	7.51693	6.53684	5.82433	-0.3161	0.001936	0.0246381	Down-regulated
NM_005819	STX6	10228	8.57882	8.18542	6.56344	6.56463	-0.3141	0.003334	0.0361037	Down-regulated
NM_002821	PTK7	5754	27.8705	28.7056	21.6933	22.9593	-0.3136	0.000105	0.002723	Down-regulated

## TGFβ1 induces cisplatin resistance of NSCLC by G6PD

NM_153827	MINK1	50488	29.0403	23.741	20.9246	20.3612	-0.3136	0.004177	0.0424718	Down-regulated
NM_000637	GSR	2936	46.7964	49.643	38.567	37.5533	-0.3135	7.58E-05	0.0020923	Down-regulated
NM_001303614	SAMD4B	55095	13.5686	12.8807	10.0747	10.6476	-0.3132	0.003377	0.0364205	Down-regulated
NM_015318	ARHGEF18	23370	20.812	17.3945	14.6158	15.3006	-0.3129	0.004004	0.0411719	Down-regulated
NM_002335	LRP5	4041	23.0398	19.4773	16.0457	17.2787	-0.3123	0.003468	0.0371927	Down-regulated
NM_023106	FGFR1	2260	28.3286	27.3246	21.8392	22.2844	-0.3119	3.96E-06	0.0002031	Down-regulated
NM_005990	STK10	6793	17.4138	15.5137	13.1553	12.8084	-0.3116	0.000736	0.0122899	Down-regulated
NM_018067	MAP7D1	55700	21.8854	18.7939	16.4151	15.4505	-0.3112	0.004699	0.0461632	Down-regulated
NM_006698	BLCAP	10904	50.9477	50.4579	40.0868	39.9181	-0.3111	7.89E-05	0.0021594	Down-regulated
NM_002631	PGD	5226	112.009	112.185	88.5828	89.2676	-0.31	8.45E-08	7.80E-06	Down-regulated
NM_006470	TRIM16	10626	32.7284	35.2707	27.4481	26.182	-0.3088	0.00097	0.0150813	Down-regulated
NM_022060	ABHD4	63874	35.9009	34.8692	27.2447	28.6727	-0.3084	0.000334	0.006735	Down-regulated
NM_024519	FAM65A	79567	78.3914	69.6237	59.3603	58.0765	-0.3075	4.12E-05	0.0013178	Down-regulated
NM_003969	UBE2M	9040	154.123	124.907	109.113	109.432	-0.3063	0.003651	0.0385267	Down-regulated
NM_138761	BAX	581	190.824	181.662	142.634	148.824	-0.3061	0.000123	0.0030921	Down-regulated
NM_182683	UPK3B	80761	252.805	208.491	185.665	176.67	-0.3056	0.001702	0.0226488	Down-regulated
NM_001122681	SH3BP2	6452	6.2671	5.66679	4.66483	4.76032	-0.3053	0.003272	0.0356443	Down-regulated
NM_021173	POLD4	57804	37.5478	34.366	28.6088	27.9643	-0.3042	0.002588	0.0303321	Down-regulated
NM_017556	FBLIM1	54751	70.6114	68.7304	53.9718	57.0726	-0.304	2.65E-06	0.0001436	Down-regulated
NM_002309	LIF	3976	50.3477	42.0134	36.4757	36.5102	-0.3039	0.002074	0.0259044	Down-regulated
NM_014654	SDC3	9672	10.9522	10.4448	8.42586	8.51576	-0.3037	0.001828	0.0238073	Down-regulated
NM_000528	MAN2B1	4125	95.0488	83.7321	70.3349	71.7186	-0.3037	9.24E-05	0.0024583	Down-regulated
NM_032989	BAD	572	116.895	101.25	84.8705	85.8408	-0.3028	0.002541	0.0301365	Down-regulated
NR_046235	RNA45S5	1E+08	858.591	1022.72	689.845	799.617	-0.3026	0.004436	0.0444425	Down-regulated
NM_003954	MAP3K14	9020	20.9667	19.5416	15.4546	16.6873	-0.302	0.00094	0.014762	Down-regulated
NM_033386	MICALL1	85377	31.0073	28.0897	22.6442	24.3412	-0.301	0.000595	0.0105059	Down-regulated
NM_001320034	GRAMD1A	57655	33.9125	34.5435	26.8017	27.6217	-0.3006	0.000385	0.0074426	Down-regulated
NM_080686	PRRC2A	7916	41.092	36.7256	30.5586	31.5528	-0.3006	5.97E-05	0.0017383	Down-regulated
NM_175866	UHMK1	127933	18.3765	20.5162	15.5017	15.4869	-0.2999	0.000713	0.0119938	Down-regulated
NM_012401	PLXNB2	23654	132.257	117.612	97.4171	102.422	-0.2991	1.68E-05	0.0006476	Down-regulated
NM_017758	ALKBH5	54890	26.998	23.6285	20.0492	20.1187	-0.2983	0.00253	0.0300364	Down-regulated
NM_018677	ACSS2	55902	21.8233	21.4773	17.5697	16.8473	-0.2976	0.001547	0.0210744	Down-regulated
NM_016201	AMOTL2	51421	73.1166	69.8158	55.0498	59.4912	-0.2972	5.41E-06	0.000256	Down-regulated
NM_003118	SPARC	6678	1172.28	1219	948.458	972.576	-0.2964	1.20E-09	1.73E-07	Down-regulated
NM_005902	SMAD3	4088	136.826	145.427	113.642	113.155	-0.2962	2.86E-07	2.23E-05	Down-regulated
NM_000158	GBE1	2632	54.279	56.5087	46.1631	42.2741	-0.2961	0.000375	0.0073085	Down-regulated
NM_013279	MYRF	745	84.3709	74.5296	62.8879	64.3857	-0.2959	4.42E-05	0.0013852	Down-regulated
NM_001709	BDNF	627	17.8428	18.8775	14.0661	15.1589	-0.2959	0.002728	0.0313648	Down-regulated
NM_000189	HK2	3099	16.8378	16.8161	13.7421	13.23	-0.2949	9.46E-05	0.002509	Down-regulated
NM_002473	MYH9	4627	282.9	288.444	225.269	234.982	-0.2949	2.38E-10	4.21E-08	Down-regulated
NM_012088	PGLS	25796	90.0122	88.7342	71.575	70.0409	-0.2932	0.000797	0.0130259	Down-regulated
NM_018425	PI4K2A	55361	12.2137	12.1301	9.59274	9.82024	-0.293	0.003294	0.0357844	Down-regulated
NR_073024	RPL13A	23521	107.407	97.1623	76.7923	85.1295	-0.2927	0.002941	0.032918	Down-regulated
NM_001329451	KANK2	25959	12.4826	12.2693	9.38157	10.3761	-0.2915	0.003774	0.039356	Down-regulated
NM_001184977	UQCCL1	55245	35.4215	36.8659	29.385	28.3532	-0.2905	0.001505	0.0206685	Down-regulated
NM_017582	UBE2Q1	55585	37.9104	34.7687	28.2504	29.956	-0.2901	0.000736	0.0122899	Down-regulated
NM_002859	PXN	5829	84.6843	80.6061	67.6805	65.5208	-0.2897	9.21E-07	5.88E-05	Down-regulated
NM_018201	TBC1D13	54662	12.8492	12.4784	10.2707	9.9561	-0.2895	0.004432	0.0444425	Down-regulated
NM_001008410	STEAP3	55240	14.8723	14.1815	11.6157	11.6484	-0.2872	0.003034	0.0336559	Down-regulated
NM_001113491	9-Sep	10801	271.558	235.298	201.643	206.593	-0.2863	0.00011	0.0028144	Down-regulated
NM_001080950	MYO1C	4641	102.982	93.2265	82.3982	75.7235	-0.286	0.000151	0.003601	Down-regulated
NM_006517	SLC16A2	6567	13.7236	13.2913	10.6822	10.98	-0.2855	0.003145	0.0344352	Down-regulated
NM_022772	EPS8L2	64787	116.549	96.5215	83.867	86.8816	-0.2855	0.002643	0.0308268	Down-regulated
NM_001195483	SLC12A8	84561	26.5202	27.478	21.7689	21.747	-0.2836	0.000756	0.0125782	Down-regulated
NM_004207	SLC16A3	9123	329.773	275.286	239.51	246.102	-0.2835	0.001191	0.017483	Down-regulated
NM_020524	PBXIP1	57326	16.7274	16.8177	13.15	13.7675	-0.2832	0.004389	0.0440953	Down-regulated
NM_006442	DRAP1	10589	481.237	394.122	338.435	357.379	-0.2831	0.003542	0.0376555	Down-regulated

## TGFβ1 induces cisplatin resistance of NSCLC by G6PD

NM_004429	EFNB1	1947	75.1103	62.4302	53.3656	56.9493	-0.2829	0.004699	0.0461632	Down-regulated
NM_001144759	PHLDB1	23187	48.0073	42.028	35.1727	37.4938	-0.2814	0.001009	0.0154511	Down-regulated
NM_006745	MSMO1	6307	60.5183	63.2	50.956	48.8346	-0.281	0.000466	0.0085801	Down-regulated
NM_002276	KRT19	3880	4714.12	4081.26	3406.48	3667.22	-0.2807	0.000249	0.0053669	Down-regulated
NM_005628	SLC1A5	6510	117.596	101.301	84.2777	92.0856	-0.2795	0.002021	0.0254519	Down-regulated
NM_130787	AP2A1	160	57.5195	50.5914	41.8965	45.3041	-0.2793	0.001902	0.0243944	Down-regulated
NM_019884	GSK3A	2931	39.9409	37.9122	30.0302	32.6397	-0.2787	0.002892	0.0326416	Down-regulated
NM_000903	NQO1	1728	154.513	163.538	131.905	125.902	-0.2785	3.39E-05	0.0011573	Down-regulated
NM_002467	MYC	4609	83.634	74.9556	62.5942	65.5127	-0.2781	0.000595	0.0105059	Down-regulated
NM_004996	ABCC1	4363	30.978	32.0275	25.8517	25.3558	-0.2779	2.63E-05	0.0009613	Down-regulated
NM_006015	ARID1A	8289	19.4068	17.815	14.664	15.5368	-0.2773	0.000434	0.0081039	Down-regulated
NM_032387	WNK4	65266	19.2114	19.3103	15.7357	15.4642	-0.2761	0.001171	0.0172326	Down-regulated
NM_001458	FLNC	2318	104.682	99.2929	78.5084	87.5435	-0.2756	5.87E-05	0.0017202	Down-regulated
NM_032466	ASPH	444	48.228	49.1255	40.5875	38.5312	-0.275	0.000106	0.0027484	Down-regulated
NM_022153	C10orf54	64115	28.2741	26.9874	22.4811	22.4538	-0.2749	0.000135	0.0033046	Down-regulated
NM_001018003	SORBS3	10174	78.768	68.2561	57.9615	60.6718	-0.2747	0.003261	0.0355954	Down-regulated
NM_014389	PELP1	27043	17.9377	17.7029	14.0502	14.8338	-0.2729	0.003523	0.0375401	Down-regulated
NM_004095	EIF4EBP1	1978	377.103	325.267	269.714	292.186	-0.2727	0.002649	0.0308434	Down-regulated
NR_135828	LOC101927751	1E+08	688.039	733.278	577.23	582.781	-0.2724	1.23E-06	7.57E-05	Down-regulated
NM_006369	LRRC41	10489	38.7744	38.2699	30.8374	31.8348	-0.2713	0.000385	0.0074426	Down-regulated
NM_183001	SHC1	6464	73.5904	63.2182	54.6683	56.381	-0.2709	0.002018	0.0254519	Down-regulated
NM_004924	ACTN4	81	478.508	418.724	352.968	378.37	-0.2699	0.000271	0.0057318	Down-regulated
NM_014866	SEC16A	9919	8.34404	8.56846	7.02178	6.77572	-0.2676	0.002468	0.0293324	Down-regulated
NM_004718	COX7A2L	9167	126.804	121.992	99.7544	101.985	-0.2671	0.000345	0.0068363	Down-regulated
NM_058243	BRD4	23476	16.3551	16.3622	12.8978	13.7941	-0.2664	0.002312	0.0281136	Down-regulated
NM_002957	RXRA	6256	20.282	18.4968	15.1119	16.5239	-0.2648	0.004355	0.0439185	Down-regulated
NM_001064	TKT	7086	207.952	193.146	159.433	169.1	-0.2625	4.03E-05	0.0013039	Down-regulated
NM_004427	PHC2	1912	80.768	73.2161	60.2307	65.5221	-0.2625	0.001679	0.0224599	Down-regulated
NM_030662	MAP2K2	5605	152.548	131.79	110.746	120.519	-0.2623	0.004403	0.0441996	Down-regulated
NM_003088	FSCN1	6624	347.209	285.387	249.766	266.041	-0.2621	0.004709	0.0462099	Down-regulated
NM_000088	COL1A1	1277	230.174	231.893	187.34	193.625	-0.2617	1.56E-09	2.11E-07	Down-regulated
NM_001037165	FOXK1	221937	13.3381	13.0259	10.6295	11.0578	-0.2612	0.000163	0.0038303	Down-regulated
NM_014521	SH3BP4	23677	20.3463	20.1021	16.9987	16.209	-0.2601	0.001115	0.0166712	Down-regulated
NM_002627	PFKP	5214	90.1275	88.9271	76.3021	70.6637	-0.2596	0.000229	0.0050058	Down-regulated
NM_001130040	SHC1	6464	128.631	110.103	98.6173	97.3329	-0.2572	0.001811	0.0237588	Down-regulated
NM_007260	LYPLA2	11313	60.0822	56.314	45.9239	49.2013	-0.256	0.004791	0.0468098	Down-regulated
NM_002224	ITPR3	3710	28.3185	28.7399	23.8436	23.3376	-0.2557	1.42E-05	0.0005679	Down-regulated
NM_000175	GPI	2821	72.5825	66.0507	58.9496	55.2317	-0.2557	0.000604	0.0106163	Down-regulated
NM_000308	CTSA	5476	56.582	59.3841	47.1402	48.4048	-0.2549	0.000505	0.0092012	Down-regulated
NM_005412	SHMT2	6472	139.079	119.483	105.773	106.597	-0.2537	0.002634	0.0307724	Down-regulated
NM_001131016	CIZ1	25792	38.9374	36.1934	31.305	30.5833	-0.2527	0.001834	0.02381	Down-regulated
NM_002541	OGDH	4967	53.4972	54.3405	43.286	45.9892	-0.2511	0.000183	0.004246	Down-regulated
NM_002292	LAMB2	3913	56.0087	53.5941	44.7895	46.1513	-0.2504	7.56E-06	0.0003306	Down-regulated
NM_033251	RPL13	6137	100.182	84.0956	77.0628	75.0133	-0.249	0.004952	0.0480348	Down-regulated
NM_020448	NIPAL3	57185	19.669	19.2579	16.2979	15.9931	-0.246	0.001266	0.0182458	Down-regulated
NM_001849	COL6A2	1292	76.6455	66.7038	57.8575	60.7426	-0.2458	0.003817	0.039716	Down-regulated
NM_001084	PLOD3	8985	48.5438	43.2089	38.5909	37.4108	-0.243	0.005059	0.048606	Down-regulated
NM_030981	RAB1B	81876	171.02	150.846	127.458	139.141	-0.2409	0.004488	0.0446011	Down-regulated
NM_003681	PDXK	8566	20.8593	21.4815	17.4213	17.9171	-0.2405	0.000655	0.0113189	Down-regulated
NM_006310	NPEPPS	9520	31.2231	31.4634	26.4178	25.839	-0.2404	0.000776	0.0127896	Down-regulated
NM_005572	LMNA	4000	292.944	264.407	219.093	243.674	-0.2397	0.002298	0.0280022	Down-regulated
NM_003979	GPRC5A	9052	536.779	587.541	471.457	466.541	-0.239	0.000292	0.0060232	Down-regulated
NM_000314	PTEN	5728	15.9239	14.649	12.287	13.2158	-0.2374	0.004625	0.0457123	Down-regulated
NM_003768	PEA15	8682	301.973	262.478	236.685	233.781	-0.2364	0.001382	0.0194577	Down-regulated
NM_014330	PPP1R15A	23645	61.3567	61.3825	51.4197	51.1304	-0.2344	0.000762	0.0126457	Down-regulated
NM_139279	MCFD2	90411	67.0734	71.0363	59.5003	56.2298	-0.2328	0.00122	0.0178173	Down-regulated
NM_138373	MYADM	91663	73.6385	68.9083	57.5513	61.8108	-0.2317	0.001545	0.0210744	Down-regulated

## TGFβ1 induces cisplatin resistance of NSCLC by G6PD

NM_006148	LASP1	3927	211.106	190.334	164.277	172.849	-0.2303	0.000418	0.0078948	Down-regulated
NM_014246	CELSR1	9620	9.64315	9.33298	8.04824	7.92013	-0.2277	0.002468	0.0293324	Down-regulated
NM_004309	ARHGDI2	396	204.417	199.972	167.523	172.325	-0.2274	1.39E-05	0.0005573	Down-regulated
NM_015060	AVL9	23080	22.202	22.7766	19.1058	18.7915	-0.2273	0.001009	0.0154511	Down-regulated
NM_001012478	U2AF2	11338	125.957	109.785	97.3333	100.751	-0.2253	0.004276	0.043239	Down-regulated
NM_017590	ZC3H7B	23264	31.8052	28.775	25.6278	25.4785	-0.2228	0.003264	0.0355959	Down-regulated
NM_004599	SREBF2	6721	42.645	38.0711	33.3414	34.7132	-0.2227	0.004665	0.0459874	Down-regulated
NM_017670	OTUB1	55611	47.4479	45.3322	39.4262	38.722	-0.221	0.00505	0.0485988	Down-regulated
NM_001543	NDST1	3340	31.7573	32.8687	26.219	28.4548	-0.221	0.002264	0.0277756	Down-regulated
NM_000820	GAS6	2621	530.292	457.531	408.265	427.405	-0.2154	0.004493	0.0446084	Down-regulated
NM_005918	MDH2	4191	101.275	95.838	80.136	86.9054	-0.213	0.004014	0.0411885	Down-regulated
NM_021913	AXL	558	39.8762	39.5992	32.7637	34.8594	-0.2121	0.002021	0.0254519	Down-regulated
NM_000188	HK1	3098	35.9782	36.7184	31.4199	30.3676	-0.2118	0.004757	0.0465973	Down-regulated
NM_015470	RAB11FIP5	26056	39.6194	36.4593	31.8799	32.9456	-0.2085	0.00518	0.0494631	Down-regulated
NM_003062	SLIT3	6586	13.869	14.1524	11.746	12.1825	-0.2081	0.004114	0.0419497	Down-regulated
NM_139179	DAGLB	221955	62.8742	59.3738	51.6141	52.7558	-0.2054	0.002399	0.028817	Down-regulated
NM_030969	TMEM14B	81853	330.82	329.509	281.337	278.38	-0.2047	0.000353	0.006981	Down-regulated
NM_014343	CLDN15	24146	161.398	151.225	129.481	136.606	-0.2025	0.004516	0.0447943	Down-regulated
NM_001913	CUX1	1523	46.6691	44.5124	38.9046	39.2148	-0.2004	0.0048	0.0468098	Down-regulated
NM_007118	TRIO	7204	36.6081	36.3938	32.1064	30.835	-0.1975	0.000223	0.0048918	Down-regulated
NM_013318	PRRC2B	84726	28.3312	28.6952	24.4707	24.7418	-0.1966	0.00025	0.0053826	Down-regulated
NM_001110556	FLNA	2316	253.862	240.085	206.087	220.427	-0.1948	0.000335	0.006735	Down-regulated
NM_014713	LAPTM4A	9741	98.4928	99.7511	84.9668	85.2183	-0.1942	0.003998	0.041163	Down-regulated
NM_004817	TJP2	9414	41.5496	41.3523	34.9051	36.7535	-0.1903	0.003829	0.0397776	Down-regulated
NM_002628	PFN2	5217	137.719	137.724	121.652	115.743	-0.1894	0.003358	0.0362903	Down-regulated
NM_000527	LDLR	3949	100.187	94.7168	86.8253	82.2972	-0.1863	0.001388	0.0194808	Down-regulated
NM_001143998	SEC14L1	6397	42.0118	42.5578	36.3491	37.1019	-0.1853	0.001868	0.0241018	Down-regulated
NM_002086	GRB2	2885	57.5541	58.2109	49.7767	50.7442	-0.1832	0.004181	0.0424718	Down-regulated
NM_130440	PTPRF	5792	617.879	571.936	504.314	531.525	-0.1828	0.000937	0.0147411	Down-regulated
NM_014868	RNF10	9921	71.1506	68.6746	60.42	61.235	-0.182	0.001119	0.0166712	Down-regulated
NM_004938	DAPK1	1612	51.0787	49.978	44.586	43.4954	-0.1812	0.0008	0.0130612	Down-regulated
NM_002087	GRN	2896	208.78	194.234	173.081	177.485	-0.1795	0.001549	0.0210841	Down-regulated
NM_001321704	RPS9	6203	1453.36	1299.53	1184.05	1174.91	-0.1771	0.003281	0.0357072	Down-regulated
NM_005347	HSPA5	3309	275.199	286.936	243.995	247.912	-0.1749	0.000593	0.0104945	Down-regulated
NM_184041	ALDOA	226	751.385	701.863	622.548	644.918	-0.1728	0.000713	0.0119938	Down-regulated
NM_001235	SERPINH1	871	248.68	239.517	214.402	212.777	-0.1721	0.000203	0.0045553	Down-regulated
NM_021009	UBC	7316	401.52	393.1	336.256	362.613	-0.1648	0.003138	0.0343844	Down-regulated
NM_031286	SH3BGR1	83442	302.096	298.426	259.67	265.633	-0.1631	0.003558	0.0377539	Down-regulated
NM_001102	ACTN1	87	172.279	178.984	151.669	158.38	-0.1618	0.004133	0.0421004	Down-regulated
NM_001748	CANP	824	197.924	196.12	175.489	173.362	-0.1582	0.000231	0.005021	Down-regulated
NM_005720	ARPC1B	10095	456.996	457.475	396.6	411.216	-0.1549	0.001566	0.021284	Down-regulated
NM_053275	RPLP0	6175	1346.03	1350.72	1169.58	1224.94	-0.145	0.002393	0.0287861	Down-regulated
NM_004048	B2M	567	2365.91	2290.95	2525.36	2443.62	0.12212	0.002449	0.0292338	Up-regulated
NM_002999	SDC4	6385	256.018	253.088	274.113	277.87	0.1325	0.001699	0.0226375	Up-regulated
NM_002137	HNRNPA2B1	3181	209.191	207.732	224.26	229.76	0.13702	0.001261	0.0182343	Up-regulated
NM_000918	P4HB	5034	315.494	306.03	335.288	351.64	0.15957	0.000966	0.0150409	Up-regulated
NM_002136	HNRNPA1	3178	772.057	785.383	847.144	873.609	0.1619	0.000423	0.0079692	Up-regulated
NM_015238	WWC1	23286	44.1697	43.1747	48.557	48.5253	0.16362	0.001265	0.0182458	Up-regulated
NM_005231	CTTN	2017	129.17	126.435	139.939	143.68	0.16394	0.000676	0.01156	Up-regulated
NM_007173	PRSS23	11098	325.504	331.264	361.481	368.44	0.16559	0.000115	0.0029317	Up-regulated
NM_014502	PRPF19	27339	98.7334	94.7565	106.831	108.736	0.17027	0.003511	0.0375359	Up-regulated
NM_006622	PLK2	10769	205.345	207.662	229.939	231.226	0.17357	0.000143	0.0034596	Up-regulated
NM_018218	USP40	55230	26.7909	26.6092	30.1601	29.8498	0.17812	0.005244	0.049983	Up-regulated
NM_006088	TUBB4B	10383	153.433	143.763	164.597	167.552	0.17819	0.004101	0.0419101	Up-regulated
NM_006937	SUMO2	6613	230.91	221.796	248.755	255.561	0.17968	0.00313	0.0343728	Up-regulated
NM_004404	2-Sep	4735	187	189.141	214.637	210.125	0.18879	5.59E-05	0.0016561	Up-regulated
NM_018947	CYCS	54205	47.556	48.6059	54.0842	54.7398	0.18892	0.000779	0.0128178	Up-regulated

## TGFβ1 induces cisplatin resistance of NSCLC by G6PD

NM_021130	PPIA	5478	667.868	719.254	778.556	788.469	0.18931	0.001753	0.0231455	Up-regulated
NM_001207	BTF3	689	599.341	637.033	692.903	705.305	0.20104	0.001538	0.0210189	Up-regulated
NM_006169	NNMT	4837	253.689	250.524	276.685	296.67	0.20257	0.000872	0.0139996	Up-regulated
NM_015161	ARL6IP1	23204	94.4268	95.4252	109.723	106.892	0.20344	0.000671	0.0115281	Up-regulated
NM_004964	HDAC1	3065	58.7518	61.1922	69.0885	68.5972	0.21011	0.005217	0.0497721	Up-regulated
NM_201442	C1S	716	96.4691	101.926	114.927	113.151	0.21234	0.001064	0.0160887	Up-regulated
NM_178014	TUBB	203068	397.178	357.836	429.687	438.089	0.21385	0.000378	0.0073518	Up-regulated
NM_003400	XPO1	7514	41.1272	42.9224	49.076	47.8298	0.21389	0.001249	0.0181361	Up-regulated
NM_006601	PTGES3	10728	129.186	141.224	156.537	155.489	0.21725	0.00395	0.040803	Up-regulated
NM_032737	LMNB2	84823	69.5504	62.9529	73.5734	79.7722	0.21819	0.003861	0.0399605	Up-regulated
NM_004501	HNRNPU	3192	37.1324	39.9639	43.0232	46.3591	0.21858	0.00448	0.0446011	Up-regulated
NM_004670	PAPSS2	9060	91.6561	99.1997	112.298	108.686	0.21973	0.001719	0.022774	Up-regulated
NM_006342	TACC3	10460	32.2189	32.8661	37.7079	37.7766	0.22242	0.00436	0.0439254	Up-regulated
NM_005381	NCL	4691	228.837	253.335	277.655	281.731	0.22345	0.001969	0.0249347	Up-regulated
NM_001101	ACTB	60	1769.46	1915.24	2078.35	2185.46	0.2242	0.000624	0.0109052	Up-regulated
NM_001539	DNAJA1	3301	50.775	53.5034	61.0111	60.0765	0.22455	0.003759	0.0392934	Up-regulated
NM_001024465	SOD2	6648	344.741	315.292	396.785	364.739	0.22681	0.002045	0.025667	Up-regulated
NM_002271	IPO5	3843	48.1529	51.2984	57.7114	58.0436	0.2269	0.000465	0.0085654	Up-regulated
NM_018269	ADI1	55256	65.9957	65.9648	74.9234	78.3202	0.22784	0.003058	0.0337563	Up-regulated
NM_001733	C1R	715	156.105	147.215	170.968	181.063	0.22821	0.000198	0.0045056	Up-regulated
NM_001291964	AFDN	4301	42.4942	42.7454	49.1887	50.0126	0.22875	5.71E-06	0.0002667	Up-regulated
NM_004339	PTTG1IP	754	190.278	204.056	226.054	232.781	0.22924	0.000334	0.006735	Up-regulated
NM_001357	DHX9	1660	28.4821	29.664	33.6343	34.2865	0.23121	0.001408	0.0196891	Up-regulated
NM_001416	EIF4A1	1973	387.127	411.709	458.137	470.422	0.23121	0.000128	0.0031799	Up-regulated
NM_016284	CNOT1	23019	11.5619	12.2423	14.162	13.7497	0.23294	0.004311	0.0435553	Up-regulated
NM_003064	SLPI	6590	2799.53	2714.68	3092.81	3179.1	0.23372	9.72E-08	8.82E-06	Up-regulated
NM_006464	TGOLN2	10618	26.8288	29.6941	33.2652	33.0717	0.23437	0.004243	0.0430237	Up-regulated
NM_002893	RBBP7	5931	57.9174	61.1192	69.117	70.0446	0.235	0.002847	0.0323669	Up-regulated
NM_014142	NUDT5	11164	22.2737	22.919	26.117	26.8748	0.23515	0.004975	0.0481706	Up-regulated
NM_031157	HNRNPA1	3178	73.6539	73.1757	82.9965	88.568	0.23642	0.001401	0.0196277	Up-regulated
NM_001282667	MICAL2	9645	30.2634	30.2803	34.6925	36.3809	0.2394	0.000119	0.003003	Up-regulated
NM_018976	SLC38A2	54407	79.5926	85.8828	96.4616	97.8931	0.23968	0.000299	0.0061092	Up-regulated
NM_002802	PSMC1	5700	73.7584	76.356	87.0583	88.9841	0.24267	0.00163	0.021956	Up-regulated
NM_004515	ILF2	3608	79.5745	84.9582	98.3578	95.086	0.24314	0.001967	0.0249347	Up-regulated
NM_021103	TMSB10	9168	4147.59	3962.09	4586.06	4575.44	0.24428	3.51E-10	5.84E-08	Up-regulated
NM_018370	DRAM1	55332	45.4163	44.4243	54.1507	51.5998	0.24444	0.000296	0.0060801	Up-regulated
NM_003076	SMARCD1	6602	25.9128	24.9001	29.1889	30.7604	0.24455	0.002659	0.0309317	Up-regulated
NM_016025	METTL9	51108	21.1995	19.8883	24.005	24.5545	0.24563	0.005009	0.0483807	Up-regulated
NM_006888	CALM1	801	32.103	33.659	38.1764	39.6174	0.24845	0.000795	0.0130217	Up-regulated
NM_001124	ADM	133	145.715	139.531	160.171	176.123	0.25042	0.000878	0.0140779	Up-regulated
NM_002129	HMGB2	3148	85.7614	82.4405	95.9032	102.572	0.25126	0.001239	0.0180235	Up-regulated
NM_002748	MAPK6	5597	24.8332	26.3769	30.5658	30.2595	0.25239	0.001652	0.0222036	Up-regulated
NM_016038	SBDS	51119	56.6029	58.2016	67.3448	68.6843	0.25502	0.0018	0.0236442	Up-regulated
NM_002804	PSMC3	5702	107.967	104.607	125.124	126.041	0.25609	5.48E-05	0.001636	Up-regulated
NM_001195532	SPTAN1	6709	14.0521	15.2168	17.4199	17.5196	0.25717	0.001822	0.0237913	Up-regulated
NM_005594	NACA	4666	153.843	165.195	188.097	189.599	0.26018	0.001074	0.0162028	Up-regulated
NM_181575	AUP1	550	61.563	62.1461	72.87	74.1551	0.26036	0.000682	0.0116401	Up-regulated
NM_203499	DDX42	11325	25.4878	27.5305	30.4478	33.2442	0.26435	0.004559	0.0451389	Up-regulated
NM_003754	EIF3F	8665	145.138	150.909	172.078	179.724	0.26472	0.000277	0.0058029	Up-regulated
NM_012073	CCT5	22948	61.289	63.5127	75.2165	73.9506	0.26637	1.80E-05	0.000681	Up-regulated
NM_007100	ATP5I	521	668.792	588.858	701.522	692.767	0.2677	0.001878	0.0242038	Up-regulated
NM_001293	CLNS1A	1207	84.3661	83.1435	99.8122	99.9425	0.26846	0.00023	0.0050143	Up-regulated
NM_003079	SMARCE1	6605	40.3955	41.4435	47.9943	50.2883	0.27104	0.000726	0.0121473	Up-regulated
NM_020150	SAR1A	56681	59.1598	61.5421	71.3069	73.7326	0.27332	6.11E-05	0.0017652	Up-regulated
NM_001127228	CBX1	10951	50.4419	54.6274	62.6259	63.8947	0.27342	0.001262	0.0182343	Up-regulated
NM_016079	CHMP3	51652	28.0929	28.23	33.8048	33.9825	0.27363	0.000354	0.0069888	Up-regulated
NM_004526	MCM2	4171	20.9479	21.0211	24.5643	26.074	0.27366	0.001539	0.0210189	Up-regulated

## TGFβ1 induces cisplatin resistance of NSCLC by G6PD

NM_001135146	SLC39A8	64116	39.3456	39.8361	46.4905	48.7797	0.27382	0.000174	0.0040515	Up-regulated
NM_005733	KIF20A	10112	22.2917	21.8038	25.7558	27.4279	0.27387	0.00133	0.01894	Up-regulated
NM_006908	RAC1	5879	180.387	204.663	227.594	236.44	0.27439	0.000987	0.0152717	Up-regulated
NM_145725	TRAF3	7187	11.4197	10.6064	13.8984	12.7594	0.27443	0.002577	0.0303289	Up-regulated
NM_001710	CFB	629	149.681	159.685	185.161	186.471	0.27463	1.42E-05	0.0005679	Up-regulated
NM_024117	MAPKAP1	79109	18.1995	16.7872	21.8745	20.474	0.27477	0.005161	0.0493267	Up-regulated
NM_018284	GBP3	2635	22.2604	22.1294	28.3518	25.4763	0.27706	0.004827	0.0469067	Up-regulated
NM_002156	HSPD1	3329	242.265	260.41	296.952	308.376	0.27829	2.18E-05	0.0008101	Up-regulated
NM_001032283	TMPO	7112	12.7634	12.5875	15.4439	15.3656	0.28106	0.001928	0.0245867	Up-regulated
NM_001412	EIF1AX	1964	21.343	23.7268	27.3137	27.5008	0.28134	0.002278	0.0278133	Up-regulated
NM_001330218	CCNYL1	151195	27.4805	29.4255	34.5075	34.495	0.28166	0.000514	0.0093203	Up-regulated
NM_021239	RBM25	58517	17.8566	16.7278	20.2591	21.7929	0.28234	0.00171	0.0226815	Up-regulated
NM_032940	POLR2C	5432	27.1568	27.1197	33.4891	32.4565	0.28356	0.003709	0.0389338	Up-regulated
NM_015913	TXNDC12	51060	25.7648	28.1791	33.1128	32.6204	0.28415	0.004017	0.0411885	Up-regulated
NM_001134373	NT5C2	22978	39.0776	38.9465	48.3187	46.2328	0.28445	5.23E-05	0.0015894	Up-regulated
NM_024576	UGFRL1	79627	6.33939	6.73681	7.87514	8.10083	0.28558	0.002333	0.0282152	Up-regulated
NM_015332	NOFCD3	23386	17.523	17.7939	21.667	21.3444	0.28766	0.000217	0.0047831	Up-regulated
NM_002265	KPNB1	3837	71.8347	80.7283	92.3939	93.582	0.28825	0.00034	0.0067872	Up-regulated
NM_003472	DEK	7913	63.2066	68.4631	81.443	78.8473	0.2892	0.000194	0.0044528	Up-regulated
NM_001101662	NRDC	4898	39.8119	46.4987	52.6116	53.1535	0.28937	0.003372	0.0364094	Up-regulated
NM_015294	TRIM37	4591	11.7967	12.2635	14.61	14.9321	0.29443	0.001575	0.0213746	Up-regulated
NM_001042424	WHSC1	7468	12.7787	13.3236	15.8926	16.0792	0.29525	0.000131	0.0032168	Up-regulated
NM_020401	NUP107	57122	10.1482	10.2791	12.9738	12.1388	0.29696	0.001122	0.0166712	Up-regulated
NM_016395	HACD3	51495	33.0299	37.9336	44.8003	42.6846	0.29698	0.003429	0.0368083	Up-regulated
NM_005316	GTF2H1	2965	19.6437	22.0896	26.1268	25.3394	0.2973	0.003955	0.0408155	Up-regulated
NM_001431	EPB41L2	2037	14.0542	15.4993	18.656	17.8222	0.2979	0.003065	0.0337935	Up-regulated
NM_017828	COMMD4	54939	70.2385	68.0438	80.6744	88.136	0.29892	0.002819	0.0321106	Up-regulated
NM_001311	CRIP1	1396	612.598	594.76	715.771	706.847	0.30033	4.36E-06	0.0002195	Up-regulated
NM_002843	PTPRJ	5795	19.8632	22.0248	26.1712	25.4663	0.30148	0.000338	0.0067686	Up-regulated
NM_030798	RCC1L	81554	22.4888	21.7916	26.9771	27.568	0.3016	0.001099	0.0164879	Up-regulated
NM_005610	RBBP4	5928	6.58746	7.1759	8.46824	8.57256	0.30214	0.002275	0.0278133	Up-regulated
NM_001199802	RPL11	6135	775.324	790.007	968.08	911.184	0.30244	2.01E-06	0.0001124	Up-regulated
NM_003751	EIF3B	8662	47.6046	41.4637	55.7875	53.9732	0.30321	0.000636	0.0110755	Up-regulated
NM_004905	PRDX6	9588	127.43	143.929	164.442	169.373	0.30386	0.000582	0.0103553	Up-regulated
NM_015213	DENND5A	23258	16.1437	16.7963	20.7015	19.9752	0.30478	0.000275	0.0057763	Up-regulated
NM_013390	TMEM2	23670	11.7358	13.5327	15.2054	16.245	0.30509	0.004556	0.0451389	Up-regulated
NM_005983	SKP2	6502	43.7688	52.1816	60.8362	58.3851	0.30558	0.003832	0.0397776	Up-regulated
NM_003798	CTNNA1	8727	90.3429	98.8612	114.911	118.143	0.3062	6.90E-05	0.0019442	Up-regulated
NM_001032	RPS29	6235	4590.3	4604.14	5162.77	5099.14	0.30913	9.49E-06	0.0004041	Up-regulated
NM_020362	PITHD1	57095	27.5984	25.912	33.1418	33.1638	0.30961	0.002566	0.0303289	Up-regulated
NM_002645	PIK3C2A	5286	7.89794	7.75627	9.84444	9.57292	0.3104	0.000215	0.0047621	Up-regulated
NM_014865	NCAPD2	9918	25.0845	28.406	32.4937	34.0693	0.31114	0.001028	0.0156295	Up-regulated
NM_001254738	RND3	390	19.283	21.3988	26.4251	24.3649	0.31132	0.004487	0.0446011	Up-regulated
NM_003642	HAT1	8520	30.7005	32.6466	39.5124	39.2664	0.31385	0.001748	0.0231204	Up-regulated
NM_006052	DSCR3	10311	14.5501	14.5664	18.4117	17.8468	0.31393	0.001092	0.0164252	Up-regulated
NM_015068	PEG10	23089	5.69538	5.86431	7.4775	7.03026	0.3165	0.002917	0.0327747	Up-regulated
NM_001379	DNMT1	1786	9.96464	10.2593	13.0667	12.2508	0.31913	0.000899	0.0142913	Up-regulated
NM_005471	GNPDA1	10007	61.6734	63.9498	79.3537	76.6145	0.31983	1.06E-05	0.0004429	Up-regulated
NM_006197	PCM1	5108	4.98557	4.4703	5.9338	5.95904	0.32005	0.002327	0.0281751	Up-regulated
NM_004090	DUSP3	1845	27.2255	27.7227	34.9107	33.5577	0.32134	1.52E-05	0.0005988	Up-regulated
NM_007145	ZNF146	7705	10.3567	10.4815	13.0811	13.0731	0.32138	0.001387	0.0194808	Up-regulated
NM_001135699	YWHAZ	7534	14.1956	15.513	19.032	18.3341	0.32201	0.002922	0.0327747	Up-regulated
NM_031966	CCNB1	891	51.2904	52.1952	63.7191	65.0434	0.32251	1.19E-05	0.0004897	Up-regulated
NM_001172624	NEO1	4756	16.5252	19.7469	23.6013	22.2529	0.32447	0.003136	0.0343844	Up-regulated
NM_002572	PAFAH1B2	5049	18.5591	19.6866	23.9452	24.0531	0.32745	0.000128	0.0031799	Up-regulated
NM_018154	ASF1B	55723	20.394	20.0673	25.7181	25.2266	0.32747	0.002702	0.0311758	Up-regulated
NM_004805	POLR2D	5433	12.9201	12.7979	16.3254	16.2056	0.32768	0.003989	0.0411335	Up-regulated



## TGFβ1 induces cisplatin resistance of NSCLC by G6PD

NM_004550	NDUFS2	4720	32.6387	33.671	41.4916	41.6118	0.32844	0.000179	0.0041569	Up-regulated
NM_016097	IER3IP1	51124	28.0071	24.1784	32.9146	33.0019	0.32916	0.00498	0.0481834	Up-regulated
NM_001032293	ZNF207	7756	36.2687	37.1059	46.2646	45.6302	0.32923	5.48E-05	0.001636	Up-regulated
NM_002717	PPP2R2A	5520	13.9462	14.5578	18.625	17.3407	0.32935	0.000806	0.0131322	Up-regulated
NM_007287	MME	4311	8.80875	8.71355	11.9358	10.3048	0.33027	0.003525	0.0375401	Up-regulated
NM_001156	ANXA7	310	39.1161	43.0339	49.6932	53.9193	0.33121	0.000643	0.0111656	Up-regulated
NM_006469	IVNS1ABP	10625	11.5559	12.5365	14.6219	15.9379	0.33162	0.002062	0.0258139	Up-regulated
NM_003902	FUBP1	8880	18.7251	21.1164	25.1134	25.4123	0.33187	0.002703	0.0311758	Up-regulated
NM_000019	ACAT1	38	24.6822	27.3678	33.6584	32.1701	0.33207	0.001898	0.0243823	Up-regulated
NM_001128148	TFRC	7037	54.2646	60.7746	74.0814	70.7882	0.33231	5.77E-05	0.0017039	Up-regulated
NM_015110	SMC5	23137	5.66895	6.24648	7.45435	7.73095	0.33302	0.003538	0.0376424	Up-regulated
NM_032704	TUBA1C	84790	333.201	346.739	423.877	424.834	0.3348	6.48E-10	1.05E-07	Up-regulated
NM_030796	VOPP1	81552	25.5826	26.843	32.5207	33.6017	0.33518	0.000104	0.002723	Up-regulated
NM_004689	MTA1	9112	25.3622	30.7018	35.3659	36.2191	0.33533	0.004646	0.0458352	Up-regulated
NM_005158	ABL2	27	9.52726	10.5148	11.9561	13.5225	0.33636	0.000813	0.0132038	Up-regulated
NM_024423	DSC3	1825	5.62092	6.61135	7.91273	7.76052	0.33664	0.004697	0.0461632	Up-regulated
NM_001193417	DDX3X	1654	16.2002	17.5936	22.6589	20.3351	0.33757	0.001095	0.0164555	Up-regulated
NM_015033	FNBP1	23048	6.66978	7.19364	8.74178	8.93609	0.33771	0.001825	0.0237978	Up-regulated
NM_002913	RFC1	5981	6.9571	6.06773	8.29771	8.35815	0.3379	0.004367	0.0439511	Up-regulated
NM_004111	FEN1	2237	15.9773	16.1044	20.3949	20.3703	0.33856	0.001329	0.01894	Up-regulated
NM_001002800	SMC4	10051	15.2677	17.5681	22.1092	19.8667	0.33867	0.002434	0.0291132	Up-regulated
NM_003090	SNRPA1	6627	73.7994	73.0112	90.9409	93.2539	0.33904	6.74E-05	0.0019117	Up-regulated
NR_138470	HNRNPA3	220988	16.8881	17.8928	22.4003	21.6958	0.34183	2.88E-05	0.0010297	Up-regulated
NM_015190	DNAJC9	23234	18.6813	19.6605	23.7386	25.0952	0.34219	0.001004	0.015413	Up-regulated
NM_024830	LPCAT1	79888	9.14472	9.05625	11.2408	12.0043	0.34227	0.00143	0.0199192	Up-regulated
NM_003406	YWHAZ	7534	32.7141	38.4138	44.2457	46.6311	0.34247	0.001504	0.0206685	Up-regulated
NM_004705	THAP12	5612	10.1161	9.74188	13.2351	12.2026	0.34317	0.002549	0.0301679	Up-regulated
NM_014683	ULK2	9706	2.95018	2.95483	3.77226	3.81474	0.34413	0.002578	0.0303289	Up-regulated
NM_002940	ABCE1	6059	20.5265	25.0047	28.8074	29.7733	0.34517	0.00319	0.0348562	Up-regulated
NM_182760	SUMF1	285362	12.1868	12.1249	15.2333	16.0096	0.34533	0.004445	0.04445	Up-regulated
NM_006758	U2AF1	7307	79.8551	79.2238	98.3432	102.071	0.34565	0.000105	0.002723	Up-regulated
NM_206963	RARRES1	5918	147.309	161.813	189.416	201.811	0.34579	3.73E-05	0.0012264	Up-regulated
NM_004986	KTN1	3895	16.4297	17.3814	22.228	20.8706	0.34621	0.000141	0.0034194	Up-regulated
NM_001798	CDK2	1017	24.0485	26.4472	34.6927	30.2448	0.3476	0.003034	0.0336559	Up-regulated
NM_002979	SCP2	6342	12.0864	12.8431	15.6399	16.3974	0.34761	0.002162	0.0267059	Up-regulated
NM_033296	MRFAP1	93621	90.6579	91.7509	112.889	117.89	0.34918	4.71E-08	4.58E-06	Up-regulated
NM_005916	MCM7	4176	42.5946	38.4707	48.8083	54.6792	0.34927	0.000208	0.0046532	Up-regulated
NM_001136139	TCF3	6929	9.57765	8.72467	11.1334	12.5291	0.35173	0.002807	0.0320368	Up-regulated
NM_001309840	GNAS	2778	111.268	91.6144	131.229	127.932	0.35221	0.000473	0.0086918	Up-regulated
NM_201414	APP	351	15.1429	15.0073	19.5583	19.0741	0.35429	0.000121	0.00303	Up-regulated
NM_002823	PTMA	5757	497.537	524.638	622.092	672.039	0.35493	3.28E-07	2.48E-05	Up-regulated
NM_006401	ANP32B	10541	91.867	104.779	118.312	134.577	0.35562	0.000955	0.0149462	Up-regulated
NM_030940	ISCA1	81689	22.8027	25.8964	31.513	31.3706	0.35638	0.001642	0.0220985	Up-regulated
NM_002128	HMGB1	3146	41.9607	42.2172	52.9797	54.3653	0.35765	4.27E-09	5.33E-07	Up-regulated
NM_006708	GLO1	2739	18.7763	21.743	25.5394	27.2224	0.35931	0.003677	0.0387152	Up-regulated
NM_004703	RABEP1	9135	7.72942	8.40002	11.1995	9.81635	0.36074	0.002065	0.0258211	Up-regulated
NM_016433	GLTP	51228	21.7456	23.5505	28.5568	29.9201	0.36091	0.00044	0.0081807	Up-regulated
NM_001313998	BECN1	8678	10.6741	11.0472	14.0237	14.3484	0.36196	0.004456	0.0445256	Up-regulated
NM_003815	ADAM15	8751	51.7793	43.6075	56.2089	68.0436	0.36207	0.00271	0.0312282	Up-regulated
NM_000140	FECH	2235	4.18023	4.0701	5.44802	5.2825	0.36218	0.001045	0.015852	Up-regulated
NM_003875	GMPS	8833	25.4515	28.3105	35.0952	34.4076	0.36297	0.000342	0.0068006	Up-regulated
NM_144600	FOPNL	123811	12.2356	11.7503	15.9614	15.3028	0.36517	0.002002	0.0253325	Up-regulated
NM_006609	MAP3K2	10746	4.24826	4.47494	5.75169	5.5659	0.36529	0.000187	0.0043063	Up-regulated
NM_003435	ZNF134	7693	5.92075	6.06798	7.89906	7.74062	0.36723	0.001073	0.0162028	Up-regulated
NM_001042517	DIAPH3	81624	11.2023	11.4287	14.3607	14.9565	0.36755	6.07E-05	0.0017633	Up-regulated
NM_006845	KIF2C	11004	12.6541	13.4557	18.7295	15.6597	0.36913	0.004646	0.0458352	Up-regulated
NM_001017371	SP3	6670	6.2889	6.79195	8.93395	8.17714	0.36933	0.001135	0.0168242	Up-regulated
NM_001921	DCTD	1635	14.9085	17.0616	20.1231	21.9707	0.36985	0.004594	0.0454471	Up-regulated

## TGFβ1 induces cisplatin resistance of NSCLC by G6PD

NM_004856	KIF23	9493	15.9473	17.0222	22.8677	20.1836	0.37022	0.000815	0.0132119	Up-regulated
NM_004889	ATP5J2	9551	243.429	241.965	291.925	318.701	0.37118	0.000143	0.0034596	Up-regulated
NM_014463	LSM3	27258	110.947	117.312	143.194	148.687	0.37132	0.000199	0.0045172	Up-regulated
NM_001127371	CDCA7L	55536	8.8731	8.15995	10.9371	11.476	0.37183	0.003407	0.0366114	Up-regulated
NM_001202543	CUX1	1523	5.54115	6.78875	7.81339	8.50878	0.3768	0.002043	0.025667	Up-regulated
NM_018434	RNF130	55819	14.4833	17.0361	20.9117	20.8045	0.37735	0.003083	0.0339255	Up-regulated
NM_000598	IGFBP3	3486	120.104	123.162	152.533	162.063	0.37894	1.37E-09	1.93E-07	Up-regulated
NM_004436	ENSA	2029	52.5246	43.8955	63.1592	62.9007	0.38071	0.000749	0.012484	Up-regulated
NM_022132	MCCC2	64087	17.4176	19.3413	23.1822	25.1028	0.38141	0.000255	0.0054437	Up-regulated
NM_002582	PARN	5073	11.449	12.5044	16.4668	15.2666	0.38621	0.000896	0.0142867	Up-regulated
NM_001128930	ENTPD4	9583	5.0029	5.86732	7.54136	7.01071	0.38669	0.003045	0.0337119	Up-regulated
NM_002106	H2AFZ	3015	199.576	215.886	260.868	277.837	0.38691	6.05E-06	0.0002788	Up-regulated
NM_003390	WEE1	7465	6.29195	7.07552	8.57302	9.39333	0.38757	0.004967	0.0481414	Up-regulated
NM_001099285	PTMA	5757	48.806	57.6805	65.9018	75.8091	0.38853	0.002906	0.0326965	Up-regulated
NM_001144772	NSMAF	8439	5.28565	5.25929	7.0657	7.08647	0.38901	0.003693	0.0388075	Up-regulated
NM_002266	KPNA2	3838	69.1812	75.1933	97.4147	91.6065	0.38942	5.01E-06	0.0002422	Up-regulated
NM_006461	SPAG5	10615	10.2893	10.6438	13.4345	14.2416	0.38971	0.00019	0.0043734	Up-regulated
NM_001112736	FAM208A	23272	6.34741	7.82188	9.49079	9.48092	0.38982	0.001833	0.02381	Up-regulated
NM_032223	PCNX3	399909	9.12915	7.23245	10.6449	11.2329	0.38996	0.002005	0.0253408	Up-regulated
NM_005342	HMGB3	3149	8.022	8.96935	12.1498	10.6742	0.39056	0.003162	0.0345849	Up-regulated
NM_080593	HIST1H2BK	85236	64.1858	61.4228	81.3248	82.4174	0.39079	0.000105	0.002723	Up-regulated
NM_002192	INHBA	3624	4.66009	4.27353	6.04803	5.86891	0.39122	0.000887	0.0141833	Up-regulated
NM_002916	RFC4	5984	15.0226	15.2613	19.9303	20.6377	0.39148	0.003804	0.0396282	Up-regulated
NM_007111	TFDP1	7027	35.159	38.0182	48.0988	48.0552	0.39235	5.00E-06	0.0002422	Up-regulated
NM_005517	HMG2	3151	166.121	177.103	222.128	225.908	0.39308	1.79E-09	2.39E-07	Up-regulated
NM_001308176	CDH2	1000	0.002195	0.049674	7.58609	17.9732	0.39311	0.003762	0.0392934	Up-regulated
NM_007192	SUPT16H	11198	29.6966	32.8967	41.5511	40.8597	0.39325	3.40E-06	0.0001787	Up-regulated
NM_001039348	EFEMP1	2202	21.4028	21.1722	27.4045	28.6277	0.39461	4.16E-06	0.0002115	Up-regulated
NM_001164803	RBMX	27316	10.5099	10.6416	13.973	14.444	0.39579	0.002278	0.0278133	Up-regulated
NM_182746	MCM4	4173	14.778	15.1353	19.6596	19.8085	0.39806	1.23E-06	7.57E-05	Up-regulated
NM_004157	PRKAR2A	5576	4.48457	5.17473	6.30933	6.71914	0.39866	0.00167	0.022362	Up-regulated
NM_015261	NCAPD3	23310	5.84783	6.43995	8.08846	8.39382	0.40203	0.000437	0.0081392	Up-regulated
NM_001136108	R3HCC1	203069	19.7785	16.9305	23.9495	25.4572	0.40213	0.001965	0.0249347	Up-regulated
NM_015577	RAI14	26064	26.1407	33.4518	40.7766	39.7383	0.40367	0.00108	0.0162735	Up-regulated
NM_001256550	MPP5	64398	5.70021	4.5068	6.94953	7.01818	0.40751	0.003572	0.0378619	Up-regulated
NR_002315	H3F3AP4	440926	67.4646	73.1869	94.4803	91.9175	0.40875	3.47E-05	0.0011682	Up-regulated
NM_057161	KLHDC3	116138	26.4155	24.4343	33.1881	34.6649	0.40934	2.92E-05	0.00104	Up-regulated
NM_004733	SLC33A1	9197	5.5852	5.71227	7.1378	8.37081	0.41045	0.0034	0.0365655	Up-regulated
NM_145185	MAP2K7	5609	7.62101	6.91728	9.2824	10.5537	0.41127	0.00184	0.0238361	Up-regulated
NM_030821	PLA2G12A	81579	6.18141	6.7765	9.20744	8.3917	0.41287	0.000592	0.0104945	Up-regulated
NM_001018006	TPM1	7168	285.941	306.832	391.813	392.622	0.41377	7.52E-11	1.56E-08	Up-regulated
NM_005246	FER	2241	2.11568	2.09672	2.89216	2.81981	0.414	0.000338	0.0067684	Up-regulated
NM_001172681	ZNF641	121274	5.00511	5.63908	6.94619	7.67934	0.41531	0.002365	0.0285071	Up-regulated
NM_005548	KARS	3735	48.4706	51.4765	63.0086	70.9896	0.4154	2.38E-05	0.0008768	Up-regulated
NM_001440	EXTL3	2137	6.13406	7.21825	8.69938	9.5826	0.4187	0.000894	0.0142734	Up-regulated
NM_004500	HNRNPC	3183	74.1633	66.8826	102.507	87.381	0.41924	2.14E-05	0.0007996	Up-regulated
NM_001206999	CIT	11113	2.66485	3.09759	3.85012	4.08219	0.41964	0.001707	0.0226811	Up-regulated
NM_001363	DKC1	1736	36.593	37.8889	47.8799	51.9358	0.41985	1.22E-06	7.57E-05	Up-regulated
NM_001033	RRM1	6240	29.7577	33.1688	41.5879	43.1223	0.42066	6.25E-06	0.0002859	Up-regulated
NM_001127671	LIFR	3977	7.06755	8.39897	10.3647	10.7078	0.42249	0.000157	0.0037158	Up-regulated
NM_000636	SOD2	6648	407.187	445.862	581.579	560.079	0.42326	2.85E-10	4.82E-08	Up-regulated
NM_001286665	POSTN	10631	24.7528	31.453	41.6895	36.0508	0.42369	0.001922	0.0245376	Up-regulated
NR_104285	CAST	831	10.7668	11.3592	15.0735	15.4448	0.42528	0.001843	0.0238361	Up-regulated
NM_175610	TJP1	7082	4.48291	4.20226	6.49282	5.47883	0.42608	0.000848	0.013646	Up-regulated
NM_001031835	PHKB	5257	6.80841	7.87961	10.2755	9.85904	0.42634	0.000342	0.0068006	Up-regulated
NM_018137	PRMT6	55170	7.11385	7.22321	9.75722	10.0829	0.42948	0.001362	0.0192513	Up-regulated
NM_022346	NCAPG	64151	4.77766	5.96879	7.67096	7.39754	0.43037	0.003083	0.0339255	Up-regulated
NM_014220	TM4SF1	4071	149.469	152.926	202.004	202.438	0.43132	9.85E-14	3.00E-11	Up-regulated

## TGFβ1 induces cisplatin resistance of NSCLC by G6PD

NM_000194	HPRT1	3251	15.9742	18.2384	23.31	24.0917	0.43167	0.001754	0.0231455	Up-regulated
NM_003905	NAE1	8883	28.3578	31.1757	42.0852	39.0519	0.43222	7.08E-05	0.0019729	Up-regulated
NM_001980	STX2	2054	6.19558	5.06461	8.07165	7.74412	0.43294	0.003494	0.0374301	Up-regulated
NM_006082	TUBA1B	10376	562.011	572.581	751.942	764.162	0.43324	6.13E-22	3.96E-19	Up-regulated
NM_001164758	PRKAR1B	5575	16.5578	15.0564	22.228	21.0098	0.43461	6.28E-05	0.001806	Up-regulated
NM_001497	B4GALT1	2683	22.9711	25.4201	32.5493	33.2455	0.43537	1.30E-06	7.83E-05	Up-regulated
NM_006231	POLE	5426	4.11804	3.9083	5.55678	5.4461	0.43594	4.40E-05	0.0013852	Up-regulated
NM_001278461	COBLL1	22837	7.07358	8.40358	10.4643	10.8643	0.43693	0.000116	0.0029495	Up-regulated
NM_024790	CSPP1	79848	2.71855	2.5776	3.63508	3.92448	0.4372	0.00509	0.0487722	Up-regulated
NM_001071	TYMS	7298	30.2895	33.6035	46.1245	41.6536	0.43882	0.000158	0.0037213	Up-regulated
NM_002358	MAD2L1	4085	21.1433	20.1516	28.1682	28.5857	0.44043	0.000155	0.0036835	Up-regulated
NM_152407	GRPEL2	134266	3.51027	3.87069	5.25318	5.20547	0.44187	0.002885	0.0326275	Up-regulated
NM_022071	SH2D4A	63898	6.55674	6.03841	9.47051	8.23445	0.44345	0.001426	0.0198981	Up-regulated
NM_001293179	PRSS23	11098	4.78791	4.65067	6.06498	7.3418	0.44367	0.002859	0.0324322	Up-regulated
NM_005192	CDKN3	1033	24.5081	26.2703	37.0108	34.0566	0.44505	0.001935	0.0246381	Up-regulated
NM_018087	NDC1	55706	6.66627	6.9682	9.40296	9.42564	0.44532	3.59E-05	0.0011991	Up-regulated
NM_002097	GTF3A	2971	19.7627	19.5205	26.883	27.4389	0.44538	0.000195	0.0044623	Up-regulated
NM_031372	HNRNPDL	9987	24.0891	29.3064	34.7485	39.6898	0.44558	0.000298	0.0060947	Up-regulated
NM_032303	HSDL2	84263	11.8848	12.813	16.418	17.7095	0.44573	4.70E-05	0.0014697	Up-regulated
NM_003318	TTK	7272	5.70767	4.88825	7.60702	7.47598	0.44797	0.002617	0.0306007	Up-regulated
NM_005687	FARSB	10056	12.8674	15.9744	19.8631	20.9267	0.45124	0.001116	0.0166712	Up-regulated
NM_000791	DHFR	1719	12.5816	14.4793	18.3579	19.2784	0.45152	6.10E-05	0.0017652	Up-regulated
NM_004523	KIF11	3832	6.72943	8.0585	10.4717	10.3222	0.4525	0.000372	0.0072721	Up-regulated
NM_005441	CHAF1B	8208	7.16601	7.39736	10.2981	10.4202	0.45408	0.001362	0.0192513	Up-regulated
NM_001083614	EARS2	124454	4.85302	5.06052	6.88521	7.09703	0.45419	0.000528	0.0095412	Up-regulated
NM_003404	YWHAB	7529	6.09447	5.26403	7.94659	8.18244	0.4548	0.001306	0.0187206	Up-regulated
NM_002945	RPA1	6117	19.6619	22.7146	29.4954	29.329	0.456	8.12E-06	0.0003507	Up-regulated
NM_006690	MMP24	10893	18.0989	17.1638	23.4451	25.1637	0.45694	1.18E-07	1.03E-05	Up-regulated
NM_006101	NDC80	10403	11.8666	13.0014	18.3163	16.7011	0.4577	0.000397	0.0075746	Up-regulated
NM_014997	KLHDC10	23008	4.42455	4.74402	6.62224	6.24604	0.45893	8.58E-05	0.0023139	Up-regulated
NM_001114092	THUMPD3	25917	3.29006	3.53909	5.05366	4.84543	0.45898	0.003108	0.0341581	Up-regulated
NM_002894	RBBP8	5932	5.98095	6.6098	9.09863	8.78299	0.45901	0.00065	0.0112749	Up-regulated
NM_005016	PCBP2	5094	33.0579	28.3807	45.7646	40.0506	0.46089	3.16E-05	0.0011024	Up-regulated
NM_001199341	RPL17	6139	79.8022	84.3746	111.529	113.936	0.46251	3.01E-06	0.0001606	Up-regulated
NM_001113378	FANCI	55215	8.11011	10.5062	13.4714	13.2146	0.46259	0.001036	0.0157424	Up-regulated
NM_005563	STMN1	3925	50.6288	51.4666	70.7295	69.8331	0.46364	2.03E-08	2.25E-06	Up-regulated
NM_018179	ATF7IP	55729	5.25772	4.84506	7.23624	6.86989	0.46373	3.61E-06	0.0001869	Up-regulated
NM_199413	PRC1	9055	18.3309	15.5267	23.3368	24.1007	0.46542	2.40E-05	0.0008799	Up-regulated
NM_018131	CEP55	55165	14.0629	15.4687	20.9487	20.4758	0.46635	2.65E-05	0.000964	Up-regulated
NM_001316	CSE1L	1434	26.2464	28.6571	38.4404	37.9095	0.46857	6.78E-08	6.41E-06	Up-regulated
NM_004701	CCNB2	9133	31.7719	36.8865	48.5124	48.2374	0.47204	4.78E-05	0.0014832	Up-regulated
NM_012405	ICMT	23463	14.6833	15.4474	21.021	21.0741	0.47536	1.90E-08	2.12E-06	Up-regulated
NM_006016	CD164	8763	43.6097	45.5091	62.4694	61.3095	0.47587	6.62E-12	1.58E-09	Up-regulated
NM_003368	USP1	7398	11.4213	11.879	16.0995	16.6388	0.47617	9.13E-07	5.86E-05	Up-regulated
NM_184043	ALDOA	226	31.94	37.0997	47.5287	50.3137	0.47763	5.30E-05	0.0016004	Up-regulated
NM_001256378	MCMBP	79892	4.04756	4.9049	6.62213	6.46354	0.47805	0.001317	0.0188533	Up-regulated
NM_012112	TPX2	22974	27.4806	28.8826	38.8261	39.8629	0.47815	8.83E-10	1.34E-07	Up-regulated
NM_018685	ANLN	54443	33.8087	37.4075	50.4683	49.1731	0.47824	6.20E-09	7.49E-07	Up-regulated
NM_031217	KIF18A	81930	4.125	4.8047	6.95156	6.24665	0.47982	0.00228	0.0278133	Up-regulated
NM_175748	UBR7	55148	2.91684	3.29315	4.83869	4.46961	0.4801	0.003725	0.0390691	Up-regulated
NM_007057	ZWINT	11130	16.0968	13.2071	25.0289	18.7976	0.4807	0.004012	0.0411885	Up-regulated
NM_182649	PCNA	5111	26.2532	24.6219	36.2228	35.6299	0.48232	1.68E-05	0.0006476	Up-regulated
NM_015560	OPA1	4976	3.18906	3.14719	4.32536	4.8619	0.48695	0.000271	0.0057318	Up-regulated
NM_022121	PERP	64065	20.2664	21.7414	29.4592	29.7567	0.48795	5.50E-09	6.71E-07	Up-regulated
NM_017975	ZWILCH	55055	8.24835	9.15956	12.5964	12.4774	0.49029	5.83E-05	0.0017156	Up-regulated
NM_194454	KRIT1	889	3.88646	5.28099	6.88501	6.95299	0.49052	0.002756	0.0316222	Up-regulated
NM_005915	MCM6	4175	10.289	11.5827	15.4185	15.9069	0.49068	1.25E-05	0.0005094	Up-regulated
NM_021927	GUF1	60558	3.99591	4.74414	6.12192	6.87595	0.4925	0.001174	0.0172527	Up-regulated

## TGFβ1 induces cisplatin resistance of NSCLC by G6PD

NM_001145966	MKI67	4288	1.65771	1.55561	2.2867	2.40757	0.49628	0.000166	0.003887	Up-regulated
NM_199161	SAA1	6288	170.343	131.276	210.648	215.385	0.49735	9.56E-05	0.0025235	Up-regulated
NM_017779	DEPDC1	55635	4.47587	5.67821	7.27088	7.84624	0.49742	0.001021	0.0155699	Up-regulated
NM_030797	FAM49A	81553	5.63812	6.02114	9.31743	7.78992	0.49792	0.000267	0.0056798	Up-regulated
NM_005154	USP8	9101	4.31226	3.8616	5.88464	6.00521	0.49802	6.98E-05	0.0019504	Up-regulated
NM_001037501	NBPF8	728841	3.2086	2.32126	4.17997	4.38939	0.49978	0.004488	0.0446011	Up-regulated
NM_014736	KIAA0101	9768	30.1113	30.3125	42.5679	43.5776	0.50153	3.88E-07	2.82E-05	Up-regulated
NM_001424	EMP2	2013	3.51306	3.87186	5.13701	5.79477	0.50188	0.000402	0.0076633	Up-regulated
NM_016312	WBP11	51729	14.6275	17.0291	22.7498	23.1721	0.50397	2.33E-05	0.00086	Up-regulated
NM_003218	TERF1	7013	5.2001	5.19946	7.83932	7.58914	0.50439	0.000458	0.0084581	Up-regulated
NM_001010851	ZNF766	90321	3.50437	4.40053	6.19173	6.07048	0.50682	0.00333	0.0360922	Up-regulated
NM_016343	CENPF	1063	3.28553	4.15593	5.49163	5.52688	0.50683	0.000215	0.0047624	Up-regulated
NM_012308	KDM2A	22992	4.52045	3.73833	6.2333	5.89606	0.50858	7.44E-05	0.0020629	Up-regulated
NM_014077	FAM32A	26017	34.0447	34.8859	52.836	46.6536	0.51003	4.01E-06	0.0002046	Up-regulated
NM_021067	GINS1	9837	6.34323	5.88823	9.2136	8.80304	0.51211	8.36E-05	0.0022713	Up-regulated
NM_014584	ERO1A	30001	9.98368	11.2285	15.4343	15.2956	0.51286	5.85E-07	3.99E-05	Up-regulated
NM_001286734	CENPE	1062	2.33825	2.32611	3.60364	3.31075	0.5166	8.50E-05	0.0022986	Up-regulated
NM_017519	ARID1B	57492	0.986295	0.998416	1.36288	1.87008	0.52119	0.005085	0.0487706	Up-regulated
NM_001079818	ITGA6	3655	2.63568	2.3347	4.06338	3.54515	0.52235	0.000787	0.0129107	Up-regulated
NM_080668	CDCA5	113130	11.0443	9.68372	15.0812	15.5682	0.52434	2.18E-05	0.0008105	Up-regulated
NM_025075	THOC7	80145	40.3547	43.4173	63.7804	58.4658	0.52443	7.02E-06	0.0003095	Up-regulated
NM_020824	ARHGAP21	57584	8.28138	9.66645	13.0976	13.2755	0.5256	1.60E-06	9.14E-05	Up-regulated
NM_004336	BUB1	699	11.9328	11.8772	16.8853	17.8163	0.5267	6.85E-08	6.43E-06	Up-regulated
NM_015185	ARHGEF9	23229	2.09841	1.8708	3.35059	2.87902	0.52694	0.001831	0.02381	Up-regulated
NM_004237	TRIP13	9319	9.04347	9.17473	13.9323	13.1535	0.52792	3.43E-05	0.0011613	Up-regulated
NM_002388	MCM3	4172	14.963	16.945	22.9739	23.8994	0.52888	1.24E-06	7.60E-05	Up-regulated
NM_001092	ABR	29	7.56371	9.21215	12.5273	12.5061	0.52988	3.07E-05	0.0010812	Up-regulated
NM_020675	SPC25	57405	8.39765	9.13933	13.2757	14.2055	0.53067	0.001531	0.0209901	Up-regulated
NM_001006622	WDR33	55339	2.48249	2.79689	4.25081	4.2145	0.53072	0.002949	0.0329441	Up-regulated
NM_021163	RBAK	57786	4.17492	4.25109	6.20202	6.22725	0.53074	1.77E-06	0.0001003	Up-regulated
NM_001973	ELK4	2005	1.95559	2.0814	3.13556	2.89742	0.53168	2.68E-05	0.0009722	Up-regulated
NM_001165412	NFKB1	4790	4.41137	7.07096	9.56629	9.21746	0.53205	0.003757	0.0392934	Up-regulated
NM_004390	CTSH	1512	26.066	26.5579	38.339	38.7523	0.53505	2.17E-07	1.74E-05	Up-regulated
NM_182811	PLCG1	5335	2.31767	2.22291	3.20405	3.96884	0.53618	0.001472	0.0203301	Up-regulated
NM_001145299	EXOC7	23265	2.05902	2.44962	3.91004	3.33057	0.53794	0.002054	0.025748	Up-regulated
NM_198847	FAM111A	63901	2.51581	2.93223	4.99301	3.973	0.53913	0.003383	0.0364205	Up-regulated
NM_001321191	RUVBL2	10856	38.0702	27.5751	49.1211	50.4832	0.53926	0.000147	0.0035063	Up-regulated
NM_001067	TOP2A	7153	41.1768	45.708	66.1097	61.1633	0.53947	2.53E-10	4.41E-08	Up-regulated
NM_198335	GANAB	23193	10.7889	12.9114	18.5492	17.0583	0.54005	1.74E-05	0.0006633	Up-regulated
NM_001297704	ADGRL2	23266	9.71259	9.84521	14.3176	14.4363	0.54517	1.37E-10	2.60E-08	Up-regulated
NM_052917	GALNT13	114805	2.23423	2.60828	3.80263	3.74926	0.54651	0.000433	0.0080949	Up-regulated
NM_001809	CENPA	1058	6.86081	8.66526	11.9144	13.6125	0.54712	0.002644	0.0308268	Up-regulated
NM_001080415	U2SURP	23350	3.23961	4.87669	6.91217	6.24223	0.55048	0.001488	0.0205036	Up-regulated
NM_001291412	SON	6651	4.56813	5.19397	8.3366	7.22242	0.55205	0.000983	0.0152259	Up-regulated
NM_001128914	PCBP2	5094	4.65688	3.6461	6.83107	6.47301	0.5521	0.00099	0.0152841	Up-regulated
NM_182620	SKA2	348235	9.82475	9.96499	14.9187	14.7847	0.55719	4.26E-07	3.01E-05	Up-regulated
NM_152624	DCP2	167227	1.44737	1.89442	2.63798	2.70133	0.55935	0.000534	0.0096233	Up-regulated
NM_001786	CDK1	983	19.9781	21.5982	31.0477	31.299	0.56007	1.80E-07	1.49E-05	Up-regulated
NM_018369	DEPDC1B	55789	4.0817	4.85556	7.83902	6.81324	0.56286	0.001212	0.0177464	Up-regulated
NM_005053	RAD23A	5886	27.4679	26.3638	37.1697	44.6033	0.56499	3.26E-06	0.0001732	Up-regulated
NM_006406	PRDX4	10549	35.6042	37.0908	52.0857	57.8543	0.56515	6.54E-06	0.0002954	Up-regulated
NM_152455	ZSCAN29	146050	1.51905	1.50525	2.75812	2.28438	0.56705	0.001612	0.0217677	Up-regulated
NM_005496	SMC4	10051	3.023	3.09445	4.58826	4.93045	0.56845	4.20E-05	0.0013395	Up-regulated
NM_153695	ZNF367	195828	6.30511	5.92705	8.84568	10.0078	0.56865	1.37E-05	0.0005512	Up-regulated
NM_001260489	LSR	51599	5.0508	3.81828	7.42795	7.38934	0.57041	0.001594	0.0215883	Up-regulated
NM_014109	ATAD2	29028	6.33064	7.4632	10.5315	10.6286	0.57105	2.64E-06	0.0001436	Up-regulated
NM_016195	KIF20B	9585	3.39183	3.253	4.98606	5.23006	0.57167	3.65E-06	0.0001881	Up-regulated

## TGFβ1 induces cisplatin resistance of NSCLC by G6PD

NM_001254	CDC6	990	9.2826	9.11711	15.1649	13.1468	0.57224	6.07E-06	0.0002788	Up-regulated
NM_001083314	CHMP1A	5119	3.759	3.32725	7.03821	5.30202	0.57243	0.002676	0.0310646	Up-regulated
NM_005397	PODXL	5420	17.6568	16.9897	24.5734	27.5853	0.57547	8.53E-11	1.73E-08	Up-regulated
NM_001098525	CKAP2	26586	4.81088	5.34273	6.9712	9.8602	0.57659	0.000899	0.0142913	Up-regulated
NM_024745	SHCBP1	79801	6.43639	7.58883	11.2164	10.7441	0.58017	2.64E-05	0.0009625	Up-regulated
NM_006479	RAD51AP1	10635	5.35517	4.7529	8.28041	8.22939	0.58762	0.000296	0.0060801	Up-regulated
NM_007346	OGFR	11054	25.0696	19.5477	33.3896	36.2819	0.5878	7.09E-06	0.0003114	Up-regulated
NM_001048201	UHRF1	29128	8.62757	9.44194	13.7924	13.9664	0.5881	7.57E-08	7.05E-06	Up-regulated
NM_002915	RFC3	5983	3.48771	3.94644	6.6354	5.94594	0.58931	0.000964	0.0150409	Up-regulated
NM_133474	ZNF721	170960	3.0936	2.99248	4.71734	4.9542	0.58941	3.94E-05	0.001287	Up-regulated
NM_001143842	TMEM106C	79022	21.2792	19.6818	44.3939	26.4594	0.58958	0.001506	0.0206685	Up-regulated
NM_006499	LGALS8	3964	1.59563	1.16594	2.17528	2.78061	0.59262	0.002107	0.026199	Up-regulated
NM_017512	ENOSF1	55556	6.11652	6.78033	9.99799	9.96817	0.59467	9.72E-08	8.82E-06	Up-regulated
NM_002543	OLR1	4973	13.8195	13.5094	20.8288	21.1521	0.595	8.73E-09	1.02E-06	Up-regulated
NM_030648	SETD7	80854	2.22745	2.39466	3.66858	3.66163	0.59654	1.00E-05	0.000424	Up-regulated
NM_138555	KIF23	9493	4.69182	5.7142	8.35285	8.34962	0.59656	4.87E-05	0.0015033	Up-regulated
NM_001284301	ANLN	54443	14.9571	15.2568	24.278	22.0355	0.59753	1.46E-10	2.73E-08	Up-regulated
NM_032440	LCOR	84458	1.02725	0.602338	1.59307	1.5109	0.60053	0.002724	0.0313537	Up-regulated
NM_152437	ZNF664	144348	14.7735	16.6274	23.8244	24.7096	0.60218	2.03E-09	2.68E-07	Up-regulated
NM_006599	NFAT5	10725	3.44775	2.4534	4.25575	5.67242	0.60343	0.000387	0.007467	Up-regulated
NM_012310	KIF4A	24137	5.62815	6.42165	9.3235	9.70336	0.6041	1.38E-06	8.25E-05	Up-regulated
NM_001271953	TPGS2	25941	5.0401	7.46638	10.1054	16.2769	0.60419	0.003549	0.0376911	Up-regulated
NM_001168	BIRC5	332	18.5071	19.5325	28.5279	30.2431	0.60549	7.97E-10	1.25E-07	Up-regulated
NM_014708	KNTC1	9735	2.45447	2.54416	3.88717	4.0736	0.60679	4.76E-06	0.0002365	Up-regulated
NM_001177639	DAG1	1605	1.01217	1.59816	2.15101	3.57407	0.6091	0.00338	0.0364205	Up-regulated
NM_018132	CENPQ	55166	4.66256	4.75978	8.762	7.69501	0.60985	0.000819	0.0132689	Up-regulated
NM_001126337	TUFT1	7286	11.6225	12.2193	17.2044	20.6562	0.61089	1.84E-06	0.0001035	Up-regulated
NM_003298	NR2C2	7182	1.732	1.918	3.3314	2.72467	0.6129	0.00011	0.0028144	Up-regulated
NM_012381	ORC3	23595	3.39999	3.60147	6.36277	5.67162	0.61703	0.000409	0.0077768	Up-regulated
NM_015250	BICD2	23299	4.66353	5.31983	8.1238	7.98063	0.62652	1.28E-06	7.79E-05	Up-regulated
NM_152562	CDCA2	157313	1.98468	2.64932	4.64831	3.87981	0.62938	0.00091	0.0144341	Up-regulated
NM_001142556	HMMR	3161	3.4112	3.22255	6.35024	5.17354	0.62988	0.000276	0.005786	Up-regulated
NM_001278462	MDM2	4193	0.800655	1.16751	1.58505	3.27856	0.63053	0.002468	0.0293324	Up-regulated
NM_024629	CENPU	79682	4.5648	4.44247	7.62149	7.54319	0.63881	4.24E-05	0.0013424	Up-regulated
NM_145810	CDCA7	83879	5.12444	5.92859	9.61584	9.01455	0.63937	3.61E-05	0.0011998	Up-regulated
NM_001135244	TCOF1	6949	2.26383	2.7162	5.28376	3.81856	0.64841	0.000428	0.0080256	Up-regulated
NM_005578	LPP	4026	1.93832	1.63966	3.41943	2.62991	0.65113	1.67E-05	0.0006476	Up-regulated
NM_001079812	DIAPH1	1729	2.01117	2.28867	3.74117	3.58954	0.65211	2.77E-05	0.0009975	Up-regulated
NM_170697	ALDH1A2	8854	16.8447	23.0438	43.9944	28.5157	0.65522	0.000298	0.0060947	Up-regulated
NM_001003722	GLE1	2733	9.10633	8.93634	14.7427	14.3724	0.65584	8.93E-10	1.34E-07	Up-regulated
NR_136611	PARP6	56965	4.09052	3.18688	7.22123	6.06873	0.65634	0.000315	0.0063921	Up-regulated
NM_004612	TGFBR1	7046	1.88076	2.5402	3.84572	3.98591	0.66388	8.94E-05	0.0023887	Up-regulated
NM_001024807	APLP1	333	2.55502	3.44981	5.26298	6.75763	0.66925	0.000708	0.0119724	Up-regulated
NM_020127	TUFT1	7286	8.57366	9.55385	16.294	14.114	0.67458	3.79E-07	2.79E-05	Up-regulated
NM_001948	DUT	1854	10.2168	11.6809	19.3211	17.8514	0.68015	1.39E-06	8.25E-05	Up-regulated
NM_001143841	TMEM106C	79022	15.2661	17.7492	45.2532	23.2724	0.68024	0.000702	0.0119111	Up-regulated
NM_206855	QKI	9444	0.360379	0.444739	0.873975	0.714677	0.68228	0.000392	0.0075062	Up-regulated
NR_027873	PAXBP1	94104	2.59895	2.53303	4.25067	5.01276	0.69588	3.04E-05	0.0010753	Up-regulated
NM_177424	STX12	23673	5.71898	6.57272	10.9242	10.2792	0.69758	6.06E-07	4.11E-05	Up-regulated
NM_182946	NIN	51199	1.018	1.20359	2.21254	2.04154	0.7023	0.000116	0.0029412	Up-regulated
NM_001202502	NIPSNAP1	8508	6.06731	7.61934	11.5464	14.5009	0.71961	5.04E-05	0.0015453	Up-regulated
NM_001319999	RACGAP1	29127	11.0092	9.84637	17.7858	17.7099	0.72652	2.41E-11	5.40E-09	Up-regulated
NM_002482	NASP	4678	12.5394	13.401	21.3426	23.1612	0.73926	2.11E-12	5.66E-10	Up-regulated
NM_001127380	SAA2	6289	14.5799	15.6263	25.3103	26.9924	0.7429	1.12E-10	2.20E-08	Up-regulated
NM_001099650	GXYLT1	283464	4.64917	5.67234	10.1285	8.466	0.74512	1.68E-07	1.40E-05	Up-regulated
NM_181471	RFC2	5982	7.59054	8.26763	14.9757	13.9094	0.74605	8.86E-07	5.73E-05	Up-regulated
NM_004724	ZW10	9183	3.64776	4.21873	7.24923	7.39685	0.75057	2.47E-06	0.0001364	Up-regulated

## TGFβ1 induces cisplatin resistance of NSCLC by G6PD

NM_080911	UNG	7374	5.20047	6.70238	10.9088	12.1601	0.7574	1.24E-05	0.0005069	Up-regulated
NM_014282	HABP4	22927	7.22039	6.60979	13.3693	11.7755	0.76666	3.45E-08	3.56E-06	Up-regulated
NM_001330700	TOP2B	7155	3.05627	2.58699	4.70967	6.20103	0.76893	4.83E-06	0.0002369	Up-regulated
NM_001284388	NOLC1	9221	1.77959	1.9532	5.47742	3.3285	0.77117	0.000138	0.0033741	Up-regulated
NM_001282873	UBR5	51366	1.04427	1.49908	2.25964	3.18154	0.77447	4.95E-05	0.0015224	Up-regulated
NM_002466	MYBL2	4605	12.0199	12.2255	21.431	21.2952	0.78124	1.66E-14	5.88E-12	Up-regulated
NR_034009	SRSF6	6431	2.76951	2.30268	4.93355	5.12781	0.81054	7.72E-07	5.11E-05	Up-regulated
NM_203504	G3BP2	9908	14.5459	15.4901	27.0479	26.5294	0.81073	1.20E-20	6.30E-18	Up-regulated
NM_004741	NOLC1	9221	4.35879	4.06316	7.17679	12.1563	0.84545	1.00E-05	0.000424	Up-regulated
NM_001320570	ADAM10	102	0.975843	1.26181	3.75021	2.372	0.84847	3.62E-05	0.0012014	Up-regulated
NM_014829	DDX46	9879	0.98689	1.42565	3.94855	2.60339	0.87653	1.64E-05	0.0006379	Up-regulated
NM_001034	RRM2	6241	3.79539	5.4564	10.3266	9.87954	0.88529	3.53E-07	2.62E-05	Up-regulated
NM_001272053	MRFAP1	93621	4.85644	6.814	12.2615	14.4572	0.89755	7.98E-07	5.25E-05	Up-regulated
NM_001284389	NOLC1	9221	7.45924	10.3423	20.6681	18.5189	0.95587	9.65E-10	1.43E-07	Up-regulated
NM_198334	GANAB	23193	51.8807	52.5783	101.576	101.819	0.95965	3.23E-70	1.78E-66	Up-regulated
NM_022111	CLSPN	63967	0.816136	1.04094	2.06914	2.45689	0.96259	1.15E-07	1.02E-05	Up-regulated
NM_001287135	CDK14	5218	3.99112	4.60451	8.98004	9.21082	0.98221	8.02E-15	3.04E-12	Up-regulated
NM_003290	TPM4	7171	70.618	77.9118	146.57	154.443	0.99553	2.30E-35	3.15E-32	Up-regulated
NM_001142269	GGCX	2677	1.2031	0.959631	2.87471	3.08918	1.17446	2.38E-12	6.21E-10	Up-regulated
NM_015154	MESDC2	23184	5.41018	6.06701	15.1009	14.6192	1.27029	4.72E-28	5.19E-25	Up-regulated
NM_001328615	HSD3B1	3283	6.60148	7.52487	21.324	22.582	1.41155	1.37E-21	7.93E-19	Up-regulated
NM_001293696	SEPT9	10801	0	0.016527	12.6545	9.95299	3.85441	2.73E-84	3.00E-80	Up-regulated