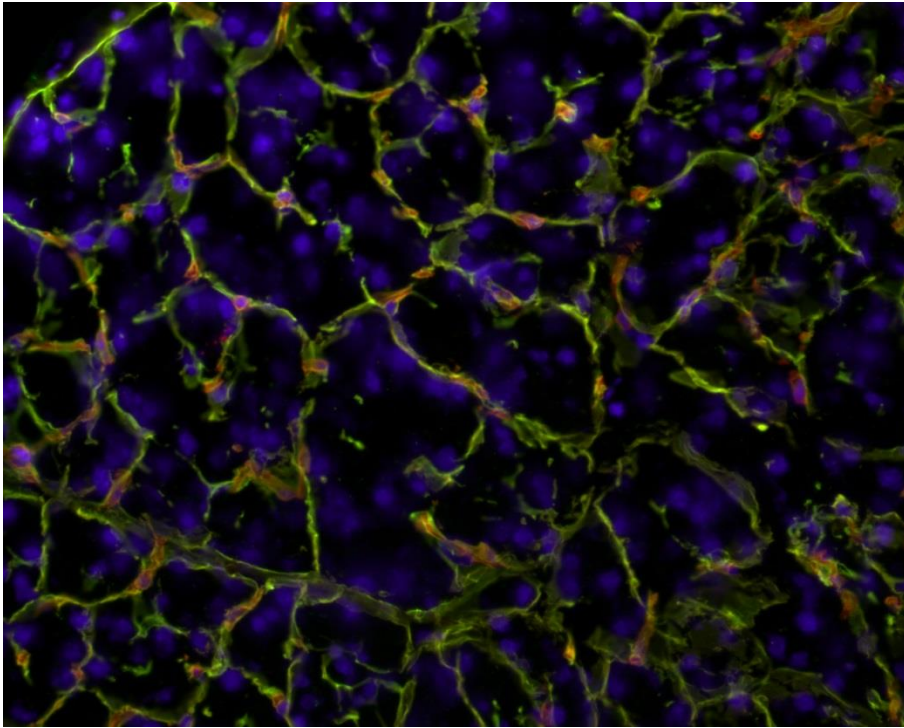


Figure 2 B: Co-staining analysis

C3H Pancreas: collagen IV/Nidogen I/DAPI



C3H Pancreas: Laminin/Nidogen I/DAPI

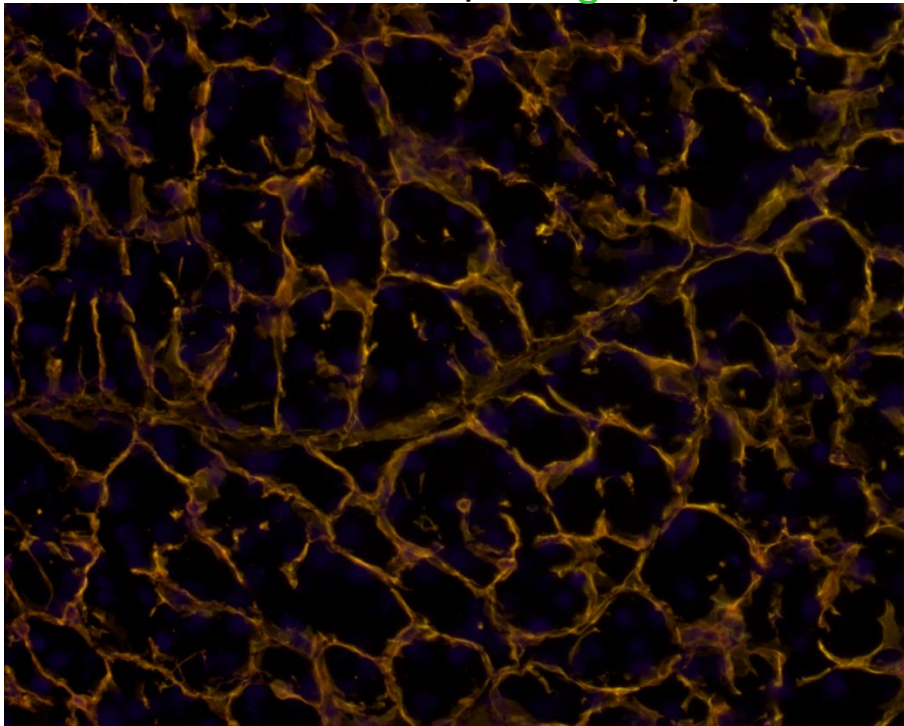
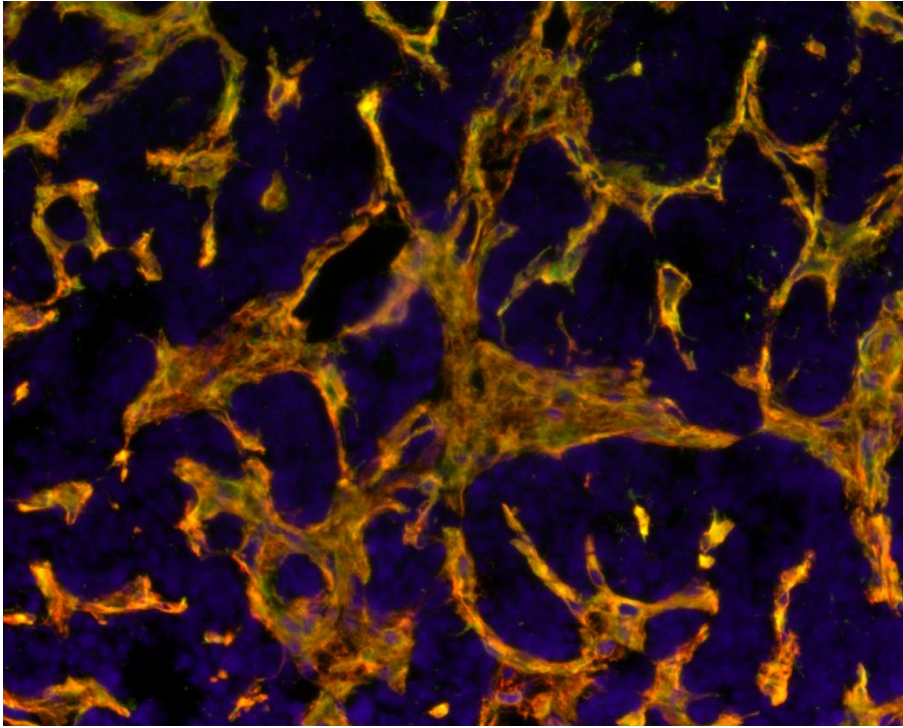


Figure 2 B: Co-staining analysis

RIP1-Tag5 tumour: collagen IV/Nidogen I/DAPI



RIP1-Tag5 tumour: Laminin/Nidogen I/DAPI

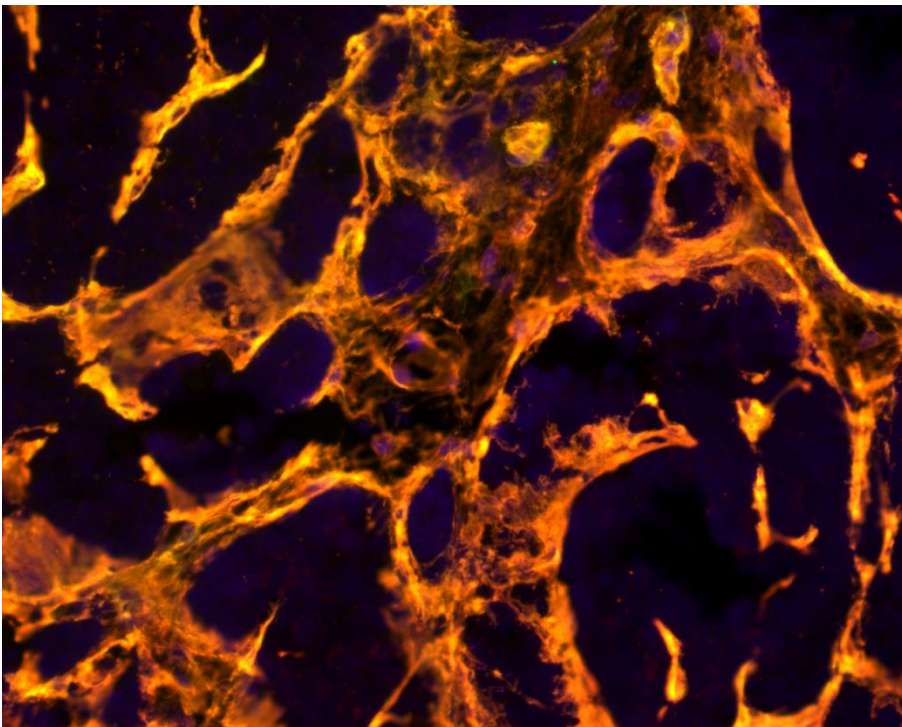
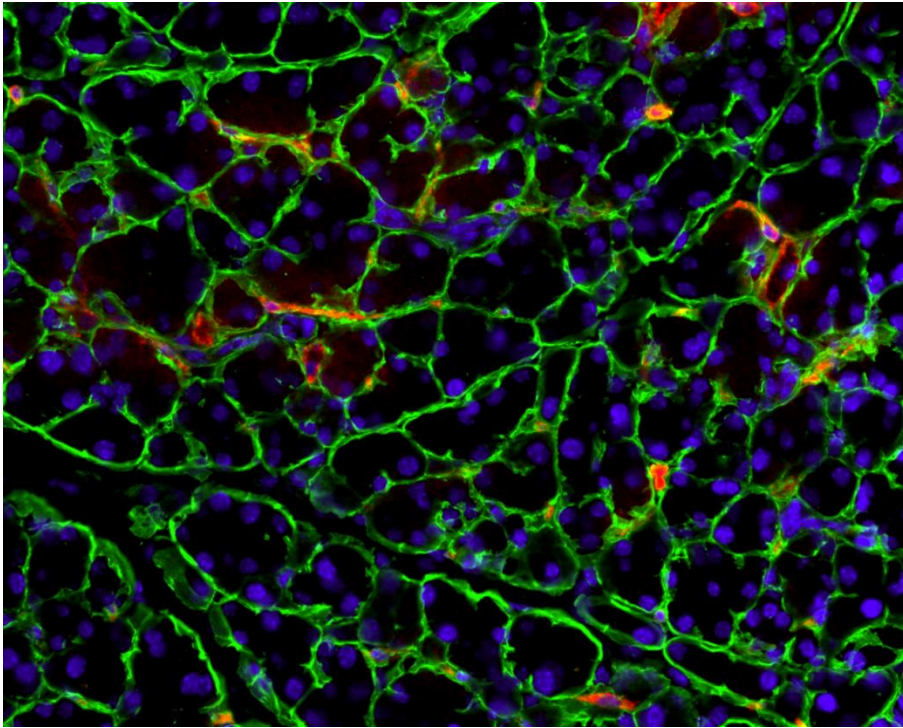


Figure 2 C: Co-staining analysis

C3H Panreas: **CD31**/**Laminin**/**DAPI**



RIP1-Tag5 tumour: **CD31**/**Laminin**/**DAPI**

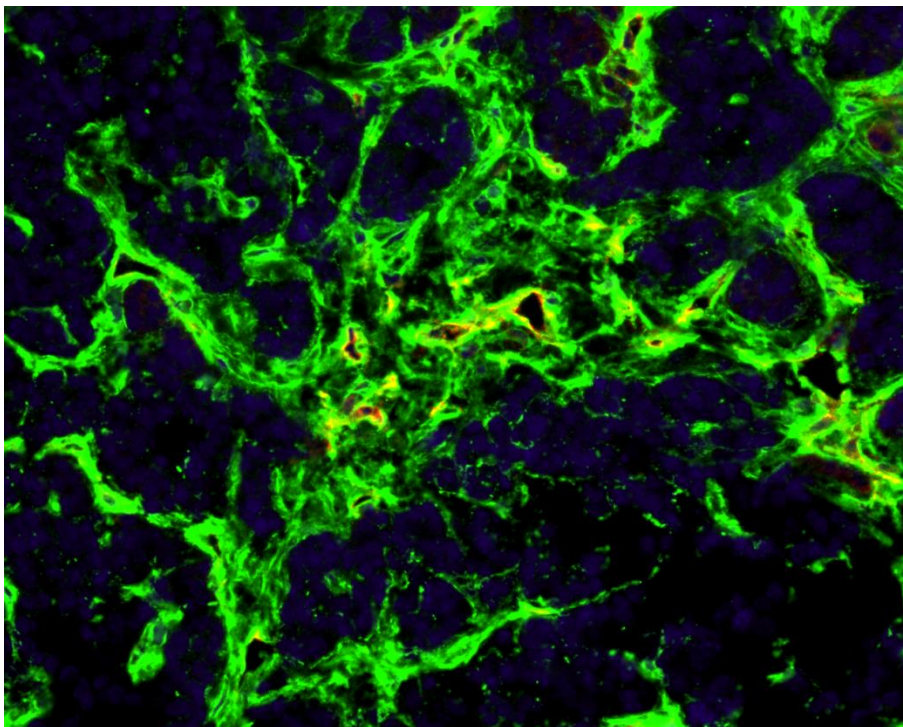
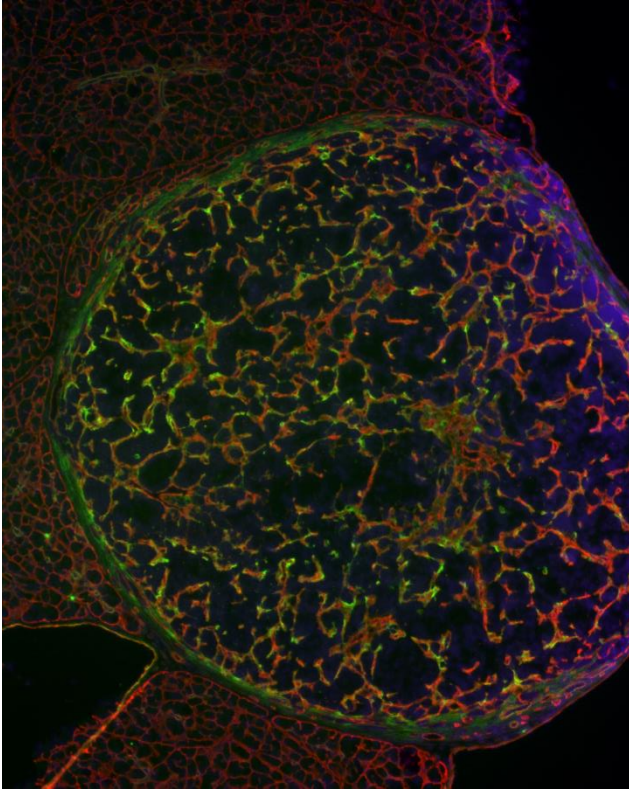


Figure 2 D: Co-staining analysis

RIP1-Tag5 tumour: FAM-CSG/Laminin/DAPI



RIP1-Tag5 tumour: Laminin/CD31/DAPI

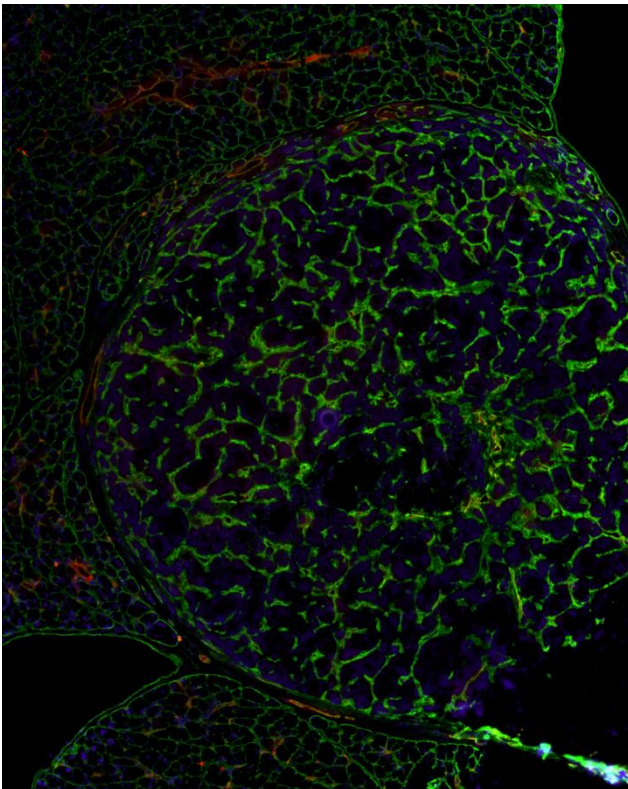
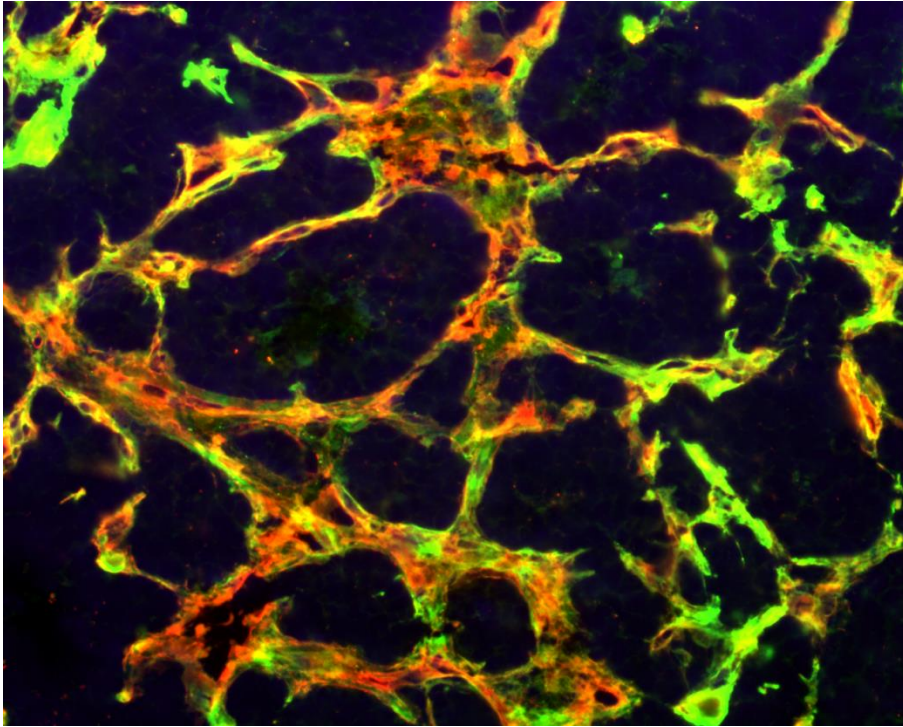


Figure 2 E: Co-staining analysis

RIP1-Tag5 tumour: FAM-CSG/Laminin



RIP1-Tag5 tumour: FAM-CSG/Nidogen-1

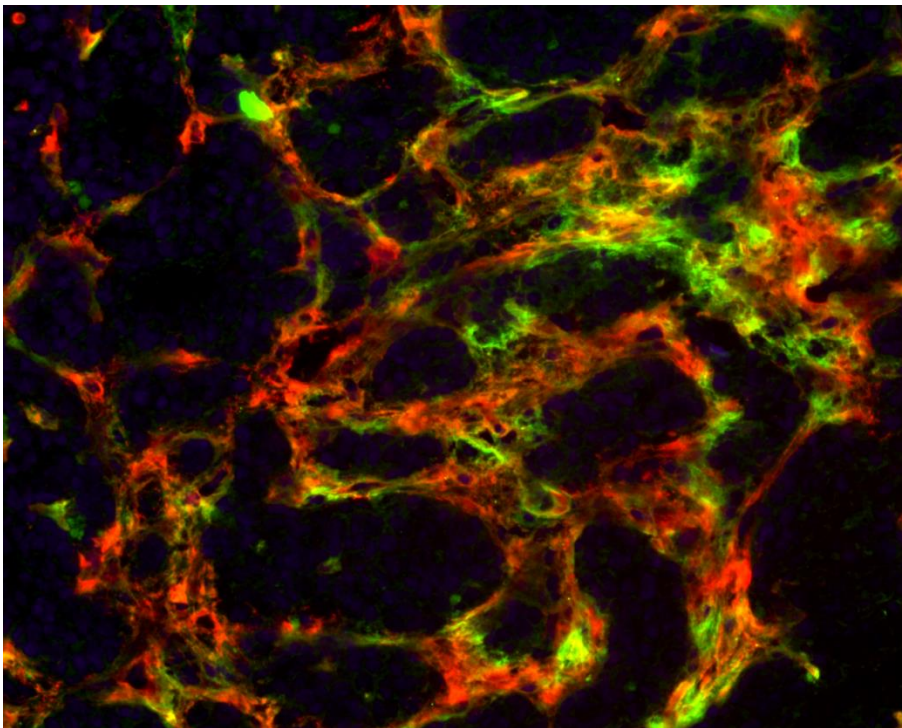
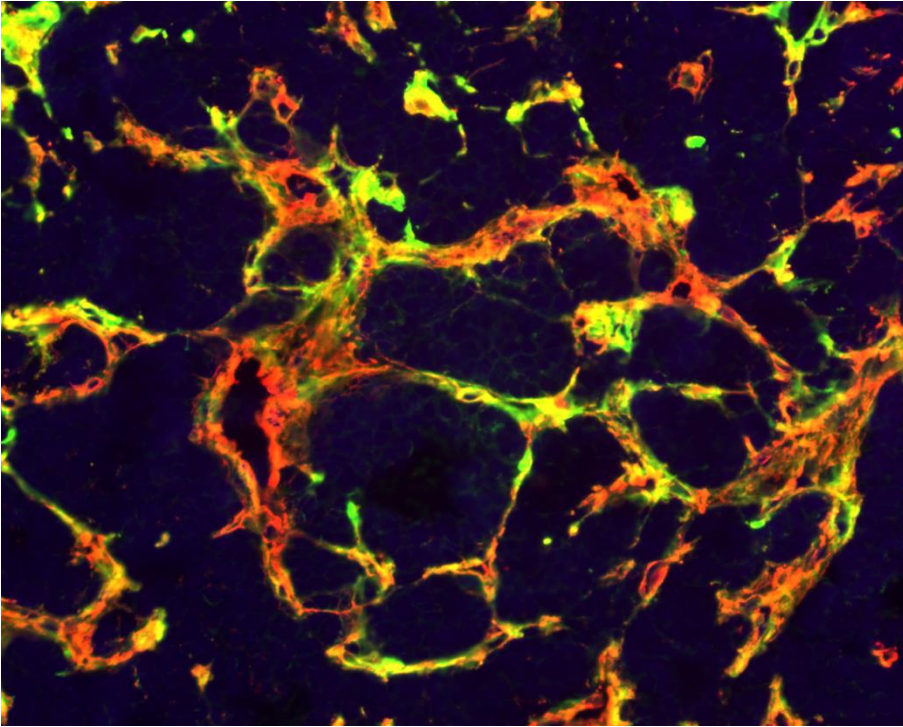


Figure 2 E: Co-staining analysis

RIP1-Tag5 tumour: FAM-CSG/Col-IV



RIP1-Tag5 tumour: FAM-CSG/CD31/DAPI

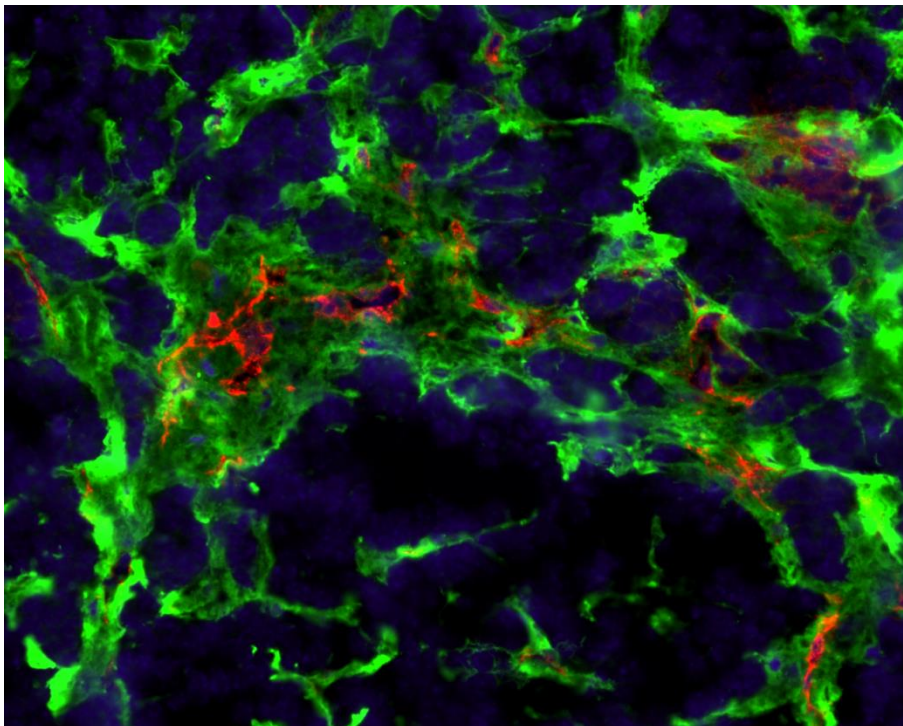
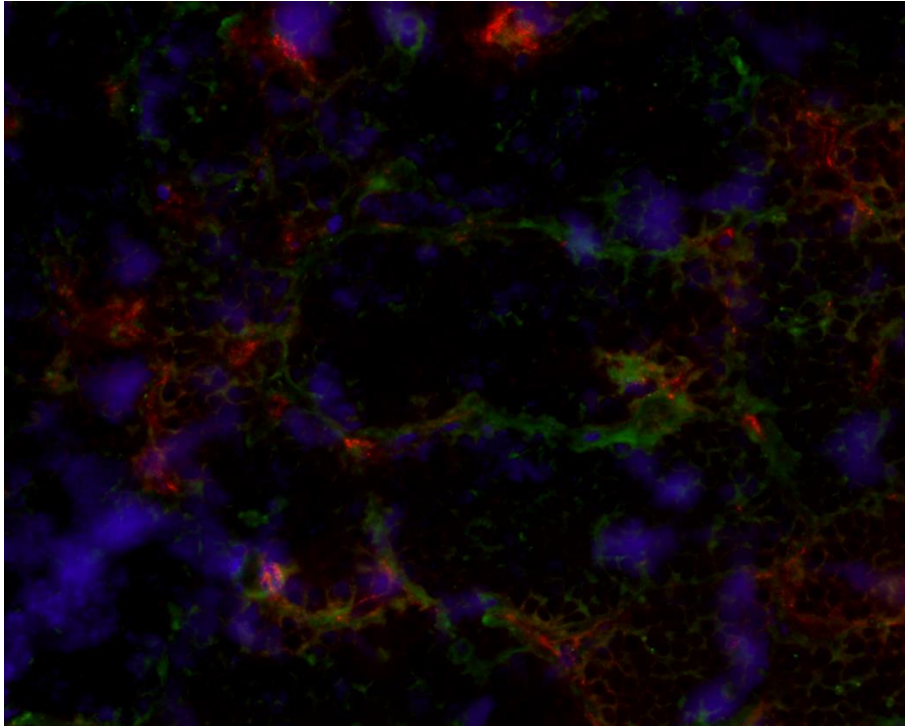


Figure 2 E: Co-staining analysis

RIP1-Tag5 tumour: FAM-CREKA/CD31/DAPI



RIP1-Tag5 tumour: FAM-CREKA/Laminin/DAPI

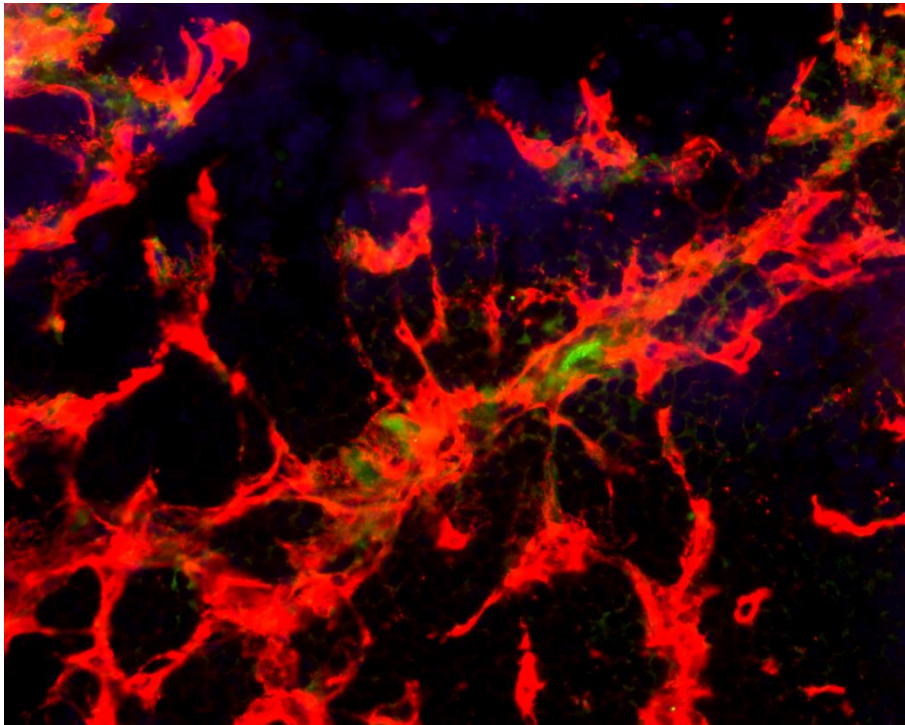


Figure 2B % staining/field

FAM-CSG on Human Normal Breast	Pancreas	Pancreas	Pancreas	Tumour	Tumour	Tumour
Laminin	18.6	12.6	10	25.4	27.9	40.3
Nidogen 1	11.4	14.8	10.4	27.3	27.9	35.1
Collagen IV	9.74	10.46	9.78	30.7	39.8	38.4

Multiple t-tests	Significant?	P value	Mean1	Mean2	Difference	of differer	t ratio	df
Laminin	Yes	0.029426579	13.73	31.2	-17.47	5.264	3.318	4
Nidogen 1	Yes	0.003230055	12.2	30.1	-17.9	2.838	6.308	4
Collagen IV	Yes	0.000753965	9.993	36.3	-26.31	2.839	9.267	4

Figure 2C: Ratio Laminin: CD31

Pancreas	Tumour
7.54	20.36
6.86	8.66
7.86	14.95
2.02	12.42
5.53	17.55

Unpaired t-test

Table Analyzed	Ratio Laminin CD31
Column B	RT5 T
vs.	vs.
Column A	Pancreas
Unpaired t test	
P value	0.0048
P value summary	**
Significantly different (P < 0.05)?	Yes
One- or two-tailed P value?	Two-tailed
t, df	t=3.861 df=8

Figure 2E: % of colocalisation between 2 markers

CSG Lam	CSG NID1	CSG COLIV	CSG CD31	CREKA Lam	CREKA CD31
98.7	78.8	86	25.7	4.87	10.74
81.9	92.7	79.8	22.8	3.32	5.44
85.5	93.3	61.7	21.3	10.7	24.1
91.4	86.1	77.4	27.3	5.6	8.86

One-way ANOVA Multiple comparison

Number of families	1
Number of comparisons per family	6
Alpha	0.05

Tukey's multiple comparisons test	Mean Diff.	95.00% CI of diff.	Significant?	Summary	Adjusted P Value
CSG Lam vs. CSG CD31+	65.1	52.75 to 77.45	Yes	****	<0.0001 A-D
CSG Lam vs. CREKA Lam	83.25	70.9 to 95.6	Yes	****	<0.0001 A-E
CSG Lam vs. CREKA CD31	77.09	64.74 to 89.44	Yes	****	<0.0001 A-F
CSG CD31 vs. CREKA Lam	18.15	5.801 to 30.5	Yes	**	0.0044 D-E
CSG CD31 vs. CREKA CD31	11.99	-0.3612 to 24.34	No	ns	0.0581 D-F
CREKA Lam vs. CREKA CD31	-6.163	-18.51 to 6.189	No	ns	0.4773 E-F