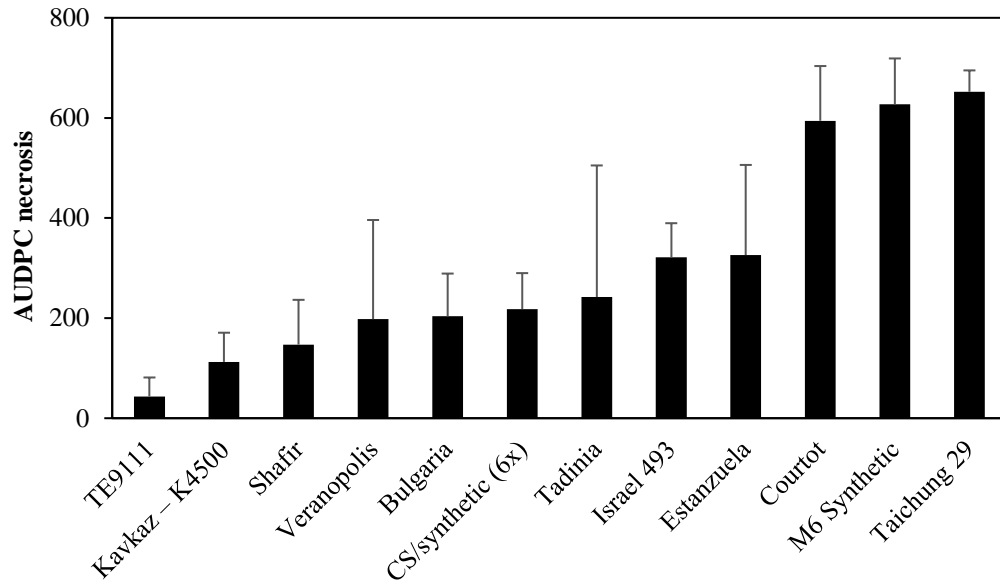


**Supplementary Figure 1.** Response of the differential wheat genotypes with known Stb genes to Swedish isolate of *Zymoseptoria tritici*. The differential set was described previously (Ghaffary et al., 2018)



Ghaffary, S.M.T., Chawade, A., and Singh, P.K. (2018). Practical breeding strategies to improve resistance to Septoria tritici blotch of wheat. *Euphytica* 214(7). doi: 10.1007/s10681-018-2205-4.

**Supplementary Figure 2.** Single nucleotide polymorphism (SNP) significantly associated with STB resistance in winter wheat identified by genome-wide association study (GWAS) with four different models. (A) MLM; (B) FarmCPU; (C) MLMM; (D) Super.

