

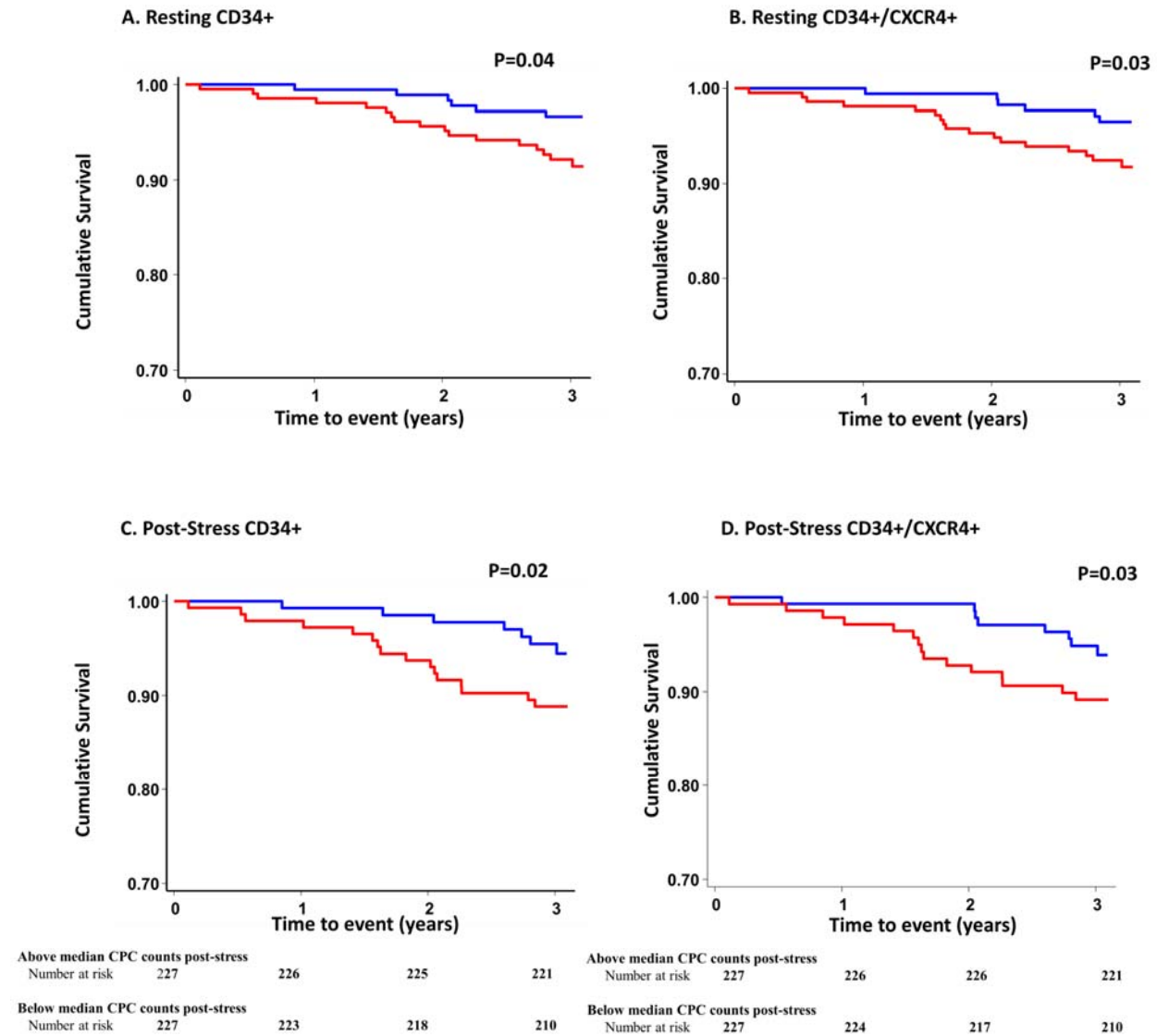
Supplementary Online Content

Moazzami K, Lima BB, Hammadah M, et al. Association between change in circulating progenitor cells during exercise stress and risk of adverse cardiovascular events in patients with coronary artery disease. *JAMA Cardiol*. Published December 4, 2019.
doi:10.1001/jamacardio.2019.4528

eFigure. Kaplan–Meier Curves for Association Between Resting CPC Counts (A and B), Poststress CPC Subsets (C and D), and Incident Cardiovascular Death and Nonfatal Myocardial Infarction

This supplementary material has been provided by the authors to give readers additional information about their work.

eFigure. Kaplan–Meier Curves for Association Between Resting CPC Counts (A and B), Poststress CPC Subsets (C and D), and Incident Cardiovascular Death and Nonfatal Myocardial Infarction



Blue lines represent subjects with CPC counts above median value. Red lines represent those with CPC counts below median value.