

Supplementary Online Content

Andes LJ, Cheng YJ, Rolka DB, Gregg EW, Imperatore G. Prevalence of prediabetes among adolescents and young adults in the United States, 2005-2016. *JAMA Pediatr*. Published online December 2, 2019. doi:10.1001/jamapediatrics.2019.4498

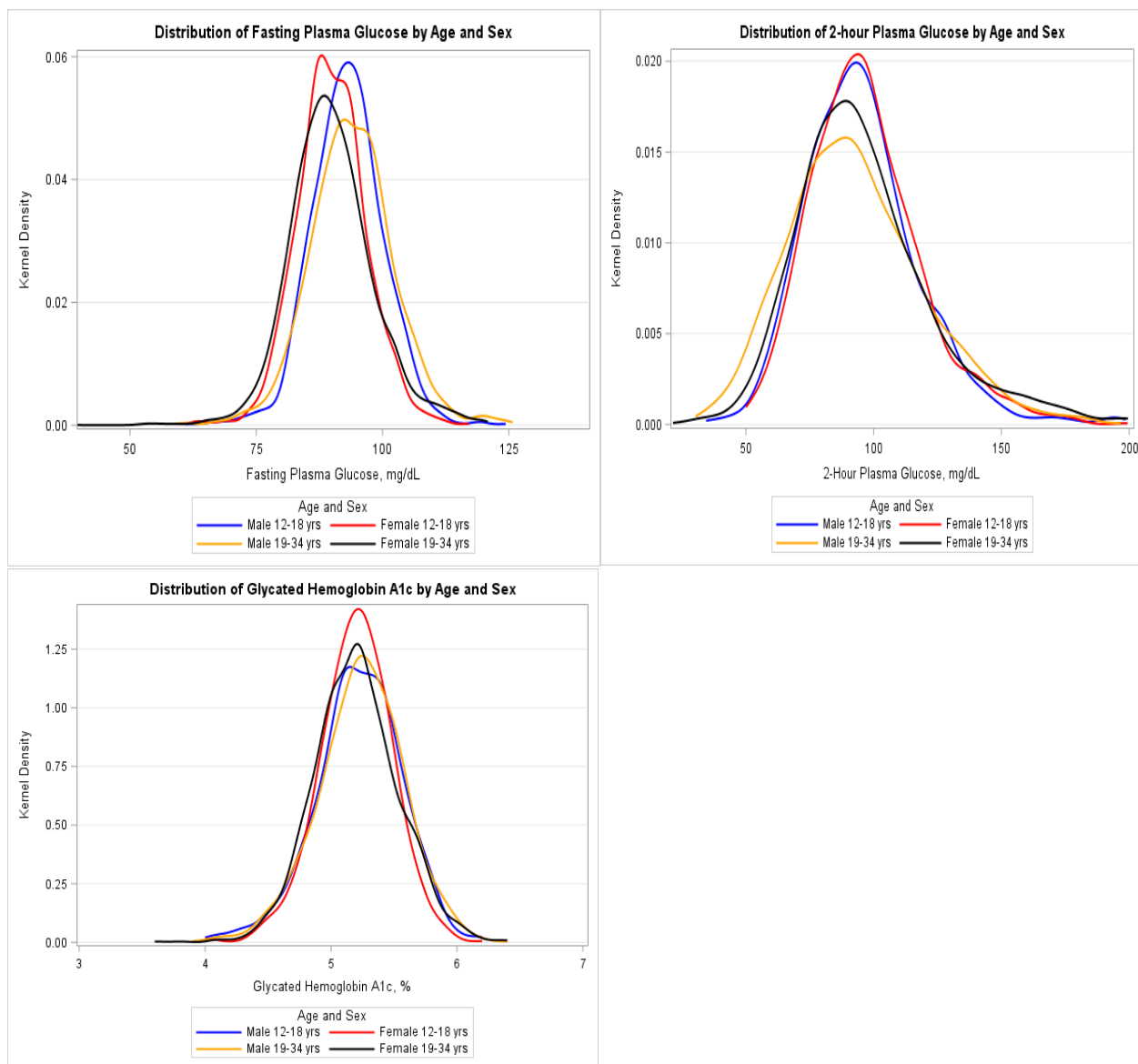
eFigure. Kernel Density Distributions of Fasting Plasma Glucose, 2-hour Plasma Glucose, and Glycated Hemoglobin A1c

eTable 1. Median Fasting Plasma Glucose, 2-hour Plasma Glucose and Glycated Hemoglobin (A1c)

eTable 2. Distribution of Glucose Metabolism Abnormalities by Age Group and Race/Ethnicity

This supplementary material has been provided by the authors to give readers additional information about their work.

eFigure. Kernel Density Distributions of Fasting Plasma Glucose, 2-hour Plasma Glucose, and Glycated Hemoglobin A1c



eTable 1. Median Fasting Plasma Glucose, 2-hour Plasma Glucose and Glycated Hemoglobin (A1c)

	Median (95% Confidence Intervals)		
	Fasting Plasma Glucose	2-hour Plasma Glucose	Glycated Hemoglobin A1c
Age group 12-18 years			
Males	93.0 (92.4-93.6)	92.4 (90.7-94.3)	5.15 (5.11-5.19)
Females	89.1 (88.5-90.3)	92.9 (90.4-95.7)	5.15 (5.12-5.17)
Age group 19-34 years			
Males	93.3 (92.5-94.32)	89.6 (88.2-91.9)	5.17 (5.14-5.19)
Females	88.8 (88.3-89.5)	91.5 (90.3-93.5)	5.11 (5.08-5.13)

eTable 2. Distribution of Glucose Metabolism Abnormalities by Age Group and Race/Ethnicity

	Age 12-18 Years			Age 19-34 Years		
	White, Non-Hispanic	Black, Non-Hispanic	Hispanic	White, Non-Hispanic	Black, Non-Hispanic	Hispanic
Normal	84.5 (81.2-87.4)	77.1 (72.9-80.8)	76.7 (72.9-80.1)	78.7 (75.5-81.7)	71.8 (68.0-75.3)	70.1 (66.1-73.8)
IFG only	9.5 (7.5-11.9)	4.8 (3.2-7.1)	13.1 (10.5-16.1)	12.4 (9.9-15.4)	6.4 (4.4-9.2)	11.8 (9.8-14.2)
IGT only	3.4 (2.2-5.1)	0.8 (0.3-1.8)	2.2 (1.5-3.4)	3.3 (2.4-4.6)	1.6 (0.8-3.1)	3.9 (2.5-5.8)
Increased A1c only	1.7 (0.9-3.2)	13.0 (10.4-16.1)	3.2 (2.0-5.1)	2.3 (1.5-3.4)	14.9 (12.2-18.1)	5.6 (4.2-7.5)
IFG + IGT	0.8 (0.2-2.5)	0.5 (0.2-1.3)	0.9 (0.3-2.5)	0.8 (0.4-1.6)	0.7 (0.2-2.0)	3.1 (2.0-4.6)
IFG + increased A1c	0.1 (0.0-0.5)	2.4 (1.1-5.3)	2.6 (1.5-4.7)	1.6 (1.0-2.5)	2.8 (1.8-4.3)	3.6 (2.5-5.3)
IGT + increased A1c	0.1 (0.0-0.5)	1.2 (0.5-2.6)	0.5 (0.2-1.2)	0.2 (0.1-0.7)	0.7 (0.3-1.9)	0.6 (0.3-1.3)
IFG + IGT + increased A1c	0	0.3 (0.0-1.8)	0.8 (0.3-2.3)	0.6 (0.3-1.5)	1.1 (0.5-2.6)	1.3 (0.7-2.5)
All IFG	10.4 (8.0-13.3)	7.9 (5.6-11.2)	17.4 (14.4-20.8)	15.4 (12.7-18.6)	11.0 (8.5-14.2)	19.9 (16.8-23.4)
All IGT	4.2 (2.8-6.2)	2.6 (1.6-4.4)	4.4 (3.0-6.3)	5.0 (3.8-6.5)	4.1 (2.9-5.9)	8.8 (6.9-11.2)
All increased A1c	1.8 (1.0-3.3)	16.9 (13.3-21.1)	7.1 (5.0-10.1)	4.7 (3.5-6.4)	19.5 (16.5-22.9)	11.2 (9.2-13.6)
Any prediabetes	15.5 (12.6-18.8)	22.9 (19.2-27.1)	23.3 (19.9-27.1)	21.3 (18.3-24.5)	28.2 (24.7-32.0)	29.9 (26.2-33.9)