

Supplementary materials**" Changes of Second-hand smoke exposure levels and risk of type 2 diabetes in middle age: The Korean Genome and Epidemiology Study (KoGES)"**

Joeeun Jeon^{1,2}, Keum Ji Jung², **Heejin Kimm^{2‡}**, Sun Ha Jee²

¹Department of Public Health, Graduate School, Yonsei University, Seoul, Korea

²Department of Epidemiology and Health Promotion, Institute for Health Promotion,

Graduate School of Public Health, Yonsei University

‡ Heejin Kimm, PhD, MD (Corresponding Author):

Department of Epidemiology and Health Promotion, Graduate School of Public Health,

Yonsei University

50 Yonsei-ro, Seodaemun-gu, Seoul, 03722, Republic of Korea

Tel: 82-2-2228-1531; Fax: 82-2-365-5118; E-mail: heejink@yuhs.ac

Supplementary materials

Supplementary Table 1. Hazard ratios (95% CI) for risk of type 2 diabetes according to trajectories of Secondhand smoking exposure levels among women, N=1,798

	Unadjusted model [*]	Multivariable model ^a	Fully adjusted model ^b
	RR (95% CI)	RR (95% CI)	RR (95% CI)
Trajectories of Second-hand smoking exposure			
Low-stable	1.00	1.00	1.00
Moderate to low	0.75 (0.57-1.00)	0.65 (0.49-0.86)	0.91 (0.65-1.29)
Moderate	0.79 (0.49-1.26)	0.68 (0.42-1.10)	0.67 (0.38-1.18)
High to low	1.63 (1.13-2.37)	1.69 (1.16-2.47)	1.78 (1.12-2.83)
P for trend	0.0104	0.0072	0.0642

Abbreviation: RR, Risk ratio; CI, confidence interval

^aModel Adjusted for age, family history of type 2 diabetes, alcohol drinking status, physical exercise, and body mass index, systolic blood pressure, total cholesterol level, educational levels, and household income at baseline

^bModel Adjusted for Multivariable model + body mass index, systolic blood pressure, and total cholesterol level at endline

Supplementary materials

Supplementary Table 2. Hazard ratios (95% CI) for risk of impaired fasting glucose according to trajectories of Secondhand smoking exposure levels among women, N=1,798

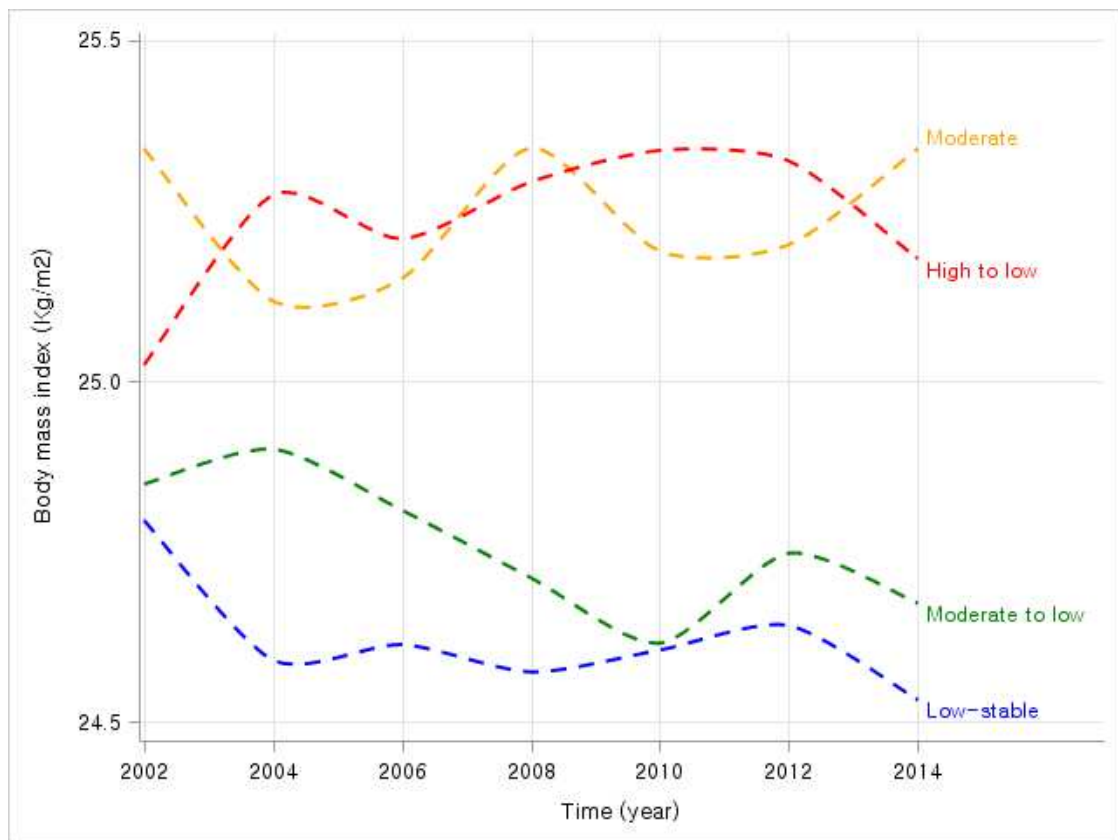
	Unadjusted model ^a	Multivariable model ^a	Fully adjusted model ^b
	RR (95% CI)	RR (95% CI)	RR (95% CI)
Trajectories of Second-hand smoking exposure			
Low-stable	1.00	1.00	1.00
Moderate to low	1.30 (1.08-1.56)	1.24 (1.04-1.49)	1.35 (1.10-1.66)
Moderate	2.08 (1.63-2.66)	1.92 (1.50-2.46)	1.39 (1.06-1.82)
High to low	1.31 (1.00-1.72)	1.36 (1.03-1.78)	1.54 (1.14-2.07)
P for trend	0.0003	0.0003	0.0083

Abbreviation: RR, Risk ratio; CI, confidence interval

^aModel Adjusted for age, family history of type 2 diabetes, alcohol drinking status, physical exercise, and body mass index, systolic blood pressure, total cholesterol level, educational levels, and household income at baseline

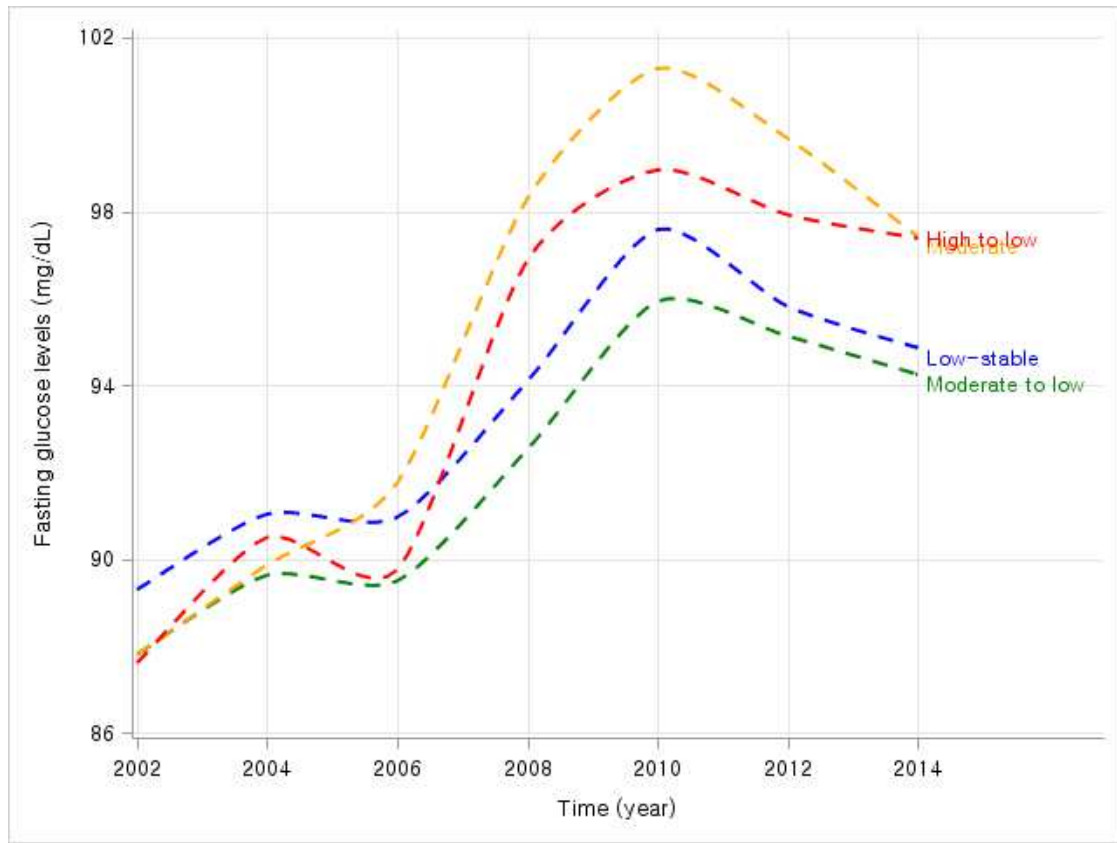
^bModel Adjusted for Multivariable model + body mass index, systolic blood pressure, and total cholesterol level at endline

Supplementary materials



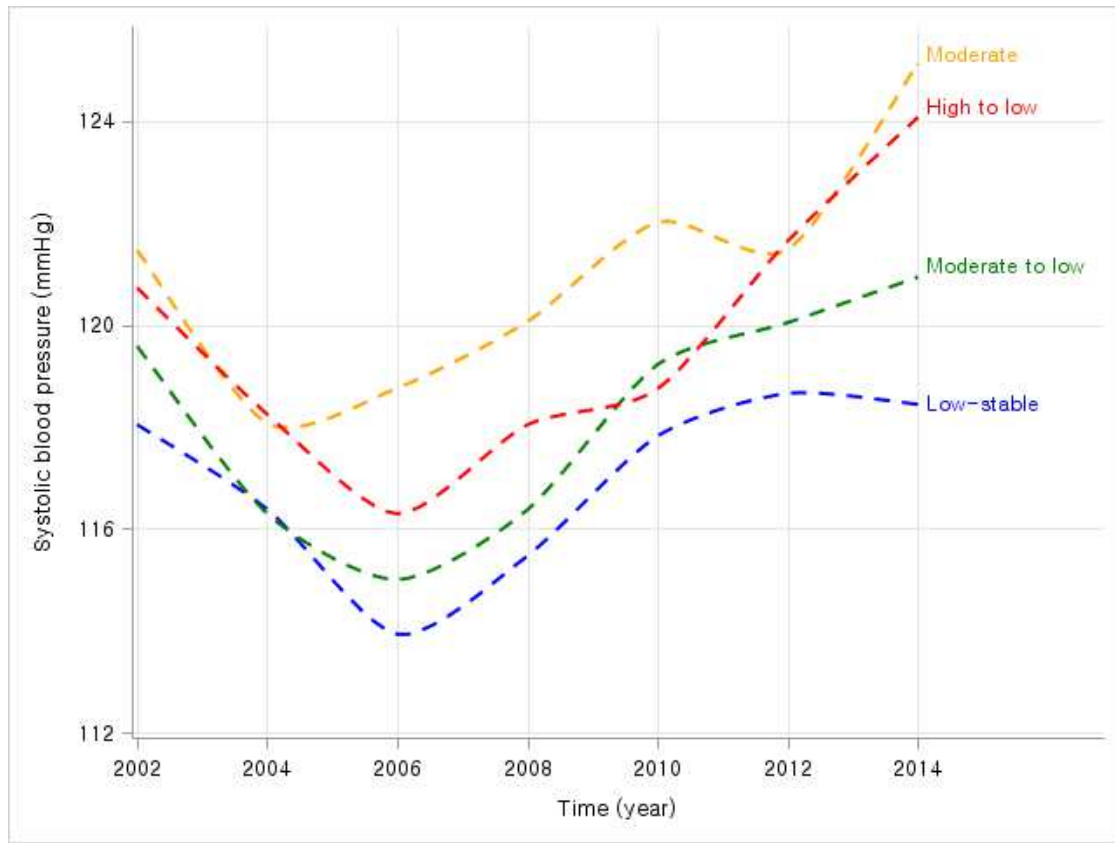
Supplementary Figure 1. Changes in body mass index during follow-up period by trajectory groups of secondhand smoking exposure levels

Supplementary materials



Supplementary Figure 2. Changes in fasting glucose level during follow-up period by trajectory groups of secondhand smoking exposure levels

Supplementary materials



Supplementary Figure 3. Changes in systolic blood pressure during follow-up period by trajectory groups of secondhand smoking exposure levels