

Additional File 5

Fig. S3 Species specific comparisons of GC_{TE} between Class I and Class II in following species:

Takifugu flavidus

Takifugu rubripes

Danio rerio

Lepisosteus oculatus

Thunnus orientalis

Xiphophorus maculatus

Cynoglossus semilaevis

Anguilla anguilla

Ctenopharyngodon idellus

Astyanax mexicanus

Gadus morhua

Gasterosteus aculeatus

Oreochromis niloticus

Oryzias latipes

Scleropages formosus

Poecilia formosa

Branchiostoma belcheri

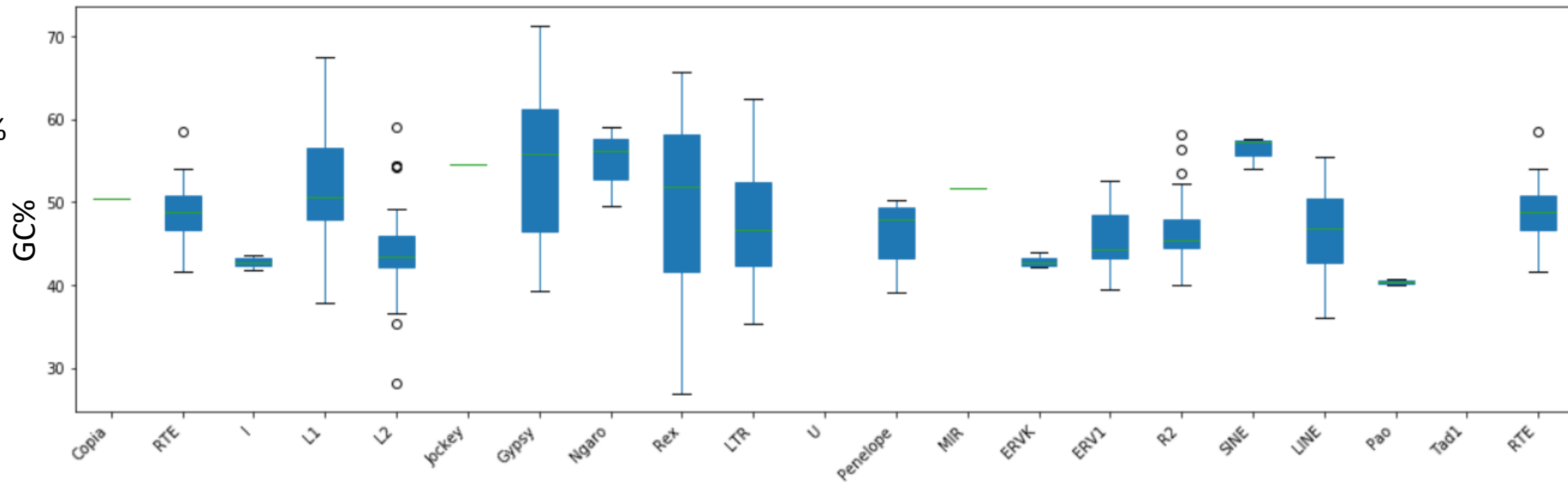
Petromyzon marinus

Callorhinchus mili

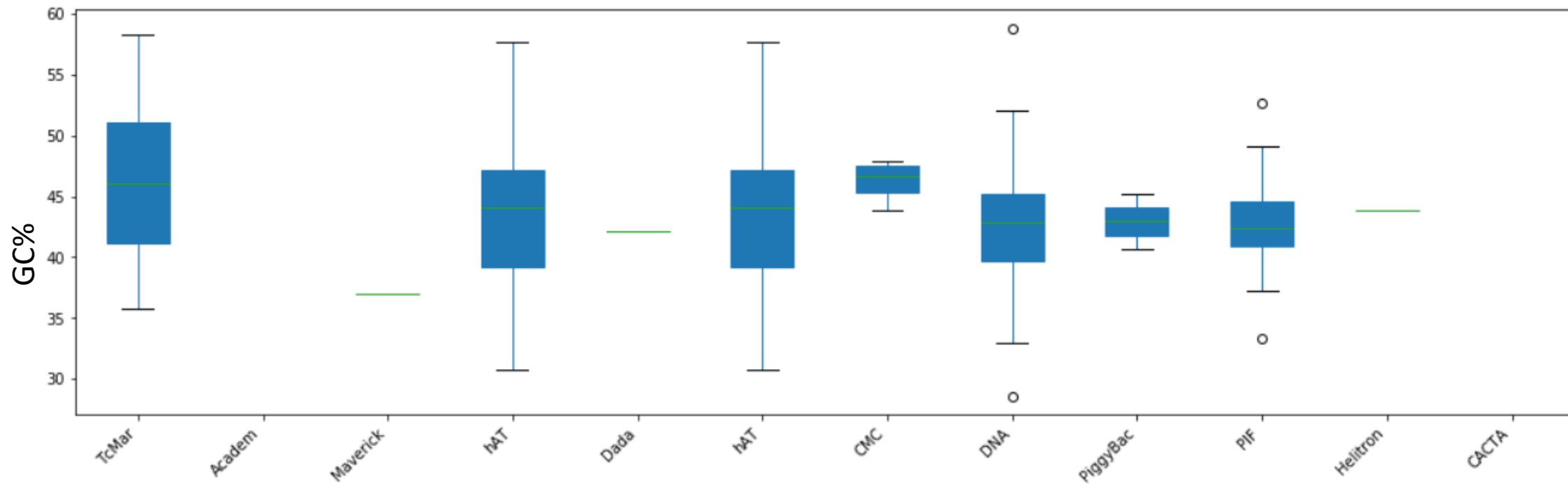
*Takifugu
flavidus*

$GC_G = 45,6\%$

Class I



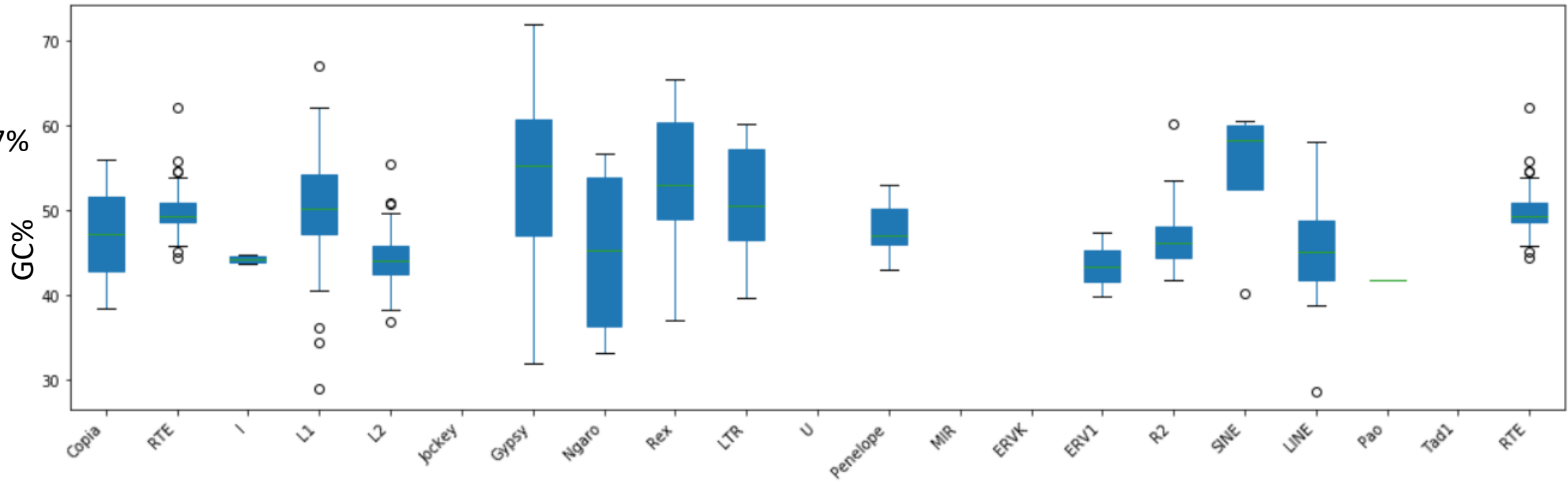
Class II



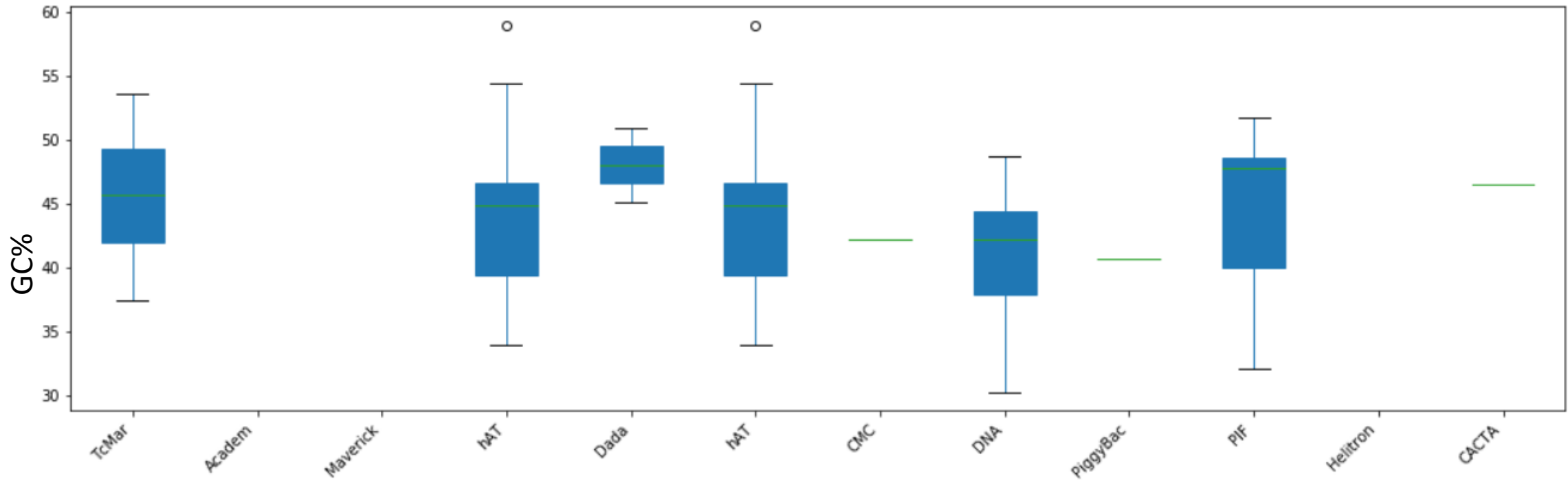
*Takifugu
rubripes*

$GC_G = 45,7\%$

Class I



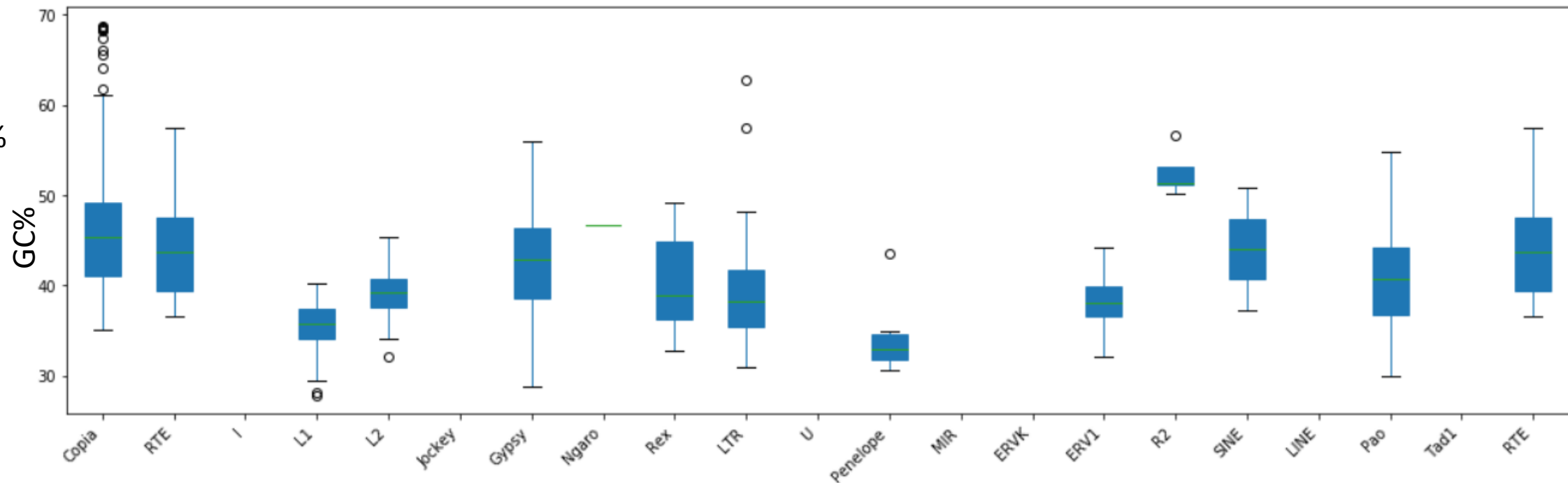
Class II



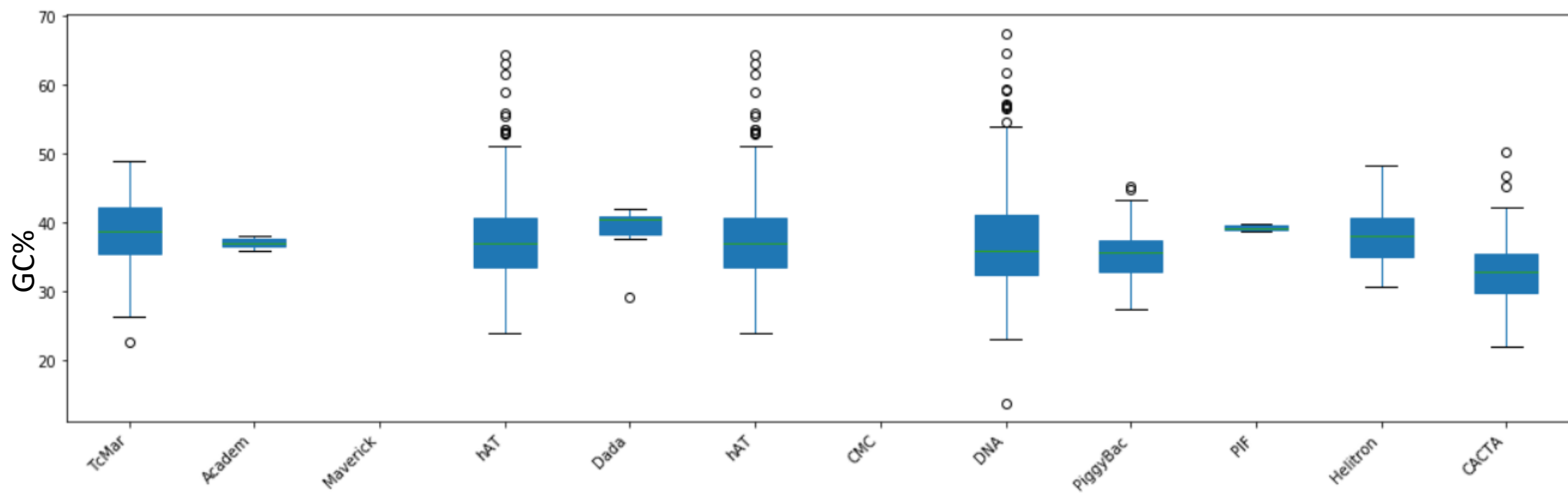
Danio rerio

$GC_G = 36,7\%$

Class I



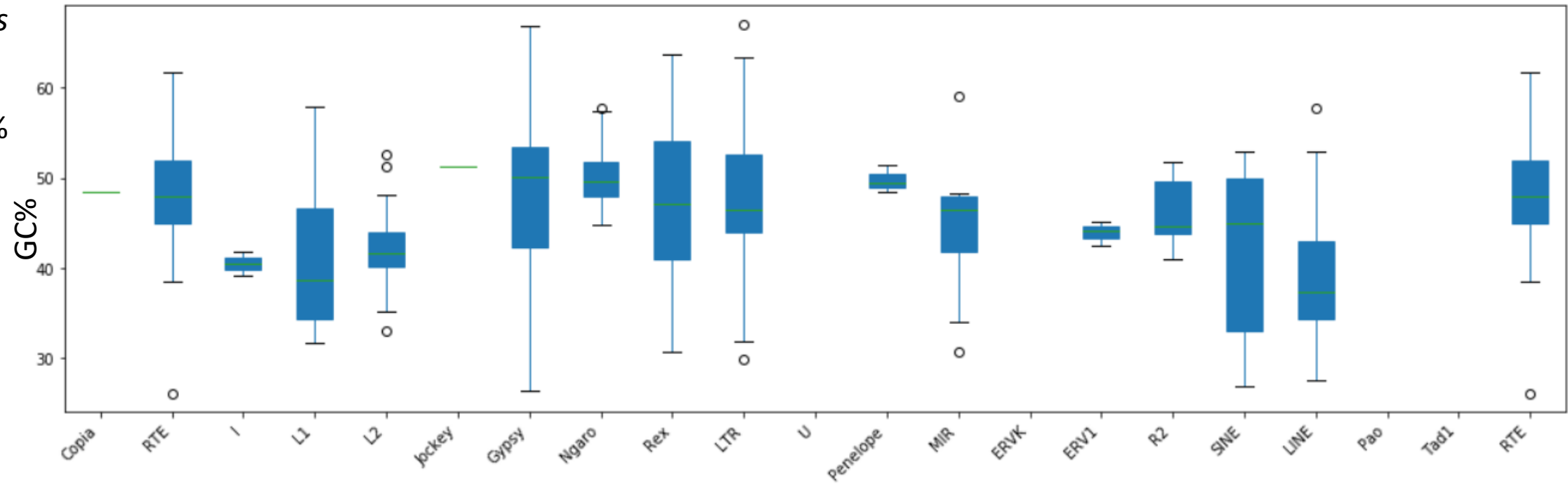
Class II



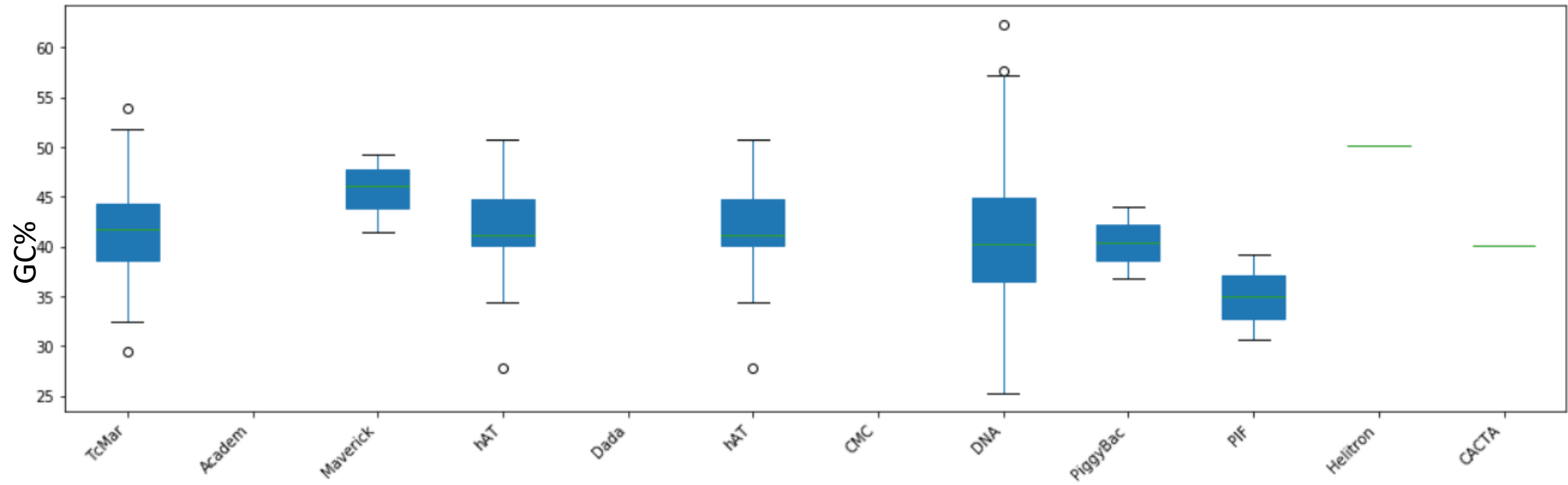
*Lepisosteus
oculatus*

GC_G = 40,4%

Class I



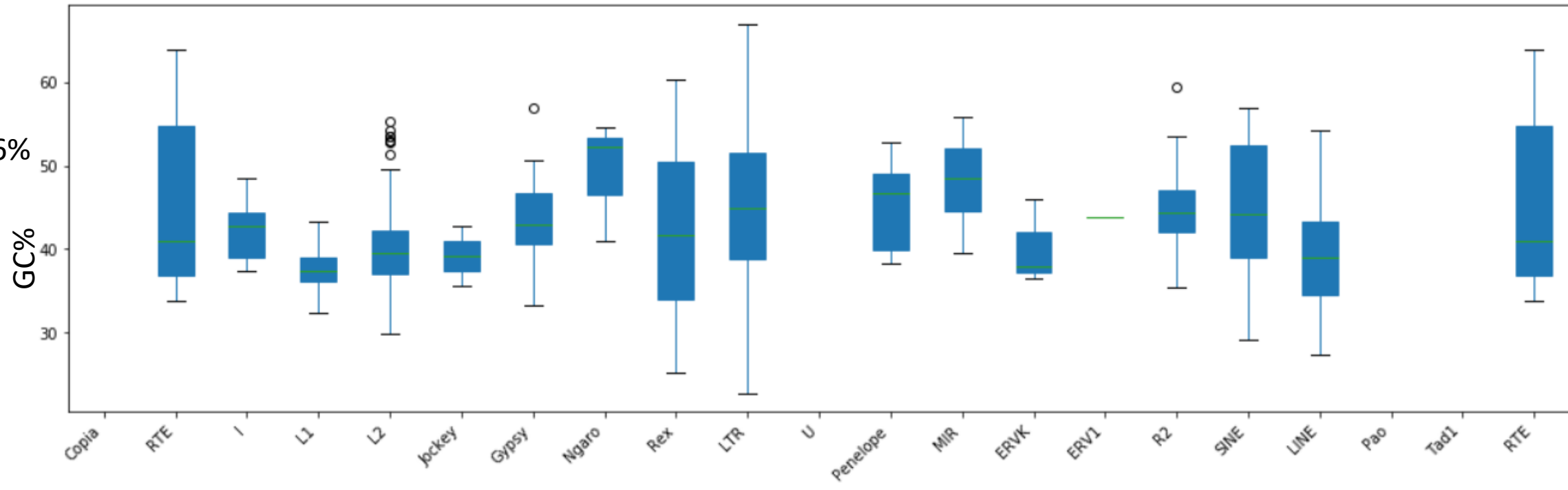
Class II



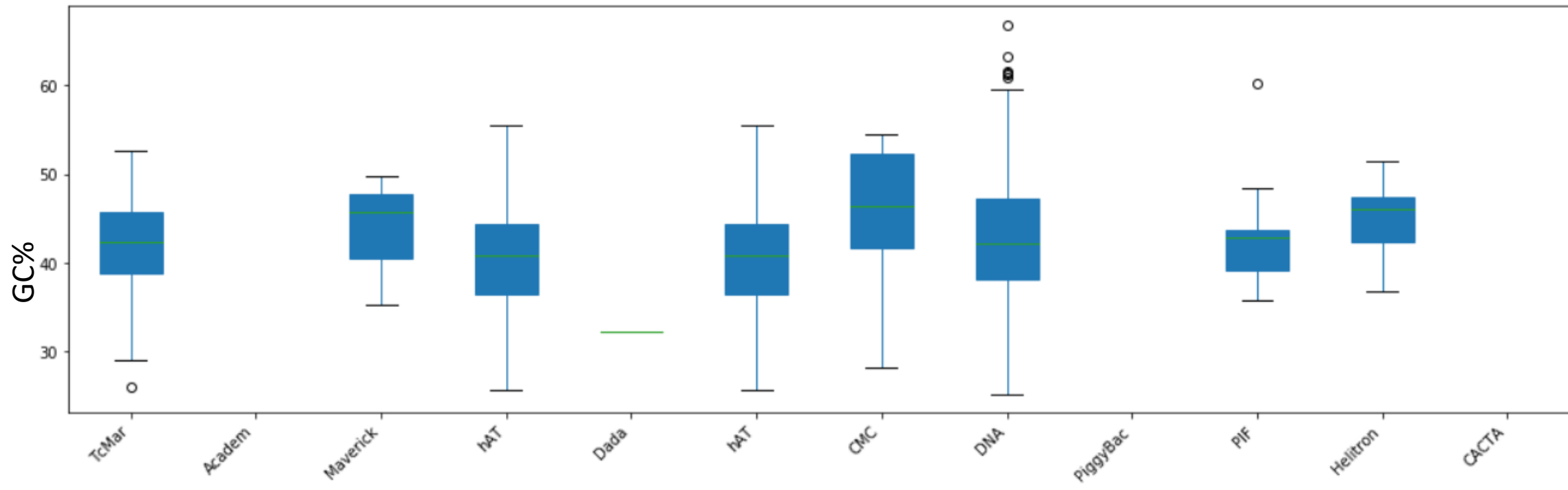
Thunnus orientalis

GC_G = 39,6%

Class I



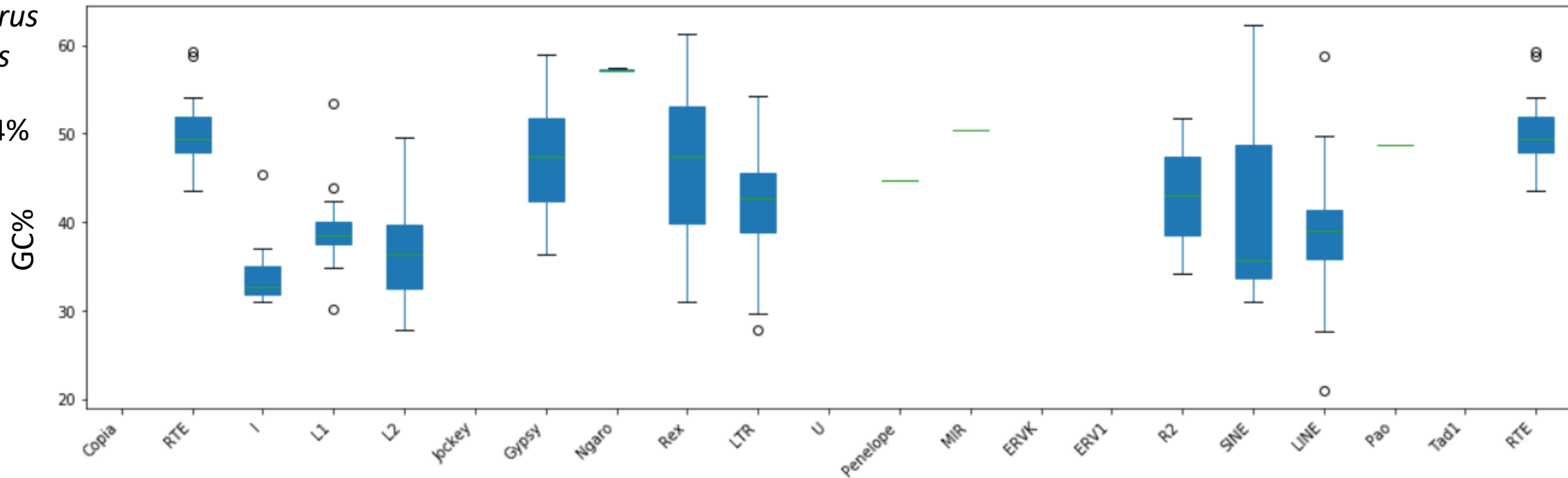
Class II



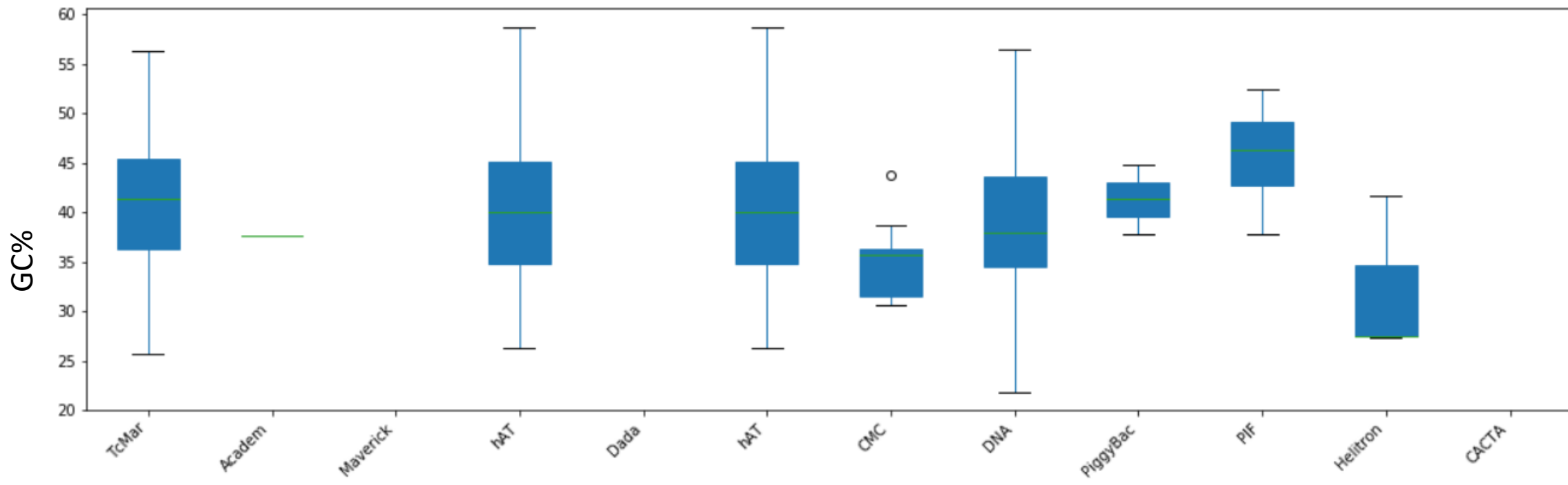
Xiphophorus maculatus

GC_G = 39,4%

Class I



Class II

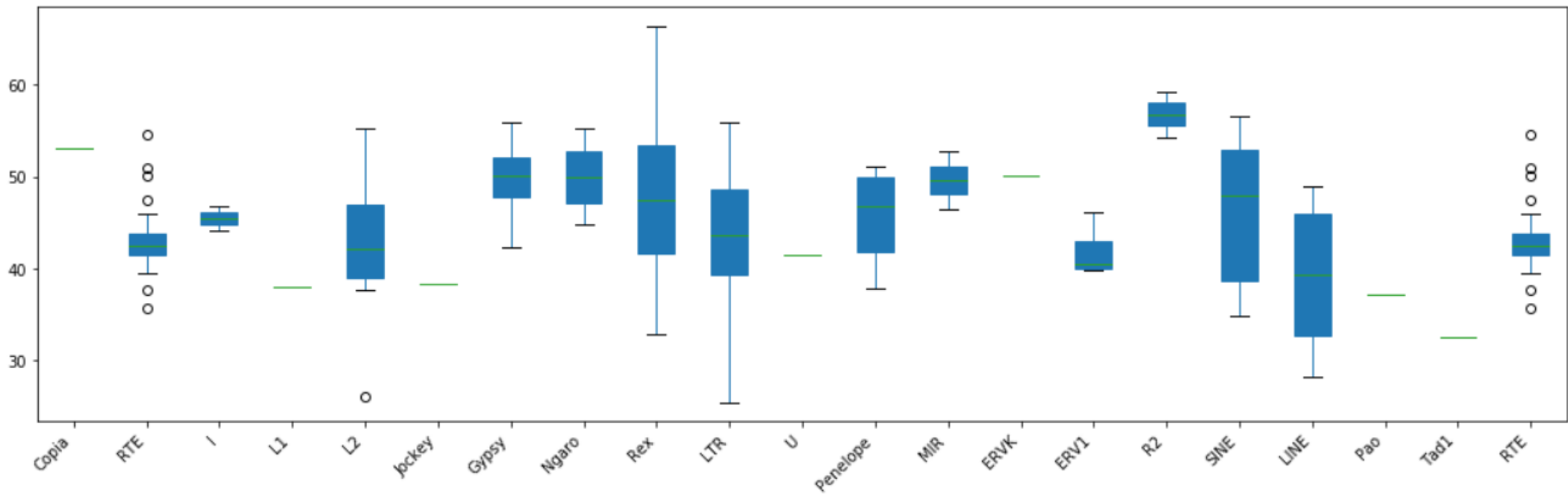


Cynoglossus semilaevis

GC_G = 41,3%

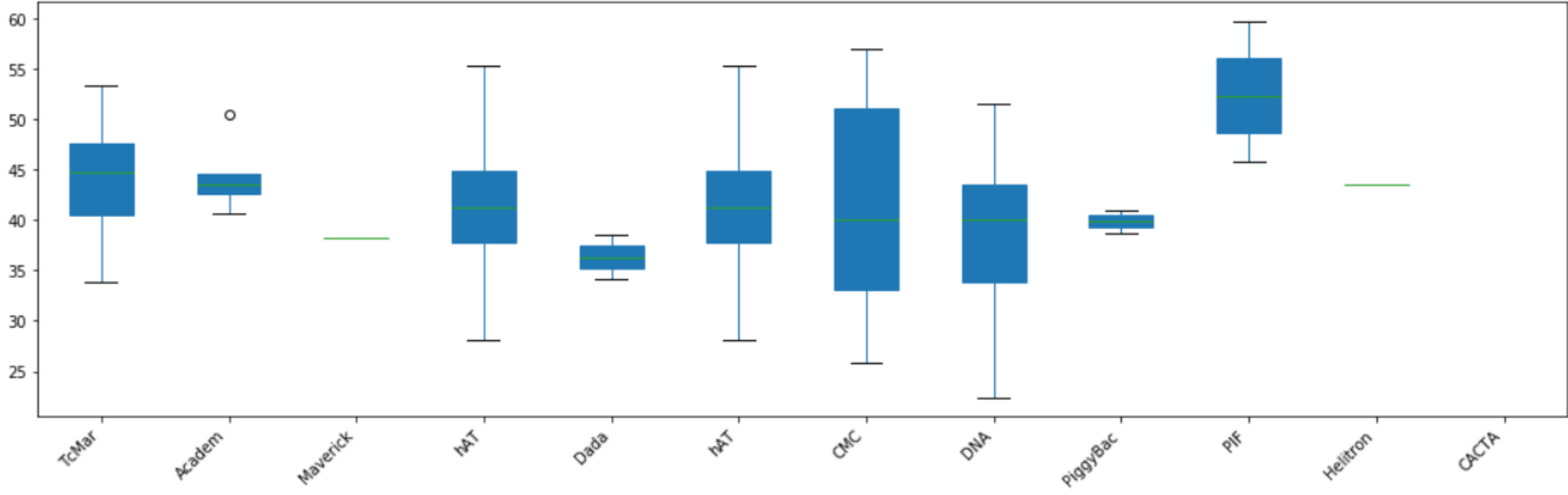
Class I

GC%



Class II

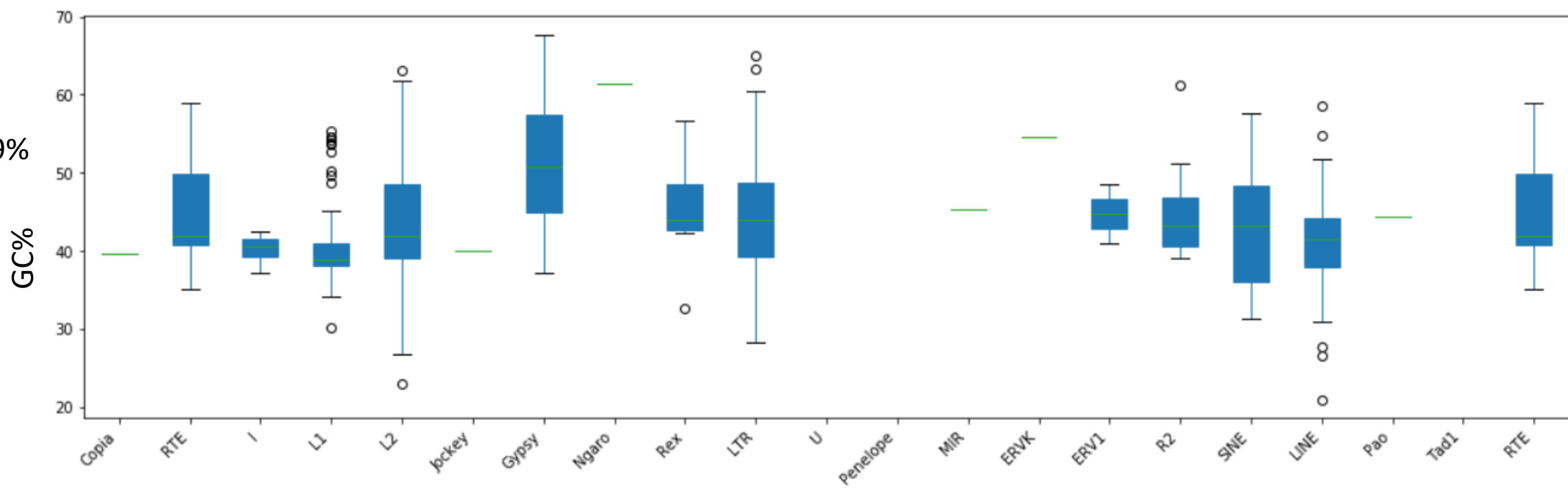
GC%



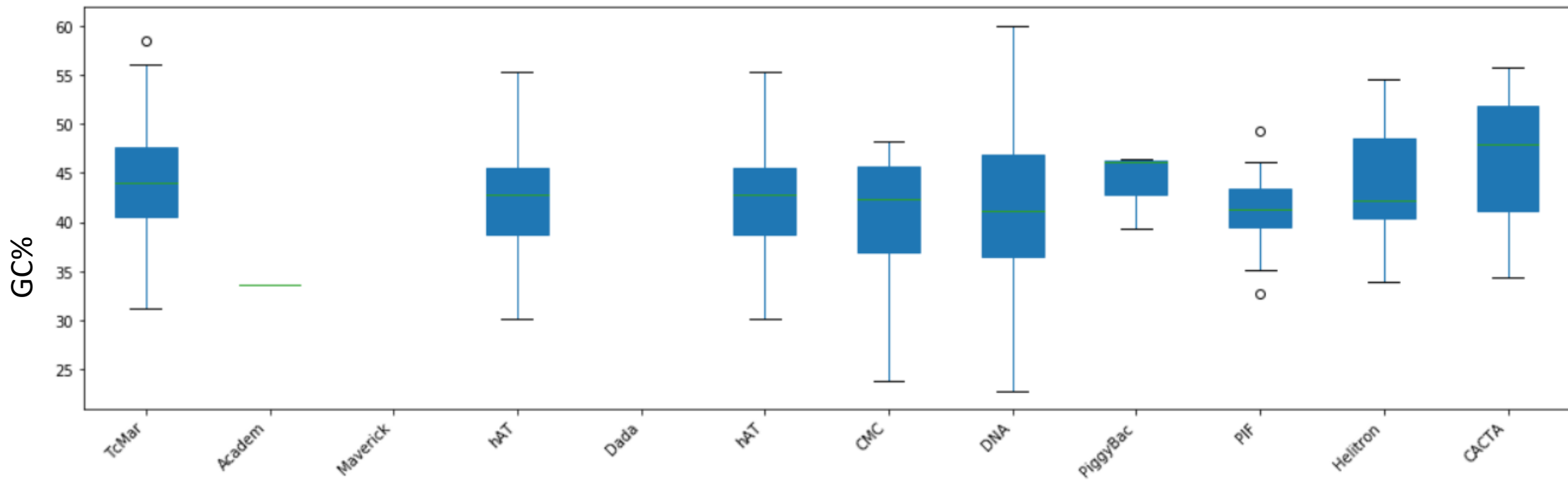
*Anguilla
anguilla*

GC_G = 42,9%

Class I



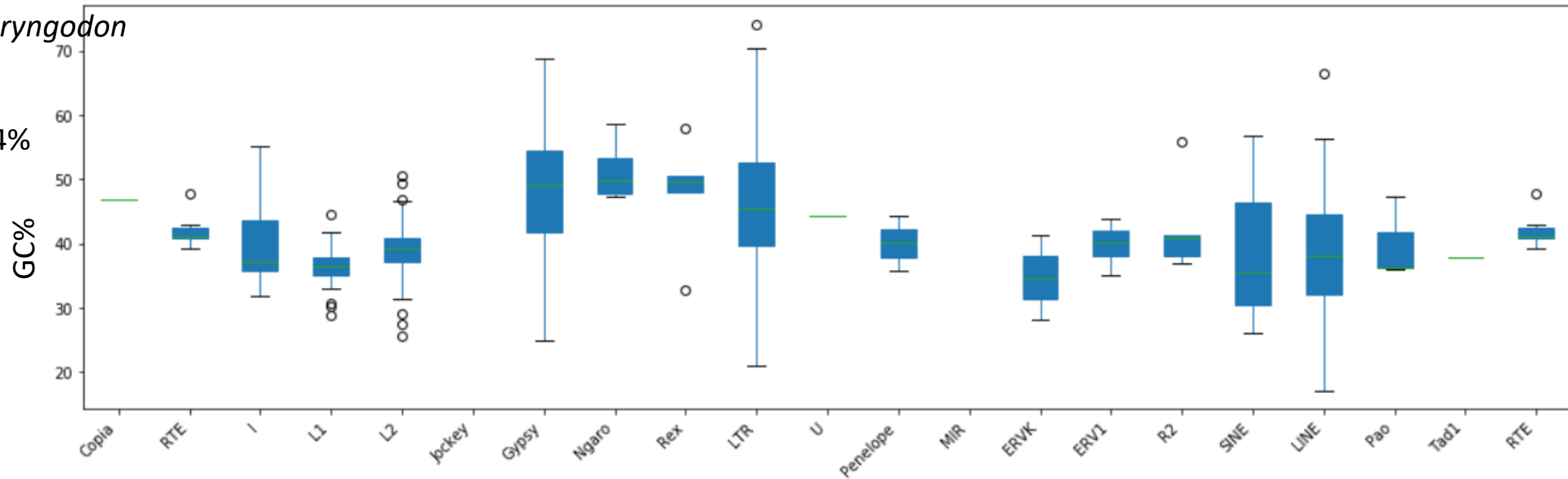
Class II



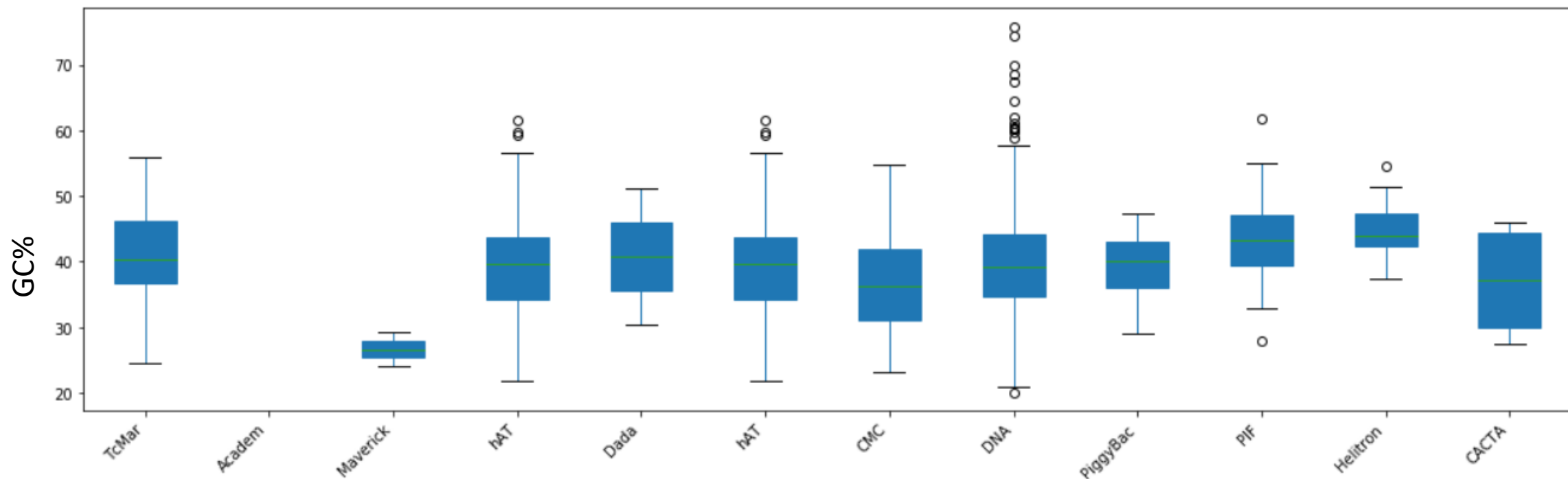
*Ctenopharyngodon
idellus*

GC_G = 37,4%

Class I



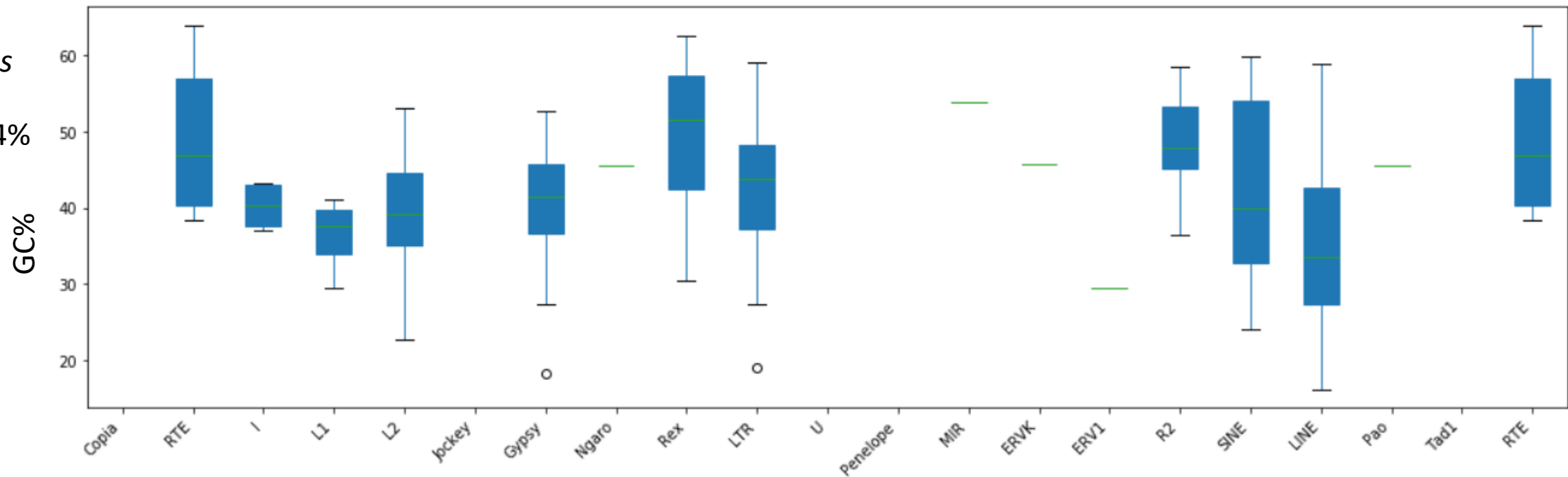
Class II



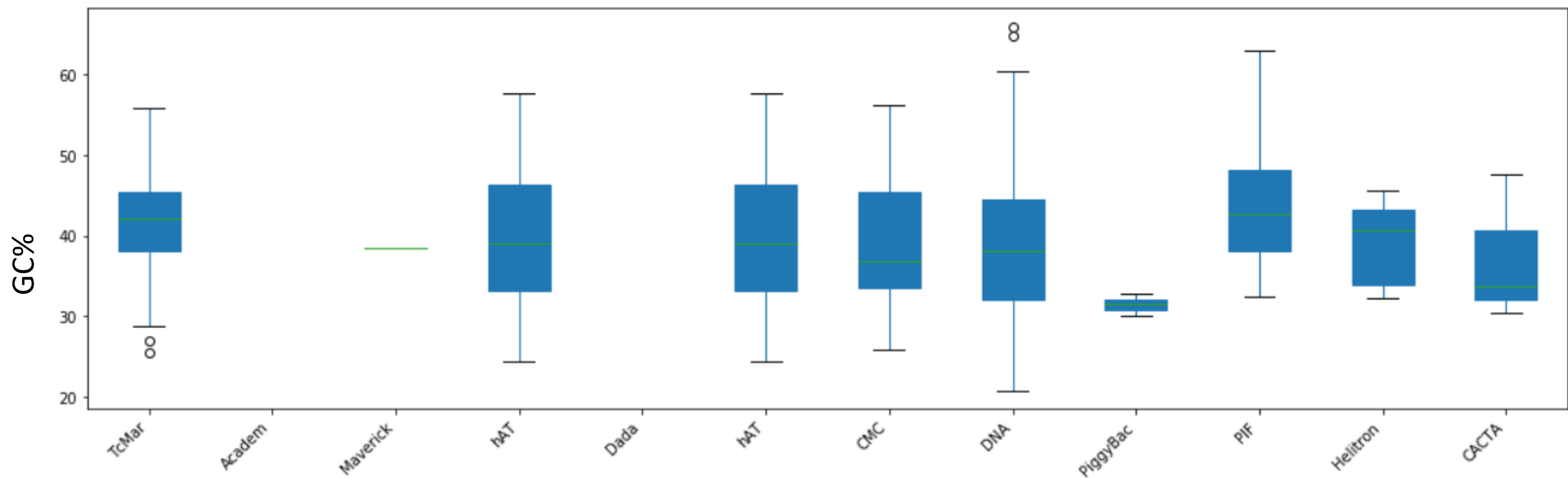
*Astyanax
mexicanus*

GC_G = 38,4%

Class I



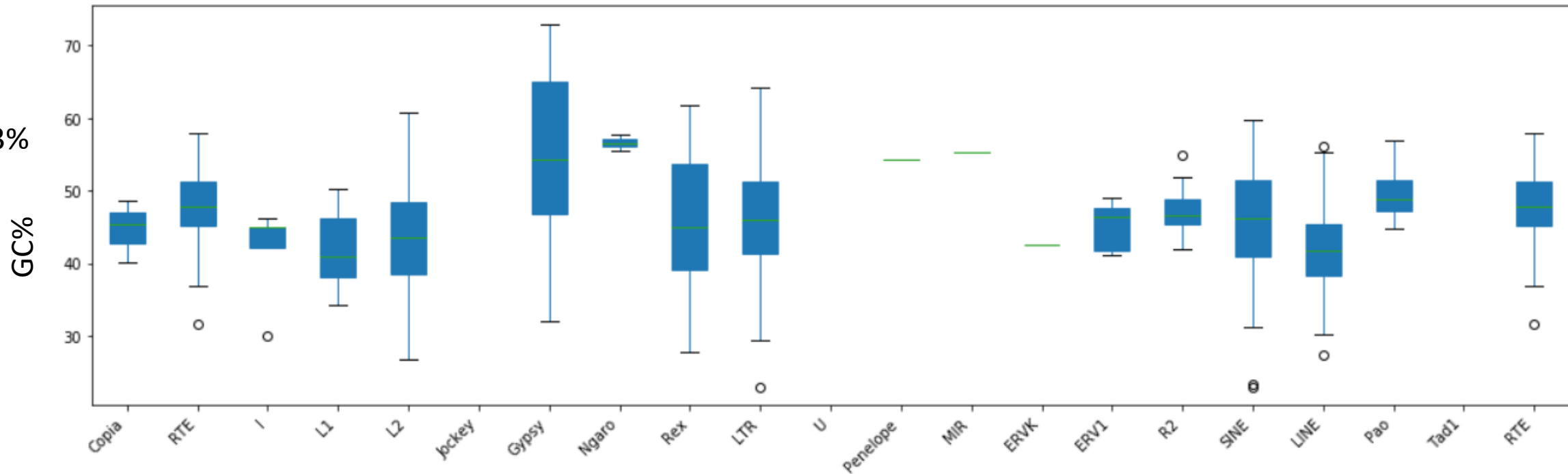
Class II



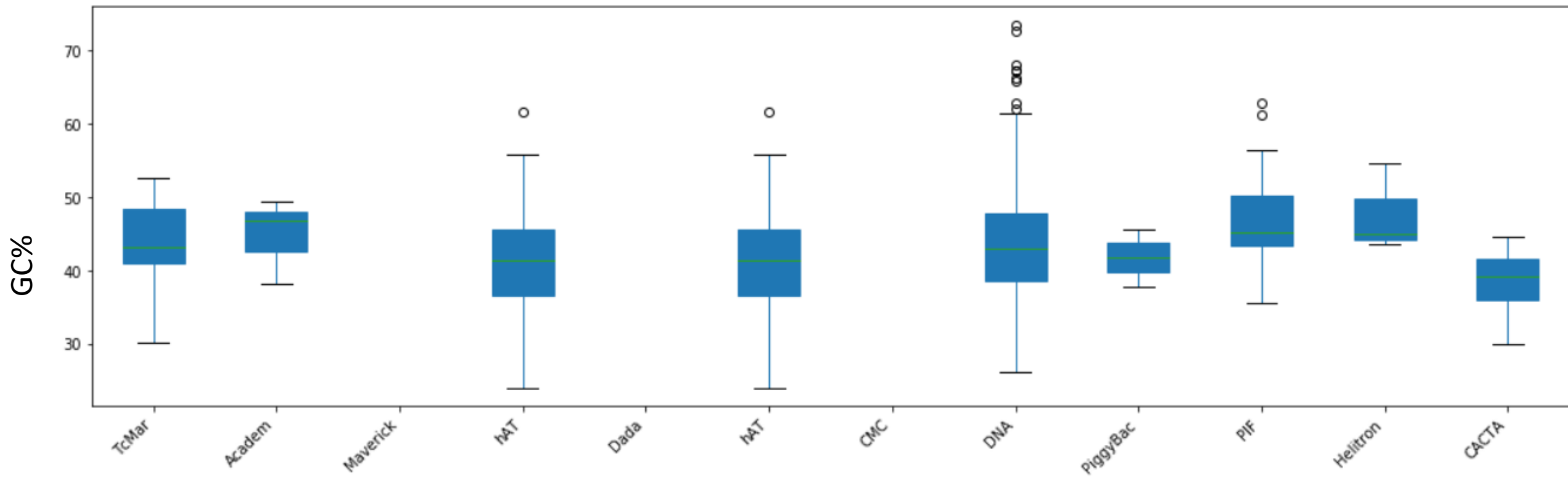
Gadus morhua

GC_G = 46,3%

Class I



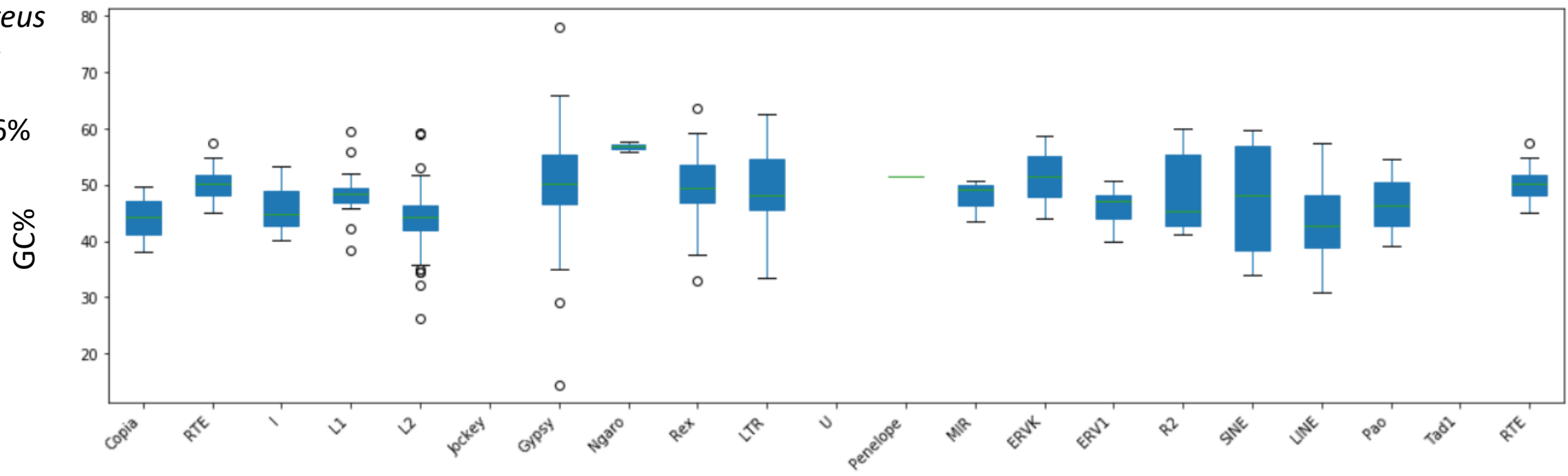
Class II



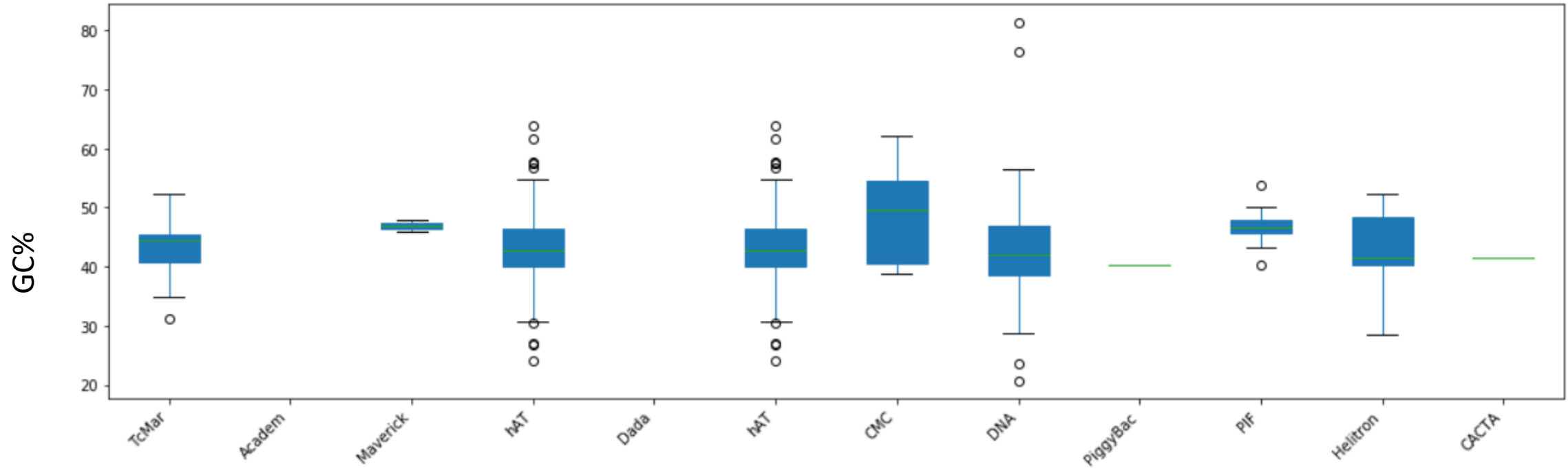
Gasterosteus aculeatus

GC_G = 44,6%

Class I



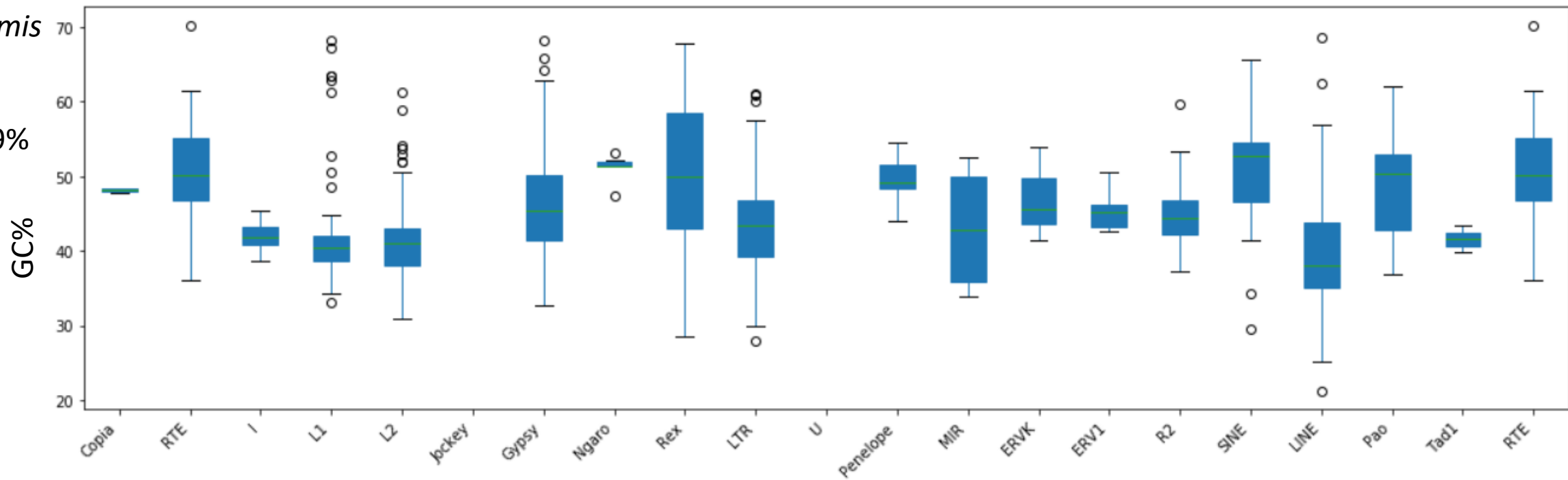
Class II



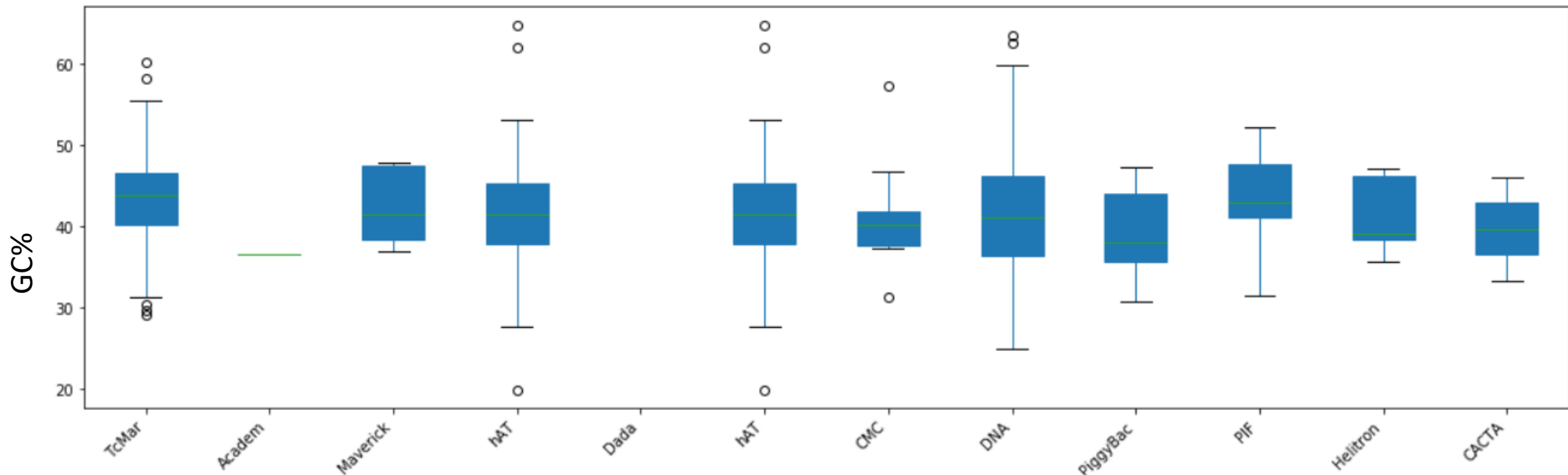
Oreochromis niloticus

GC_G = 39,9%

Class I



Class II

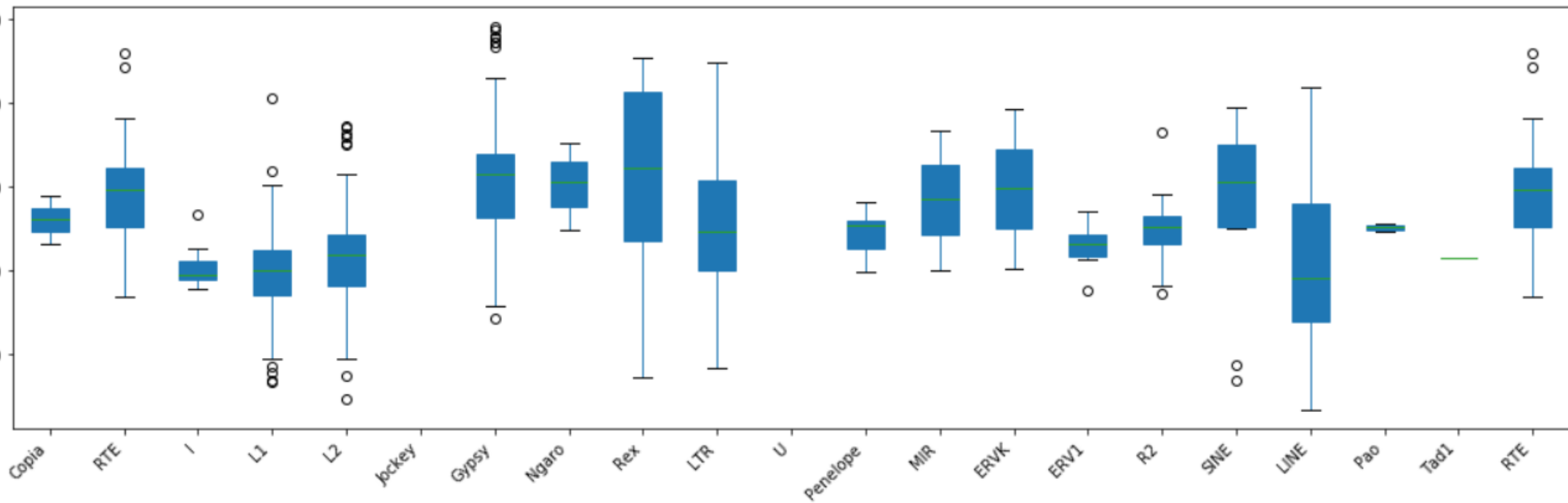


Oryzias latipes

GC_G = 41,5%

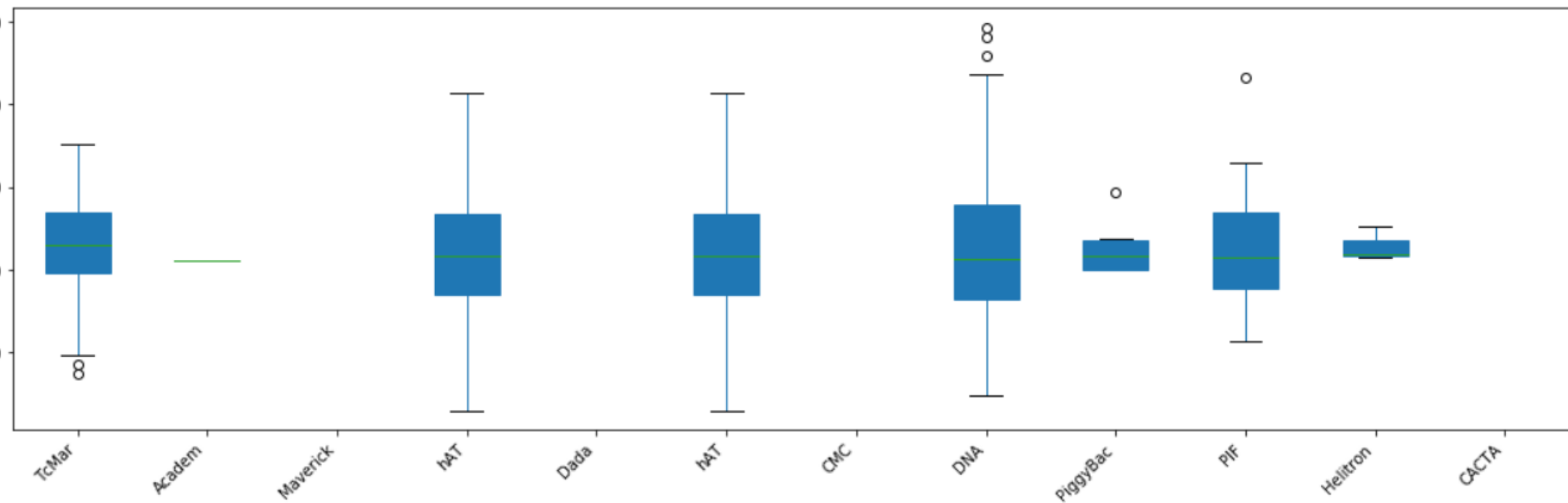
Class I

GC%



Class II

GC%

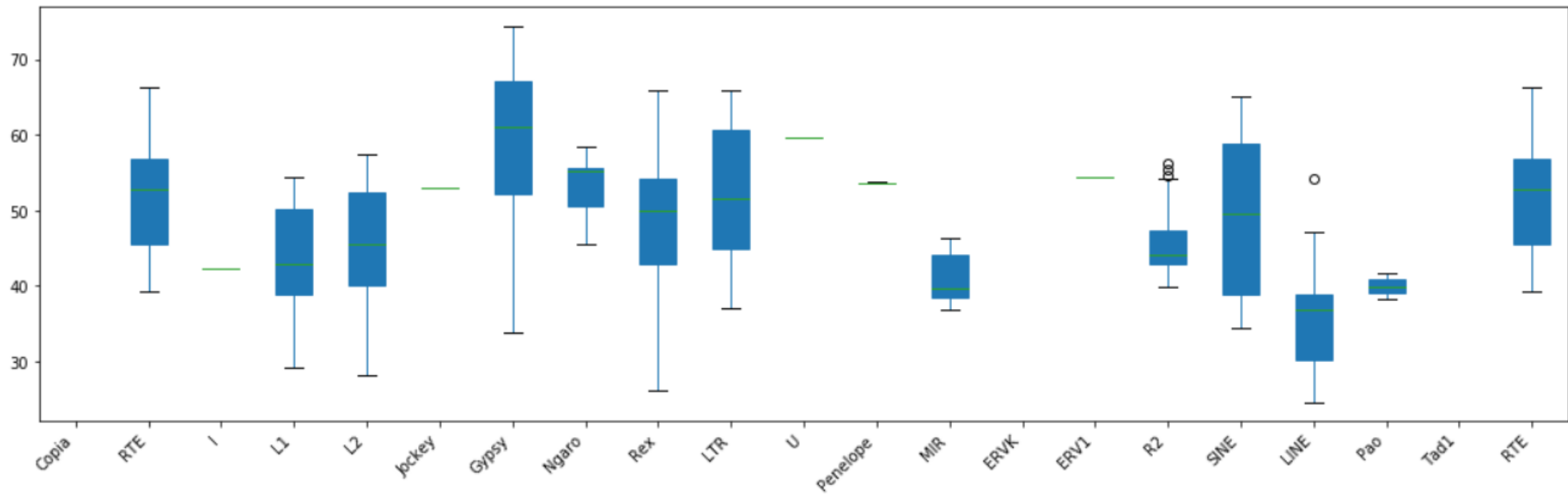


Scleropages formosus

GC_G = 43,9%

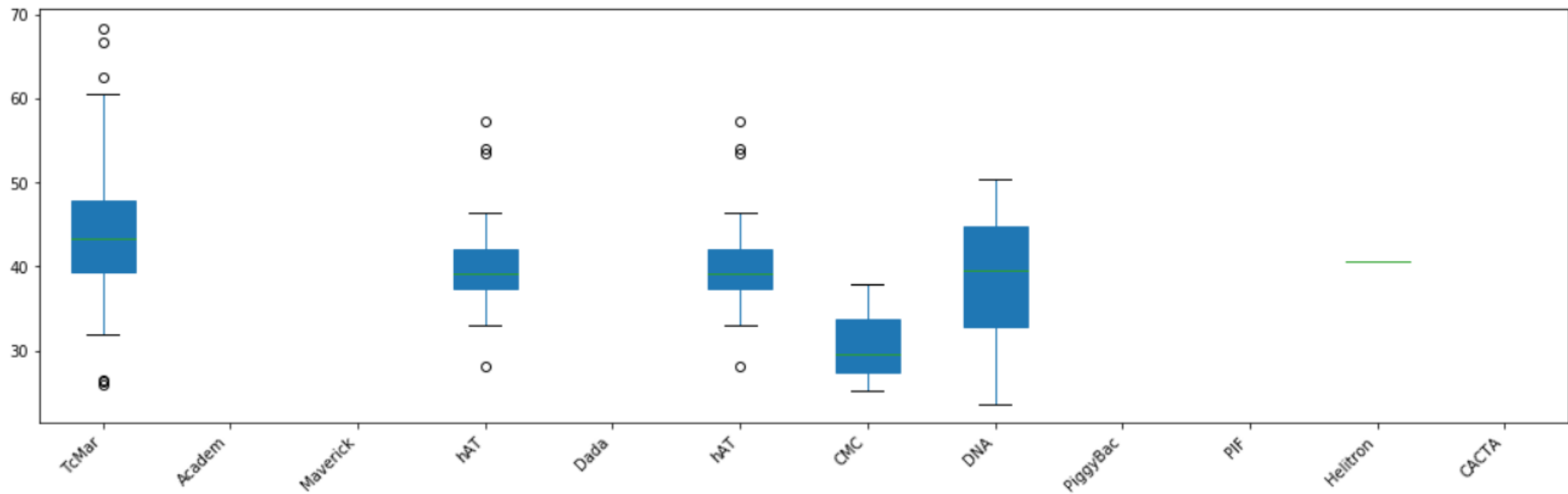
Class I

GC%



Class II

GC%

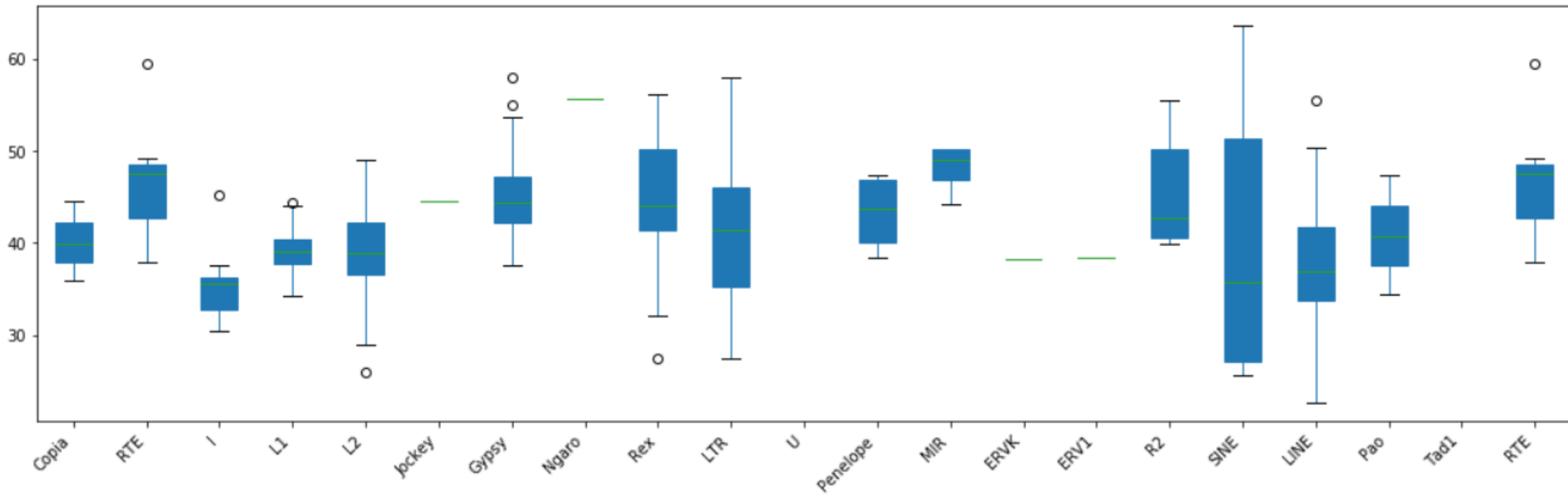


Poecilia formosa

GC_G = 39,6%

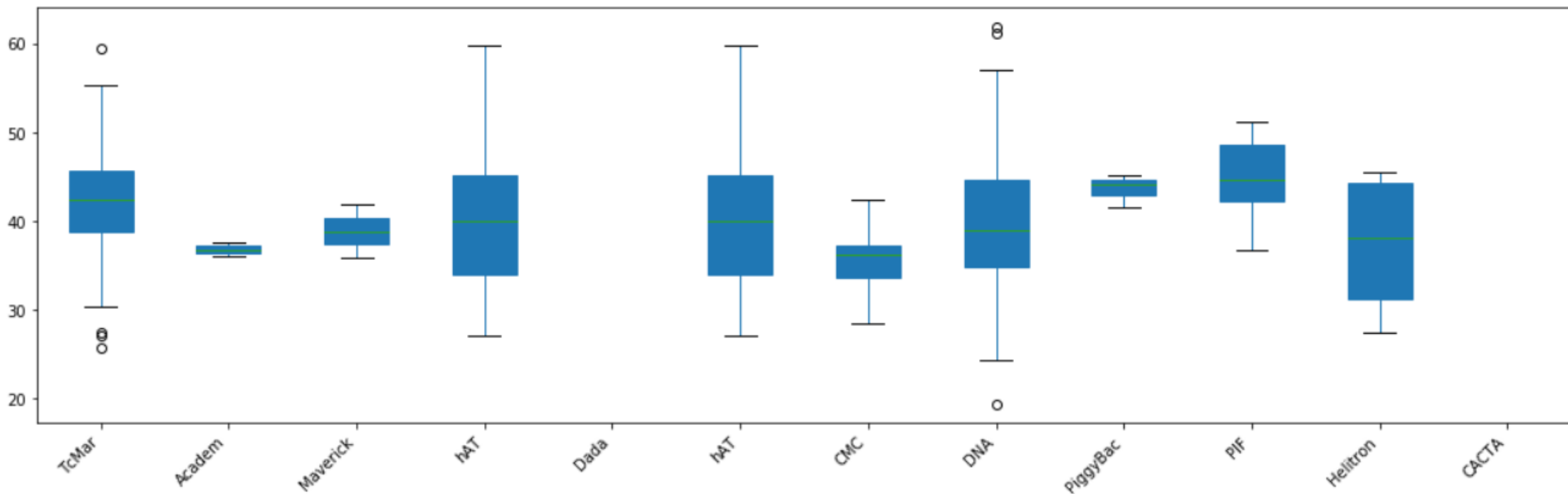
Class I

GC%



Class II

GC%

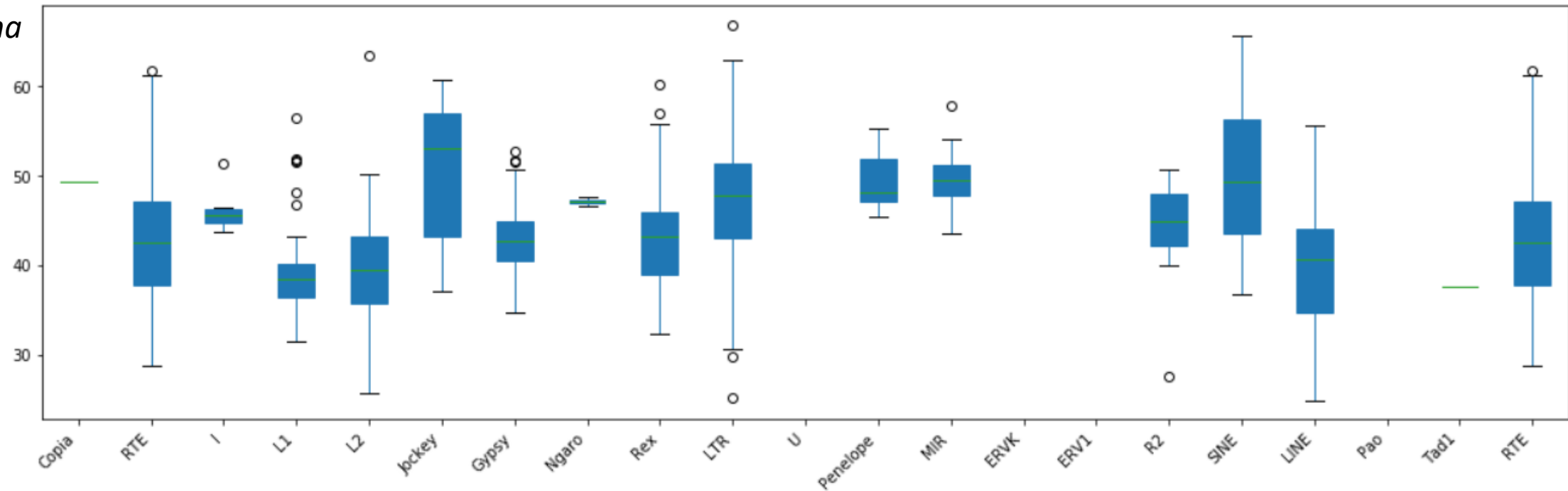


*Branchiostoma
belcheri*

GC_G = 40,6%

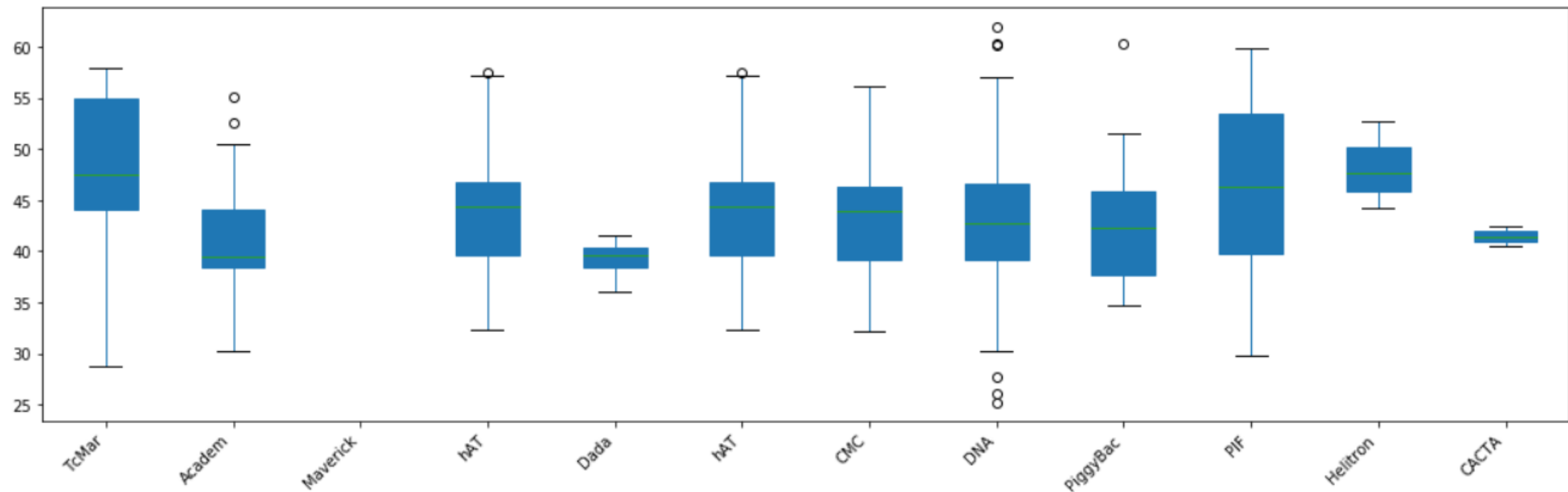
Class I

GC%



Class II

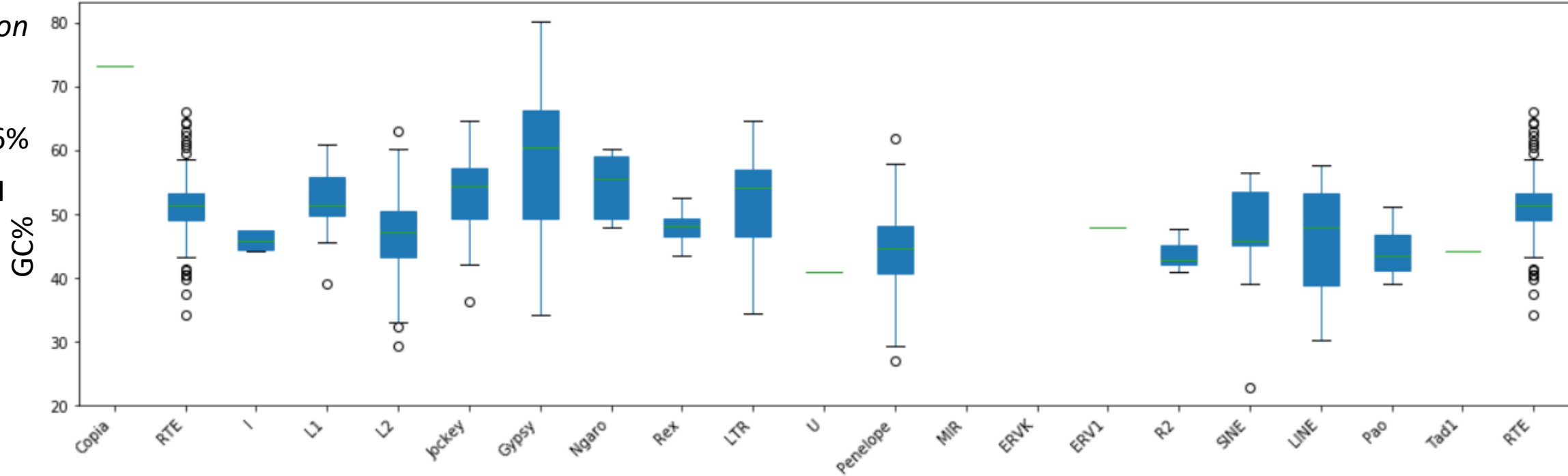
GC%



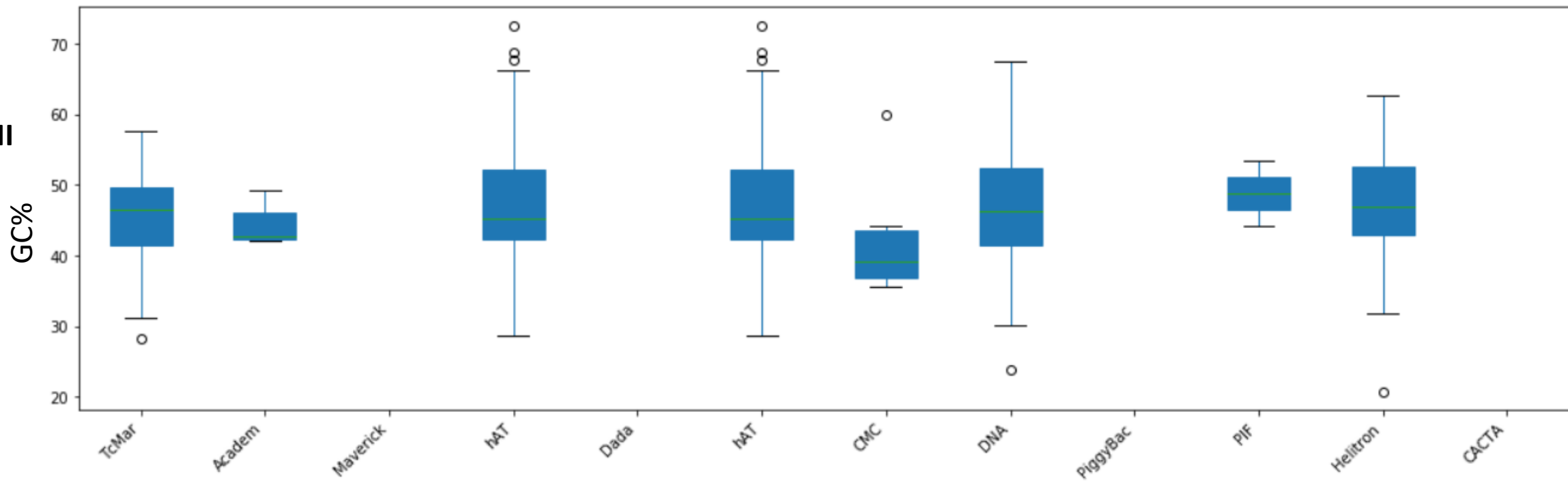
Petromyzon marinus

GC_G = 45,6%

Class I



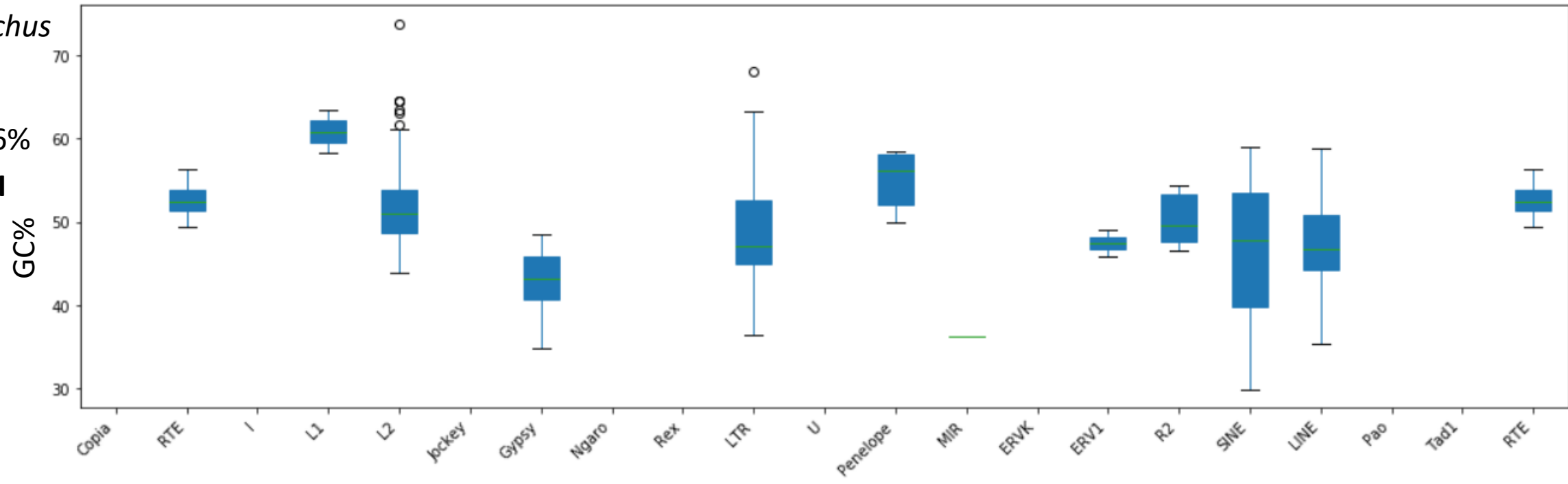
Class II



*Callorhinchus
mili*

$GC_G = 42,6\%$

Class I



Class II

